

USB Fieldbus Interface

- Extends FOUNDATION fieldbus connectivity to a PC/laptop
- Use in the field or on the bench
- Connects to AMS Suite for advanced predictive diagnostics
- Provides loop power
- Easy installation – drivers included
- Includes Communication DTM for use with FDT Frame Applications



Extend Connectivity to Your Fieldbus Network

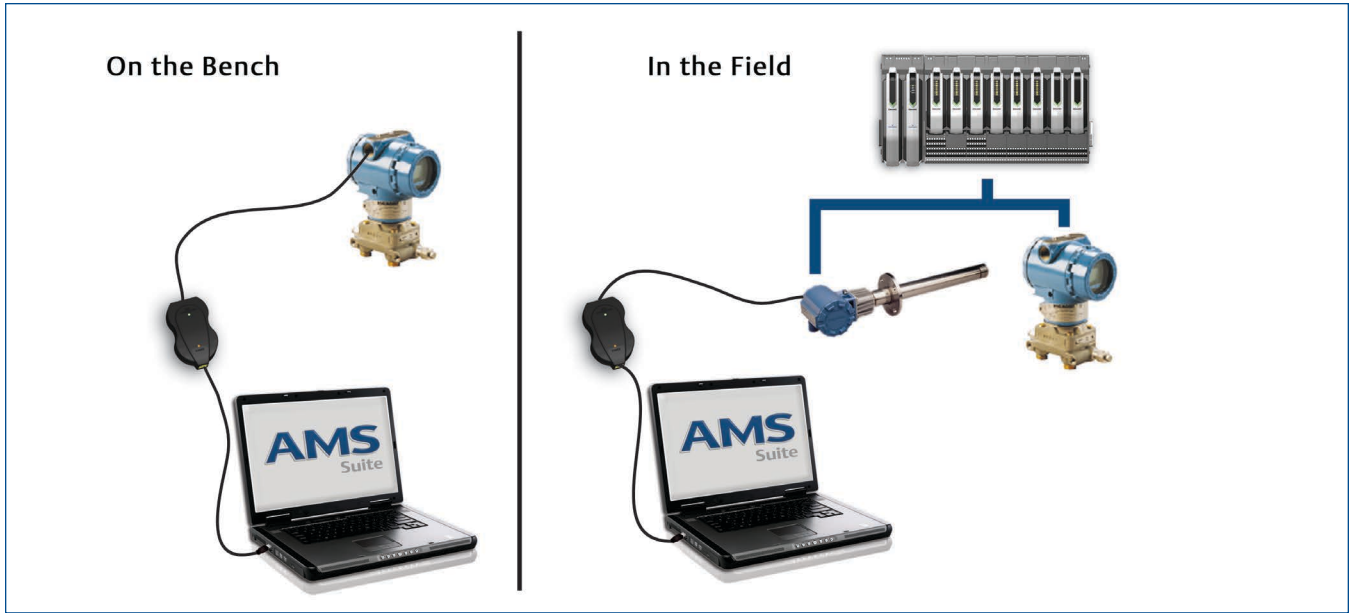
The USB Fieldbus Interface provides the communications link to your FOUNDATION fieldbus devices for commissioning, calibrating, and troubleshooting. When used with a laptop computer, the USB Fieldbus Interface can be taken to the field and used as a “visitor” on a live fieldbus segment without disrupting the proper operation of the segment.

When combined with AMS Device Manager, the USB Fieldbus Interface provides a powerful configuration and troubleshooting tool as well as documentation of work in the AMS Device Manager Audit Trail. The USB Fieldbus Interface gives you the flexibility and power to access important predictive diagnostics from your FOUNDATION fieldbus devices in the field or in the maintenance shop.

Flexible Power Capability

The USB Fieldbus Interface can be used on a powered segment or to power the segment. The utility software defaults to the NO POWER mode and asks you if power should be provided from the interface. This helps prevent you from accidentally applying power to a fieldbus network that is already powered.

When using in no power situations, such as on the bench, the USB Fieldbus Interface can provide up to 85ma of power to the fieldbus segment. You can connect the interface directly to the field device without worrying about power supplies, power conditioners, terminators, etc. An LED indicator indicates whether power is being provided externally or via the USB Fieldbus Interface.



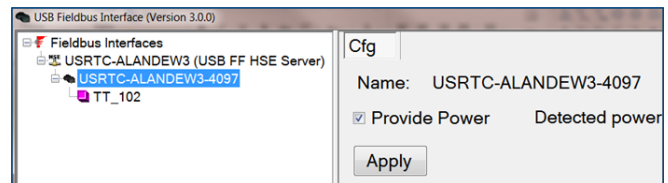
Software Support

A powerful driver/utility program is included with the USB Fieldbus Interface. This easy-to-install software allows you to set the power mode and commission devices. The program provides extra checks to ensure that power is not applied to a powered segment and that a device address/tag is not changed on a live segment.

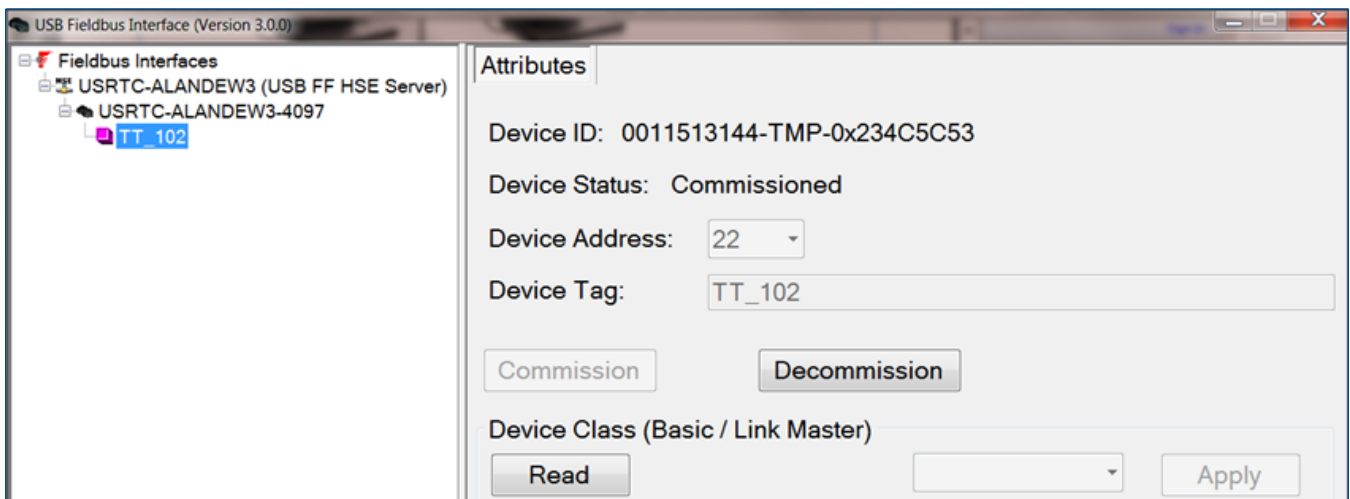
The USB Fieldbus Interface software can be used to commission FOUNDATION fieldbus devices, including assignment of device tags. You can also change a device class from Basic to Link Master.

FDT Application Support

The Communicator DTM enables the USB Fieldbus Interface to be used with FDT Frame Applications, including PACTware. When used with device DTMs, the USB Fieldbus Interface/ PACTware combination provides a powerful and economical tool for FOUNDATION fieldbus devices.



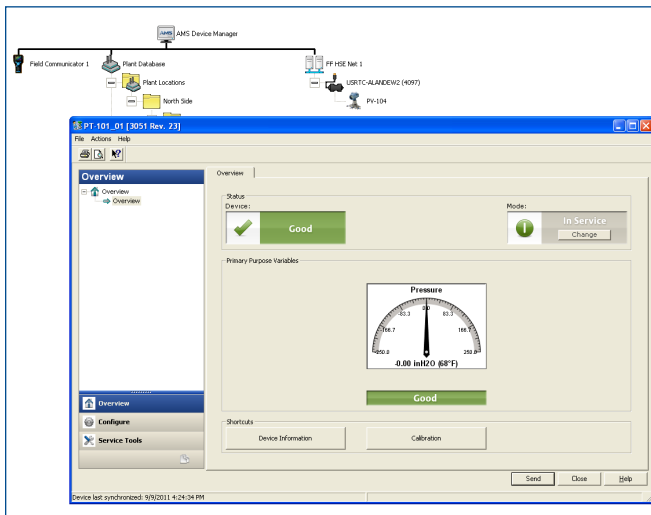
USB Fieldbus Interface can be used to power the fieldbus segment.



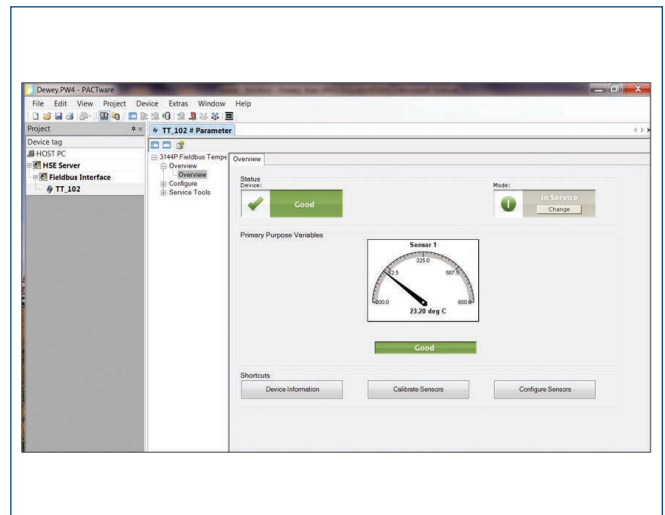
Commissioning and tagging a FOUNDATION fieldbus device is easy.

Technical Specifications

Software	
Operating System	Windows XP, Windows 7 (32 and 64 Bit), Windows 8.0 and 8.1
USB 2.0 Interface	Configurator Utility and Communicator DTM
Application Software Supported (not included – must be purchased separately)	
AMS Device Manager	Version 11.5 or higher
PACTware	Version 4.1 or higher
Electrical	
Current provided to fieldbus segment	85 ma
Current draw from powered segment	12 ma
Terminators (for USB powered segments)	2
IEC 61626-1 Emissions and Immunity	
IEC /UL/CSA 60950 -1 Safety	
IEC 61158-2 FOUNDATION fieldbus Physical Layer	
FCC 47 CFR, Part 15: 2009, §15.107, §15.109, Class B	
Environmental	
Operating Temperature	-20°C to 60°C (-4°F to 140°F)
Storage Temperature	-40 to 85°C (-40 to 185°F)
Storage Humidity	0 to 95% relative humidity



When used with AMS Device Manager, the USB Fieldbus Interface provides a powerful configuration and diagnostic tool.



The USB Fieldbus Interface and PACTware enable use with device DTMs.

Ordering Information

Part Number	Description	Notes
AW7060FFUSB	USB Fieldbus Interface	Includes USB Interface, USB Cable, Device Lead Set, User Manual, and Installation CD (with Communication DTM)
AW7060USBCBL	USB Cable	
AW7060MNL	User Manual	
AW7060CD	Installation CD	Includes Utility Program
DTM7060CD	Installation CD (including Communication DTM)	Includes Utility Program and Communication DTM
00375-0004-0001	Lead Set with Connectors	
AW7060HSE	FOUNDATION fieldbus HSE Interface	
AW7060HSEFFUSB	USB Fieldbus Interface with FOUNDATION fieldbus HSE Interface	Includes USB Interface, USB Cable, Device Lead Set, User Manual, Installation CD (with Communication DTM), and HSE Interface license.

©2014, Emerson Process Management.

The contents of this publication are presented for informational purposes only, and while every effort has been made to ensure their accuracy, they are not to be construed as warranties or guarantees, express or implied, regarding the products or services described herein or their use or applicability. All sales are governed by our terms and conditions, which are available on request. We reserve the right to modify or improve the designs or specifications of our products at any time without notice.

All rights reserved. AMS is a mark of one of the Emerson Process Management group of companies. The Emerson logo is a trademark and service mark of Emerson Electric Co. All other marks are the property of their respective owners.

Emerson Process Management
 12001 Technology Drive
 Eden Prairie, MN 55344 USA
 T 1(952) 828-3633
 F 1(952) 828-3006
www.assetweb.com

