

Fisher™ FIELDVUE™ DVC6200p DTM with PACTware 4.1

This document takes you through establishing a connection to PROFIBUS PA device DVC6200p in PACTware 4.1 through PROFlusb USB and the installation of the supported DTM.

Notes

The information found in this document can also be used to establish connections to FieldCare™ and FieldMate configuration tools.

Refer to the [DVC6200 Series Quick Start Guide, D103556X012](#) for DVC6200p installation, connection, and initial configuration information and the [DVC6200p Instruction Manual, D103563X012](#) for all other information pertaining to the DVC6200p digital valve controller, including product specifications, reference materials, custom setup information, maintenance procedures, and replacement part details.

DTM Supported:

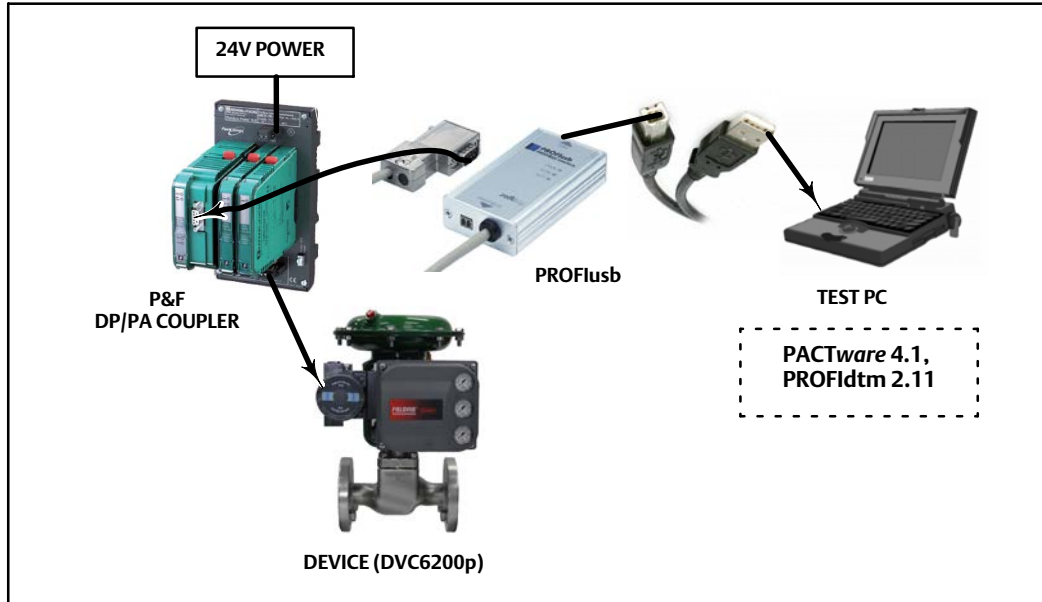
DVC6200p_Profibus_DTM

Assumptions and Supported Environment:

The following software and hardware should be installed prior to launching the DVC6200p DTM in PACTware 4.1.

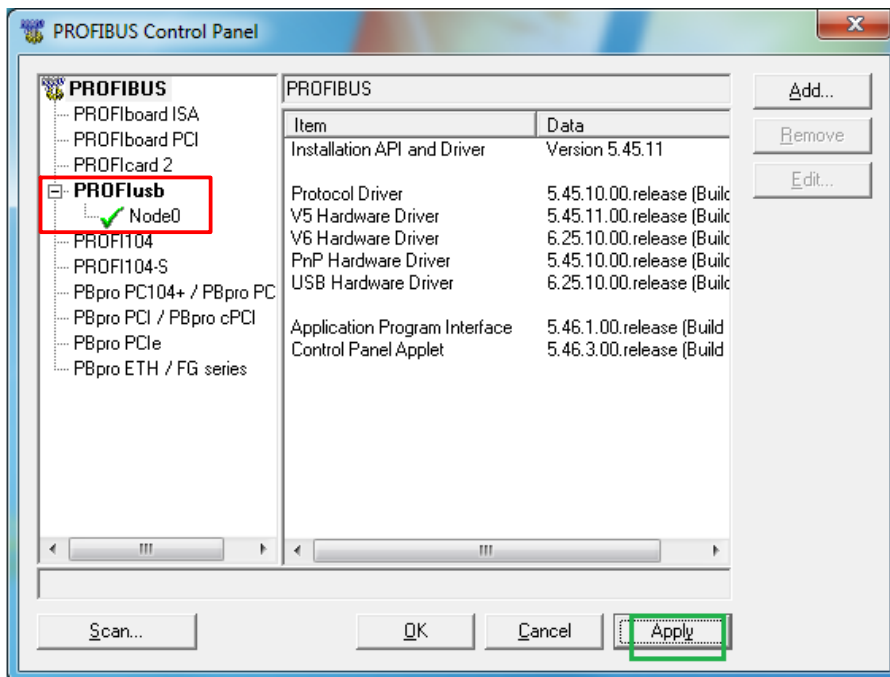
S. No	System	Version	Reference Link
1	PD to PA Coupler (Pepperl and Fuchs)	Compact PROFIBUS Power Hub and Segment Coupler KT-MB-GTB-2PS	http://www.pepperl-fuchs.us/usa/en/classid_1482.htm?view=productdetails&prodid=36114
2.	PROFlusb USB	H/W V1.03 Driver Ver. 5.45.11	Drivers included with CD/DVD when purchased
3.	PROFIBUS CommDTM	FROFIdtm	PROFibus DTM
4.	Pactware 4.1	Ver 4.1	PACTware 4.1 from pepperl-fuchs

Profibus PA Device + DP/PA Coupler + PROFlusb USB + Pactware 4.1 +PROFIdtm



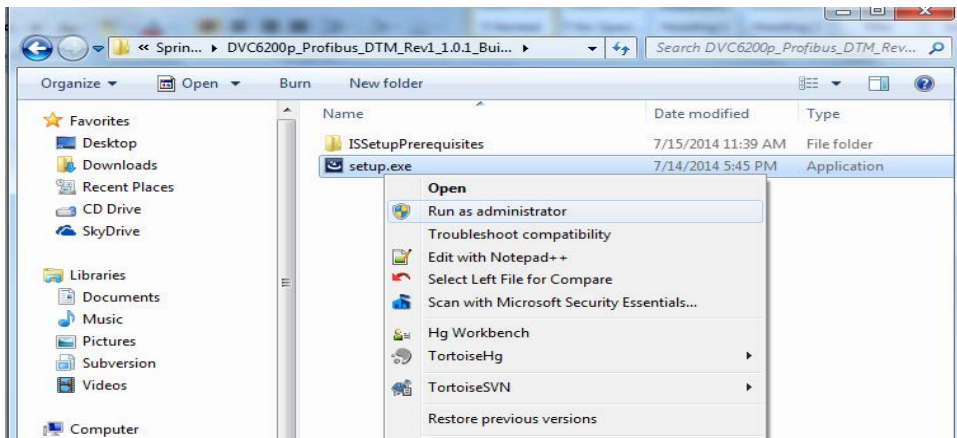
Note

Driver for PROFlusb should be installed and configured as shown in the figure below before launching the DTM.

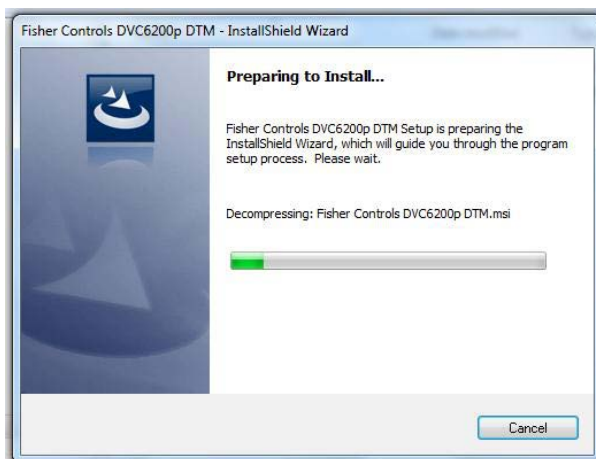


Installing the DTM

1. Download the DVC6200p_Profibus_DTM and extract the folder. Navigate to setup.exe in the extracted folder.
2. Right click on setup.exe and click Run as administrator from the context menu.



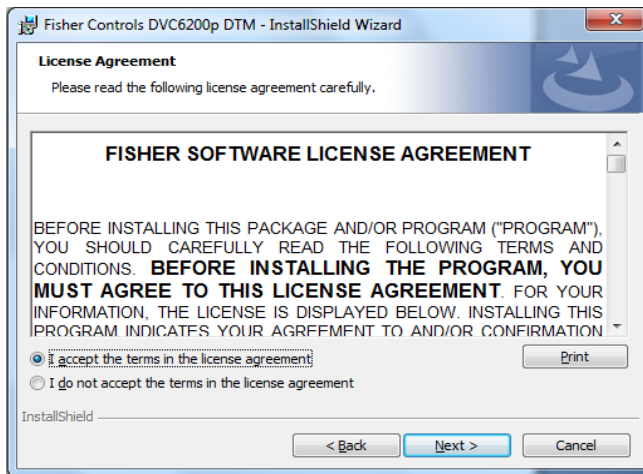
3. DVC6200p device DTM installation will start as shown in the figure below.



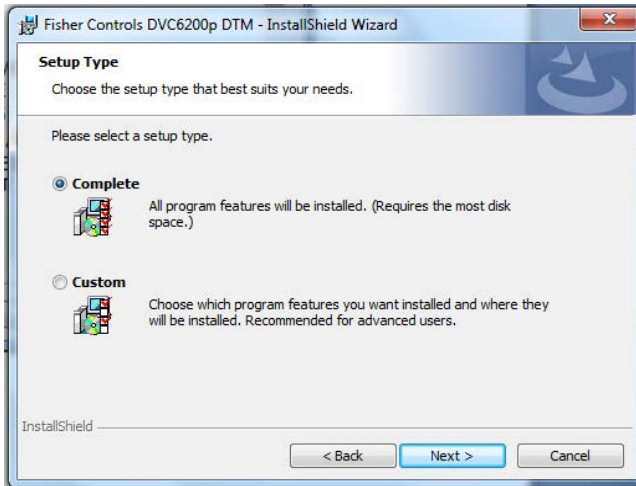
4. Click Next as indicated below.



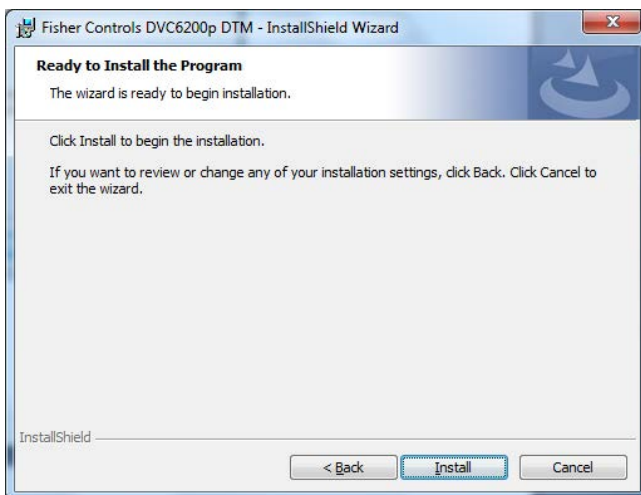
5. Accept the terms in the license agreement and click Next.



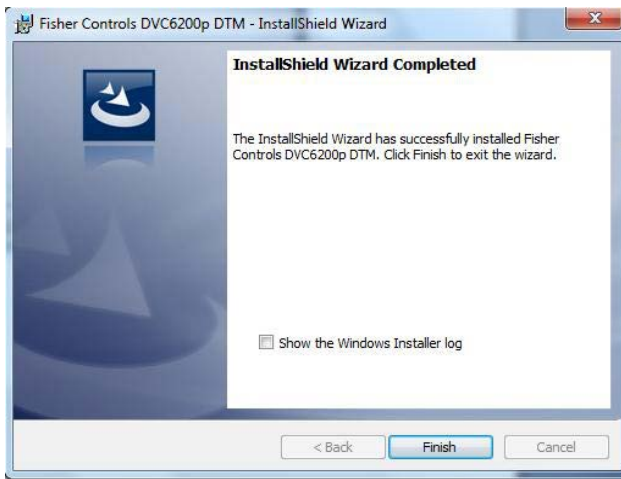
6. Select **Complete** and click **Next** to continue with the installation.



7. Click **Install** to begin installation of the DVC6200p Device DTM.



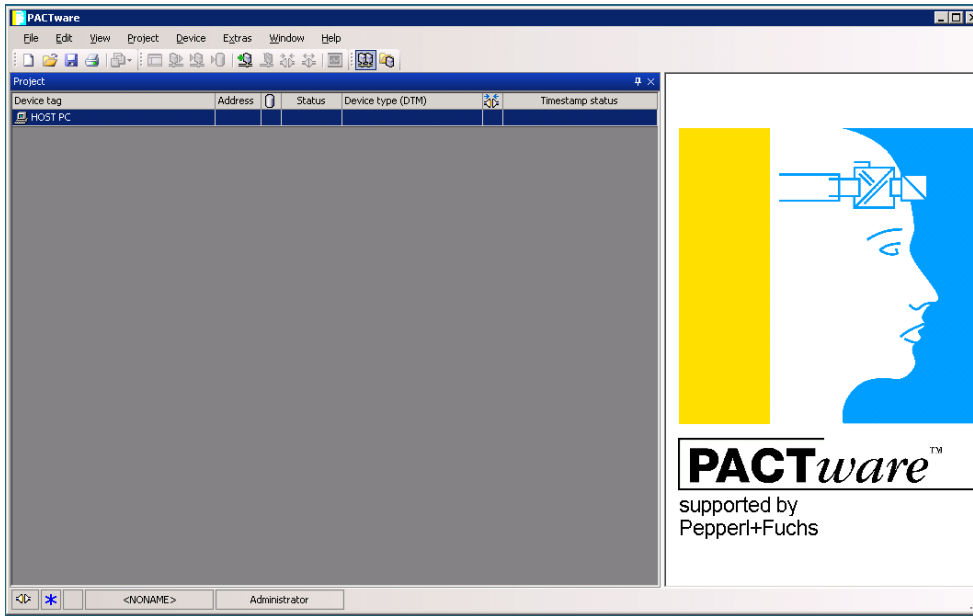
8. Click Finish to complete the installation.



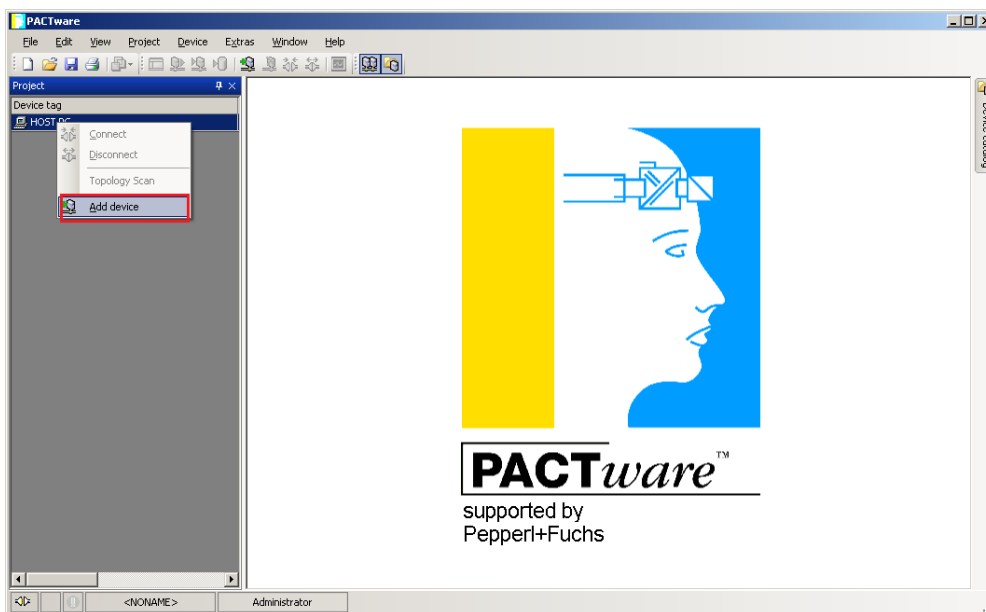
9. The DVC6200p Device DTM is now installed on your machine.

Launching the DVC6200p DTM in PACTware 4.1

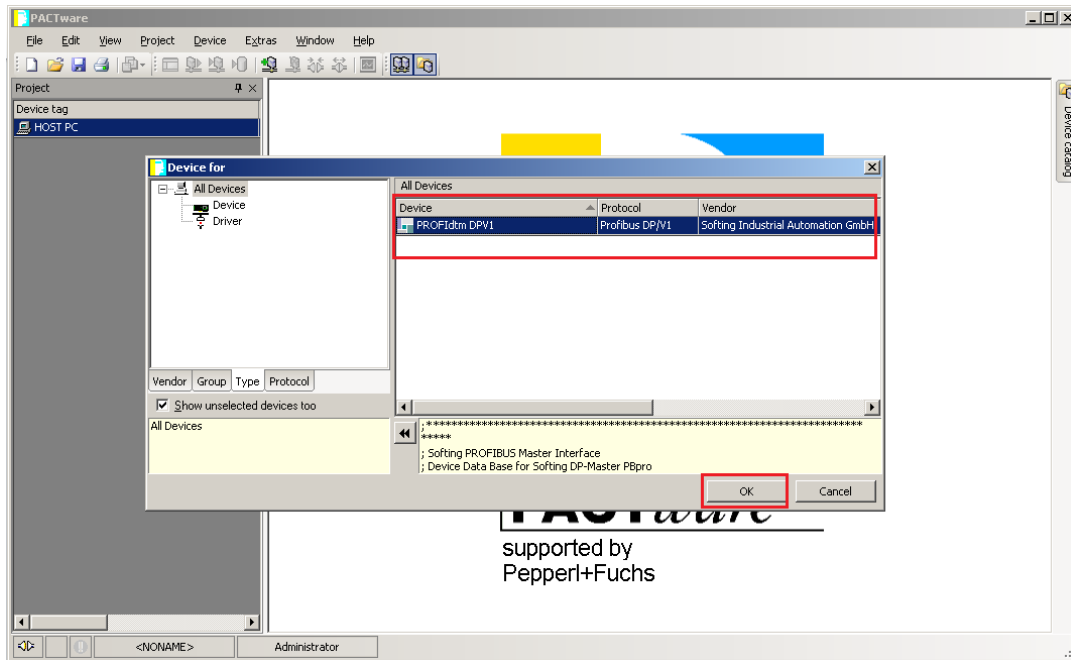
1. Go to All Programs and select PACTware 4.1.



2. Right click on HOST PC and select Add device, as shown in the following figure.

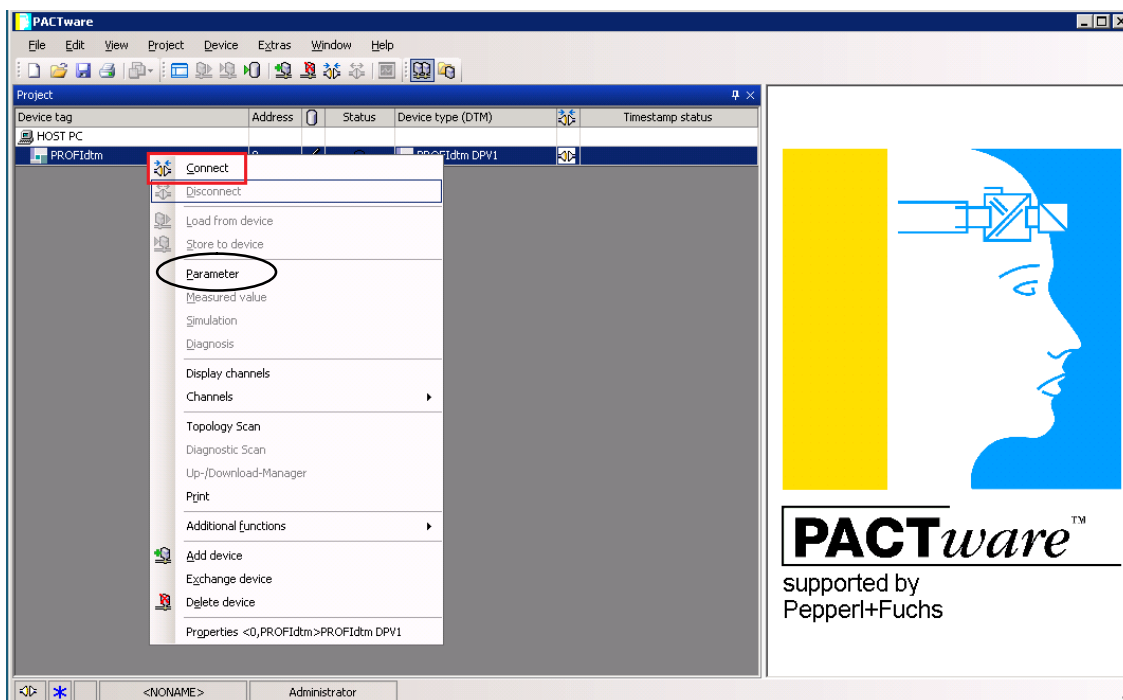


3. Select PROFIdtm DPV1 and click OK as shown below.

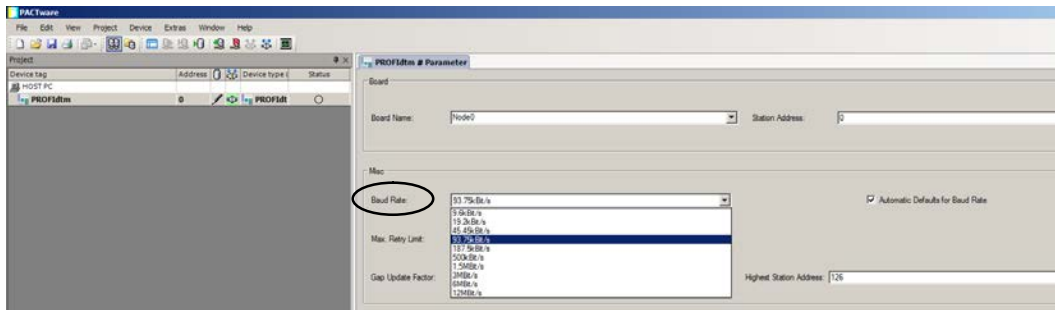


4. PROFIdtm is added as a project.

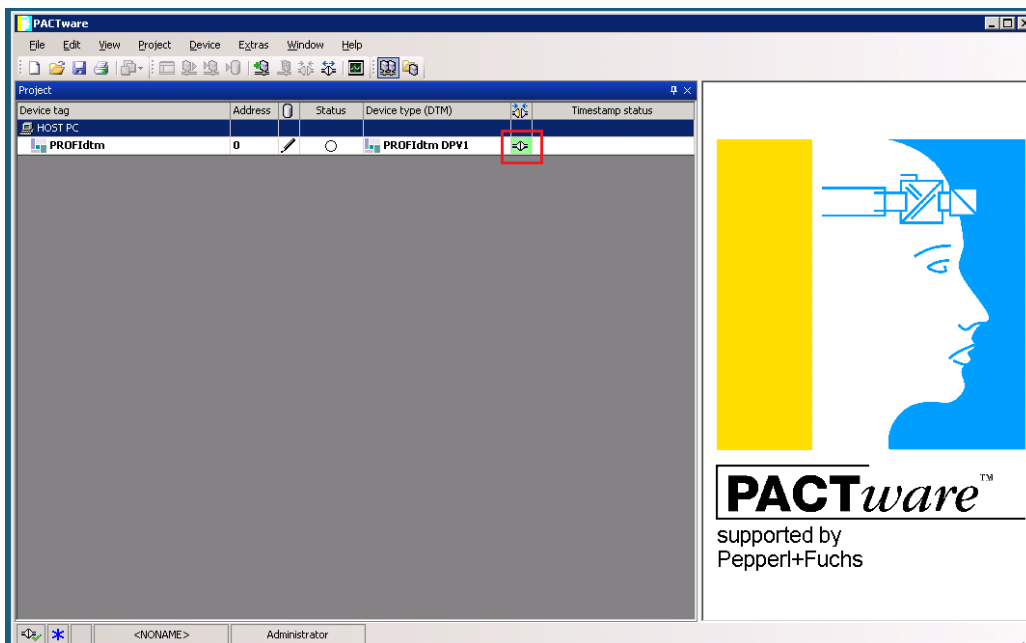
5. Right-click on PROFIdtm and select Connect, as shown below.



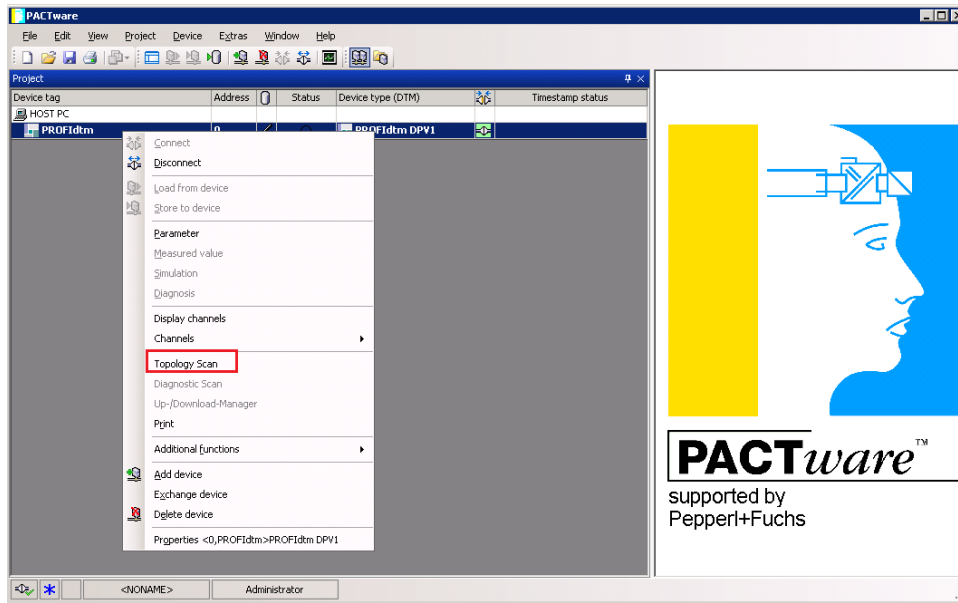
6. Select Parameter from the drop down menu (see previous page) and enter the Baud Rate. Enter 93.75 k Bit/s for the P&F Coupler and 45.45 k Bit/s for the Siemens Coupler.



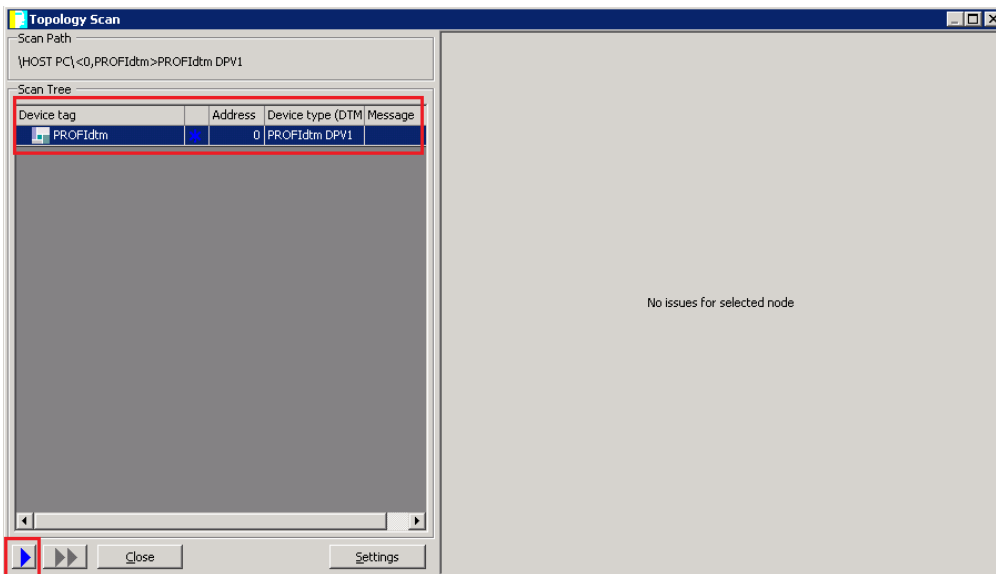
7. The PROFIBUS communication DTM is now connected, as confirmed by the green connection status icon (shown in the figure below).



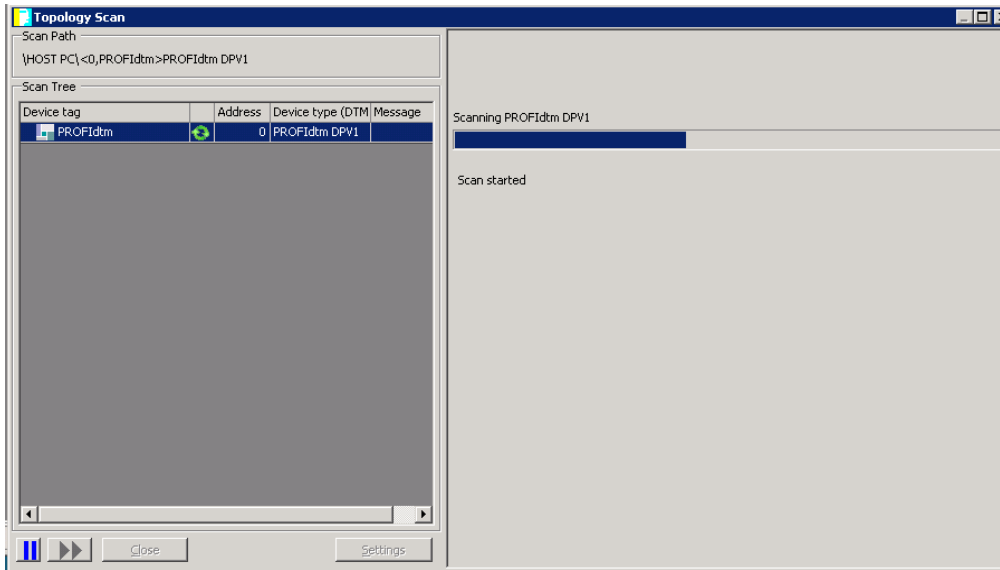
8. Right click on the PROFIdtm and select Topology Scan.



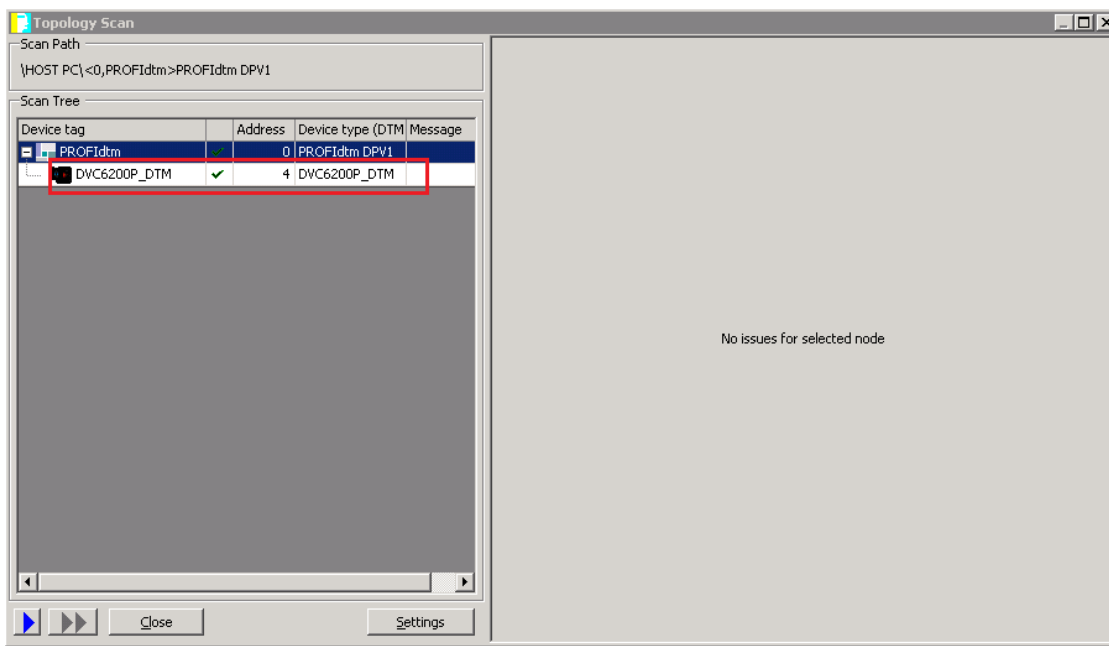
9. Click the Blue Arrow in the resulting window to start the scan.



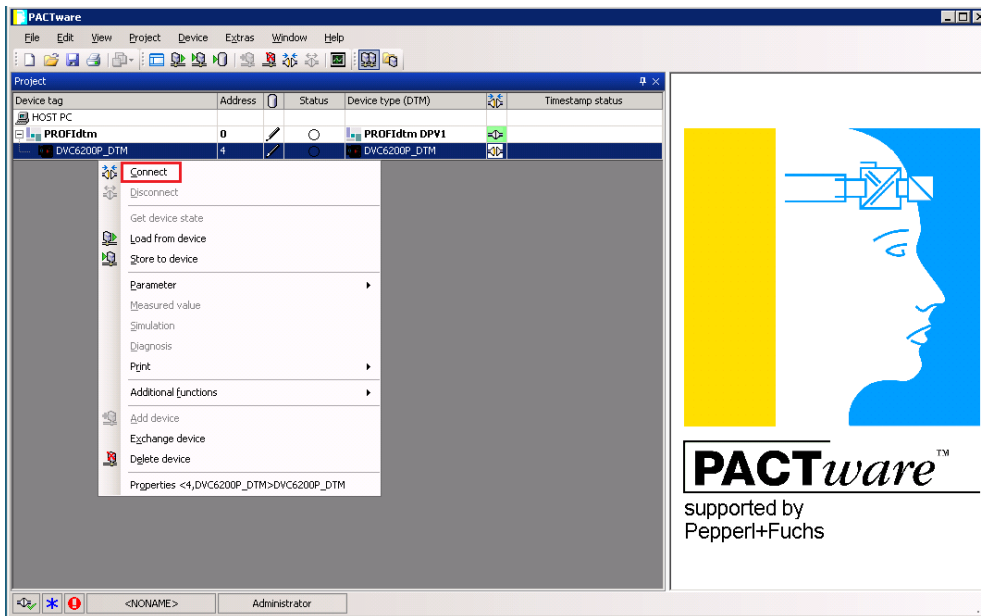
10. The scan is in Progress. Please wait...



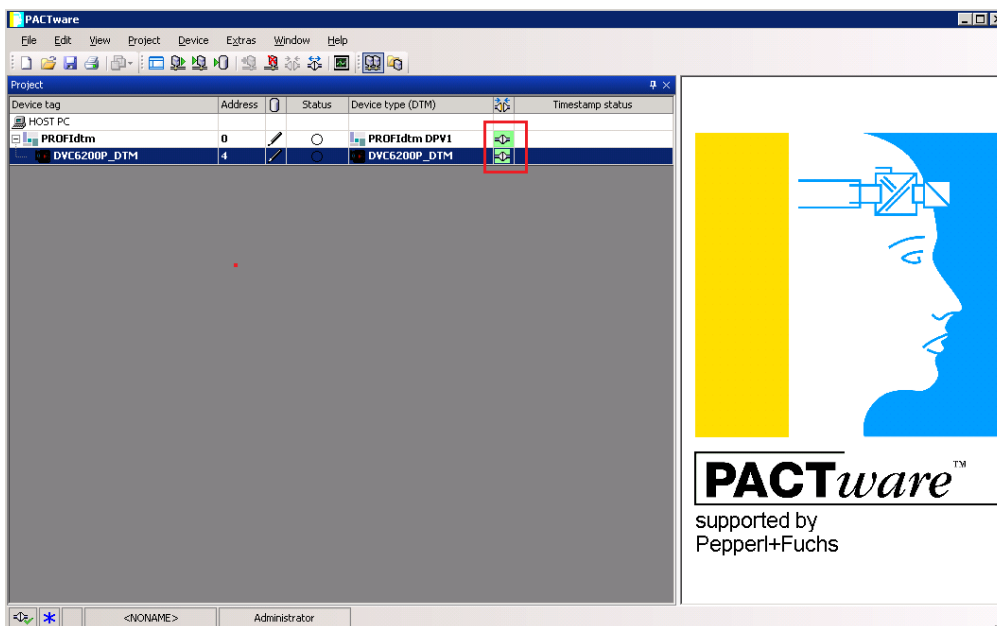
11. After the scan is completed the device DVC6200p_DTM is added to the Scan Tree as shown below. Click Close to exit the Topology Scan window.



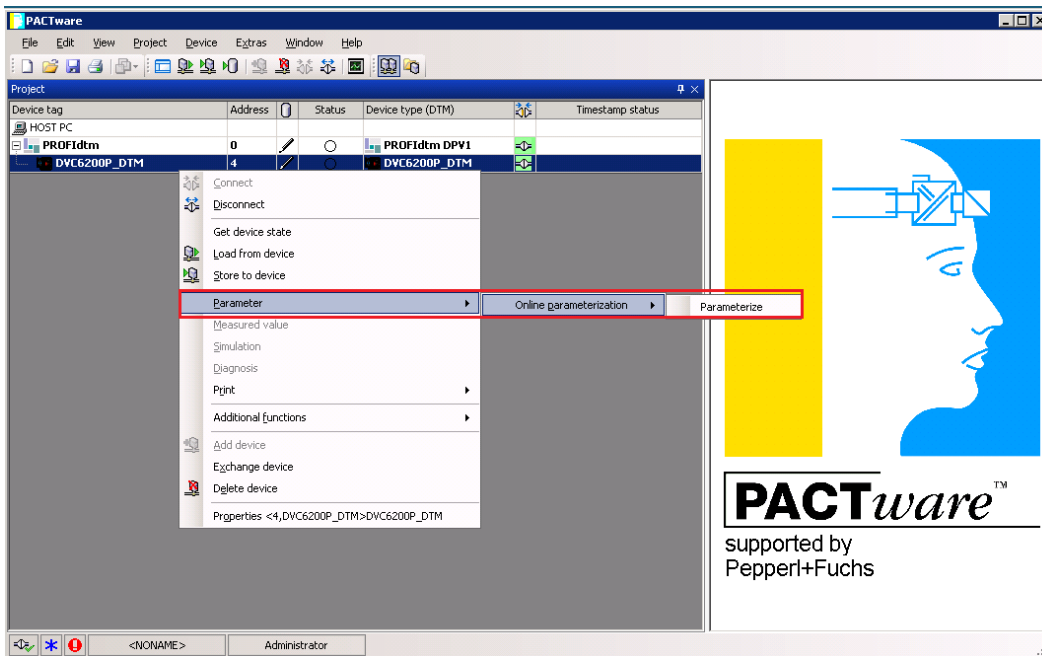
12. Right click on DVC6200P_DTM and click Connect.



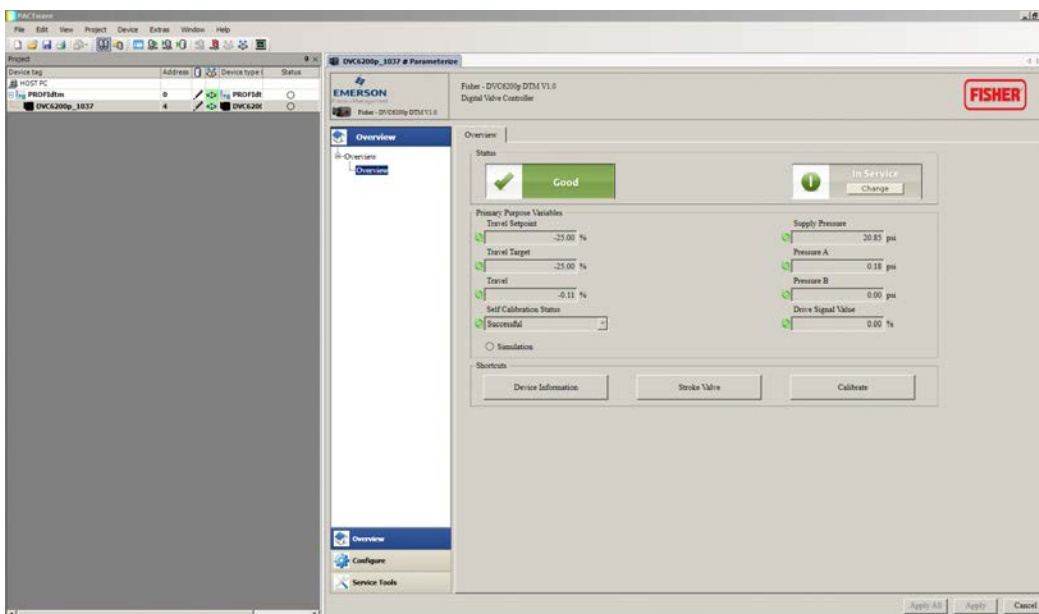
13. The DVC6200p DTM is now connected, denoted by the green Connection Status icon, as shown in the figure below.



14. Right click on the device and select Parameter > Online Parameterization > Parameterize.

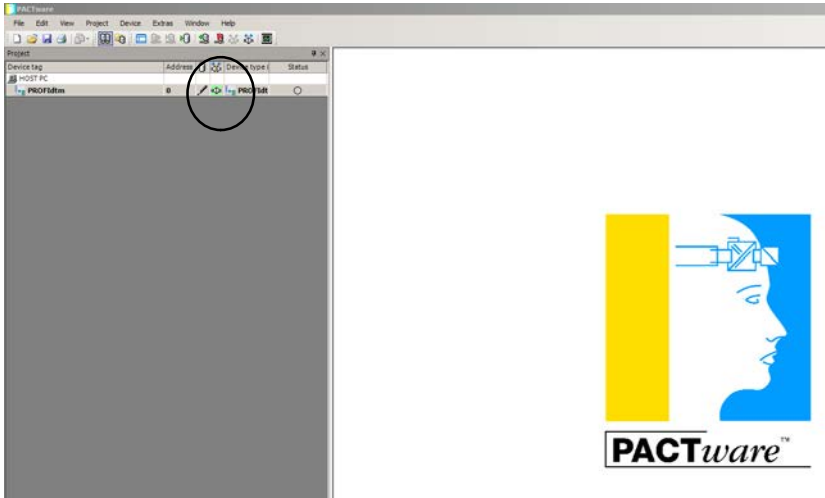


15. The device DVC6200P_DTM Parameterization is now launched in PACTware4.1 as shown below.

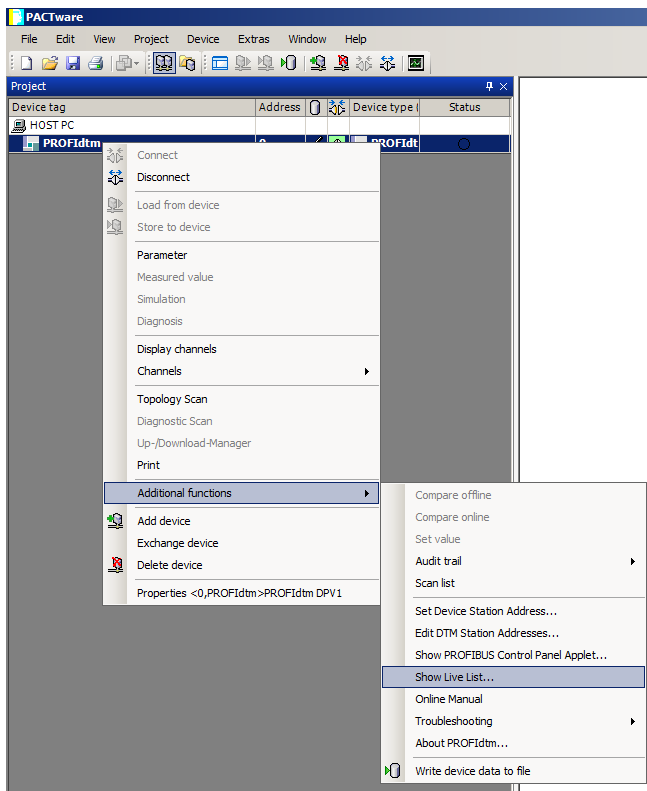


Changing the Device Address

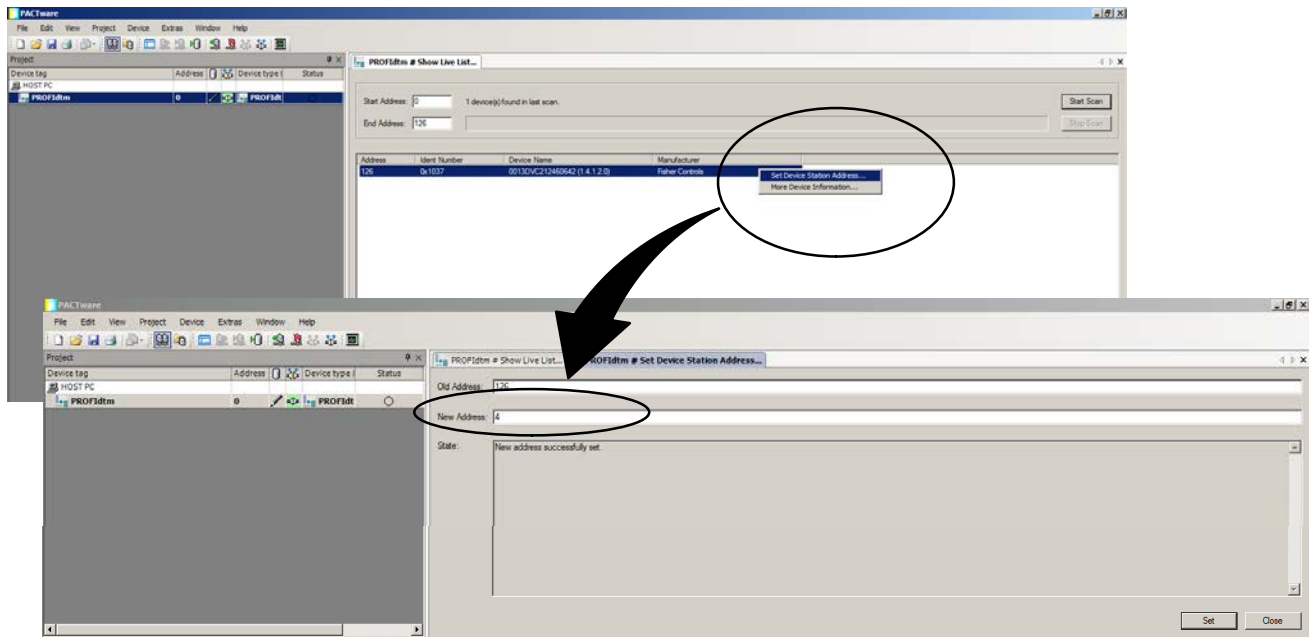
1. Confirm the PROFIBUS communication DTM is connected, as indicated by the green connection status icon.



2. Right-click PROFIDtm and select Additional functions > Show Live List... .



3. Right-click the selected device in the Live List and select Set Device Station Address. Type the desired address in New Address: and click Set.



Neither Emerson, Emerson Process Management, nor any of their affiliated entities assumes responsibility for the selection, use or maintenance of any product. Responsibility for proper selection, use, and maintenance of any product remains solely with the purchaser and end user.

Fisher is a mark owned by one of the companies in the Emerson Process Management business unit of Emerson Electric Co. Emerson Process Management, Emerson, and the Emerson logo are trademarks and service marks of Emerson Electric Co. All other marks are the property of their respective owners.

The contents of this publication are presented for informational purposes only, and while every effort has been made to ensure their accuracy, they are not to be construed as warranties or guarantees, express or implied, regarding the products or services described herein or their use or applicability. All sales are governed by our terms and conditions, which are available upon request. We reserve the right to modify or improve the designs or specifications of such products at any time without notice.

Emerson Process Management
Marshalltown, Iowa 50158 USA
Sorocaba, 18087 Brazil
Cernay, 68700 France
Dubai, United Arab Emirates
Singapore 128461 Singapore

www.Fisher.com