

Partial Stroke Test using ValveLink™ Mobile Software

Supplement to Fisher™ FIELDVUE™ DVC6200 SIS Digital Valve Controller Instruction Manual

A partial stroke test allows DVC6200 SIS digital valve controllers to perform a diagnostic test while the instrument is in service and operational. In a safety application, it is important to be able to exercise and test the valve to verify that it will open or close when commanded. If a safety demand arises, the partial stroke test will abort and the valve will move to its commanded position.

The test procedure contained in this Instruction Manual Supplement is to be considered as a guideline only and should be modified to address site-specific requirements. Use this procedure in conjunction with the [Safety Manual \(D103601X012\)](#), [Instruction Manual \(D103557X012\)](#) and [475 Field Communicator User's Manual](#), available from your [Emerson Process Management sales office](#) or at www.Fisher.com. In addition, exercise good engineering practices and abide by specific plant safety guidelines for safe operation.



Scan or click
to access
sales office
information

⚠ WARNING

This document is not intended to be used as a stand-alone document. It *must* be used in conjunction with the following documents:

[Safety Manual for FIELDVUE DVC6200 SIS Digital Valve Controller and Position Monitor \(D103601X012\)](#)

[Fisher FIELDVUE DVC6200 SIS Instruction Manual \(D103557X012\)](#)

Failure to use this instruction manual supplement in conjunction with the above referenced manuals could result in personal injury or property damage. If you have any questions regarding these instructions or need assistance in obtaining any of these documents, contact your [Emerson Process Management sales office](#).

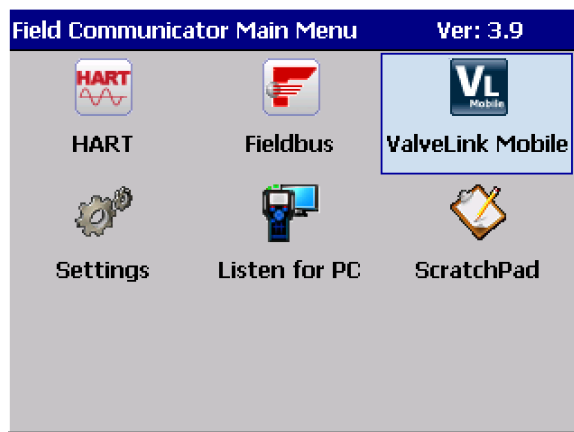
Note

This procedure requires the use of ValveLink Mobile Software and a 475 Field Communicator. This procedure should be performed with the digital valve controller's Instrument Mode set to "In Service".

Partial Stroke Test Procedure

1. Physically inspect the valve and the DVC6200 SIS for any loose screws, loose mounting bracket, loose feedback linkage, loose or broken tubing/conduit or the other mechanically loose conditions. Check the air filter regulator to ensure that it is clean and operating properly. Inspect gauges and verify that they are reading correctly.
2. Connect the 475 Communicator to the DVC6200 SIS digital valve controller. Be sure to carefully read, understand, and follow the contents of the [475 User's Manual](#), including all safety cautions and warnings.
3. Initiate ValveLink Mobile software within the 475 Field Communicator (figure 1).

Figure 1. Field Communicator Main Menu



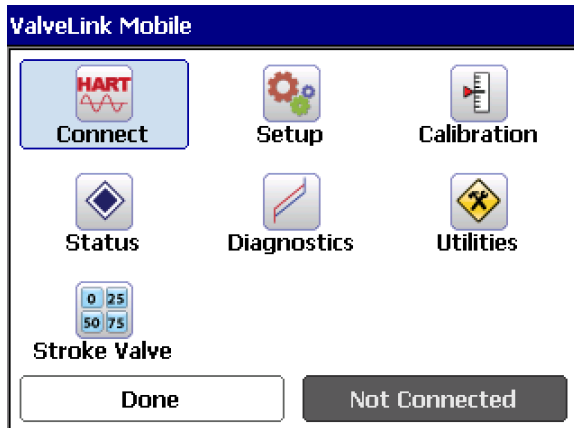
4. In the 475 Handheld Communicator select “HART” communication from the ValveLink Mobile Main Menu (figure 2).

Figure 2. ValveLink Mobile Main Menu



5. Connect to your device by selecting the “HART Connect” icon (figure 3). Verify the valve is “Connected” and “In Service” by looking at the bottom right hand corner.

Figure 3. ValveLink Mobile HART Menu



6. Once connected to your valve, you will be able to find “Partial Stroke” in the “Diagnostics” menu (figure 4 and 5).

Figure 4. ValveLink Mobile HART Main Menu after valve is connected and placed in service. Diagnostics icon is selected.

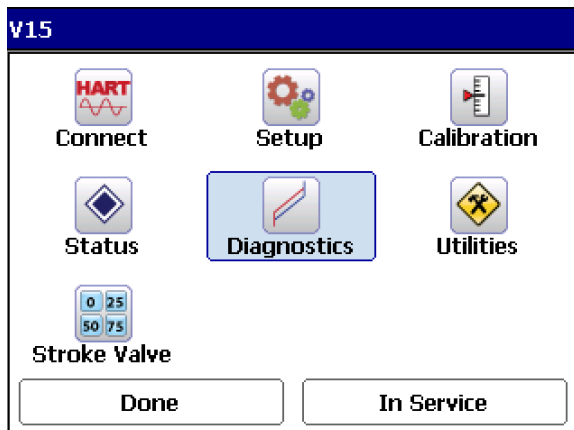
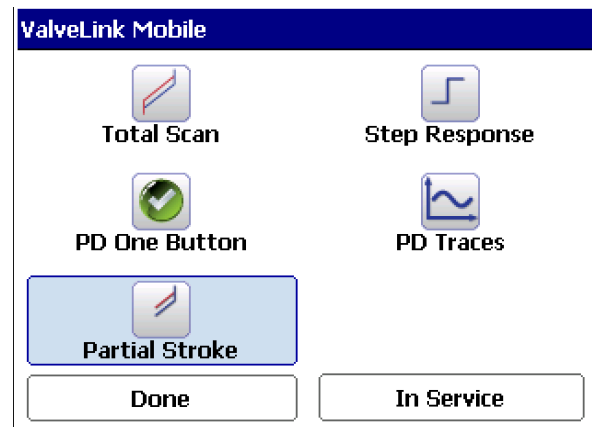


Figure 5. Diagnostics Menu



7. After selecting Partial Stroke a notification will appear, warning that running a diagnostic will move the valve (figure 6). Select “Start” (figure 7).

Figure 6. Partial Stroke Test Warning

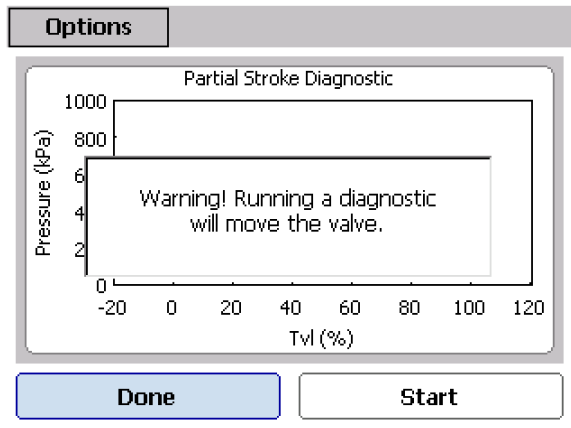
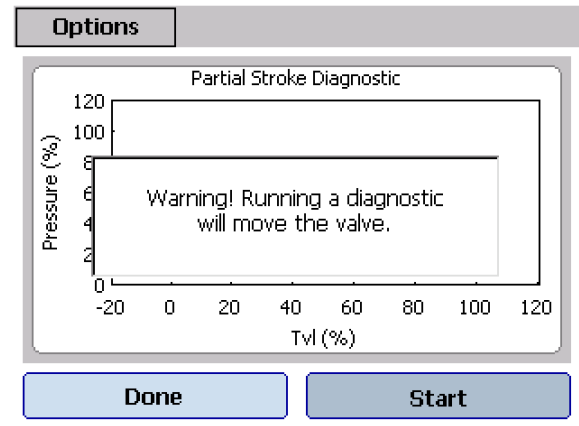


Figure 7. Partial Stroke Test Warning with Start Selected



8. The Partial Stroke Test has begun. The test will begin by “Reading Spec Sheet” (figure 8) and “Reading data” (figure 9).

Figure 8. Partial Stroke Test in Progress – Reading Spec Sheet

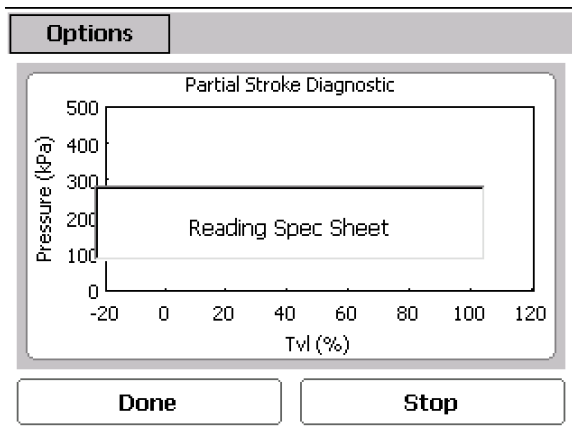
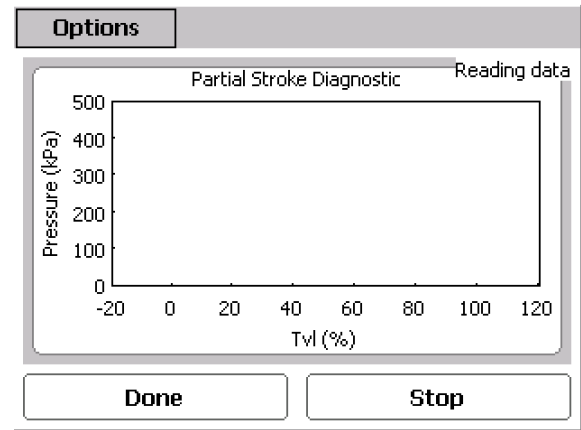


Figure 9. Partial Stroke Test in Progress - Reading data



9. You will begin to see the results showing on the screen (figure 10). Completed results example shown in figure 11. Select Done.

Figure 10. Partial Stroke Test in Progress – Reading data

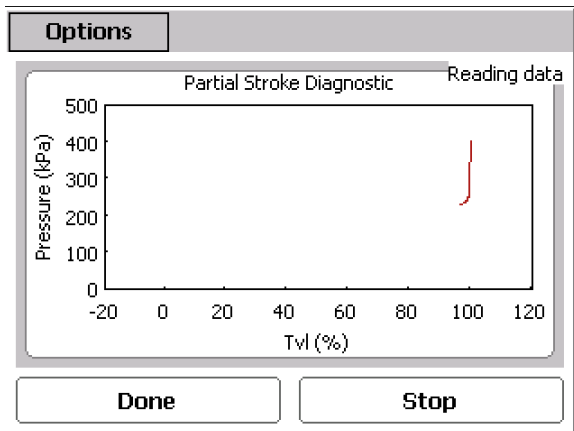
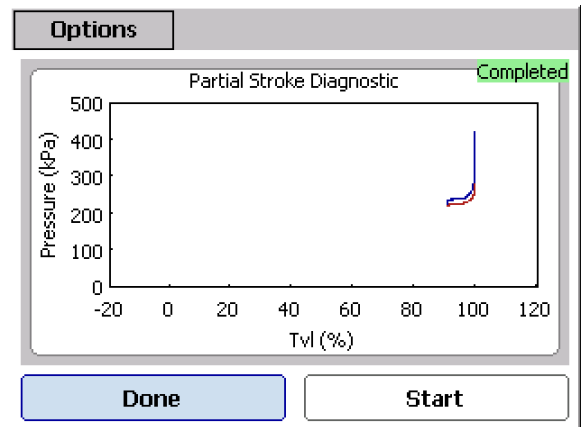


Figure 11. Partial Stroke Test Completed



The information will save under the tag name in ValveLink Mobile. These results may be exported to ValveLink Software on a PC at a later time if necessary.

Neither Emerson, Emerson Process Management, nor any of their affiliated entities assumes responsibility for the selection, use or maintenance of any product. Responsibility for proper selection, use, and maintenance of any product remains solely with the purchaser and end user.

Fisher, FIELDVUE and ValveLink Mobile are marks owned by one of the companies in the Emerson Process Management business unit of Emerson Electric Co. Emerson Process Management, Emerson, and the Emerson logo are trademarks and service marks of Emerson Electric Co. All other marks are the property of their respective owners.

The contents of this publication are presented for informational purposes only, and while every effort has been made to ensure their accuracy, they are not to be construed as warranties or guarantees, express or implied, regarding the products or services described herein or their use or applicability. All sales are governed by our terms and conditions, which are available upon request. We reserve the right to modify or improve the designs or specifications of such products at any time without notice.

Emerson Process Management
Marshalltown, Iowa 50158 USA
Sorocaba, 18087 Brazil
Cernay, 68700 France
Dubai, United Arab Emirates
Singapore 128461 Singapore

www.Fisher.com