

Mounting Instructions

D103997X012
May 2014

DVC6200/DVC2000
Digital Valve Controller on
(Old Namur) Sliding Stem Actuator

Use these instructions to mount a FIELDVUE™ DVC6200 or DVC2000.

⚠ WARNING

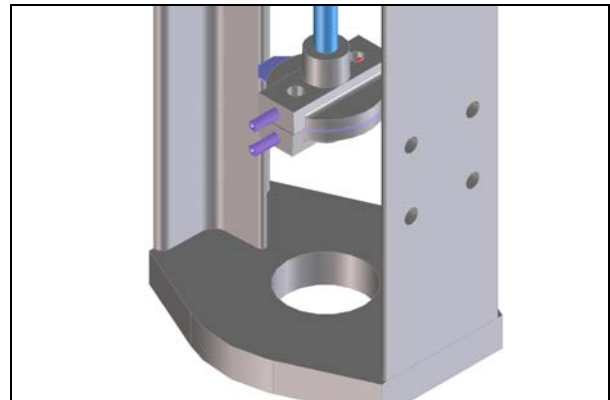
Avoid personal injury or property damage from sudden release of process pressure or bursting of parts. Before performing any maintenance operations:

- Always wear protective clothing, gloves, and eyewear.
- Do not remove the actuator from the valve while the valve is still pressurized.
- Disconnect any operating lines providing air pressure, electric power, or a control signal to the actuator. Be sure the actuator cannot suddenly open or close the valve.
- Use bypass valves or completely shut off the process to isolate the valve from process pressure. Relieve process pressure from both sides of the valve.
- Vent the pneumatic actuator loading pressure and relieve any actuator spring precompression.
- Use lock-out procedures to be sure that the above measures stay in effect while you work on the equipment.
- Check with your process or safety engineer for any additional measures that must be taken to protect against process media.

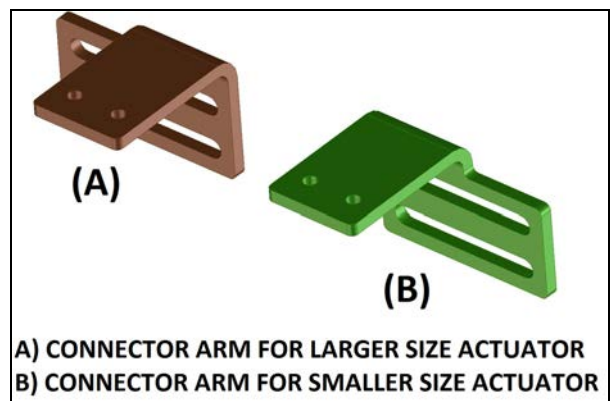
Refer to the appropriate actuator instruction manual for actuator installation, operation, maintenance, and parts identification as this manual may or may not include all components shown for kit installation.

1. Isolate the control valve from the process line pressure and release pressure from both sides of the valve body. Shut off all pressure lines to the actuator, releasing all pressure from the actuator. Use lock-out procedures to be sure that the above measures stay in effect while you work on the equipment.

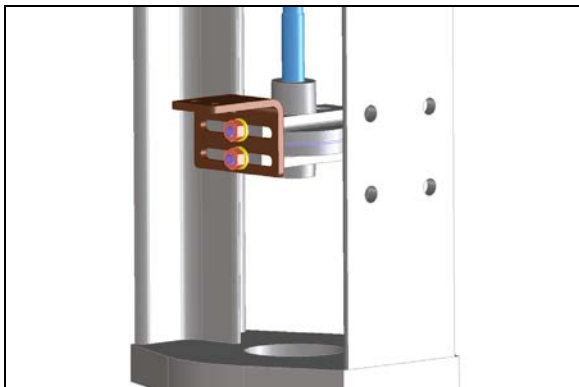
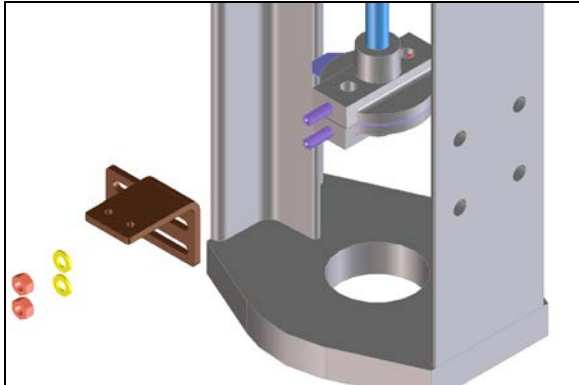
2. Install set screws into stem block.



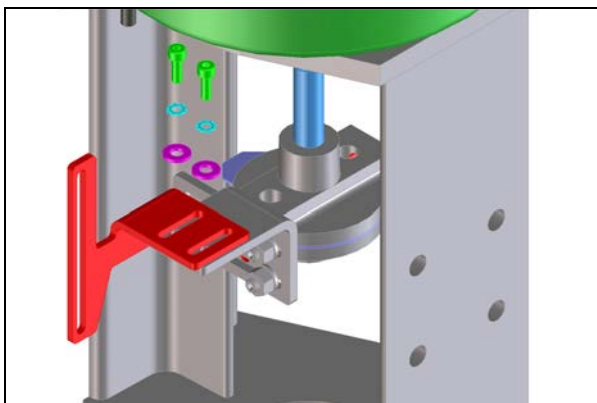
3. Attach arm connector onto stem block set screws. Two connecting arms are provided one suitable for use with large actuators and one for use with small actuators; select the appropriate one for the actuator being used.



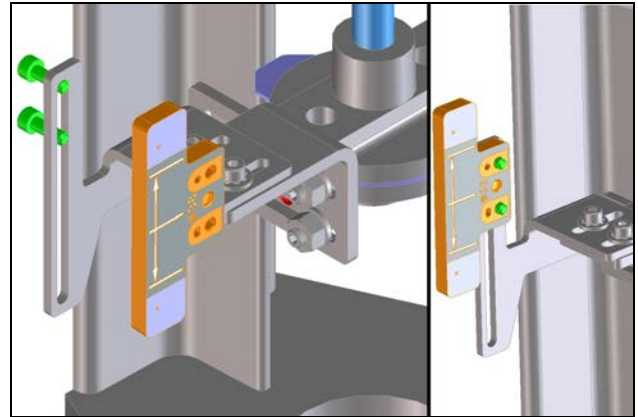
4. Loosely (for later adjustment) attach washers and nuts to set screws.



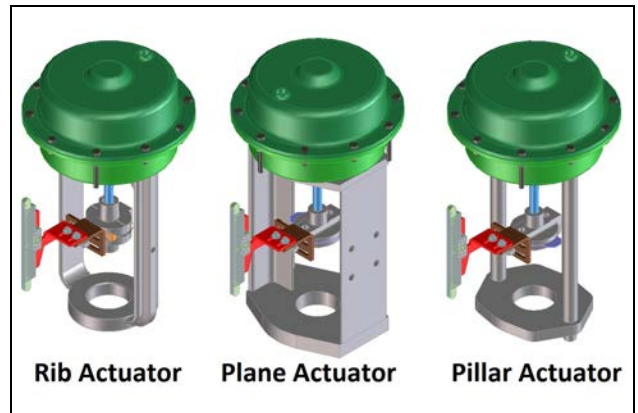
5. Attach extension arm to connector arm.



6. Connect array to extension arm with supplied fasteners. Leave fasteners loose enough for fine adjustment.



7. Attach mounting bracket to actuator.



For Rib Actuator go to step 8a.

For Plane Actuator go to step 8b.

For Pillar Actuator go to step 8c.

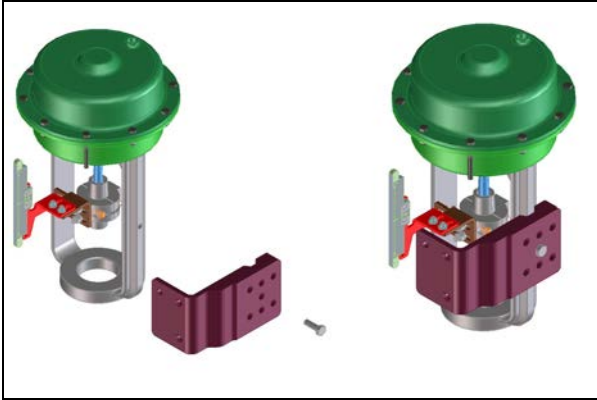
Mounting Instructions

D103997X012
May 2014

DVC6200/DVC2000
Digital Valve Controller on
(Old Namur) Sliding Stem Actuator

8a. Rib Actuator

Attach mounting bracket to actuator using supplied M8 hex head fastener.

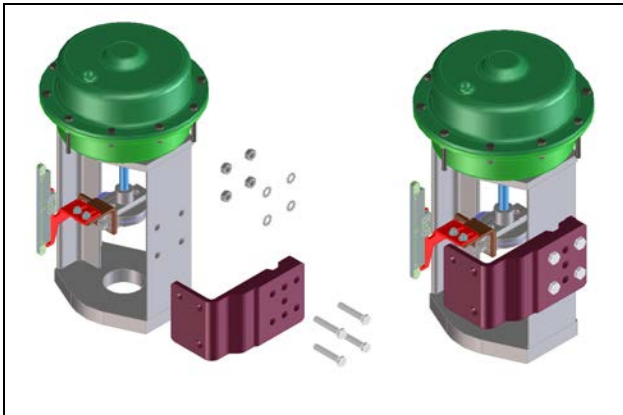


Skip to step 9.

8b. Plane Actuator

Attach mounting bracket to actuator using supplied fasteners.

- (4) M8X45 Hex Head Screws
- (4) External Tooth Lock Washer
- (4) M8 Hex Nuts



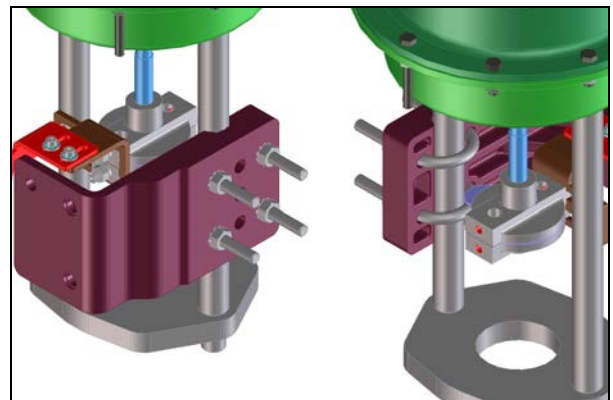
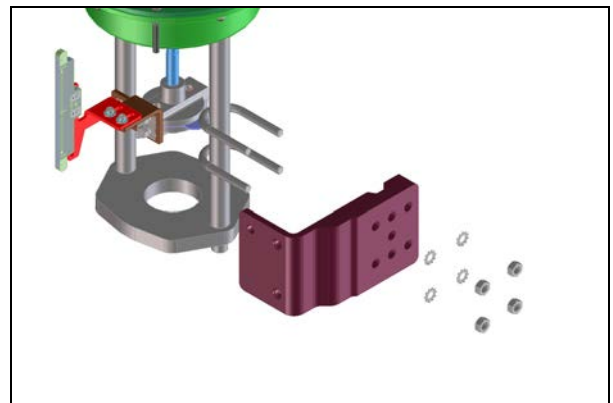
Skip to Step 9

8c. Pillar Actuator

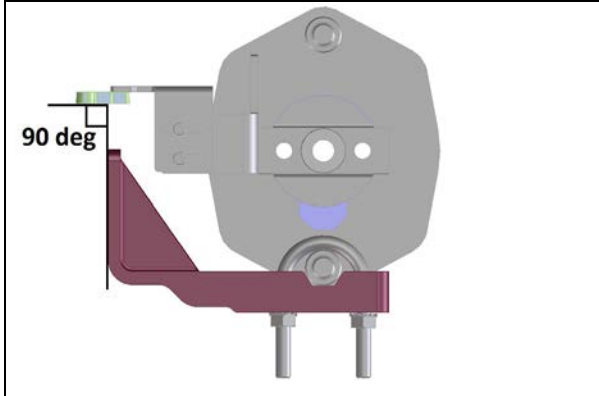
Use hardware to attach mounting bracket to pillar. Ensure device mounting plane is perpendicular to array.

Hardware:

- (2) M8 Round U Bolt
- (4) External Tooth Lock Washer
- (4) M8 Hex Nuts

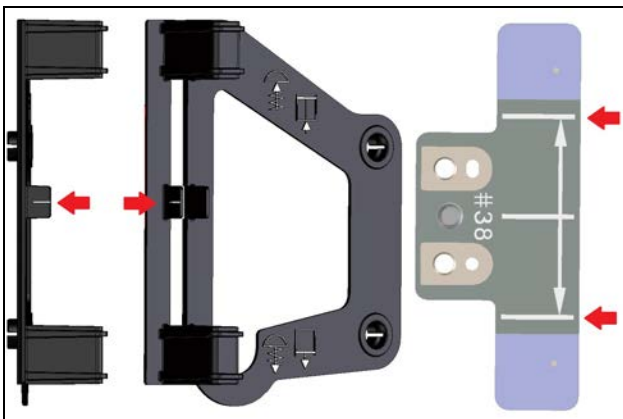


Ensure device mounting plane is perpendicular to array.

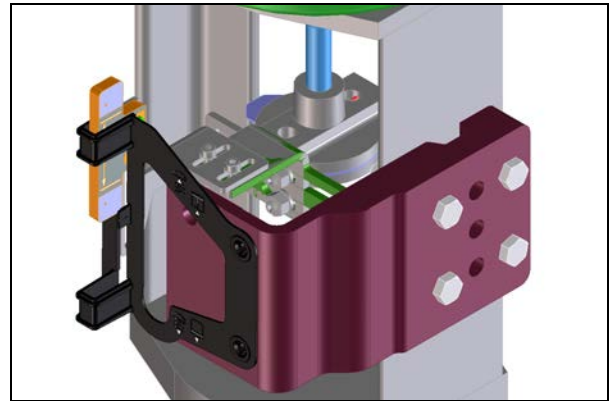


9. Attach alignment template to mounting bracket. Adjust array to line up with alignment template. If Actuator stroke is in the up position, use Step 10a. If Actuator stroke is in the down position, use Step 10b. Ensure that the index mark of the alignment tool will be in between the array index marks.

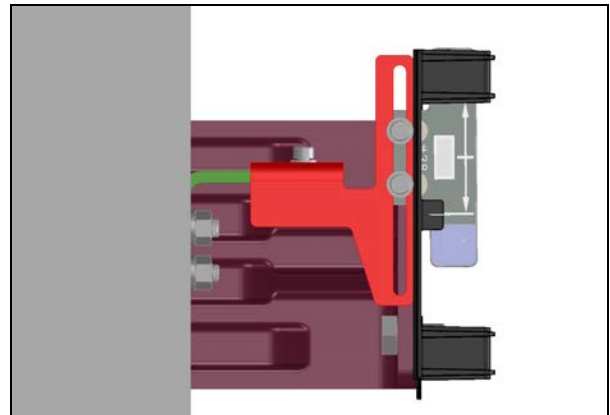
(Index Lines are shown below with arrows)



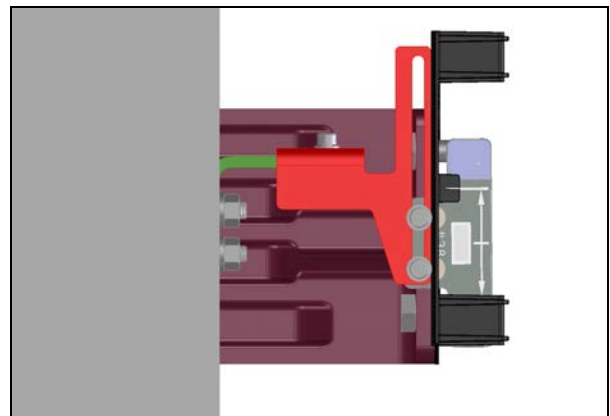
(Array Kit sold separately)



10a. Align array bottom index line with alignment template index line.



10b. Align array top index line with alignment template index line.

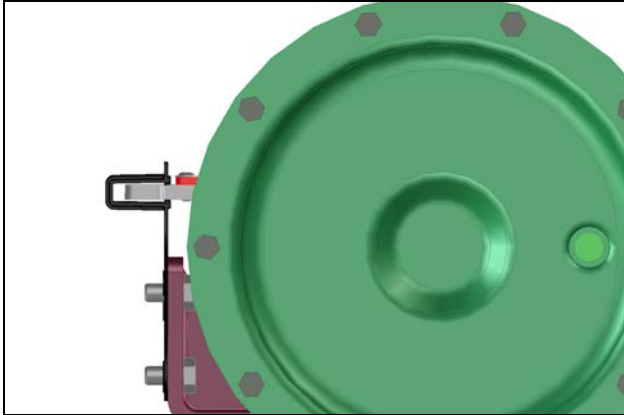


Mounting Instructions

D103997X012
May 2014

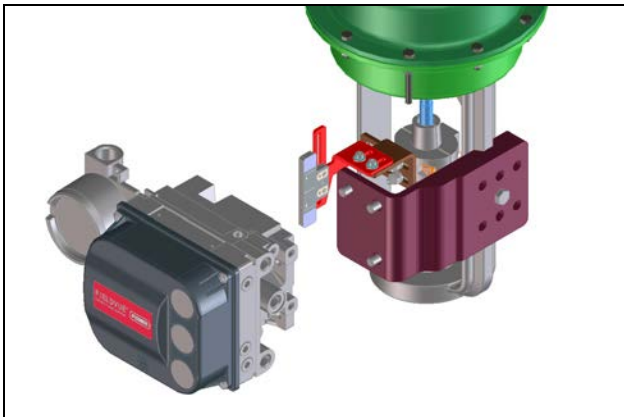
DVC6200/DVC2000
Digital Valve Controller on
(Old Namur) Sliding Stem Actuator

11. Align array laterally with the alignment template.



12. Tighten all fasteners to lock array into position. Loctite® Thread Locker 242® is recommended but not supplied.

13. Remove alignment tool, and attach device to mounting bracket with supplied M8 fasteners.



(Device Mounted to Bracket Isometric View)

14. Double check that Array will travel without obstruction in valley of device.



Complete Rib Actuator



Complete Pillar Actuator



Complete Plane Actuator

Bill of Materials

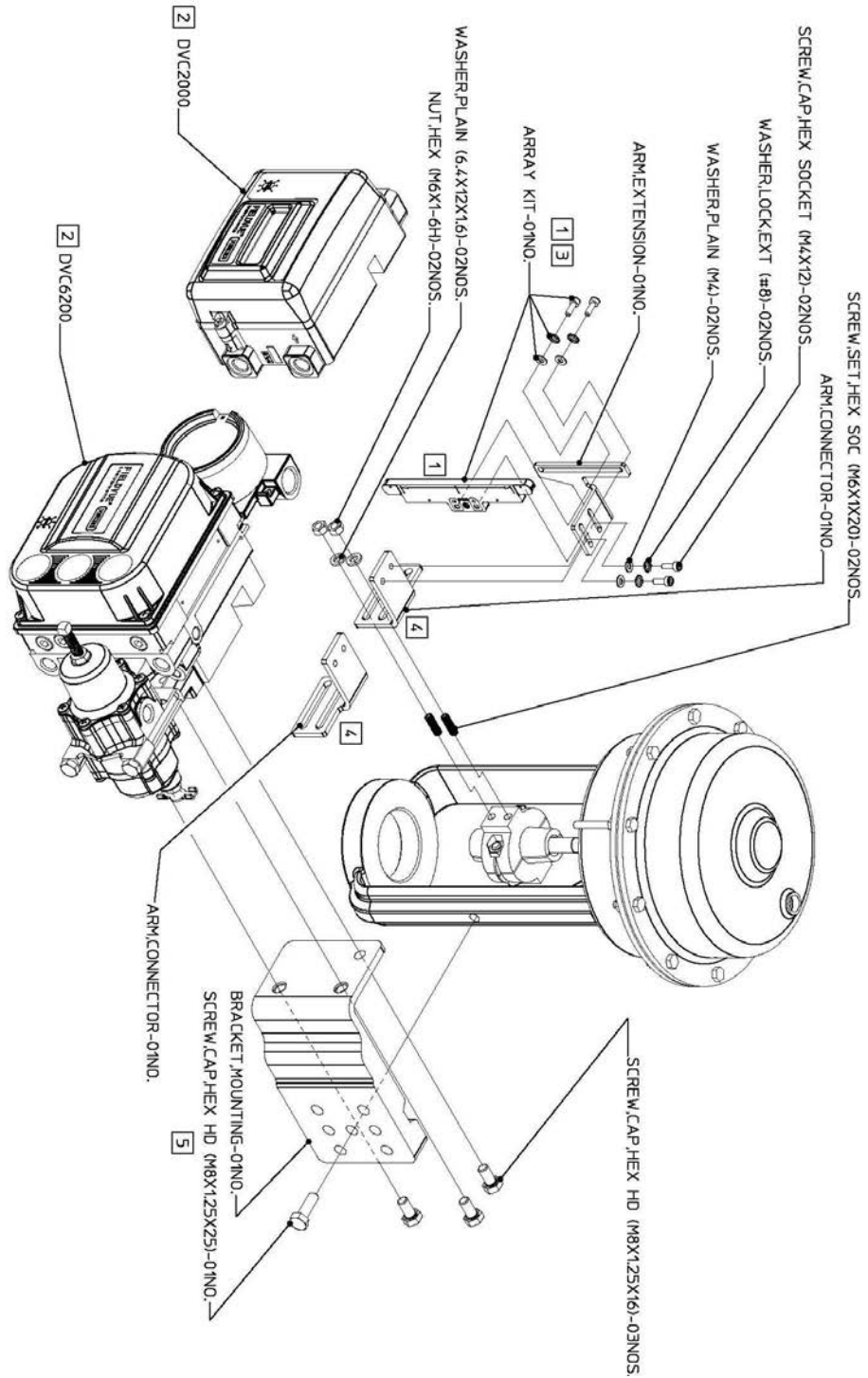
QTY	Description
4	Hex Head Cap Screw M8X1.25X45
2	External Tooth Lock Washer #8
2	Washer M4
4	Hex Nut M8X1.25
3	Hex Head Cap Screw M8X1.25X16
2	Hex Nut M6X1.0
1	Hex Head Cap Screw M8X1.25X25
2	Socket Head Cap Screw M4x12
2	Washer 6.4X12X1.6
2	Socket Head Cap Screw M6X1X20
1	Mounting Bracket
1	Arm Connector (A)
1	Arm Connector (B)
1	Arm Extension
2	U-Bolt M8X1.25X69
4	External Tooth Lock Washer M8
1	Array Kit (Sold Separately)

Mounting Instructions

D103997X012
May 2014

DVC6200/DVC2000 Digital Valve Controller on (Old Namur) Sliding Stem Actuator

- 1 ARRAY KIT WITH FASTENERS IS SOLD SEPARATELY
- 2 MOUNTING KIT CAN BE USED WITHER WITH DVC6200 OR DVC2000
- 3 RECOMMEND LOCTITE ® THREAD LOCKER BLUE 242 ®
- 4 TWO DIFFERENT CONNECTOR ARMS PROVIDED-
USER TO SELECT ONE BASED ON ACTUATOR REQUIREMENT
- 5 SELECT FROM PROVIDED HARDWARE PER ACTUATOR MOUNTING REQUIREMENT

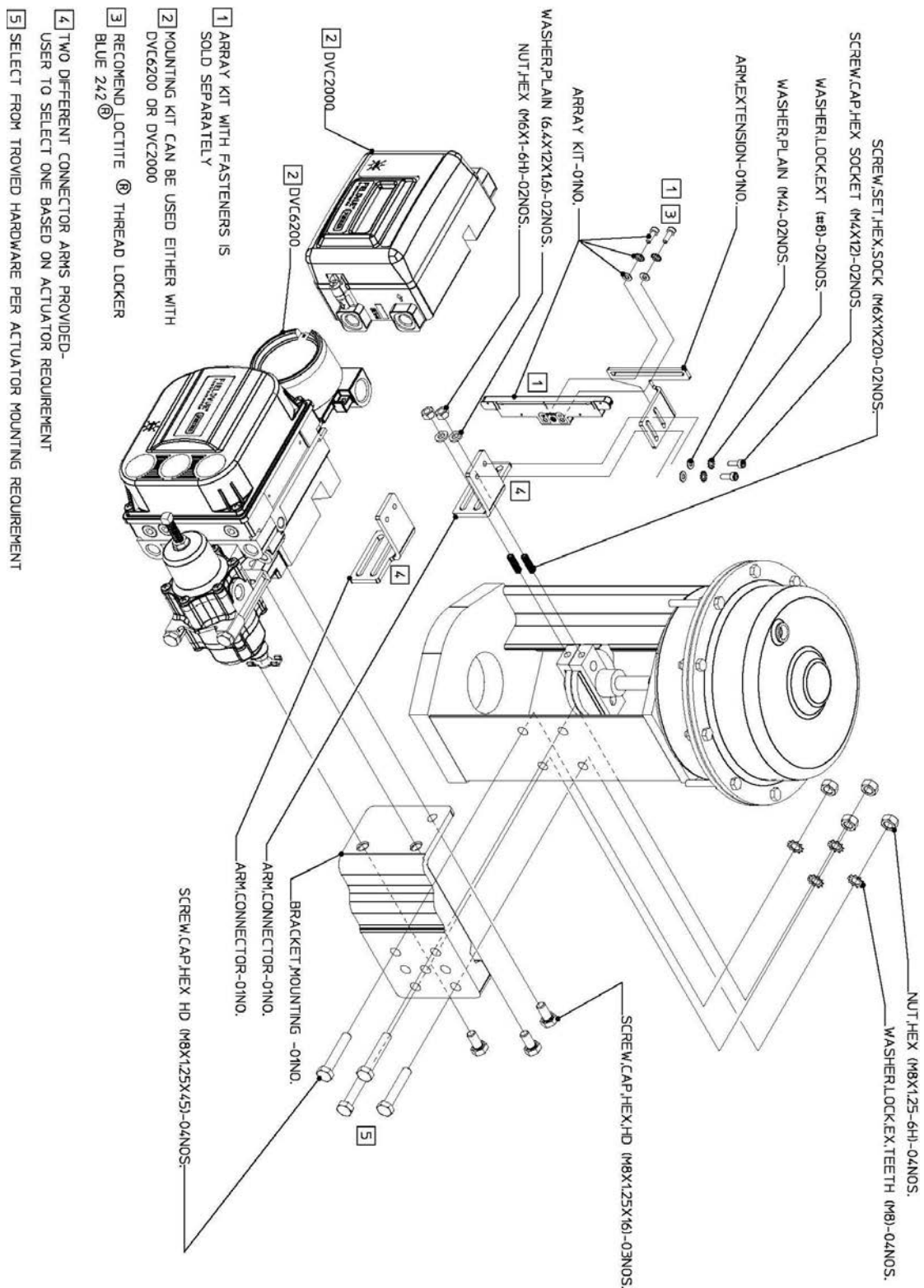


DVC6200/DVC2000
Digital Valve Controller on
(Old Namur) Sliding Stem Actuator

Mounting Instructions

D103997X012

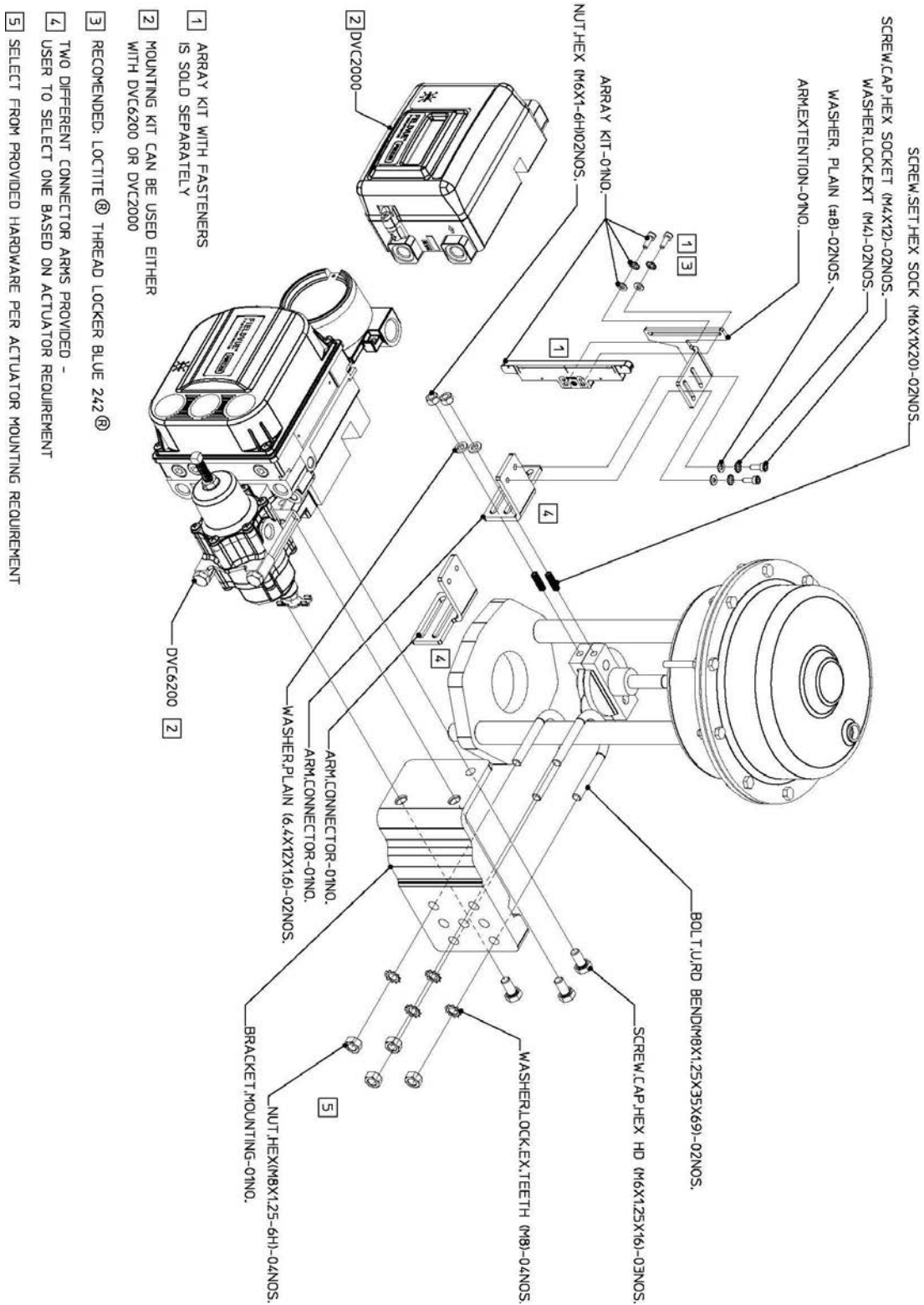
May 2014



Mounting Instructions

D103997X012
May 2014

DVC6200/DVC2000
Digital Valve Controller on
(Old Namur) Sliding Stem Actuator



- 1 ARRAY KIT WITH FASTENERS IS SOLD SEPARATELY
- 2 MOUNTING KIT CAN BE USED EITHER WITH DVC6200 OR DVC2000
- 3 RECOMMENDED: LOCTITE® THREAD LOCKER BLUE 242®
- 4 TWO DIFFERENT CONNECTOR ARMS PROVIDED - USER TO SELECT ONE BASED ON ACTUATOR REQUIREMENT
- 5 SELECT FROM PROVIDED HARDWARE PER ACTUATOR MOUNTING REQUIREMENT

Air Filter Regulator



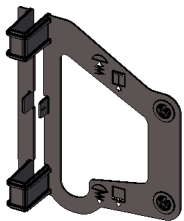
DVC6200



Common Mounting Bracket



Alignment Template



Extension Arm



Shield



Connector Arm



Linear Feedback Array



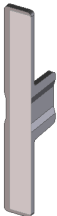
Spacer



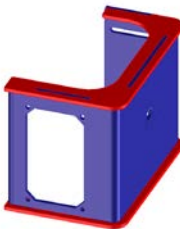
DVC2000



Insert Assembly



U-Bracket



Neither Emerson, Emerson Process Management, Fisher, nor any of their affiliated entities assumes responsibility for the selection, use and maintenance of any product. Responsibility for the selection, use and maintenance of any product remains with the purchaser and end user.

Fishe and FIELDVUE are marks owned by Fisher Controls International LLC, a member of the Emerson Process Management business unit of Emerson Electric Co. Emerson Process Management, Emerson, and the Emerson logo are trademarks and service marks of Emerson Electric Co. All other marks are the property of their respective owners.

The contents of this publication are presented for informational purposes only, and while every effort has been made to ensure their accuracy, they are not to be construed as warranties or guarantees, express or implied, regarding the products or services described herein or their use or applicability. We reserve the right to modify or improve the designs or specifications of such products at any time without notice.

Emerson Process Management

Marshalltown, Iowa 50158 USA

Sorocaba, 18087 Brazil

Chatham, Kent ME4 4QZ UK

Dubai, United Arab Emirates

Singapore 128461 Singapore

www.Fisher.com