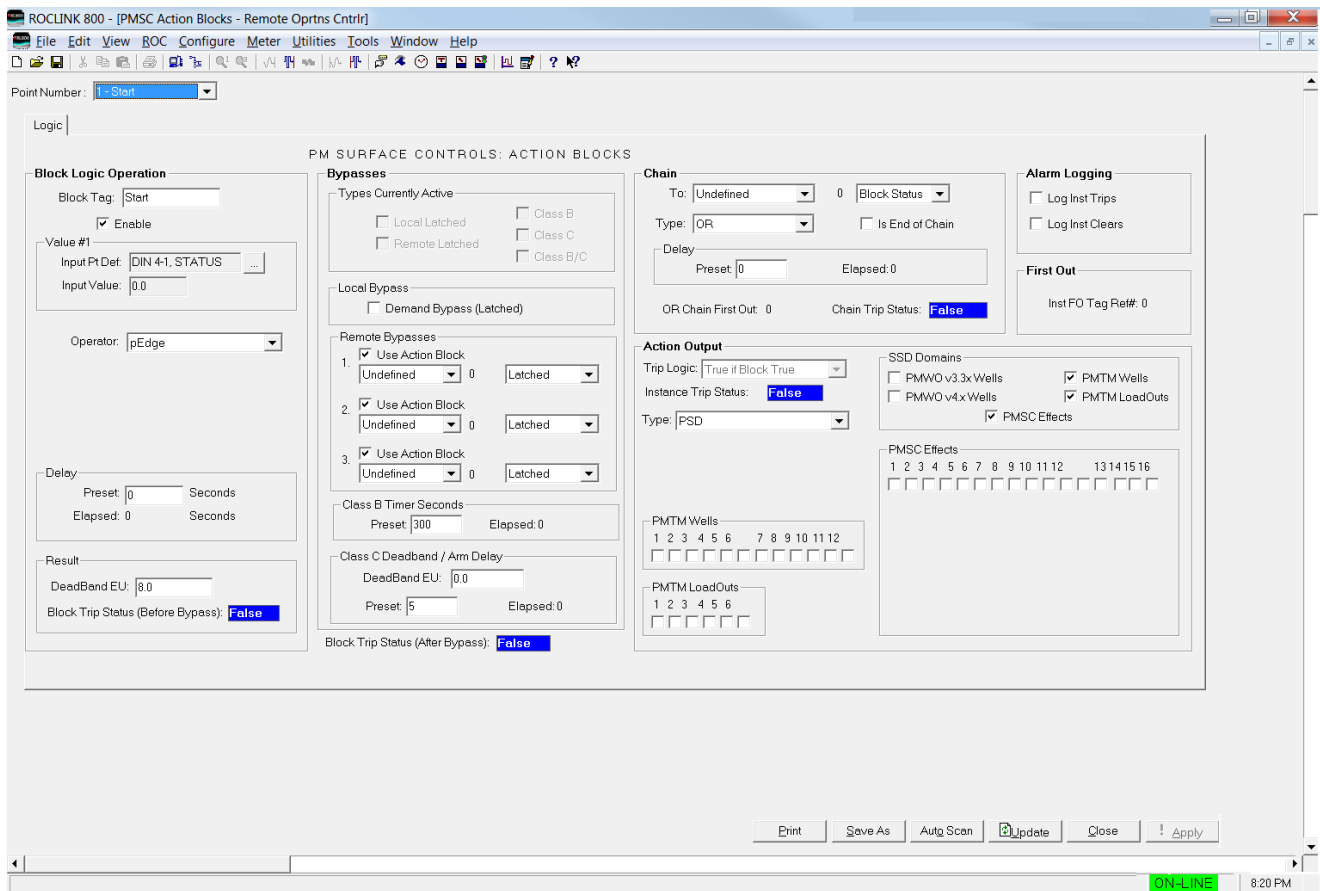


Surface Control Manager User Manual (for ROC800-Series and FloBoss™ 107 Controllers)



Revision Tracking Sheet

January 2017

This manual may be revised periodically to incorporate new or updated information. The revision date of each page appears at the bottom of the page opposite the page number. A change in revision date to any page also changes the date of the manual that appears on the front cover. Listed below is the revision date of each page (if applicable):

Page	Revision
All Pages	January-2017
All Pages	August-2016
Initial release	September-2014

Contents

Chapter 1 – Introduction	1
1.1 Scope and Organization	1
1.2 Product Overview	2
1.3 Program Requirements	2
1.3.1 License Key	3
Chapter 2 – Installation	5
2.1 Installing the License Key	5
2.1.1 Installing the License Key for the ROC800	5
2.1.2 Installing the License Key for the FB107	6
2.1.3 Verifying the License Key Installation (for ROC800)	7
2.2 Downloading the Program	8
2.2.1 Surface Control Program	8
2.2.2 PMCB Calculation Blocks Program	12
2.3 MPU Loading Threshold (ROC800)	16
Chapter 3 – Configuration	17
3.1 PMSC Action Blocks Screen	18
3.2 PMSC Utilities Screens	25
3.2.1 PMSC Utilities Screen – PMSC Effects Tab	27
3.2.2 PMSC Utilities Screen – Time Count Tab	29
3.2.3 PMSC Utilities Screen – Accumulators/Outputs Tab	32
3.2.4 PMSC Utilities Screen – Alarm Blocks Tab	35
3.2.5 PMSC Utilities Screen – Action Block Domain Statuses Tab	38
3.3 PMCB Calculation Blocks	42
3.4 Saving the Configuration	47
3.5 Sample Configurations	48
3.5.1 Controlling a Pump based on Tank Level	48
3.5.2 Connecting Two Blocks with an AND Statement	49
3.5.3 Connecting Two Block with an OR Statement	51
3.5.4 Setting Up a Class B Bypass	54
3.5.5 Creating a Timed Maintenance Bypass	56
Chapter 4 – Reference	59
4.1 Point Type 68/28: Action Blocks	60
4.2 Point Type 71/31: Utilities	68
4.3 Point Type 218: Calculation Blocks (for ROC800)	75
4.4 Point Type 27/39: Calculation Blocks (for FB107)	78
Appendix A – PMCB Calculation Blocks – Supported Functions	87
A.1 Calculations: Rules and Guidelines	87
A.1.1 Execution Order	87
A.1.2 Order of Operators	87
A.1.3 Parentheses	88
A.1.4 Operands	88

- A.2 Operators..... 89
 - A.2.1 Mathematical Operators 89
 - A.2.2 Comparison Operators 90
 - A.2.3 Bitwise Operators 91
 - A.2.4 Logical Operators 92
- A.3 Functions 92
 - A.3.1 AND(): Logical AND 92
 - A.3.2 OR(): Logical OR 93
 - A.3.3 Boolean Calculations using AND(), OR() and NOT(!) Operators 93
 - A.3.4 ABS(): Absolute Value..... 93
 - A.3.5 INT(): Integer Value 94
 - A.3.6 MOD(): Modulus 94
 - A.3.7 POW(): Raise To The Power Of 95
 - A.3.8 SUM(): Summation 95
 - A.3.9 MIN(): Minimum Value..... 95
 - A.3.10 MAX(): Maximum Value 95
 - A.3.11 IIF(): Inline IF 96
 - A.3.12 BFI(): Boolean FAN-IN 96
 - A.3.13 BFO(): Boolean FAN-OUT 96
 - A.3.14 FOR(): FOR Loop 98