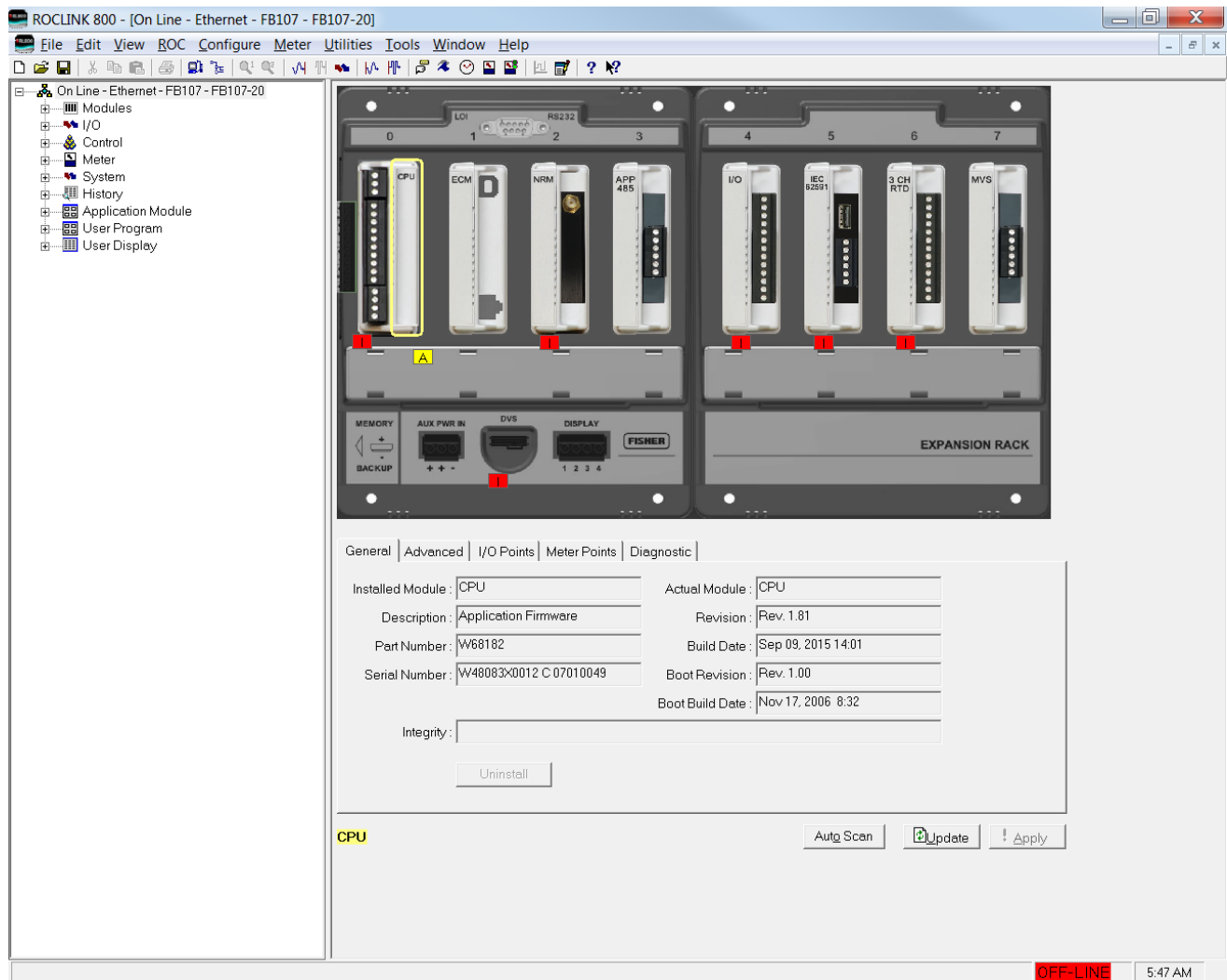


ROCLINK™ 800 Configuration Software User Manual (for FloBoss™ 107)



Revision Tracking Sheet

November 2016

This manual may be revised periodically to incorporate new or updated information. The revision date of each page appears at the bottom of the page opposite the page number. A change in revision date to any page also changes the date of the manual that appears on the front cover. Listed below is the revision date of each page (if applicable):

Page	Revision
All Pages	November 2016
All Pages	January 2016
Initial release	January 2008

Contents

Chapter 1 – Introduction	1-1
1.1 ROCLINK 800 Software Description	1-1
1.2 Computer Requirements	1-2
1.3 Contacting Technical Support	1-2
1.4 Software Installation	1-2
1.4.1 Installing ROCLINK 800 under Windows 8 and Windows 7	1-4
1.4.2 Un-installing ROCLINK 800	1-16
1.5 Starting ROCLINK 800 Software.....	1-16
1.5.1 Logging On.....	1-17
1.6 User Interface Basics	1-18
1.6.1 The FloBoss 107 Dynamic Interface.....	1-19
1.6.2 Actual versus Installed Module	1-22
1.6.3 Standard Buttons	1-23
1.6.4 Toolbar Buttons.....	1-23
1.6.5 Configuration Tree Menu	1-25
1.6.6 Keystrokes	1-26
1.6.7 Help System.....	1-27
1.6.8 Basic Navigation	1-27
1.6.9 Text Boxes	1-29
Chapter 2 – Device Directory and Device Root	2-1
2.1 Device Directory.....	2-1
2.1.1 Communication Parameter Setup Screen	2-2
2.2 Device Root.....	2-4
2.2.1 Backing Up Configurations	2-4
2.2.2 Adding a Group.....	2-5
2.2.3 Deleting a Group.....	2-5
2.2.4 Deleting a Device.....	2-5
2.2.5 Adding a Device.....	2-6
2.2.6 Deleting All Devices	2-6
2.2.7 Renaming a Group or Device	2-7
Chapter 3 – Communications and Security	3-1
3.1 Communications.....	3-1
3.2 ROCLINK 800 Communications	3-2
3.2.1 ROCLINK 800 Communications Parameters General Tab	3-2
3.2.2 ROCLINK 800 Communications Parameters Advanced Tab	3-4
3.3 Communication Ports on the FB107	3-6
3.4 Communication Modules.....	3-7
3.4.1 Dial-up Modem Module.....	3-7
3.4.2 Enhanced Communication Module	3-8
3.4.3 Network Radio Module.....	3-10
3.5 Configuring FB107 Communications Ports.....	3-13
3.5.1 Comm Ports – General Tab	3-13
3.5.2 Comm Ports – Modem Tab.....	3-15
3.5.3 Comm Ports – RBX Tab	3-16
3.5.4 Enhanced Comm Tab	3-18
3.5.5 Network Radio Module – Network Tab	3-20
3.5.6 Network Radio Module – Advanced Tab	3-20

3.6	Connecting to an FB107	3-21
3.6.1	Direct Connect	3-21
3.6.2	Local Port (LOI).....	3-22
3.6.3	Connect to a FloBoss.....	3-22
3.6.4	Successful Logon.....	3-23
3.6.5	Disconnecting from a FloBoss	3-23
3.7	Troubleshooting Connection Errors	3-24
3.7.1	Troubleshooting ROCLINK 800 Communications	3-24
3.8	Security	3-24
3.8.1	ROCLINK 800 Security	3-25
3.8.2	Device Security	3-28

Chapter 4 – The File Menu 4-1

4.1	New Configuration.....	4-2
4.1.1	Configuration Checklist	4-2
4.1.2	Duplicating a Configuration.....	4-2
4.1.3	Creating a New Configuration File.....	4-3
4.2	Opening a Configuration File	4-6
4.2.1	Configuration Tree Menu	4-6
4.2.2	Modifying an Existing Configuration File.....	4-8
4.3	Downloading a Configuration	4-8
4.4	Saving a ROC User File	4-9
4.5	Saving a Configuration.....	4-10
4.5.1	Print Configuration	4-10
4.6	Print	4-11
4.7	Print Setup.....	4-11
4.8	Recent Files	4-12
4.9	Close	4-12
4.10	Exit	4-12

Chapter 5 – The View Menu 5-1

5.1	Directory	5-1
5.2	EFM Report.....	5-2
5.2.1	Creating the EFM File	5-2
5.2.2	Viewing EFM Reports	5-3
5.3	Calibration Reports	5-6
5.3.1	Creating a Calibration Report	5-6
5.3.2	Viewing an Existing Calibration Report.....	5-7
5.4	History, Alarm, and Event Log Reports.....	5-8
5.4.1	Viewing History Logs from a Device	5-9
5.4.2	Viewing History Logs from a File	5-11
5.4.3	Plotting History	5-12
5.4.4	Viewing Alarm Logs	5-14
5.4.5	Viewing Event Logs	5-15
5.5	Display Editor	5-16
5.6	Display Administrator	5-16
5.6.1	Viewing a Custom Display	5-16
5.6.2	Downloading a Custom Display.....	5-16
5.6.3	Deleting a Custom Display	5-18
5.7	I/O Monitor.....	5-18
5.8	Toolbar	5-19

Chapter 6 – The ROC Menu 6-1

6.1	Direct Connect	6-1
-----	----------------------	-----

6.2	Disconnect.....	6-2
6.3	Collecting ROC Data.....	6-2
6.3.1	Collecting EFM Report Data.....	6-3
6.4	Setting the Clock.....	6-5
6.4.1	Daylight Savings Time Tab.....	6-6
6.5	Security.....	6-7
6.6	Comm Ports.....	6-7
6.7	Device Memory.....	6-8
6.8	Configuring Device Information.....	6-8
6.8.1	Device Information General Tab.....	6-9
6.8.2	Device Information Points Tab.....	6-10
6.8.3	Device Information Other Information Tab.....	6-11
6.8.4	Device Information Revision Info Tab.....	6-12
6.9	CPU Information.....	6-12
6.9.1	CPU Information General Tab.....	6-12
6.9.2	CPU Information Advanced Tab.....	6-14
6.9.3	CPU Information I/O Points Tab.....	6-15
6.9.4	CPU Information Meter Points Tab.....	6-16
6.9.5	CPU Information Diagnostic Tab.....	6-17
6.10	Flags.....	6-18
6.10.1	Flags General Tab.....	6-19
6.10.2	Returning a Device to Factory Default Settings.....	6-21
6.10.3	Flags Advanced Tab.....	6-21

Chapter 7 – The Configure Menu

7-1

7.1	Configuring Input/Output (I/O).....	7-2
7.1.1	I/O Interface General Tab.....	7-3
7.1.2	I/O Interface I/O Setup Tab.....	7-4
7.1.3	I/O Interface I/O Points Tab.....	7-5
7.2	Analog Input (AI) Configuration.....	7-7
7.2.1	AI General Tab.....	7-8
7.2.2	AI Advanced Tab.....	7-9
7.2.3	AI AI Calibration Tab.....	7-11
7.2.4	AI Alarms Tab.....	7-14
7.3	Analog Output (AO) Configuration.....	7-16
7.3.1	AO General Tab.....	7-17
7.3.2	AO Advanced Tab.....	7-19
7.4	Discrete Input (DI) Configuration.....	7-21
7.4.1	DI General Tab.....	7-22
7.4.2	DI Advanced Tab.....	7-24
7.4.3	DI Alarms Tab.....	7-26
7.5	Discrete Output (DO) Configuration.....	7-27
7.5.1	DO General Tab.....	7-28
7.5.2	DO Advanced Tab.....	7-31
7.5.3	DO TDO Parameters Tab.....	7-32
7.5.4	DO Alarms Tab.....	7-34
7.6	Pulse Input (PI) Configuration.....	7-35
7.6.1	PI General Tab.....	7-36
7.6.2	PI Advanced Tab.....	7-39
7.6.3	PI Alarms Tab.....	7-41
7.7	Soft Points.....	7-43
7.8	Extended Soft Points.....	7-44
7.9	Multi-Variable Sensor (MVS) Configuration.....	7-45
7.9.1	MVS Module General Tab.....	7-46
7.9.2	MVS Module I/O Points Tab.....	7-47
7.9.3	MVS: General Tab.....	7-48
7.9.4	MVS: Advanced Tab.....	7-51

7.9.5	MVS: Calibration Tab	7-53
7.9.6	MVS: Alarms Tab	7-66
7.10	HART Points	7-68
7.10.1	HART: General Tab	7-69
7.10.2	HART: Advanced Tab	7-71
7.10.3	HART: Calibration Tab	7-72
7.10.4	HART: Device Tab	7-75
7.11	IEC 62591 Interface	7-78
7.12	Control Menu	7-78
7.12.1	Function Sequence Table (FST) Registers	7-78
7.12.2	Proportional, Integral, and Derivative (PID) Loops	7-81
7.12.3	Radio Power Control	7-93
7.12.4	DS800 Developmet Suite Software	7-96
7.13	Configuring History Points	7-96
7.13.1	History Setup Setup Tab	7-97
7.13.2	History Setup Standard History Tab	7-99
7.13.3	History Setup Extended History Tab	7-104
7.13.4	Configuring History: An Example	7-105
7.14	Opcode Table	7-106
7.14.1	Opcode Table SettingsTab	7-106
7.14.2	Opcode Table Current ValuesTab	7-107
7.15	Modbus Communications	7-108
7.15.1	Modbus Configuration	7-108
7.15.2	Modbus Configuration General Tab	7-109
7.15.3	Modbus Configuration Scale Values Tab	7-112
7.15.4	Modbus Registers	7-114
7.15.5	Modbus History Table	7-118
7.15.6	Modbus Conversion Codes	7-121
7.15.7	Modbus Master Table	7-123
7.15.8	Modbus Events and Alarms	7-125
7.16	LCD User List	7-129
7.16.1	LCD User List (Standard)	7-130
7.16.2	LCD User List – BLM	7-131
7.16.3	LCD User List – Chart	7-133
7.17	User Data	7-134

Chapter 8 – The Meter Menu

8-1

8.1	Configuring the Meter Setup	8-1
8.1.1	Meter Setup General Tab	8-3
8.1.2	Meter Setup Inputs Tab	8-7
8.1.3	Meter Setup Advanced Tab	8-10
8.1.4	Meter Setup Fluid Properties Tab	8-14
8.1.5	Meter Setup Sampler Tab	8-17
8.1.6	Meter Setup Calibration Factors Tab	8-18
8.1.7	Meter Setup Alarms Tab	8-20
8.2	Calibration Basics	8-22
8.2.1	Verifying an Input	8-24
8.2.2	Calibrating an Input	8-28
8.2.3	Zero Shift, Offset, and RTD Bias	8-34
8.3	Meter Values	8-36
8.4	Plate Change	8-37

Chapter 9 – The Utilities Menu

9-1

9.1	Update Firmware	9-2
9.1.1	Update Firmware CPU Tab	9-4
9.1.2	Additional Update Firmware Tabs	9-4

9.2	License Key Administrator	9-5
9.2.1	Distributing Software Licenses.....	9-5
9.2.2	Installing a License (Key-based).....	9-6
9.2.3	Installing a License (String-based)	9-9
9.2.4	Transferring Licenses	9-11
9.2.5	Removing a License	9-13
9.3	Converting EFM Report Files.....	9-15
9.4	User Program Administrator.....	9-19
9.4.1	Downloading a User Program.....	9-20
9.5	ROCLINK 800 Security	9-23
9.6	Analog Input Calibration Values.....	9-25
9.7	MVS Input Calibration Values	9-26
9.8	FST Editor	9-28
9.9	Custom Display Editor.....	9-28
9.10	Custom EFM Report Editor	9-28
9.10.1	Viewing Custom EFM Reports.....	9-30
9.11	Read File from Device.....	9-31
9.12	Communications Monitor	9-32
Chapter 10 – The Tools Menu		10-1
10.1	Customize	10-1
10.2	Options	10-1
Chapter 11 – The Window Menu		11-1
11.1	Cascade	11-1
11.2	Tile.....	11-2
11.3	Active View.....	11-2
Chapter 12 – The Help Menu		12-1
12.1	Help Topics	12-1
12.2	About ROCLINK 800	12-2
Appendix A – Glossary		A-1
Appendix B – The Display Editor		B-1
B.1	Creating a New Custom Display	B-2
B.2	Adding Custom Display Objects.....	B-6
B.3	Managing Custom Display Objects.....	B-19
B.4	Adding an Expression to an Object.....	B-22
B.5	Editing a Custom Display from a File	B-24
Index		I-1

[This page is intentionally left blank.]