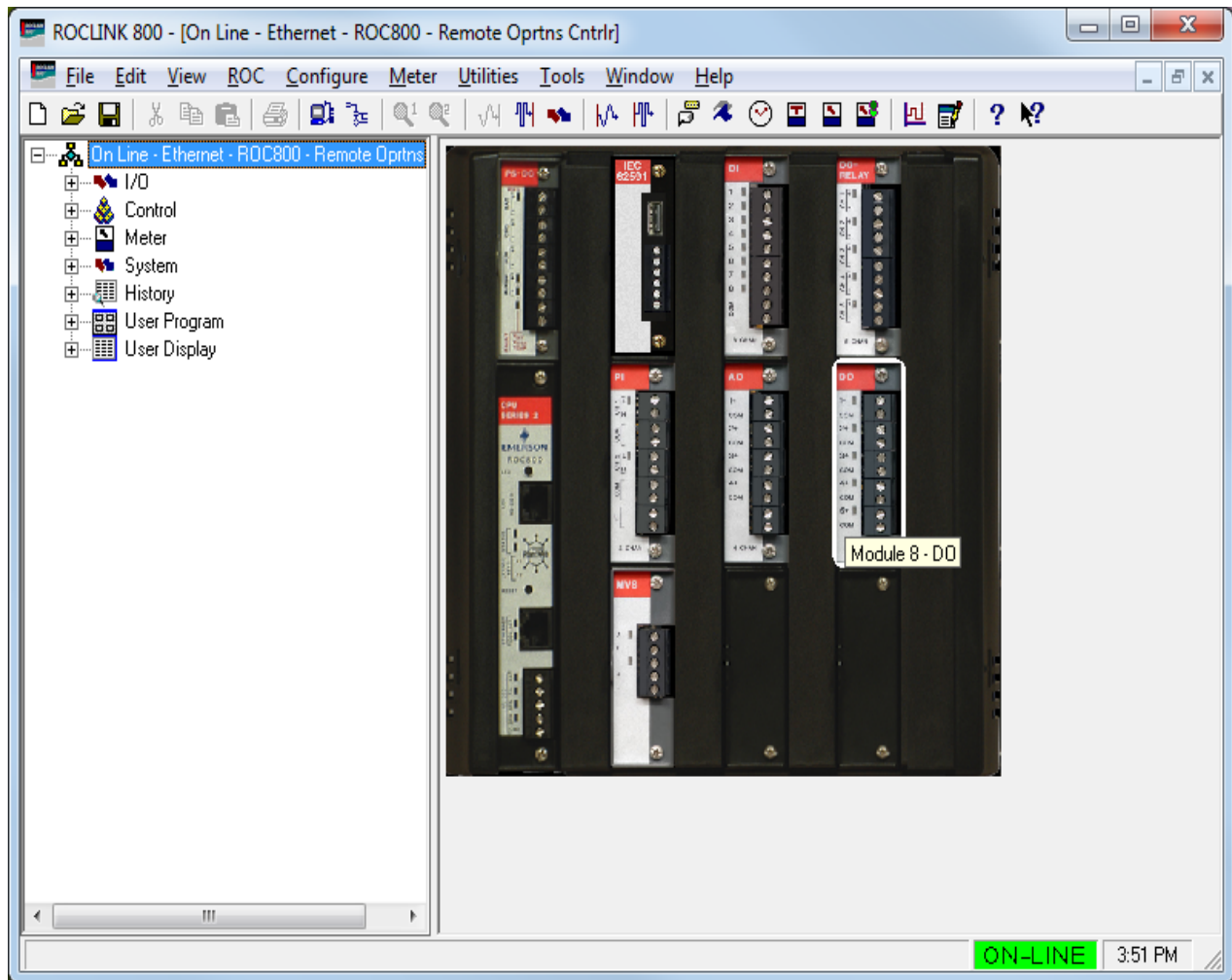


Part Number D301250X012

November 2016

ROCLINK™ 800 Configuration Software User Manual (for ROC800-Series)



Revision Tracking Sheet

November 2016

This manual may be revised periodically to incorporate new or updated information. The revision date of each page appears at the bottom of the page opposite the page number. A change in revision date to any page also changes the date of the manual that appears on the front cover. Listed below is the revision date of each page (if applicable):

Page	Revision
All Pages	November-2016
All Pages	January-2016
All Pages	March 2013
Initial release	December 2010

Contents

Chapter 1 – Introduction	1-1
1.1 ROCLINK 800 Software Basics	1-1
1.2 Computer Requirements	1-2
1.3 Contacting Technical Support	1-2
1.4 Software Installation	1-2
1.4.1 Installing ROCLINK 800 under Windows 8 and Windows 7	1-3
1.4.2 Un-installing ROCLINK 800	1-16
1.5 Starting ROCLINK 800 Software.....	1-16
1.5.1 Logging On.....	1-16
1.6 User Interface Basics	1-17
1.6.1 Device Dynamic Interface	1-19
1.6.2 Standard Buttons	1-20
1.6.3 Toolbar Buttons.....	1-21
1.6.4 Configuration Tree Menu	1-23
1.6.5 Keystrokes	1-23
1.6.6 Help System.....	1-24
1.6.7 Basic Navigation	1-25
1.6.8 Text Boxes	1-27
Chapter 2 – Device Directory and Device Root	2-1
2.1 Device Directory	2-1
2.1.1 Communication Parameters Setup Screen	2-2
2.2 Device Root.....	2-4
2.2.1 Backing Up Configurations	2-4
2.2.2 Adding a Group	2-5
2.2.3 Deleting a Group	2-5
2.2.4 Adding a Device	2-5
2.2.5 Deleting a Device	2-6
2.2.6 Deleting All Devices	2-6
2.2.7 Renaming a Group or Device	2-7
Chapter 3 – Communications and Security	3-1
3.1 Communications.....	3-1
3.2 ROCLINK 800 Communications	3-2
3.2.1 ROCLINK 800 Communications General Tab	3-2
3.2.2 ROCLINK 800 Communications Advanced tab	3-5
3.3 Communication Ports	3-7
3.4 Configuring Communications Ports.....	3-7
3.4.1 Configuring TCP/IP Communications on the Ethernet Port.....	3-8
3.4.2 Comm Ports General Tab	3-10
3.4.3 Comm Ports Modem Tab.....	3-12
3.4.4 Comm Ports SRBX Tab	3-13
3.4.5 Comm Ports Store & Forward Tab	3-15
3.4.6 Comm Ports Diagnostics Tab	3-16
3.5 Connecting to a ROC	3-17
3.5.1 Direct Connect	3-17
3.5.2 Local Port (LOI).....	3-18
3.5.3 Connect to a ROC.....	3-18
3.5.4 Successful Login	3-18

3.5.5	Disconnecting from a ROC	3-19
3.6	Troubleshooting Connection Errors	3-19
3.6.1	Troubleshooting ROCLINK 800 Communications	3-20
3.6.2	Troubleshooting TCP/IP Connections	3-20
3.7	Security	3-21
3.7.1	ROCLINK 800 Security	3-21
3.7.2	Device Security	3-25

Chapter 4 – The File Menu **4-1**

4.1	New Configuration	4-2
4.1.1	Configuration Checklist	4-2
4.1.2	Duplicating a Configuration	4-2
4.1.3	Creating a New Configuration File	4-3
4.2	Opening a Configuration File	4-5
4.2.1	Configuration Tree Menu	4-6
4.2.2	Modifying an Existing Configuration File	4-7
4.2.3	Adding Modules to an Existing Configuration File (ROC800-Series)	4-8
4.3	Downloading a Configuration	4-10
4.4	Saving a ROC User File	4-12
4.5	Saving a Configuration	4-12
4.6	Printing a Configuration	4-12
4.7	Print	4-14
4.8	Print Setup	4-14
4.9	Recent Files	4-15
4.10	Close	4-15
4.11	Exit	4-15

Chapter 5 – The View Menu **5-1**

5.1	Directory	5-2
5.2	EFM Reports	5-2
5.2.1	Creating the EFM File	5-2
5.2.2	Viewing EFM Reports	5-2
5.3	Calibration Reports	5-7
5.3.1	Viewing a Calibration Report	5-7
5.4	History Logs	5-8
5.4.1	Viewing Logs from a Device	5-10
5.4.2	Viewing History Logs from a File	5-11
5.4.3	Plotting History	5-12
5.4.4	Managing Plotted History	5-13
5.5	Alarm and Events Logs	5-14
5.5.1	Viewing Alarm Logs	5-14
5.5.2	Viewing Event Logs	5-15
5.6	Display Editor	5-15
5.7	Display Administrator	5-16
5.7.1	Viewing a Custom Display	5-16
5.7.2	Downloading a Custom Display	5-16
5.7.3	Deleting a Custom Display	5-17
5.8	I/O Monitor	5-18
5.9	Toolbar	5-20
5.10	Refresh User Program Tree	5-20

Chapter 6 – The ROC Menu	6-1
6.1 Direct Connect.....	6-1
6.2 Connect/Disconnect	6-2
6.3 Collect ROC Data.....	6-2
6.3.1 Collecting EFM Report Data	6-5
6.4 Clock	6-7
6.4.1 Daylight Savings Time Tab	6-8
6.5 ROC Security	6-9
6.6 ROC Comm Ports	6-9
6.7 Configuring Device Information.....	6-9
6.7.1 General Tab	6-9
6.7.2 Internet Tab (ROC800-Series).....	6-11
6.7.3 Points Tab	6-14
6.7.4 Other Information Tab.....	6-15
6.7.5 System Configuration Tab	6-17
6.7.6 Keypad Display Tab (ROC800-Series).....	6-17
6.7.7 Expanded I/O Tab (ROC827)	6-19
6.7.8 Module Information Tab	6-20
6.8 Flags.....	6-22
6.8.1 Flags Tab	6-22
6.8.2 Returning the Device to Factory Default Settings.....	6-24
6.8.3 Flags Advanced Tab	6-24
Chapter 7 – The Configure Menu	7-1
7.1 Configuring I/O	7-2
7.1.1 Analog Input (AI) Configuration.....	7-2
7.1.2 Analog Output (AO) Configuration	7-17
7.1.3 Discrete Input (DI) Configuration	7-21
7.1.4 Discrete Output (DO) Configuration.....	7-26
7.1.5 Discrete Output Relay (DOR) Configuration	7-34
7.1.6 Pulse Input (PI) Configuration.....	7-35
7.1.7 Thermocouple (TC) Input Configuration	7-42
7.1.8 Resistance Temperature Detector (RTD) Input Configuration	7-48
7.1.9 System Analog Input (AI) Configuration	7-61
7.1.10 Soft Points	7-66
7.1.11 Multi-Variable Sensor (MVS) Configuration	7-67
7.1.12 HART Input Configuration.....	7-86
7.1.13 Advanced Pulse Module (APM) Configuration	7-99
7.1.14 Alternating Current I/O (ACIO) Configuration	7-118
7.1.15 Virtual Discrete Output (VDO) Configuration	7-130
7.1.16 IEC62591 Module	7-138
7.2 Control Menu	7-149
7.2.1 FST Registers	7-150
7.2.2 Proportional, Integral, and Derivative (PID)	7-153
7.2.3 Radio Power Control.....	7-164
7.2.4 Sampler/Odorizer	7-167
7.2.5 DS800 Development Suite Software	7-169
7.3 History Segment Configuration	7-171
7.4 History Point Configuration	7-175
7.4.1 History	7-178
7.4.2 History Wizard.....	7-182
7.4.3 undefining a Gas History Point.....	7-183
7.5 Opcode Table	7-183
7.6 Modbus Communications.....	7-184
7.6.1 Modbus Configuration.....	7-185
7.6.2 Modbus Conversion Codes.....	7-207

7.6.3	Modbus Events and Alarms.....	7-214
-------	-------------------------------	-------

Chapter 8 – The Meter Menu **8-1**

8.1	Setup.....	8-1
8.1.1	Station Configuration	8-2
8.1.2	Meter Setup Configuration	8-13
8.2	Meter Calibration Basics	8-26
8.2.1	Verifying an Input.....	8-28
8.2.2	Calibrating an Input Example.....	8-32
8.2.3	Zero Shift/Offset/RTD Bias	8-39
8.3	Meter Values	8-44
8.3.1	Meter Values: Values Tab	8-44
8.3.2	Meter Values: Factors Tab	8-45
8.4	Plate Change	8-46

Chapter 9 – The Utilities Menu **9-1**

9.1	Update Firmware.....	9-2
9.1.1	CPU Firmware Tab	9-2
9.1.2	Additional Update Firmware Tabs	9-5
9.2	License Key Administrator	9-6
9.2.1	Managing Licenses	9-7
9.3	Converting EFM Report Files.....	9-9
9.3.1	Flow-Cal (.CFX) Conversions and PGAS Definitions	9-12
9.3.2	PGAS Conversions	9-12
9.4	User Program Administrator.....	9-21
9.4.1	Downloading a User Program.....	9-24
9.4.2	MPU Loading Threshold	9-24
9.5	ROCLINK 800 Security	9-24
9.5.1	Defining Access	9-25
9.6	RTD Input Calibration Values.....	9-29
9.7	Analog Input (AI) Calibration Values.....	9-30
9.8	MVS Input Calibration Values	9-32
9.9	FST Editor	9-33
9.10	Keypad Display Editor.....	9-33
9.10.1	Creating a Keypad Display File	9-34
9.10.2	Editing a Keypad Display File	9-36
9.11	Custom Display Editor.....	9-40
9.12	Custom EFM Report Editor.....	9-41
9.12.1	Viewing Custom EFM Reports.....	9-42
9.13	Read File from Device.....	9-45
9.14	Communications Monitor	9-46

Chapter 10 – The Tools Menu **10-1**

10.1	Options	10-1
------	---------------	------

Chapter 11 – The Windows Menu **11-1**

11.1	Cascade	11-1
11.2	Tile.....	11-2
11.3	Active View.....	11-3

Chapter 12 – The Help Menu **12-1**

- 12.1 Help Topics 12-1
- 12.2 About ROCLINK 800 12-2

Appendix A – Glossary **A-1**

Appendix B – The Display Editor **B-1**

- B.1 Creating a New Custom Display B-2
- B.2 Adding Custom Display Objects..... B-6
- B.3 Managing Custom Display Objects B-19
- B.4 Adding an Expression to an Object..... B-22
- B.5 Editing a Custom Display from a File B-24

Index **I-1**

[This page is intentionally left blank.]