

Field Tools

Field Tools is a Microsoft® Windows®-based configuration software suite designed to perform remote terminal unit (RTU), flow computer, and HART® device configuration and maintenance in the field. Field Tools provides technicians and engineers with a single software toolkit that performs all necessary configuration and diagnostics.

This enhanced tool kit can launch the following configuration tools for Emerson Flow Computers and RTUs:

- FBxConnect
- ROCLINK 800
- TechView

With the above, Field Tools provides support for:

- New FB1000 and FB2000 Series Flow Computers
- ROC RTUs
- FloBoss Flow Computers
- ControlWave® Flow Computers and RTUs

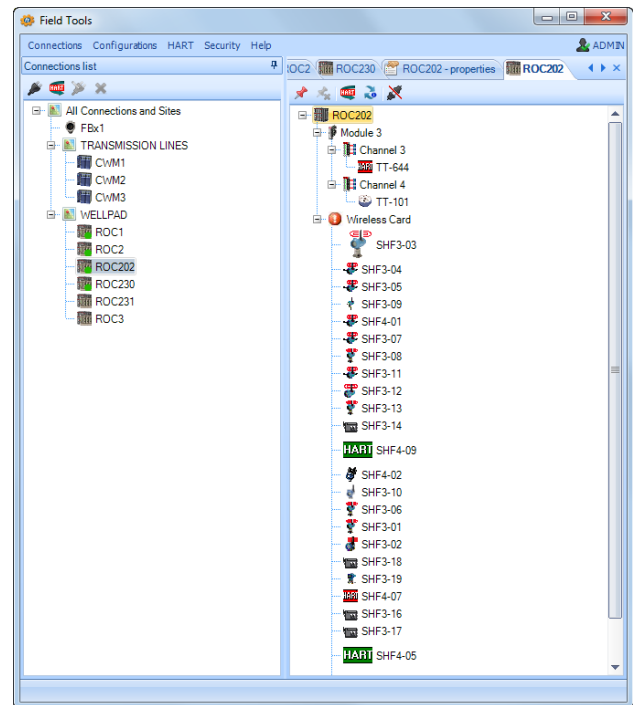
Additionally, Field Tools is a fully-functional HART communicator that supports configuration, troubleshooting, and maintenance of all wired HART and WirelessHART® field devices. The installation and set-up time can now be streamlined by leveraging a single tool suite across RTUs flow computers and field devices.

Key Benefits

- **Ease of Use:** incorporates an intuitive graphical user interface
- **Cost Effective:** eliminates need for expensive handheld configurators, HART multiplexers, or gateways
- **Faster Configuration, Commissioning, and Startup Times:** performs device test and calibration quickly and efficiently without the need for any Modbus mapping
- **Reduced Maintenance Expenditures:** provides remote troubleshooting by monitoring status and diagnostic information
- **Increased User Safety:** eliminates the need to climb tanks or go to hazardous areas to establish a physical device connection

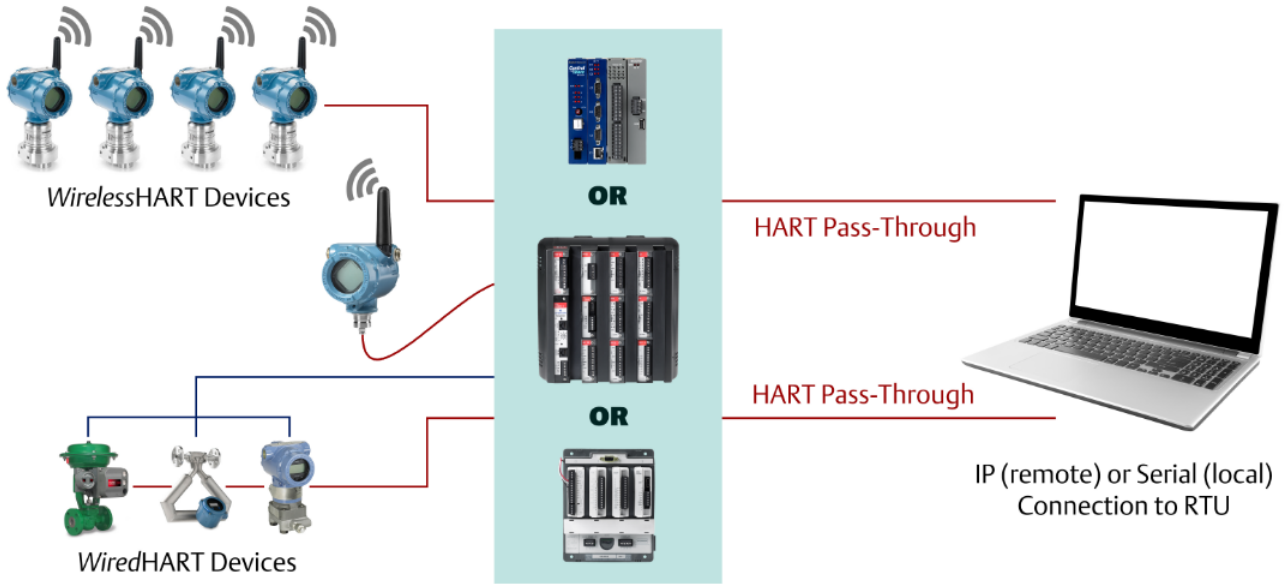
Features

- Launches FBxConnect, ROCLINK 800, and TechView configuration tools
- One tool allows for simple site connection, calibration etc. – for all Emerson’s field flow computers and RTUs
- Performs complete HART device configuration and diagnostics using your PC
- Views and edits HART device status and variables
- Supports HART and WirelessHART protocols
- Support for the AMS Wireless SNAP-ON
- Supports Add Device functionality to load additional HART Device Descriptions (DDs)
- Connects via HART Modem (USB) or RTU / Flow Computer (serially or IP)



Field Tools

Emerson RTU integrated with IEC 62591 (WirelessHART®) Interface



Field Tools Specifications and Requirements

Software Operating Environment

Operating System

32 or 64-bit, Microsoft® Windows® 7 SP1, Windows 8.1, and Windows 10

Note: Operating system compatibility is unique for each configuration tool launched by Field Tools.

	Windows 7	Windows 8.1	Windows 10
FBxConnect	YES	YES	YES
ROCLINK	YES	NO	YES
TechView	YES	NO	YES
AMS Device Configurator	YES	NO	NO
AMS Wireless Snap-on	YES	NO	NO

Hardware Operating Requirements

CPU Intel® Core™ 2 Duo T7100 or similar specification Intel CPU (minimum)

Hard Disk Space 8 GB or more

RAM 2 GB or more

Display 1366 x 768 or better resolution (OS Compatible)

DVD-ROM Drive Dual –layer DVDs compatible (OS compatible)

Network Ports USB port MACTek® Viator® USB HART Interface (option)
Ethernet port

Supported Devices per RTU using HART Communications

FloBoss™ 107 Up to 5 wired multidrop devices per HART channel, or up to 20 *WirelessHART*® devices per RTU at a burst rate of 2 seconds.

ROC800-Series Up to 5 wired multidrop devices per HART channel, or up to 60 *WirelessHART* devices per RTU at a burst rate of 4 seconds.

ControlWave® Micro Up to 5 wired multidrop devices per HART channel, or up to 100 *WirelessHART* devices per RTU at a burst rate of 8 seconds.

Compatibility¹

ROCLINK™ Configuration Software Version 2.40 or newer

ROC800-Series Firmware version 3.60 or newer

ROC800L Firmware version 1.40 or newer

FloBoss 107 Firmware version 1.70 or newer

ControlWave Micro Firmware version 5.71 or newer

IEC62591 Module Firmware version 1.10 or newer

HART2 Module Firmware version 1.15 or newer

Distributed RTU™ Network Bundle Firmware version 1.00 or newer

¹: To configure HART2 and IEC62591 modules, you must install ROCLINK 800 or TechView.

Note: Field Tools cannot reside on the same PC as OpenEnterprise (OE), OpenBSI (OBSI) Network Edition, or ObjectServer.

For customer service and technical support, visit www.EmersonProcess.com/Remote/Support.

**Global Headquarters,
North America, and Latin America:**

Emerson Automation Solutions
Remote Automation Solutions
6005 Rogerdale Road
Houston, TX 77072 U.S.A.
T +1 281 879 2699 | F +1 281 988 4445
www.EmersonProcess.com/Remote

Europe:

Emerson Automation Solutions
Remote Automation Solutions
Unit 8, Waterfront Business Park
Dudley Road, Brierley Hill
Dudley UK DY5 1LX
T +44 1384 487200 | F +44 1384 487258

Middle East/Africa:

Emerson Automation Solutions
Remote Automation Solutions
Emerson FZE
P.O. Box 17033
Jebel Ali Free Zone – South 2
Dubai U.A.E.
T +971 4 8118100 | F +971 4 8865465

Asia-Pacific:

Emerson Automation Solutions
Remote Automation Solutions
1 Pandan Crescent
Singapore 128461
T +65 6777 8211 | F +65 6777 0947

© 2014–2017 Remote Automation Solutions, a business unit of Emerson Automation Solutions. All rights reserved.

This publication is for informational purposes only. While every effort has been made to ensure accuracy, this publication shall not be read to include any warranty or guarantee, express or implied, including as regards the products or services described or their use or applicability. Remote Automation Solutions (RAS) reserves the right to modify or improve the designs or specifications of its products at any time without notice. All sales are governed by RAS terms and conditions which are available upon request. RAS accepts no responsibility for proper selection, use or maintenance of any product, which remains solely with the purchaser and/or end-user.