

**Reference Guide**

D301479X412

April 2012

---

# **OpenEnterprise Archive File Manager Reference Guide (V2.83)**

Remote Automation Solutions

Website: [www.EmersonProcess.com/Remote](http://www.EmersonProcess.com/Remote)



## Contents

<b>1</b>	<b>Archive File Manager .....</b>	<b>1</b>
1.1	Overview .....	1
1.1.1	Dependencies.....	1
1.2	Command Line Parameters .....	1
1.3	How the Archive File Manager Works.....	1
1.3.1	Special Directories.....	2
1.3.1.1	Archive Online Directory .....	2
1.3.1.2	Archive Offline Directory .....	2
1.3.2	When to Act .....	2
1.3.2.1	Bringing Files Online.....	2
1.3.2.2	Taking Files Offline .....	2
1.3.3	Backing up Archives .....	2
1.3.3.1	Creating Backup Regimes .....	2
1.4	Interface .....	3
1.4.1	The Archive File Manager Interface .....	3
1.4.2	File Menu .....	3
1.4.3	View Menu .....	3
1.4.3.1	Toolbar .....	3
1.4.3.2	Status Bar .....	4
1.4.3.3	Diagnostics.....	4
1.4.3.4	Options.....	4
1.4.3.4.1	Log File .....	4
1.4.3.4.2	Keep For .....	5
1.4.4	Connection Status .....	5
1.4.5	Help .....	5
<b>2</b>	<b>Index .....</b>	<b>6</b>

# 1 Archive File Manager

## 1.1 Overview

In conjunction with the Scheduler and the Historian and Archive File configuration tools, the Archive File Manager (AFM) is responsible for the control of:-

- Bringing archive files on and offline
- Moving files to and from the on and offline directories
- Creating backup copies of the archive files in the specified Backup directory

### 1.1.1 Dependencies

The Archive File Manager is informed by the Scheduler regarding all timing information such as :-

- When files should be brought offline
- When backup copies should be made, if timed backup with a diary is specified

It is therefore important that where OpenEnterprise Archive File Management is required, the Session Manager is configured to run both the Archive File Manager and the Scheduler within the Session. Please refer to Session Manager Help for further information on setting up OpenEnterprise Sessions.

## 1.2 Command Line Parameters

The Archive File Manager can be launched from the Run command, or by the Session Manager as part of an OpenEnterprise Session. In either case, the command line parameter needs to be used. If the Session Manager is used to start the Archive File Manager, it will need to have a Task configured for it with a CommandLine value attached to the key. See the Session Manager help for more information on configuring Session tasks. The Command Line for the Archive File Manager is: -

```
OEArchfileManager <dataservice>
```

If the <dataservice> is not specified it defaults to rtrdb1. When operational on a redundant OpenEnterprise Server system it is recommended that Archive File Manager is run on both the Standby and the Master and that the dataservice is specified as *rtrdb1[active,standby]*. The [active,standby] argument ensures that the Archive File Manager will connect to the local database on both the Master and Standby Servers.

## 1.3 How the Archive File Manager Works

The Archive File Manager (AFM) knows how to bring archive files online, take archives offline, copy and move archive files and make backup copies of archive files

To do these tasks according to the wishes of the user, it needs to know the following three things. Click on the numbered links below to find out more:-

1. Where to keep the archives
2. When to act on the archives
3. How to back up the archives

For further help on the how the Archive File Manager works with archive files see Archive File Management and Archive File Configuration Help.

### **1.3.1 Special Directories**

By default, archives are stored in the same directory as the designated Data directory of the database. Alternative directories can be configured for each historical logging group by using the Historian configuration tool.

You do not need to know about the database schema to create Online and Offline directories for your archive files, but for your information, the AFM knows if it is to use different online and offline directories from the following tables:-

#### **1.3.1.1 Archive Online Directory**

This is specified in the 'archdirectory' attribute of the oelogdata table.

#### **1.3.1.2 Archive Offline Directory**

This is specified in the 'archofflinedirectory' attribute of the oelogdataextension table.

### **1.3.2 When to Act**

The AFM is told when to act on archives when certain attributes within the ArchiveCatalogue table are set to True.

#### **1.3.2.1 Bringing Files Online**

The AFM knows when to bring files online manually when the 'BringOnline' attribute of the ArchiveCatalogue table for the archive is set to True. This is normally done by selecting an offline archive and bringing it online using the Archive File configuration tool.

Archives created automatically by the Historian are brought online automatically by the AFM up to the number set by the 'Archivenumber' attribute of the OELogData table.

#### **1.3.2.2 Taking Files Offline**

The AFM will take files offline when the 'TakeOffline' attribute of the ArchiveCatalogue table for the archive is set to True. This is done manually by selecting the online file in the Archive File configuration tool and selecting the **[Take Offline]** button.

It is done by the Scheduler if the file was brought online and a time was set for taking the file offline again.

It is done automatically by the AFM if the number set in the 'ArchiveNumber' for automatically created archives is exceeded. The AFM takes the oldest automatically created archive offline.

### **1.3.3 Backing up Archives**

The AFM knows when to backup Archives when the 'DoBackup' attribute of the ArchiveBackupSet table is set to True.

#### **1.3.3.1 Creating Backup Regimes**

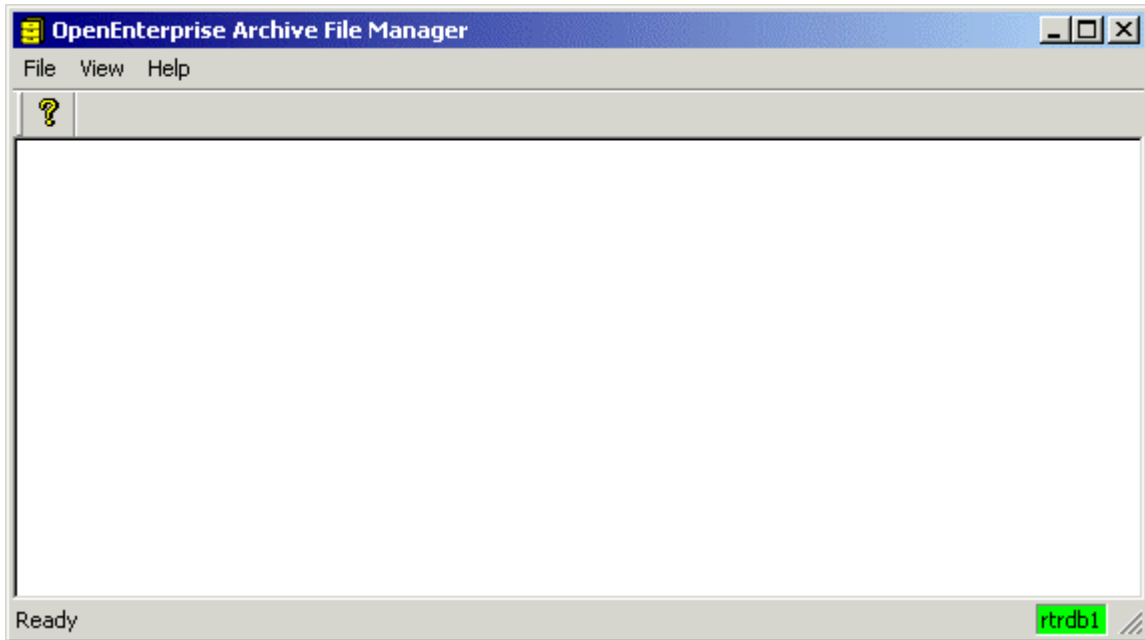
Backup regimes are created using the 'Backups' tab of the Archive File configuration tool. It makes the necessary entries in the ArchiveBackupSet and ArchiveBackupItem tables. This tells the AFM where the archive file is to be found, and the backup directory to use.

It also creates a Diary for the Backup set, based on the configuration made by the user. The scheduler then sets the 'DoBackup' attribute, when the backup time is due.

## 1.4 Interface

### 1.4.1 The Archive File Manager Interface

When it is run, the Archive File Manager has a simple user interface that allows some of its settings to be configured through menus, and indicates its connection status in the status bar.

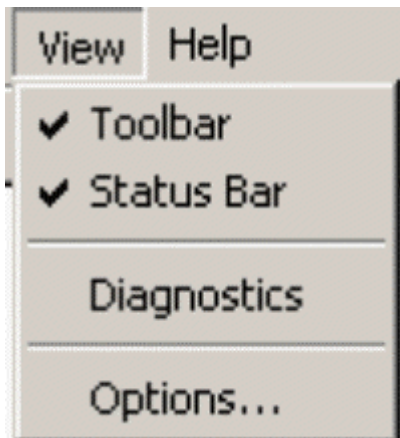


### 1.4.2 File Menu

The only option is 'Exit'.

### 1.4.3 View Menu

The View Menu enables the user to change certain aspects of the Archive File Manager interface, and view diagnostic details.



#### 1.4.3.1 Toolbar

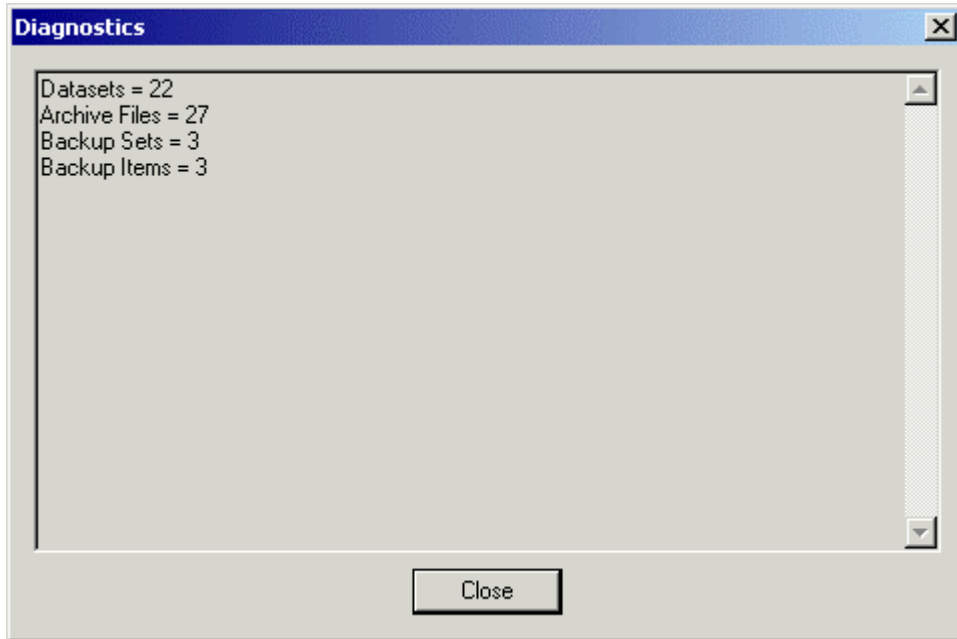
Toggles the toolbar on and off.

**1.4.3.2 Status Bar**

Toggles the status bar on and off.

**1.4.3.3 Diagnostics**

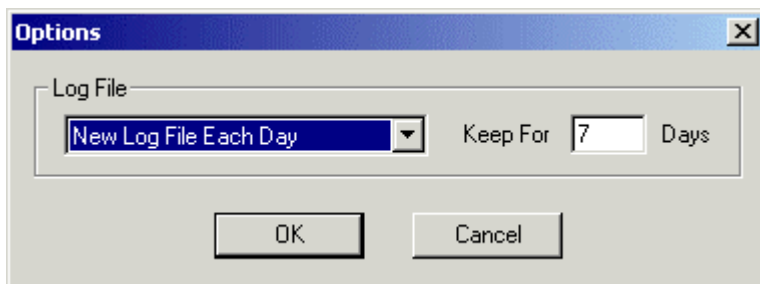
Opens this diagnostics page displaying statistical information on datasets, archive files and archive backups.



**1.4.3.4 Options**

The Archive File Manager writes a log file of all the database transactions it initiates. This can be a helpful diagnostic tool.

It is written to the same directory that the Archive File Manager is started from, which by default is 'C:\Program Files\Bristol\OpenEnterprise\bin'. Click the hotspots\* for information on each feature of this dialog.



**1.4.3.4.1 Log File**

The list provides options for saving the Archive File Manager's log file. They are:-

No Log File

No log file will be created. The Keep For Days field is disabled if this option is chosen.

Single Log File

A single log file will be created. The Keep For Days field becomes disabled if this option is chosen.

The file will just keep on being added to. It is the job of the user to manage the file by occasionally either deleting it or moving the file to another location when it gets too large, so that a new file can be started.

#### New Log File Each Day

A new log file is created for each day. The Keep For Days field is enabled for this option and the user can specify how many days to keep the log files for before they are deleted to begin a new set. This is the recommended option.

The log file is named differently according to the mode chosen for its creation on this dialog. If a single log file is the mode requested, then the single file is named OEArchiveFileManager.txt. If the New Log File Each Day mode is selected, then the files are named OEArchiveFileManager yyyy-mm-dd.txt, where yyyy = the current year, mm = the current month and dd = today's date.

### Options Dialog

#### 1.4.3.4.2 Keep For

Type the number of days which the Archive File Manager will keep saving its log file. After that period, the log files will be deleted and a new group of daily log files will be created.

#### 1.4.4 Connection Status

Connectivity to the database is displayed through the background color of the database icon on the right of the Status bar.



A green background indicates the Archive File Manager is connected to the database. Red indicates that no connection has occurred.

Archive File Manager attempts to connect by default to the local database (e.g. rtrdb1), unless it is supplied with another option through a Command Line Parameter.

#### 1.4.5 Help

Provides access to this Help file and also the OpenEnterprise About box. This provides information about the version and build of OpenEnterprise that is running on the Server along with contact information.

## **2 Index**

### **C**

*Command Line Parameters* ..... 3

*Connection Status* ..... 7

### **D**

*Diagnostics* ..... 6

### **H**

*Help* ..... 7

### **I**

*Interface* ..... 5

### **K**

*Keep For* ..... 7

### **L**

*Log File* ..... 6

### **O**

*Options Dialog* ..... 6

*Overview* ..... 3

### **S**

*Status Bar* ..... 5

### **V**

*View Menu* ..... 5



## Reference Guide

D301479X412

April 2012

---

### DISCLAIMER

Bristol, Inc., Bristol Babcock Ltd, Bristol Canada, BBI SA de CV and the Flow Computer Division, are wholly owned subsidiaries of Emerson Electric Co. doing business as Remote Automation Solutions ("RAS"), a division of Emerson Process Management. ROC, FloBoss, ROCLINK, Bristol, Bristol Babcock, ControlWave, TeleFlow and Helicoid are trademarks of RAS. AMS, PlantWeb and the PlantWeb logo are marks of Emerson Electric Co. The Emerson logo is a trademark and service mark of the Emerson Electric Co. All other marks are property of their respective owners.

The contents of this publication are presented for informational purposes only. While every effort has been made to ensure informational accuracy, they are not to be construed as warranties or guarantees, express or implied, regarding the products or services described herein or their use or applicability. RAS reserves the right to modify or improve the designs or specifications of such products at any time without notice. All sales are governed by RAS' terms and conditions which are available upon request. RAS does not assume responsibility for the selection, use or maintenance of any product. Responsibility for proper selection, use and maintenance of any RAS product remains solely with the purchaser and end-user.

Engineered and supported by:

Remote Automation Solutions,

Blackpole Road, Worcester, WR3 8YB, UK

Registered office: Meridian East, Leicester, LE19 1UX

Registered in England and Wales, Registration No. 00671801

VAT Reg No. GB 705 353 652

**Emerson Process Management**  
**Remote Automation Solutions**  
1100 Buckingham St  
Watertown, CT 06795  
T 1 (860) 945 2200  
F 1 (860) 945 2278  
[www.EmersonProcess.com/Remote](http://www.EmersonProcess.com/Remote)  
[binfo@EmersonProcess.com](mailto:binfo@EmersonProcess.com)

**Emerson Process Management**  
**Remote Automation Solutions**  
Blackpole Road  
Worcester, WR3 8YB  
T 44 (0) 1905 856848  
F 44 (0) 1905 856930  
[www.EmersonProcess.com/Remote](http://www.EmersonProcess.com/Remote)  
[oedsupport@EmersonProcess.com](mailto:oedsupport@EmersonProcess.com)

