

ROCLINK™ Configuration Software for DOS

ROCLINK Configuration Software for DOS is used to configure and monitor ROC300-Series Remote Operation Controllers (with a FlashPAC or ROCPAC), FloBoss™ 407 Flow Managers, and FloBoss 500-Series Flow Managers, including all Canadian custody transfer versions. Some of the many functions provided are: configuring I/O points, AGA flow calculations, and the history database; calibrating meter inputs (using up to five calibration points); and retrieving log data.

The software requires at least 450 KB of RAM and runs on a personal computer (minimum of a 486DX processor) using DOS 5.0 or higher. It can also run as a DOS application with Microsoft® Windows® 3.1, 95, 98, or NT. The computer needs a high-density 3.5-inch floppy drive, 640 KB of base RAM, and 10 MB of free hard drive space.

ROCLINK software for DOS is designed for ease of use. Pull-down menus simplify accessing the functions provided by the software, and dialog boxes help to direct selections and data entry. Actions can be performed either by using the keyboard or by using a pointing device, such as a mouse.

The User Interface

ROCLINK software for DOS employs a character-based graphical user interface, similar in many ways to the Windows operating system. Upon logging on to the ROCLINK software, you see the available functions presented in drop-down menus (see Figure 1).

When you select an item from a menu, a screen appears that provides the requested information in an easy-to-read format and lets you enter the applicable configuration data.

The menu structure lists choices from which you can select the desired function. Some items, when selected, bring up another menu, which lists additional functions. Once a function is selected, the associated screen or dialog box displays.

Help screens can be accessed either from the Help menu or in a context-sensitive fashion from within the menus and screens. This feature makes it easy to obtain on-line information for any ROCLINK topic.

A typical screen (see Figure 1) displays parameters and their associated values or selected options. Values are contained in data fields, many of which can be edited. Some parameters have options listed below them, with the selected option marked. Pushbuttons bring up dialog boxes for further configuration details, or perform a desired action, such as the Save pushbutton shown in Figure 1.

The pushbuttons can be activated either by clicking with a mouse or by pressing a key (the Enter key or a function key). A status line at the bottom of the screen contains pertinent information about the option or parameter currently highlighted.

Dialog boxes are areas that “pop up” on the screen, allowing further selections to be made or values to be entered. They can also display to provide messages and more detailed information.

Figure 2 shows the overall menu structure for the software functions. Note that some functions may not be available, depending on the user’s access level and the way that the FloBoss or ROC is equipped.

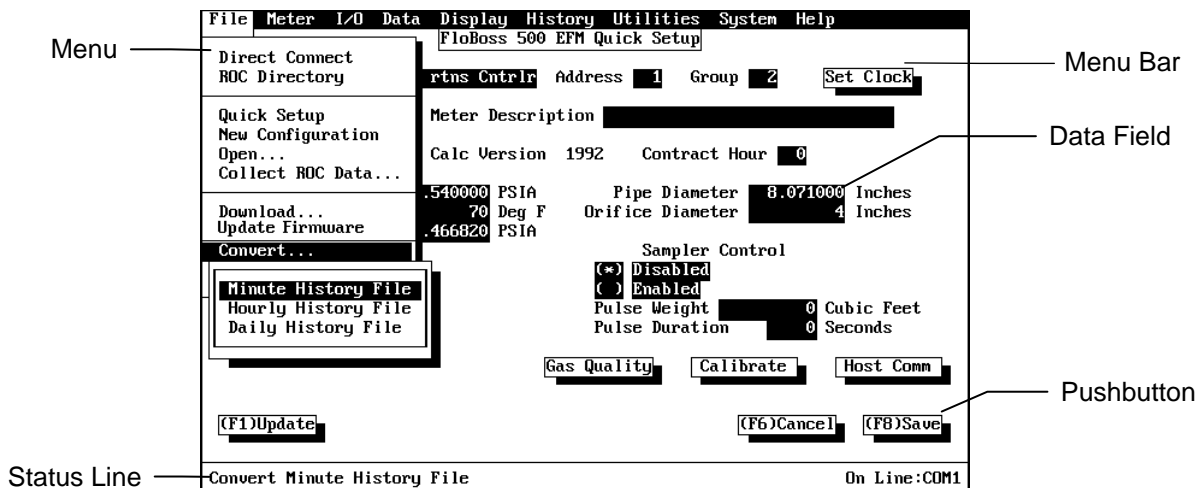


Figure 1. Sample Configuration Screen

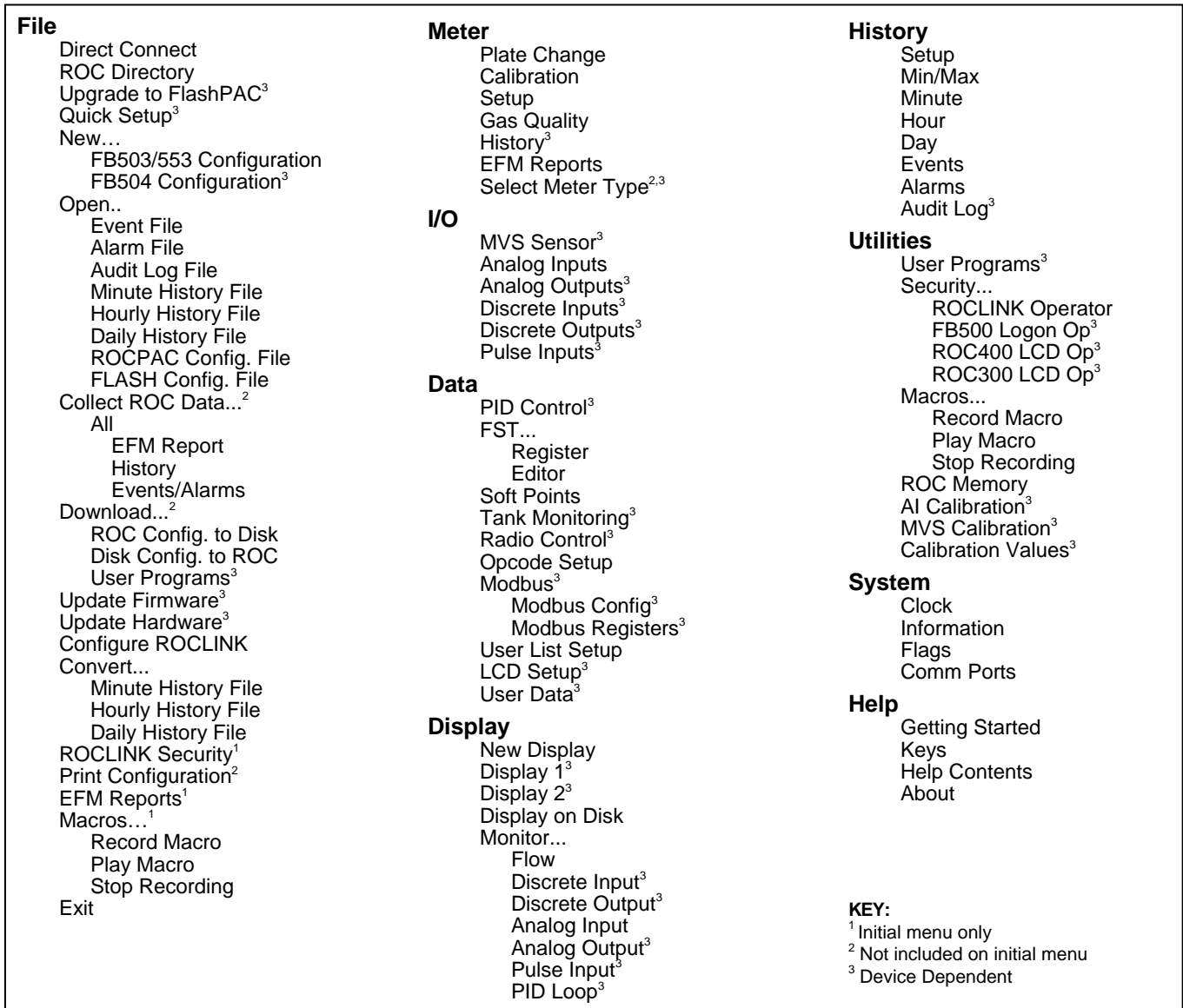


Figure 2. Menu Tree for the ROCLINK Software

Customizing Features

You can build custom displays for the FloBoss or ROC that combine both graphic and dynamic data elements. Using ROCLINK software for DOS, the displays can then be used to monitor the operation of a FloBoss or ROC in its application, either locally or remotely.

ROCLINK can record custom sequences called macros, which can “play back” dozens of keystrokes at a time.

Security

ROCLINK software for DOS provides multiple levels of security for controlling access to ROCLINK functions, as well as the FloBoss/ROC database. Making changes to passwords or to the access level for personnel is accomplished through the Security menu, which is available only to authorized personnel.

Bristol, Inc., Bristol Babcock Ltd, Bristol Canada, BBI SA de CV and the Flow Computer Division, are wholly owned subsidiaries of Emerson Electric Co. doing business as Remote Automation Solutions (“RAS”), a division of Emerson Process Management. FloBoss, ROCLINK, Bristol, Bristol Babcock, ControlWave, TeleFlow and Helicoid are trademarks of RAS. AMS, PlantWeb and the PlantWeb logo are marks of Emerson Electric Co. The Emerson logo is a trademark and service mark of the Emerson Electric Co. All other marks are property of their respective owners.

The contents of this publication are presented for informational purposes only. While every effort has been made to ensure informational accuracy, they are not to be construed as warranties or guarantees, express or implied, regarding the products or services described herein or their use or applicability. RAS reserves the right to modify or improve the designs or specifications of such products at any time without notice. All sales are governed by RAS’ terms and conditions which are available upon request. RAS does not assume responsibility for the selection, use or maintenance of any product. Responsibility for proper selection, use and maintenance of any RAS product remains solely with the purchaser and end-user.

Emerson Process Management
Remote Automation Solutions
 Marshalltown, IA 50158 U.S.A.
 Houston, TX 77041 U.S.A
 Pickering, North Yorkshire UK Y018 7JA

