

Configuring and Performing Partial Stroke Testing via Loop Current Initiation with the Fisher® FIELDVUE™ DVC6200 SIS Digital Valve Controller

The DVC6200 SIS is capable of performing loop current initiated Partial Stroke Testing. This is useful in cases where you want to initiate Partial Stroke Testing (PST) of your FIELDVUE DVC6200 SIS digital valve controller via analog current. This instruction manual supplement is intended to guide you in the configuration and use of this functionality.

Use these procedures in conjunction with the [Safety manual \(D103601X012\)](#) and [Instruction Manual \(D103557X012\)](#). In addition, exercise good engineering practices and abide by specific plant safety guidelines for safe operation.

⚠ WARNING

This document is not intended to be used as a stand-alone document. It *must* be used in conjunction with the following documents:

[Safety Manual for FIELDVUE DVC6200 SIS Digital Valve Controller and Position Monitor \(D103601X012\)](#)

[Fisher FIELDVUE DVC6200 SIS Instruction Manual \(D103557X012\)](#)

Failure to use this instruction manual supplement in conjunction with the above referenced manuals could result in personal injury or property damage. If you have any questions regarding these instructions or need assistance in obtaining any of these documents, contact your [Emerson Process Management sale office](#).



Click or scan code to access sales office information

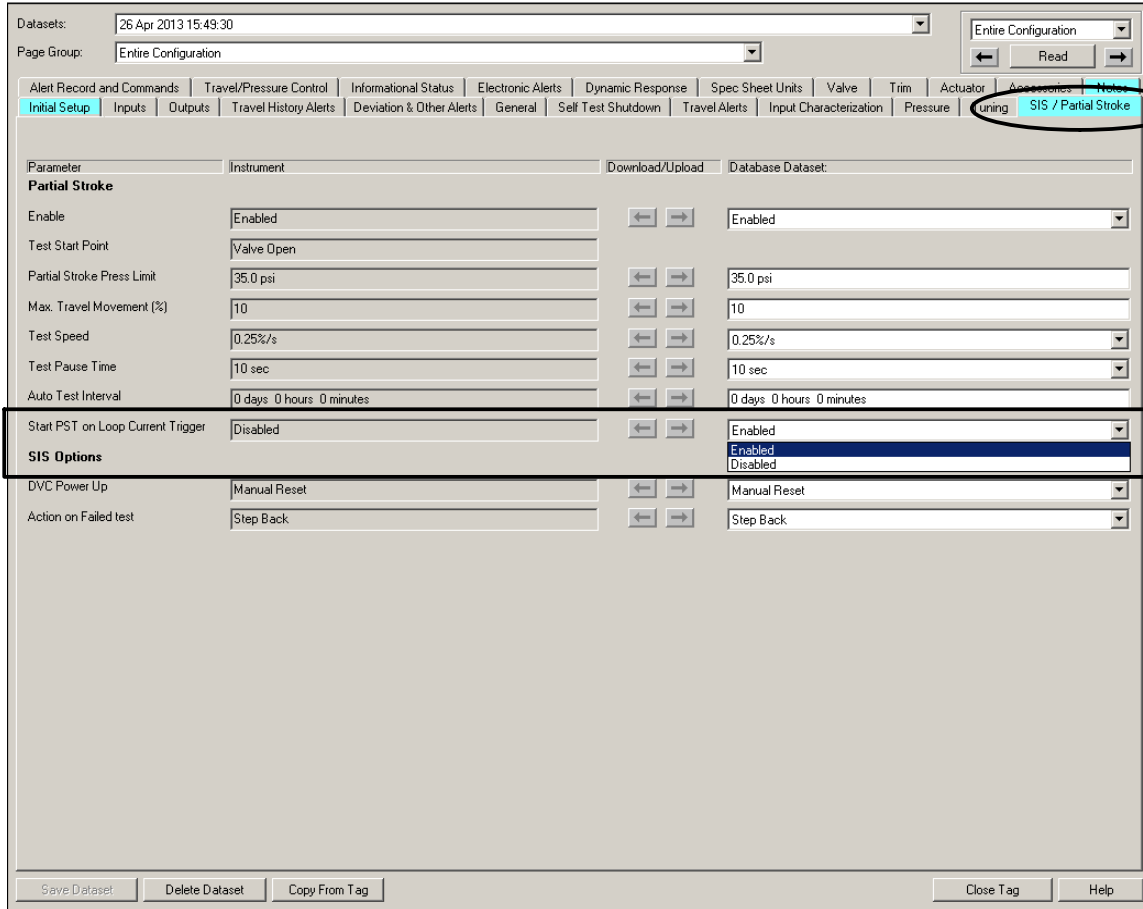
Configuring Loop Current Partial Stroke Test Initiation using ValveLink™ software

Note

Loop current Partial Stroke Testing applies to DVC6200 SIS in Point-to-Point operation only.



Using ValveLink software, select *Instrument Setup > Detailed Setup* and find the SIS / Partial Stroke tab. Find the Start PST on Loop Current Trigger parameter and set it to to “Enabled”.



Initiating a Partial Stroke Test via Loop Current Trigger

When this feature is enabled, the digital valve controller will run a partial stroke test if the loop current is set to within $\pm 0.5\%$ of the PST Initiation Point. The loop current must remain at that point for the duration of the test. This feature is not available when a loop powered local control panel is installed.

PST Initiation Points:

Deenergize to Trip (DETT) Applications – 16 mA (Normal State 20 mA and trip State 4 mA – Normally used configuration with Relay A and Relay C)

Energize to Trip (ETT) – 8 mA (Normal State 4 mA and Trip State 20 mA – Normally used configuration with Relay B)

Canceling a Partial Stroke Test via Loop Current Trigger

To abort the test, the loop current must be returned to the normal current. Alternately, setting the loop current to its tripped state will override the PST and abide by the safety function.

Neither Emerson, Emerson Process Management, nor any of their affiliated entities assumes responsibility for the selection, use or maintenance of any product. Responsibility for proper selection, use, and maintenance of any product remains solely with the purchaser and end user.

Fisher, FIELDVUE, and ValveLink are marks owned by one of the companies in the Emerson Process Management business unit of Emerson Electric Co. Emerson Process Management, Emerson, and the Emerson logo are trademarks and service marks of Emerson Electric Co. All other marks are the property of their respective owners.

The contents of this publication are presented for informational purposes only, and while every effort has been made to ensure their accuracy, they are not to be construed as warranties or guarantees, express or implied, regarding the products or services described herein or their use or applicability. All sales are governed by our terms and conditions, which are available upon request. We reserve the right to modify or improve the designs or specifications of such products at any time without notice.

Emerson Process Management
Marshalltown, Iowa 50158 USA
Sorocaba, 18087 Brazil
Chatham, Kent ME4 4QZ UK
Dubai, United Arab Emirates
Singapore 128461 Singapore

www.Fisher.com