

# Converting a Router DTM Installation to ValveLink™ DTM



## Contents

<b>Introduction</b> .....	<b>3</b>
Purpose .....	3
Definitions, Acronyms & Abbreviations .....	3
Assumptions .....	3
References .....	4
<b>Procedure</b> .....	<b>5</b>
Backup AMS Device Manager Database .....	5
Export ValveLink Database Tags .....	6
Uninstall AMS Device Manager .....	7
Install ValveLink DTM .....	9
Update the Device Catalog in PACTware™ (HART) .....	11
Reconfigure PACTware Projects (HART) .....	12
Update Device Catalog and Reconfigure IACC™ (FF) .....	13
Launch ValveLink DTM .....	14
Import ValveLink Tag Data .....	15
Backup the ValveLink Database .....	15
Uninstall Router DTM .....	16

## Introduction

### Purpose

This document defines procedures to upgrade systems from AMS Device Manager, Router DTM, and AMS ValveLink™ SNAP-ON™ to the latest release of ValveLink DTM.

### Definitions, Acronyms & Abbreviations

FDT: Field Device Tool

DTM: Device Type Manager

### Assumptions

Personnel who carry out this procedure must have:

- Experience with Router DTM
- Experience with AMS Device Manager
  - Backup database
  - Uninstall AMS
- Experience with ValveLink Software
  - Installation and licensing
  - Exporting and importing tag data
- Access to a Windows user account with administrator privileges
- Knowledge of how to uninstall applications using Control Panel > Add or Remove Programs
- Ability to verify that the installation was successful
- Ability to verify that all tag data was migrated successfully

The user wants to migrate to ValveLink DTM, and the following software is currently installed:

- AMS Device Manager 9.0 SP3
- Router DTM 2.0.0.23
- AMS ValveLink SNAP-ON 7.3.2
- PACTware 3.0 SP5
- IACC 2.3

## References

AMS Suite: Intelligent Device Manager Installation Guide

ValveLink Software Installation Guide

ValveLink Software Quick Start Guide

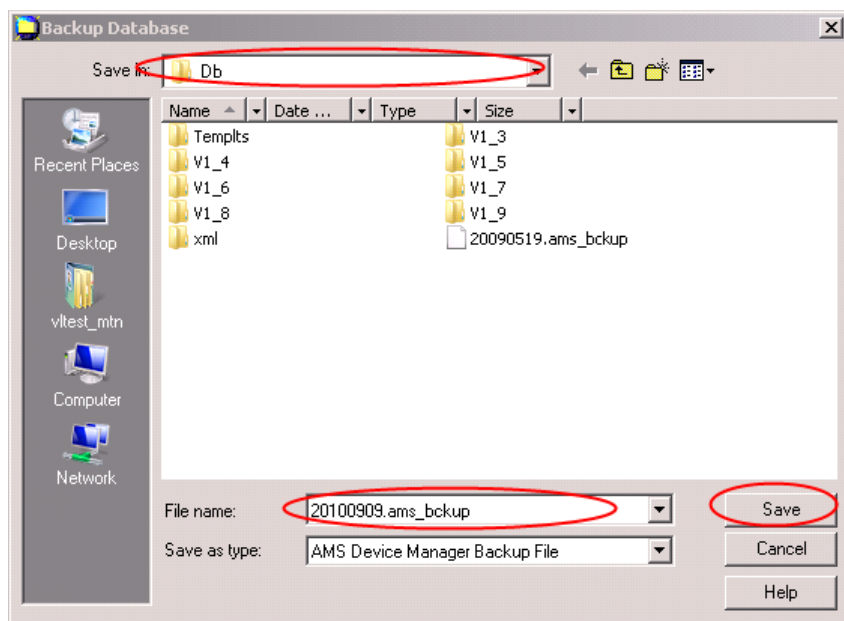
PACTware Quick Start Guide

IACC Quick Start Guide

## Procedure

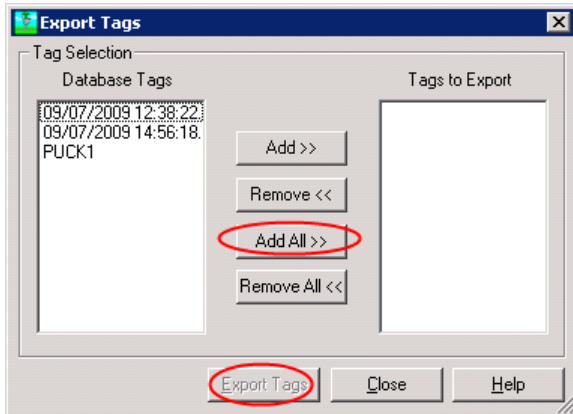
### Backup AMS Device Manager Database

1. Close all AMS Device Manager applications and any connections to the AMS database. This includes closing the client application connections from the other stations. All users must be logged off of AMS Device Manager.
2. If the AMS Device Manager Server icon in the system tray does not have a slash through it, right-click the icon and select Stop AMS Device Manager Server from the context menu.
3. From the taskbar, select Start > AMS Device Manager > Database Utilities > Database Backup. If you receive a message stating that you cannot perform the operation because one or more database connections have been found, select Stop Servers from the Start > AMS Device Manager menu on all AMS Device Manager stations.
4. In the Backup Database dialog box, select the folder where the backup file will be stored. Note: the backup file must be saved to a local drive. Click the Save button.



## Export ValveLink Database Tags

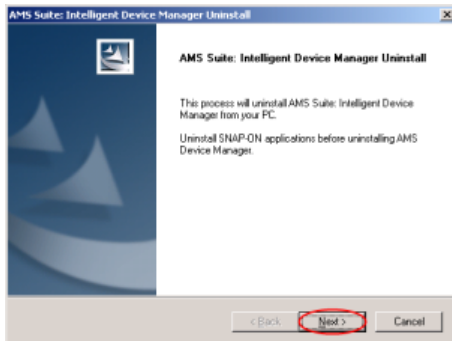
1. Launch AMS ValveLink SNAP-ON
  - a. From the Tag menu, select Export Tag Data...



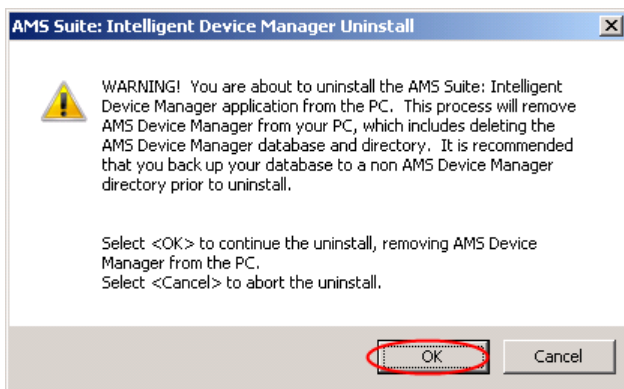
- b. Select the tags to export using the Add All>> button
    - c. Click the Export Tags button
    - d. Browse to the appropriate directory and click Save
    - e. When exporting has completed, click the Close button
2. Exit AMS ValveLink SNAP-ON
3. Exit AMS Device Manager

## Uninstall AMS Device Manager

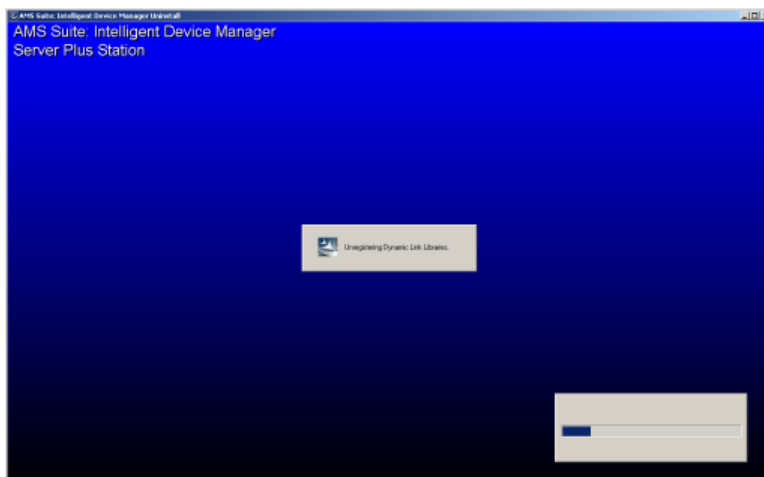
1. Select Start > Settings > Control Panel > Add or Remove Programs
2. Click on AMS Suite: Intelligent Device Manager 9.0 and select Remove. The AMS Device Manager InstallShield Wizard will start.
3. Click the Next button



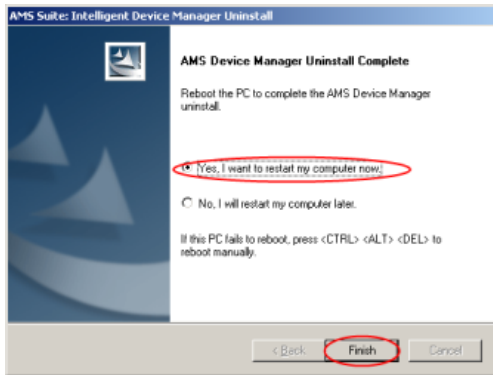
4. Click the OK button



5. The uninstall procedure will begin



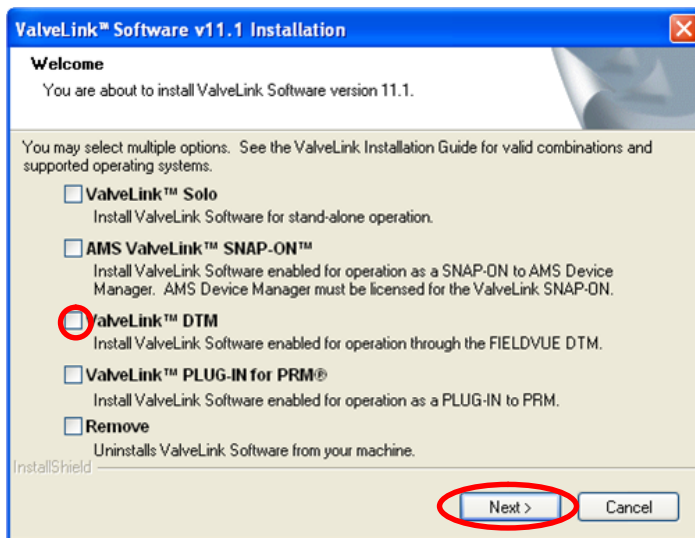
6. Once the procedure has completed, reboot the computer when prompted





## Install ValveLink DTM

1. Close any open applications on your desktop
2. Insert the CD containing the ValveLink Software 11.1 installation files into the CD drive of your computer. Run setup.exe located on this CD.
3. Click the Next button to begin the installation process
4. The following window will appear. Select ValveLink DTM and click the Next button.



5. Follow the on-screen prompts to finish the installation

---

### Note

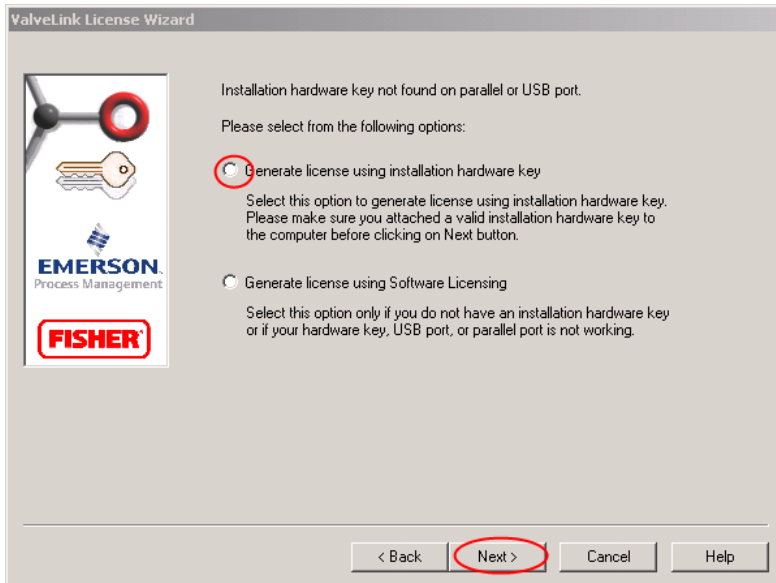
Select Keep Existing Database

---

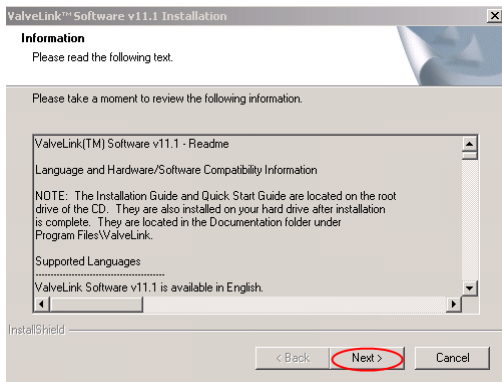
6. You will be prompted to run License Wizard at the end of the installation process. When the following message is displayed insert the USB hardware key and click OK.



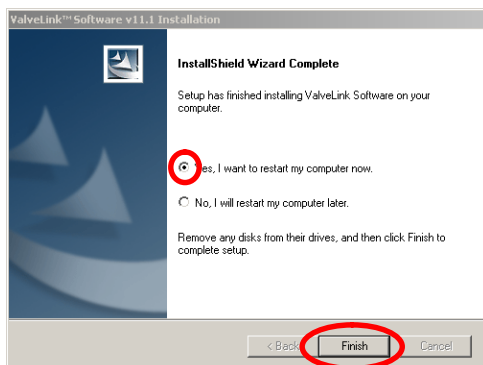
7. Select Generate license using installation hardware key and click Next. Follow the on-screen prompts.



8. When the Readme.txt is displayed, read it, then click the Next button.

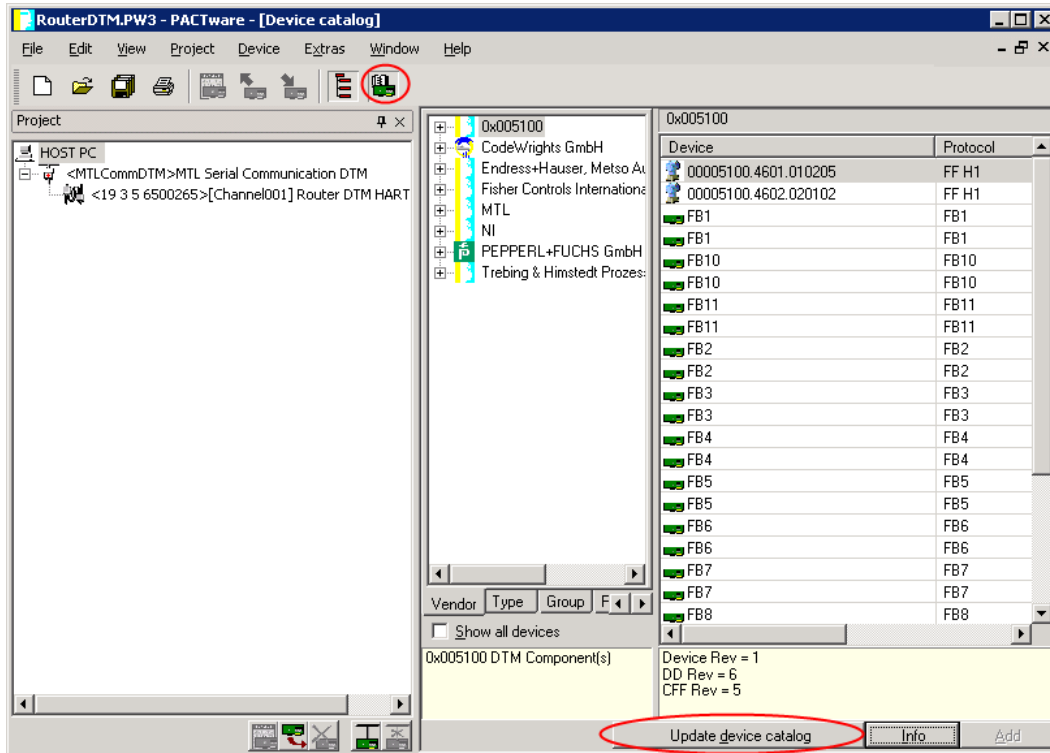


9. Reboot the computer when prompted.

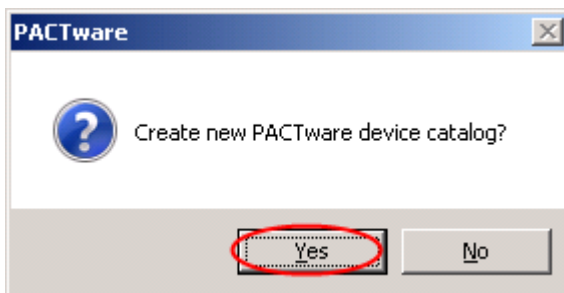


## Update the Device Catalog in PACTware (HART)

1. Launch PACTware
2. Open Device Catalog using either the toolbar icon or by pressing F3 on your keyboard



3. Select the Update device catalog button
4. Click the Yes button to update the device catalog

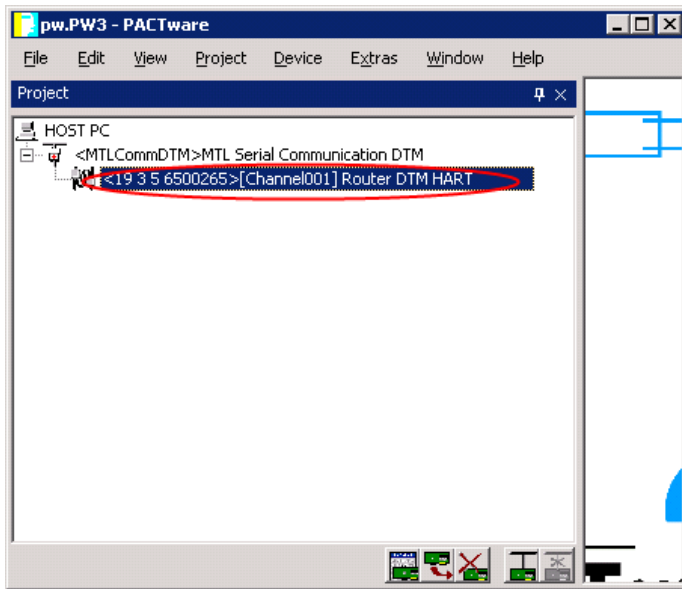


5. The following window will appear and the device catalog will be updated



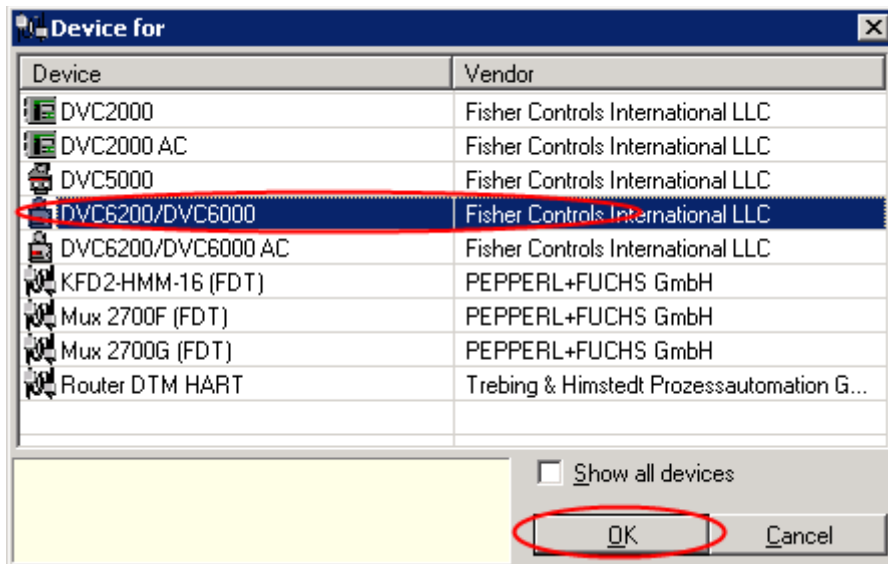
## Reconfigure PACTware Projects (HART)

1. Open a Router DTM project in PACTware



2. For each instance of Router DTM in the project:

- Right click on the Router DTM instance and select Delete Device
- Right click and select Add Device
- Select your device type from the list and click OK

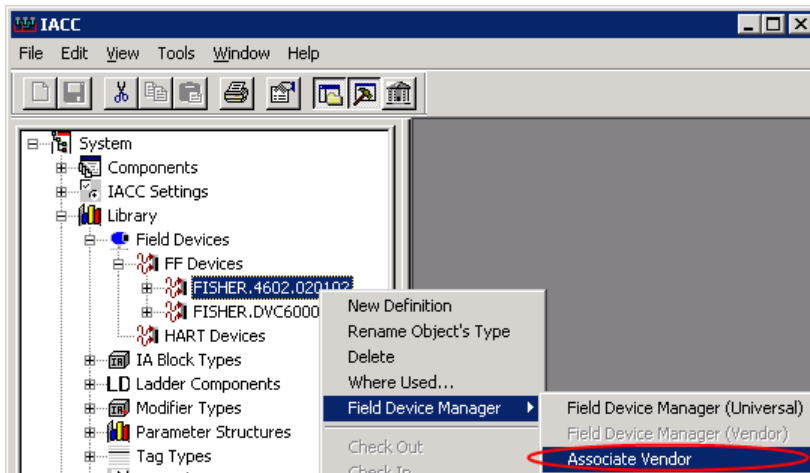


3. Save the project

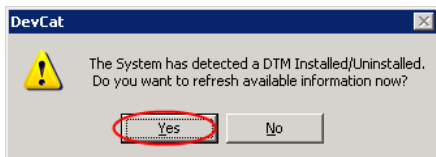
4. Repeat for every project that contains a Router DTM instance

## Update Device Catalog and Reconfigure IACC (FF)

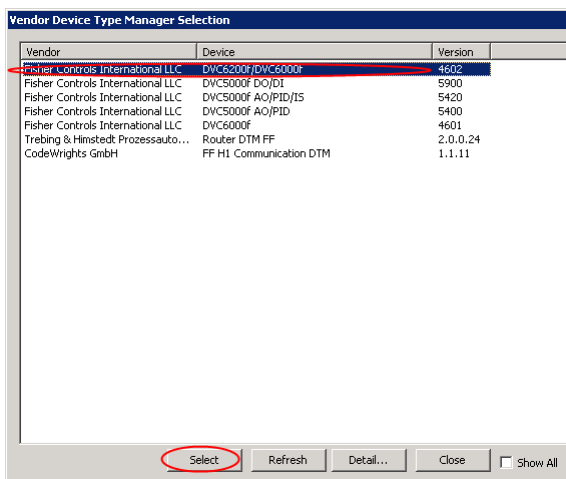
1. Open IACC
2. Go to the System tab
3. Right click on one of the Fisher FIELDVUE™ device templates and select Field Device Manager > Associate Vendor



4. When you are prompted to rebuild the catalog, select Yes



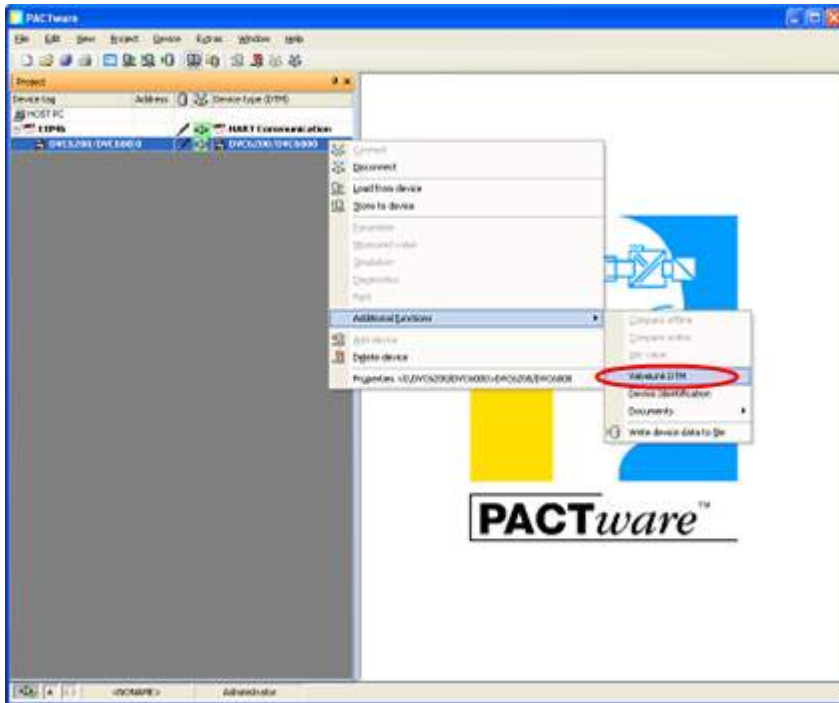
5. Select your device type from the list and click Select



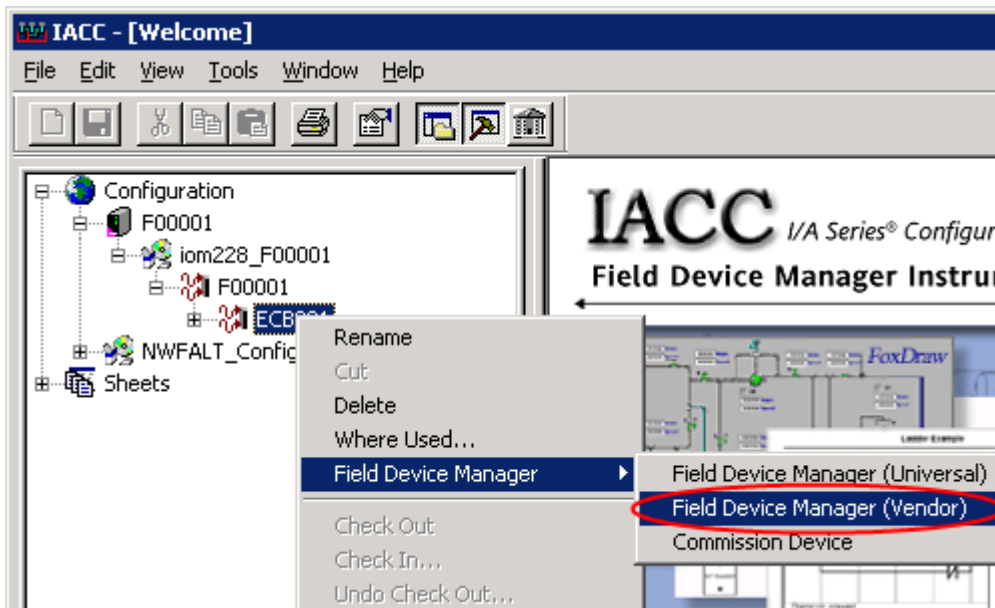
6. Repeat for every FIELDVUE device template on the System tab

## Launch ValveLink DTM

1. From PACTware: Right click on the device and muse-over Additional functions. Select ValveLink DTM.

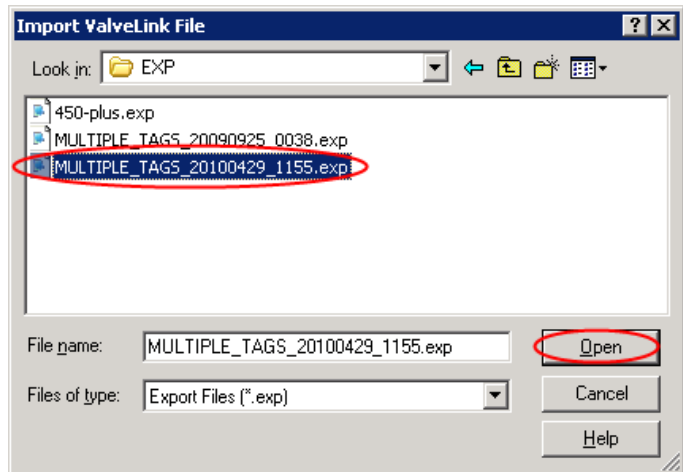


2. From IACC: Right click on the device and mouse-over Field Device Manager. Select Field Device Manager (Vendor).



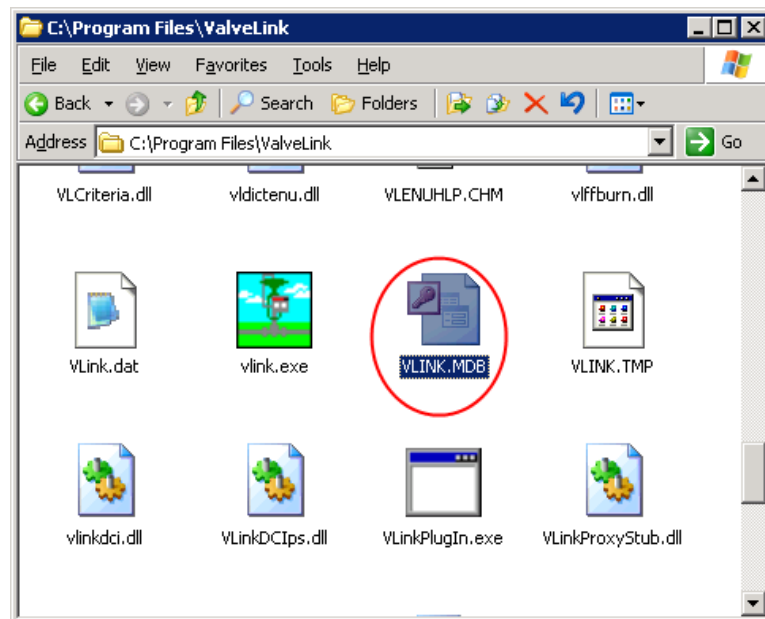
## Import ValveLink Tag Data

1. Launch ValveLink DTM
2. From the Tag menu, select Import Tag Data...
3. Select the file that contains your ValveLink tags. Click the Open button.



## Backup the ValveLink Database

1. Close ValveLink DTM
2. Open Windows Explorer to the folder where ValveLink was installed. This is usually c:\program files\valvelink.
3. Copy vlink.mdb to a safe location for backup



## Optional

### Uninstall Router DTM

1. Select Start > Settings > Control Panel > Add or Remove Programs
2. Click on TH AMS Device Manager Communications Components and select Remove
3. Follow the on-screen prompts

---

#### Note

Neither Emerson, Emerson Process Management, nor any of their affiliated entities assumes responsibility for the selection, use, or maintenance of any product. Responsibility for the selection, use, and maintenance of any product remains with the purchaser and end user.

---

Fisher, ValveLink, SNAP-ON, and FIELDVUE are marks owned by one of the companies in the Emerson Process Management business division of Emerson Electric Co. Emerson Process Management, Emerson, and the Emerson logo are trademarks and service marks of Emerson Electric Co. All other marks are the property of their respective owners.

The contents of this publication are presented for informational purposes only, and while every effort has been made to ensure their accuracy, they are not to be construed as warranties or guarantees, express or implied, regarding the products or services described herein or their use or applicability. All sales are governed by our terms and conditions, which are available upon request. We reserve the right to modify or improve the designs or specifications of such products at any time without notice. Neither Emerson, Emerson Process Management, nor any of their affiliated entities assumes responsibility for the selection, use or maintenance of any product. Responsibility for proper selection, use, and maintenance of any product remains solely with the purchaser and end user.

Emerson Process Management  
Marshalltown, Iowa 50158 USA  
Sorocaba, 18087 Brazil  
Chatham, Kent ME4 4QZ UK  
Dubai, United Arab Emirates  
Singapore 128461 Singapore

[www.Fisher.com](http://www.Fisher.com)