

December 2010

## Position Monitor Bracket (PMB) Mounting Kit

### Introduction

This Installation Sheet covers the assembly and installation instructions and parts list for Position Monitor Bracket (PMB) Mounting Kit.

For more information on 4300 Series Wireless Position Monitor and on regulators used with this product, refer to full product literature:

#### Fisher® 4320 Wireless Position Monitor:

D103392X012

Type 63EG: D100315X012

Type 1098-EGR: D100339X012

Type 1190: D101644X012

Type 1290: D101645X012

Type EZR: D102600X012

The Position Monitor Bracket or PMB is the bracket and hardware used to mount the 4300 Series Wireless Position Monitors to the travel indicator of Types 63EG, 1098-EGR, 1190, 1290, and EZR regulators. The PMB mounting kit is compatible with both Topworx 4310 (open/partially open/closed) and Fisher 4320 (open/percent travel/closed) Wireless Position Monitors.

### Specifications

#### Construction Materials

*Bracket:* 304 Stainless steel

*Hardware:* 18-8 Stainless steel

### Assembly and Installation

Read fully and understand the assembly and installation instructions in this manual and the instruction manuals of the appropriate regulator type and 4300 Series Wireless Position Monitor before installing the Position Monitor Bracket Assembly.

The regulator cannot be in operation during the assembly and installation of the position monitor and the PMB assembly. Refer to the appropriate instruction

manual for proper shutdown of the system before attempting to mount the position monitor.

For best results, the PMB Assembly should only be installed on site.

All key numbers are referenced in Figure 1.

1. If used, remove the protective cap covering the regulator stem and travel indicator.

#### CAUTION

**Securely grip the regulator stem when removing attached parts and when installing the hex nut (key 6) to prevent the stem from potentially backing down into the regulator.**

Remove all parts attached to the regulator stem and install a new hex nut (key 6).

2. Fasten the position monitor to the monitor bracket (key 1) using three cap screws (key 4) and three lock washers (key 5). Apply Threadlocker adhesive (key 11, not shown) and securely torque the cap screws to 100 inch-pounds / 11 N•m.
3. Install the monitor bracket and position monitor setup (from step 3) to the regulator using the panel nut (key 3). This joint allows the monitor bracket (key 1) to slide back and forth and from side to side for optimal adjustment. **Finger tighten only until final adjustment.**

#### Note

**The PMB mounting kit is designed for small but necessary adjustments at most of the fastened joints. Because an adhesive is required on all the fasteners of the PMB assembly, all fasteners must**



# Position Monitor Bracket (PMB) Mounting Kit

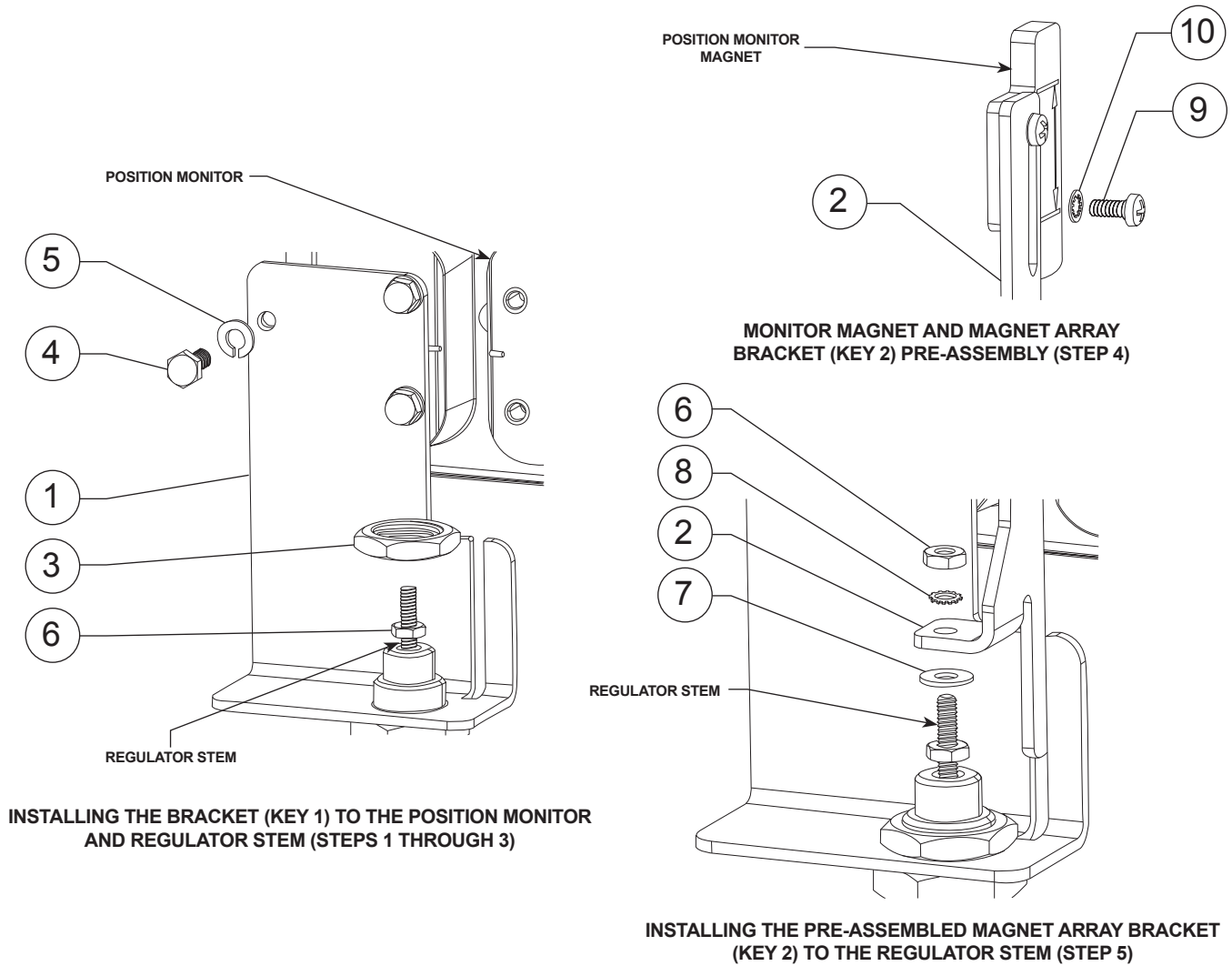


Figure 1. PMB Mounting Kit Assembly and Installation

be finger tightened only until the position monitor and bracket assembly have been properly located. Apply Threadlocker adhesive and fully tighten the joints to the specified torque values only during final adjustment.

4. Pre-assemble the monitor magnet to the magnet array bracket (key 2) using two machine screws (key 9) and two external tooth star washers (key 10). **Finger tighten only until final adjustment.**

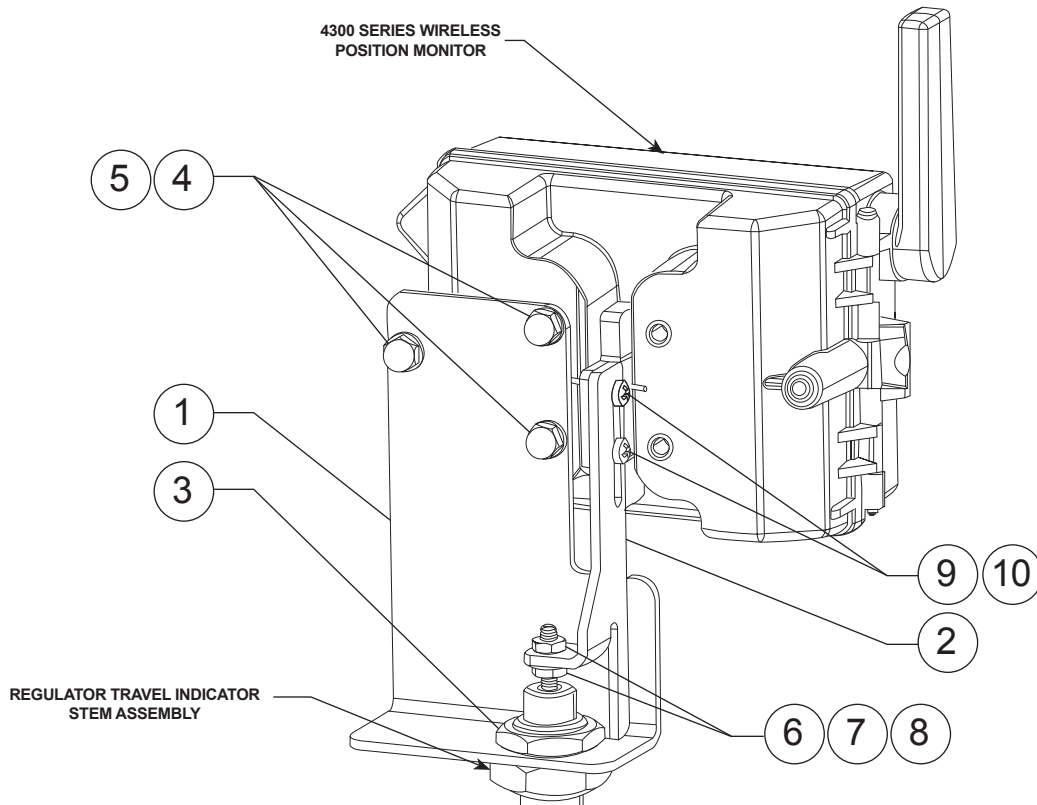
**Note**

The mounting slot of the magnet array bracket (key 2) is designed for multiple regulators. The optimal location of the array bracket is determined by the limits

of the regulator and the wireless position monitor. Consult the appropriate instruction manual to determine the optimal location.

5. Fasten the pre-assembled magnet array bracket (key 2) to the regulator stem using a flat washer (key 7), an external tooth star washer (key 8), and a hex nut (key 6). Additional vertical adjustment of the monitor magnet may be obtained through this fastening joint. **Finger tighten only until final adjustment.**
6. Both the monitor bracket (key 1) and magnet array bracket (key 2) are designed to allow adjustments in the assembly so that the monitor magnet array can be located properly as specified by the wireless position monitor Instruction Manual.

# Position Monitor Bracket (PMB) Mounting Kit



**Figure 2. PMB Mounting Kit Assembly Drawing**

After the monitor magnet array has been properly located, perform final adjustments to all previously finger-tightened joints. Apply Threadlocker adhesive and tighten the joints to the following specifications:

- From step 3, torque the panel nut (key 3) to 700 inch-pounds / 79 N•m.
- From step 5, torque the hex nut (key 6) to 15 inch-pounds / 1.7 N•m.
- From step 4, securely tighten the two machine screws (key 9).

## Startup and Adjustment

After mounting the wireless position monitor on the regulator, the monitor should be calibrated before the regulating system is turned back on.

A known method of locating the minimum and maximum travel to calibrate the 4300 Series Wireless

Position Monitor is required before it can become operational. Calibrate the wireless position monitor based on the procedure found in the appropriate instruction manual.

Follow all local procedures and refer to the appropriate regulator instruction manual when restarting the regulating system.

## Parts List (Figure 2)

Key	Description	Part Number
1	Monitor Bracket	ERAA00141A0
2*	Magnet Array Bracket	ERAA00142A0
3*	Panel Nut	ERAA00160A0
4*	Cap Screw (3 required)	ERAA00178A0
5	Lock Washer (3 required)	ERAA00179A0
6*	Hex Nut (2 required)	ERAA00181A0
7*	Flat Washer	ERAA00161A0
8	External Tooth Star Washer	ERAA00180A0
9*	Pan Head Machine Screw (2 required)	ERAA00182A0
10*	External Tooth Star Washer (2 required)	ERAA00183A0
11*	Threadlocker (adhesive, not shown)	ERAA00184A0

\*Recommended spare part.

# Position Monitor Bracket (PMB) Mounting Kit

---

## Industrial Regulators

### Emerson Process Management Regulator Technologies, Inc.

USA - Headquarters  
McKinney, Texas 75069-1872, USA  
Tel: +1 800 558 5853  
Outside U.S. +1 972 548 3574

Asia-Pacific  
Shanghai 201206, China  
Tel: +86 21 2892 9000

Europe  
Bologna 40013, Italy  
Tel: +39 051 419 0611

Middle East and Africa  
Dubai, United Arab Emirates  
Tel: +971 4811 8100

## Natural Gas Technologies

### Emerson Process Management Regulator Technologies, Inc.

USA - Headquarters  
McKinney, Texas 75069-1872, USA  
Tel: +1 800 558 5853  
Outside U.S. +1 972 548 3574

Asia-Pacific  
Singapore 128461, Singapore  
Tel: +65 6770 8337

Europe  
Bologna 40013, Italy  
Tel: +39 051 419 0611  
Chartres 28008, France  
Tel: +33 2 37 33 47 00

## TESCOM

### Emerson Process Management Tescom Corporation

USA - Headquarters  
Elk River, Minnesota 55330-2445, USA  
Tels: +1 763 241 3238  
+1 800 447 1250

Europe  
Selmsdorf 23923, Germany  
Tel: +49 38823 31 287

Asia-Pacific  
Shanghai 201206, China  
Tel: +86 21 2892 9499

For further information visit [www.fisherregulators.com](http://www.fisherregulators.com)

The Emerson logo is a trademark and service mark of Emerson Electric Co. All other marks are the property of their prospective owners. Fisher is a mark owned by Fisher Controls International LLC, a business of Emerson Process Management.

*The contents of this publication are presented for informational purposes only, and while every effort has been made to ensure their accuracy, they are not to be construed as warranties or guarantees, express or implied, regarding the products or services described herein or their use or applicability. We reserve the right to modify or improve the designs or specifications of such products at any time without notice.*

Emerson Process Management Regulator Technologies, Inc. does not assume responsibility for the selection, use or maintenance of any product. Responsibility for proper selection, use and maintenance of any Emerson Process Management Regulator Technologies, Inc. product remains solely with the purchaser.