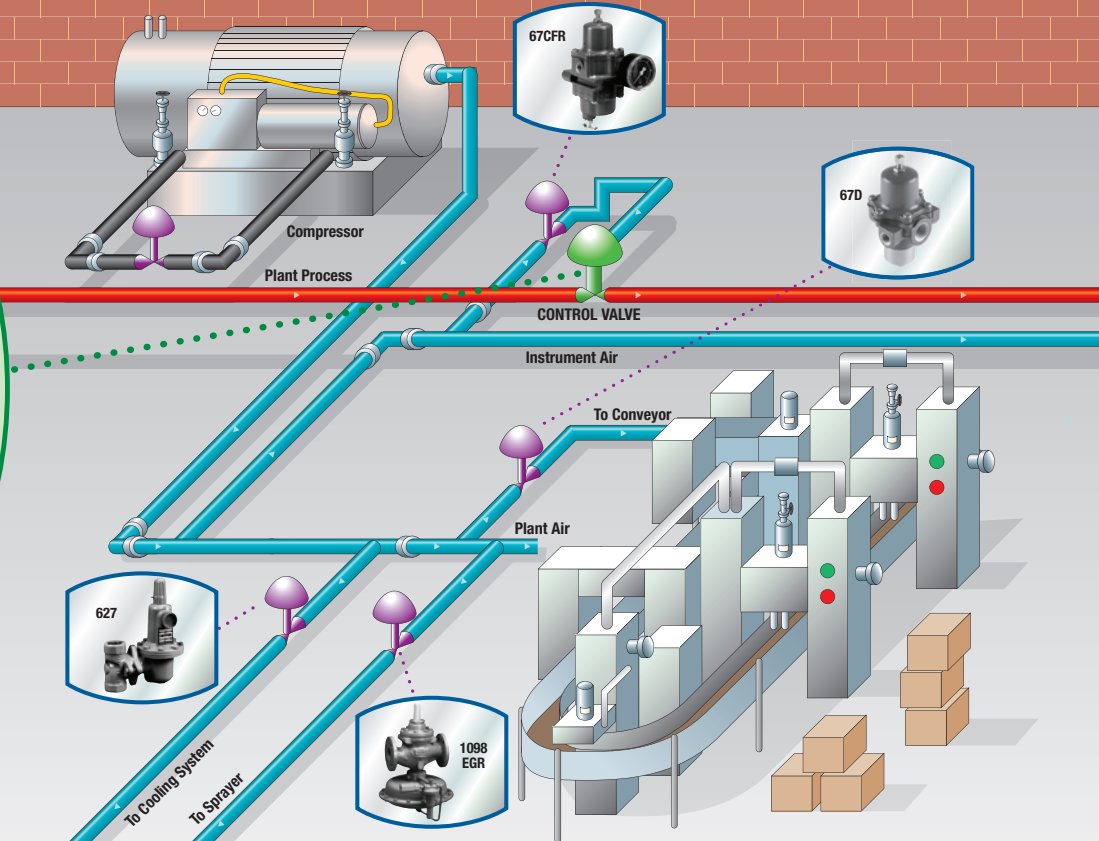
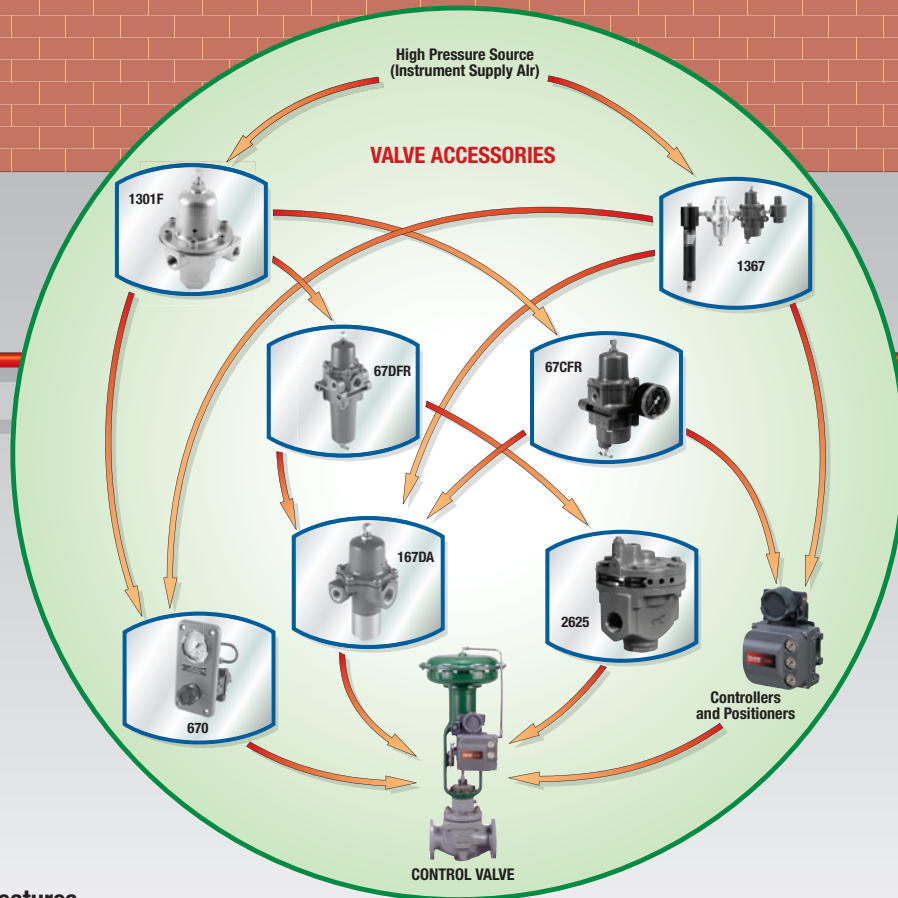


# AIR APPLICATION MAP



## Features

- Integral Filters
- Technical Support
- Smallest to Largest Flows
- Compact
- Wide Product Selection
- Built to Last
- Time-Proven Design
- Rugged Construction
- 0 to 6000 psig (0 to 414 bar)



© 2009 Emerson Process Management Regulator Technologies, Inc. All rights reserved. Printed in the U.S.A. 10/09. Fisher, Emerson Process Management, and the Emerson Process Management design are marks of one of the Emerson Process Management group of companies. All other marks are the property of their respective owners.



D351351X012