

Type R232 Integral Two-Stage Regulator

Introduction

The Type R232 is an Underwriters Laboratories listed regulator designed for LP-Gas systems. The unit is designed to reduce the tank pressure to an outlet pressure of 11 inches water column through an integral two-stage system. Designed for installations with small domestic loads. The units compact size makes it ideal for tight fit applications. Screened drip-lip vents are oriented over the outlet as standard.

Features

- **20 Year Recommended Replacement Life** – The R232 is designed using rugged time proven design concepts and constructed of corrosion resistant materials, both internally and externally. With proper installation and periodic inspection and maintenance the R232 regulator will meet a 20 Year Recommended Replacement Life.
- **Dual Gauge Taps** – Built-in 1/8 inch NPT gauge taps orificed to a number 54 drill size on the intermediate and outlet side of the regulator allow for easy gas system checks.
- **Durability** – Design utilizes the same durable valve stem linkage design used in R600 series regulators for reliable lockup performance.
- **Improved Regulation** – A large fabric-reinforced diaphragm delivers accurate and stable regulation.
- **Versatile Inlet Connections** – Inlet fitting is available in NPT and FPOL configurations.
- **Easy Installation** – The units compact size and easily accessible inlet and outlet wrench flats make installation easy even in the tightest installations. Optional vent orientation with both vents oriented opposite gauge taps available.
- **Superior Overpressure Protection** – The combination of a high capacity relief valve and large vent provide overpressure protection that exceeds UL standards.
- **Corrosion-Resistant** – Added corrosion resistance from an internal and external coating process for all castings prior to painting, stainless steel relief valve spring and retainer and a corrosion resistant relief valve seat.
- **Positive Draining Spring Case** – When installed properly with the spring case vents pointed down, the design allows moisture formed in the spring case to drain out limiting the problems with corrosion and freezing water in the spring case.

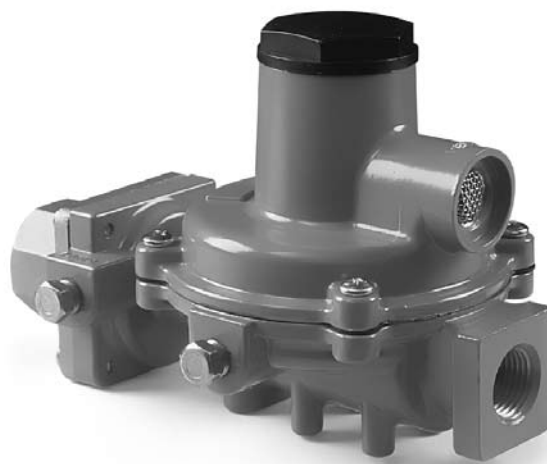


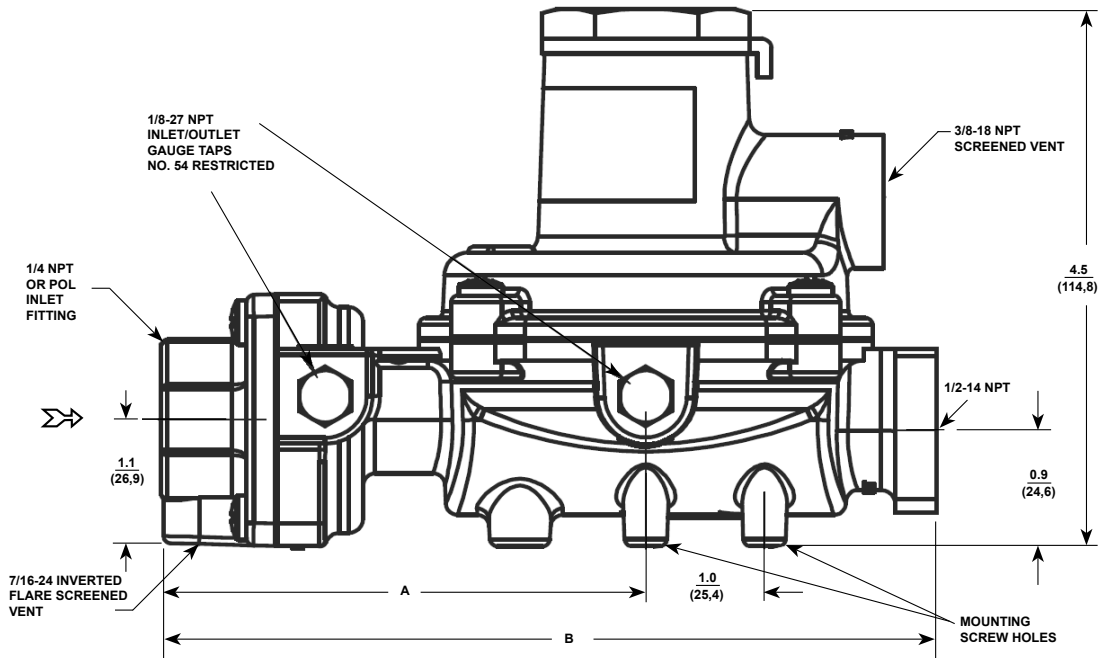
Figure 1. Type R232 Integral Two-Stage Regulator

Bulletin LP-7: R232

Table 1. Ordering Information

TYPE NUMBER	CAPACITY BTU/HR PROPANE ⁽¹⁾	CONNECTIONS INLET x OUTLET	OUTLET PRESSURE SETTING	OUTLET PRESSURE RANGE
R232-BBF	350,000	1/4-inch x 1/2-inch NPT	11 inches wc (27 mbar)	9 1/2 – 13 inches wc (24 – 32 mbar)
R232-BBFXA ⁽²⁾				
R232-HBF		FPOL x 1/2-inch NPT		
R232-HBFXA ⁽²⁾				

1. Capacity is based on 30 PSIG (2.07 bar) inlet pressure and 2 inches water (5 mbar) column droop.
 2. First and second-stage spring case vents opposite gauge taps.



INLET	A	B
1/4	4.06 (103,1)	6.51 (165,4)
POL	4.60 (116,8)	7.05 (179,1)

INCHES
(mm)

Figure 2. Type R232 Dimensions

LP-Gas Equipment

Emerson Process Management Regulator Technologies, Inc.

USA - Headquarters
 McKinney, Texas 75069-1872 USA
 Telephone: 1 (800) 558-5853
 Telephone: 1 (972) 548-3574

For further information visit www.fisherregulators.com/lp

The Emerson logo is a trademark and service mark of Emerson Electric Co. All other marks are the property of their prospective owners. Fisher is a mark owned by Fisher Controls, Inc., a business of Emerson Process Management.

The contents of this publication are presented for informational purposes only, and while every effort has been made to ensure their accuracy, they are not to be construed as warranties or guarantees, express or implied, regarding the products or services described herein or their use or applicability. We reserve the right to modify or improve the designs or specifications of such products at any time without notice.

Emerson Process Management does not assume responsibility for the selection, use or maintenance of any product. Responsibility for proper selection, use and maintenance of any Emerson Process Management product remains solely with the purchaser.