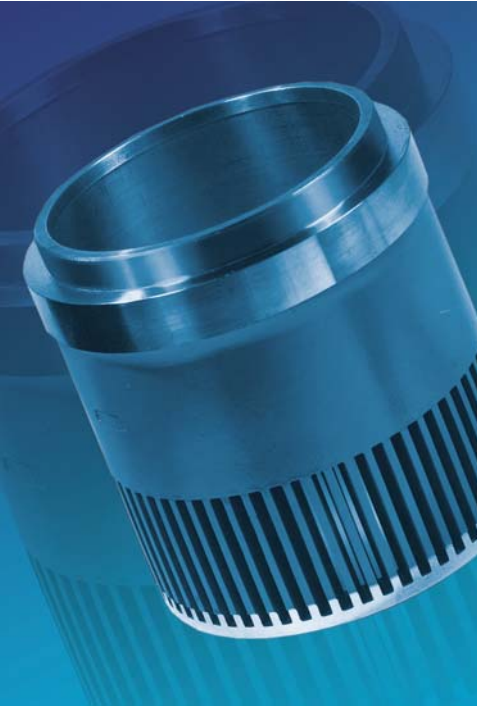


For more Severe Service solutions see us at www.fishersevereservice.com.



Whisper Trim® I cage offers proven aerodynamic noise control effective in vapor, gas, or steam flow applications where damaging noise and vibration are a concern.

Features:

- **Optimum Performance** - Offers excellent noise reduction and high flow capacity
- **Noise Control** - A well established and proven technology that has been used in numerous applications to provide up to 18 dBA of noise attenuation compared to the same valve with standard trim.
- **Easy Maintenance** - Quick-change trim allows fast and easy inspection or replacement without taking the valve body out of the pipeline.
- **Longer Trim Life** - Standard hardened material provides exceptional wear resistance.
- **Trim Interchangeability** - Whisper® Trim I is interchangeable with standard trims.

- **Characterization** - Special characterized cages are available to provide customer specified rangeability for specific system requirements.

Operational Overview:

The Whisper Trim I lowers valve noise by utilizing multiple orifices of special shape, size and spacing. These orifices break up turbulent fluid streams, reducing noise-producing interactions. The trim shifts acoustic energy to higher frequencies that are not readily absorbed by downstream piping. At high frequencies, the piping radiates much less sound in the audible range, which also helps to reduce strain energy and combat piping fatigue.

The exit jets from the trim are essentially parallel. This avoids shock cell interaction of the outlet jets that could cause turbulence and noise.

Tight shutoff is recommended to protect against high velocity erosion commonly experienced with seat leakage.

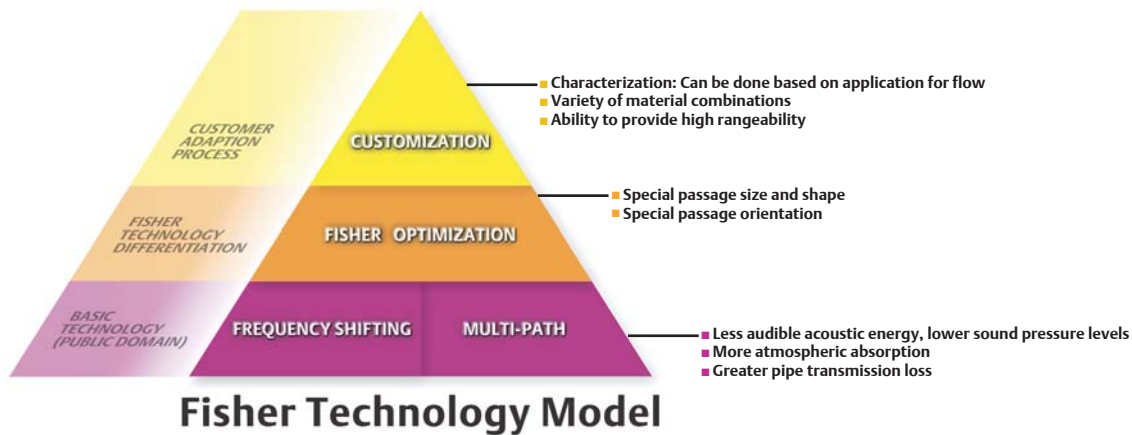
Typical Applications:

Hydrocarbon: Rich Amine Outgassing, Vent to Flare, Natural Gas Control

Power: LP Steam Vent

Emerson Process Management
Marshalltown, Iowa 50158 USA
www.fishersevereservice.com





Optimization Details:

- Special passage size and shape** - Our passage sizes have been designed to attain the utmost benefits of frequency shifting
- Special passage orientation** - Ensures jet independence and effective frequency shifting

© 2004 Fisher Controls International LLC

Fisher and Emerson Process Management are marks owned of one of the companies in the Emerson Process Management business division of Emerson Electric Co. The Emerson logo is a trademark and service mark of Emerson Electric Co. All other marks are the property of their respective owners.

The contents of this publication are presented for informational purposes only, and while every effort has been made to ensure their accuracy they are not to be construed as warranties or guarantees, expressed or implied, regarding the products described herein or their use or applicability. All sales are governed by our terms and conditions, which are available upon request. We reserve the right to modify or improve the designs or specifications of such products at any time without notice. Fisher does not assume responsibility for the selection, use or maintenance of any product. Responsibility for proper selection, use and maintenance of any Fisher product remains solely with the purchaser or end-user.

