

Using the UPSMON-Plus Monitoring Software


With UPSMON-Plus UPS Monitoring software, you can:

- Monitor battery level, load level, input and output current.
- Schedule daily, weekly, or monthly battery self tests, shutdowns, and start ups.
- Review UPS events by displaying the Event List and the Event Graph.
- Set up the e-mail notification which is regarding the UPS events, such as power outages and scheduled shutdowns.
- Set up the time between power failure and PC shutdown.

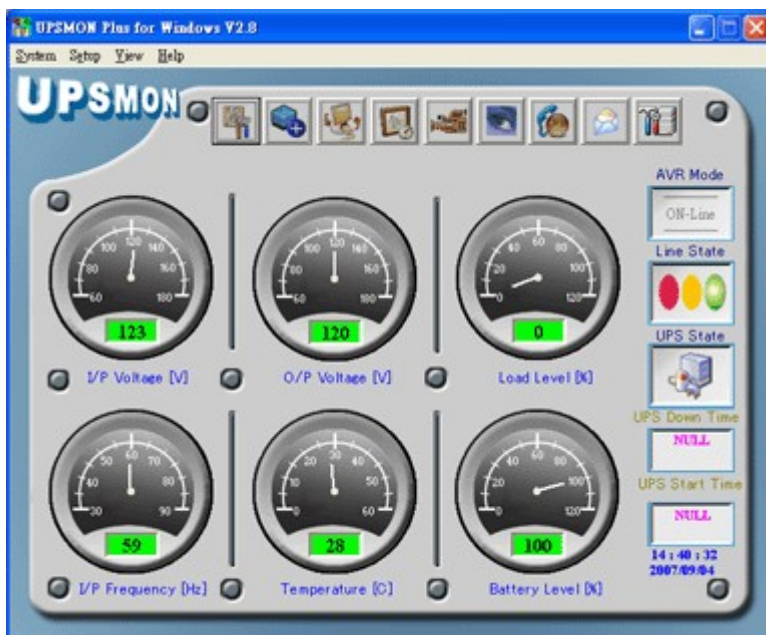
NOTE : We recommend you logged on as an administrator to install the UPSMON-Plus.

Opening the UPSMON-Plus UPS Monitoring software

To open the UPSMON-Plus UPS Monitoring software :

Double-click the UPSMON-Plus icon  in the system tray, or click Start on the taskbar, choose All Programs, UPSMON , and then select UPSMON again.

UPSMON-Plus buttons and indicators



UPSMON-Plus Software Buttons and Indicators

Button or Indicator	Function
---------------------	----------



System Configuration: Select to set up time spans before a power failure, warning message, and shutdown occurs.



Schedule: Select to set up daily, weekly, or monthly shutdowns, startups, or self tests.



Event Graph: Select to display a graph of recent UPS condition, such as input and output voltage, input and output frequency, load level, battery level, and dates and time.



Self Test: Select to perform a test to determine whether the UPS is working correctly.



E-mail: Select to set up an e-mail notification when there is a power failure, a self test, or the other UPS event.



Event List: Select to display a list of recent UPS events such as: a power failure, connection error, and shutdown and backup activity.



Battery Low: Red indicates the battery has less than 26% charge.

Power Fail: Yellow indicates a power failure.

Power Normal: Green indicates there is sufficient power.



Battery Level: Displays the UPS charge condition. When the charge is less than 26%, the Battery Level status bar turns red, and the UPS beeps each second.



Load Level: Displays battery load level for the UPS outlets.





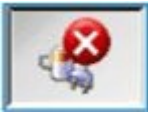
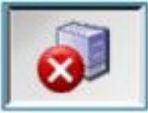
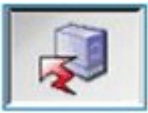
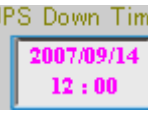
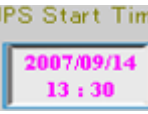
Input and Output Voltage: Displays input voltage to the UPS and output voltage from the UPS.



Input and Output Frequency: Displays input frequency to the UPS and output frequency from the UPS.



Temperature: Displays the temperature of the UPS.

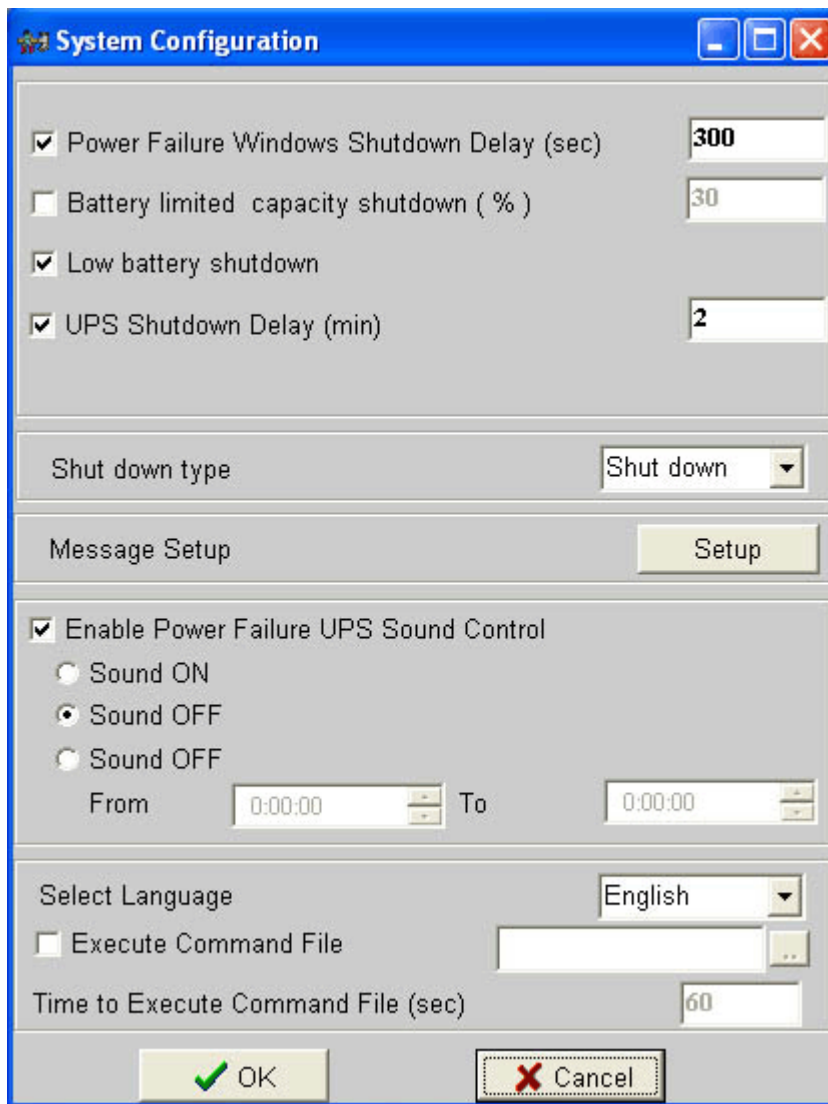
	Normal: Indicates whether UPS is working correctly and power is normal.
	UPSMON-Plus self test mode: Indicates if the UPS is in self-test mode.
	Battery is damaged: The battery needs to be replaced.
	UPS is damaged: UPS needs to be serviced or replaced.
	Power overload: Indicates the UPS is experiencing a power overload.
UPS Down Time 	Next Scheduled Shutdown: Indicates UPS when the next scheduled shutdown is set to occur.
UPS Start Time 	Next Scheduled Start up: Indicates UPS when the next scheduled start up is set to occur.

Setting up the UPSMON-Plus configuration

The total time span between a power failure and a PC and UPS shutdown depends on how many devices are connected to the UPS and the battery load level. For example, you could have 10minutes of potential time available with a low battery load, or you could have approximately 2 to 5 minutes of potential time available with a higher battery load. The UPSMON-Plus overrides any system configuration time spans that are inconsistent with the actual battery load level.

To set up your UPSMON-Plus:

1. Click the System Configuration button on the main window of the UPSMON-Plus.



2. Below conditions are only considered at the check-box been clicked up.

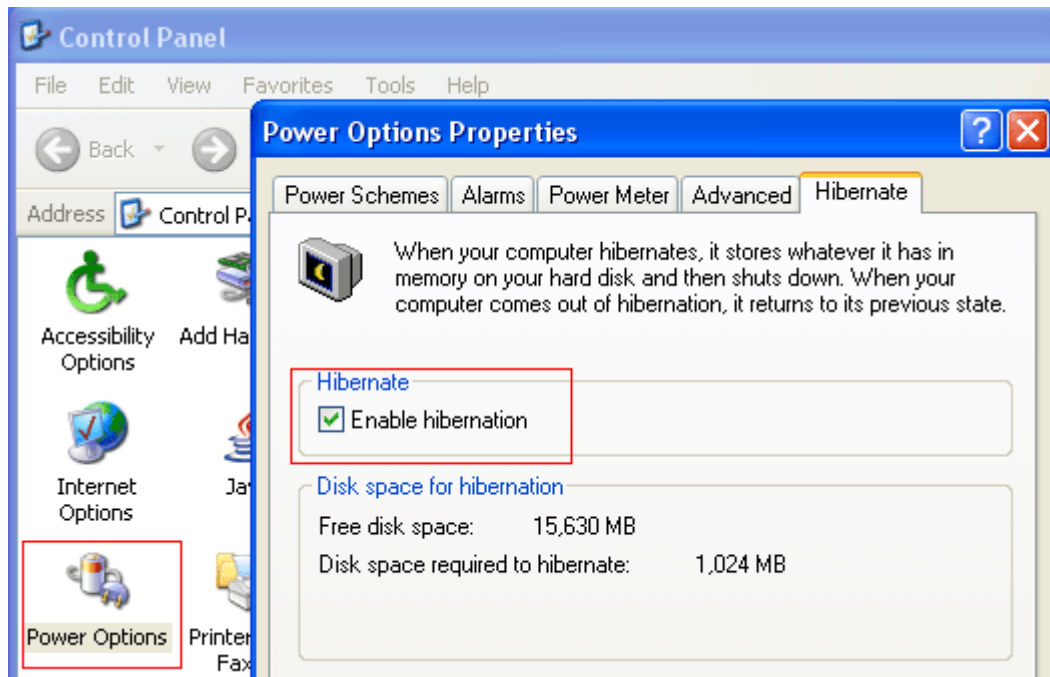


3. "Power Failure Windows Shutdown Delay" : after this period of time, your PC is going to shutdown (*300 default setting*) ==>(1)
4. "Battery limited capacity shutdown" : once the battery is decending to this level, your PC is going to shutdown (*30 % default*) ==>(1)
5. "Low battery shutdown" : if the status of the battery is low, your PC is immediately going to shutdown ==> (1)
When the certain one of the (1)itme-conditions is fulfilled, the PC would at once execute shutdown function
6. "UPS shutdown Delay" : this duation is afford to shutdown the PC (*2 minute default setting*).==>(2)
7. Shut down type : **Shut down** is completely running out of the procedures to save the programs to the hard disk then turn off the OS .
8. Shut down type : **Hibernate** is a feature to write the OS contents to hard disk before powering off the system. Then programs can continue executing when the OS be restored.

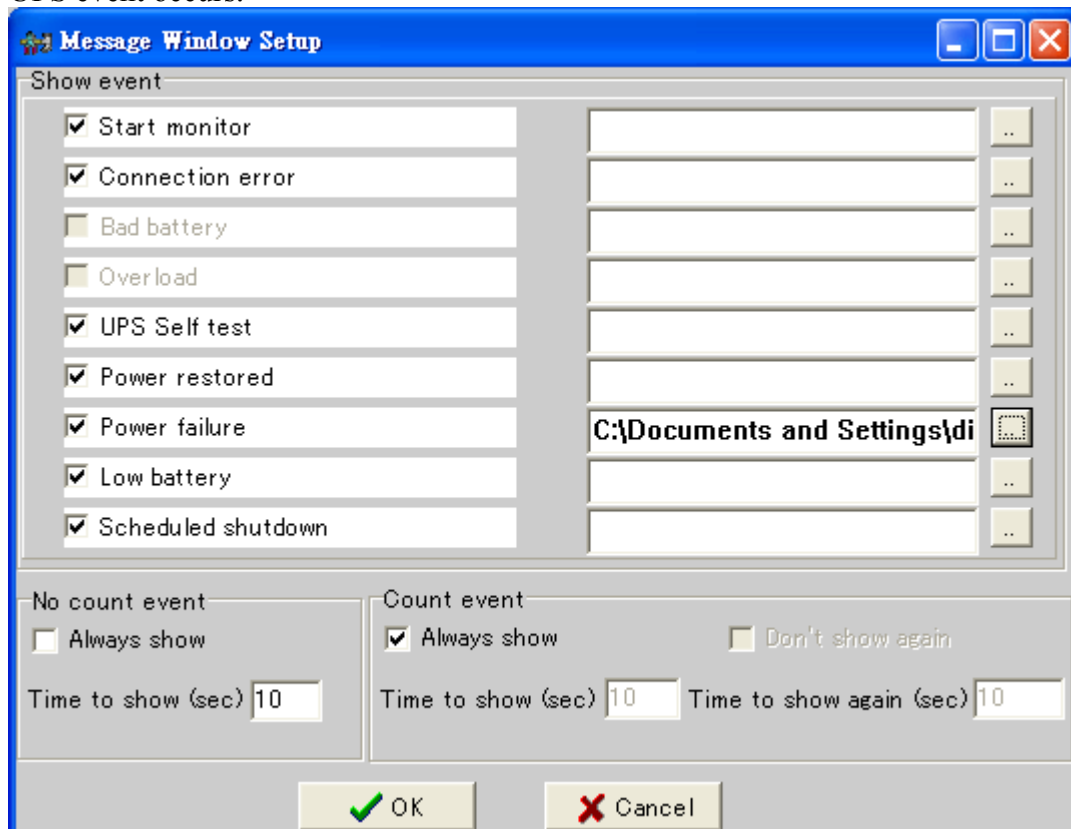
NOTE-1 : If you click no any (1)itme-checkbox, it means you only monitor the UPS but without PC shutdown.

NOTE-2 : If you invalid the (2)itme-checkbox, it would not send the signal to turn off the UPS.

NOTE-3 : In Windows 2003 and XP ==> You also have to enable the hibernate in *Power Options Properties* to support this function.



9. There are 3 steps to complete the "Time to Execute Command file (sec)"
 - a . When the time of the "power failure Windows shutdown delay (sec)" ran out.
 - b. Then UPSMON starts to "execute the user's command file" within this time.
 - c . After the "Time to Execute Command File(sec)", UPSMON would commit the OS shutdown and send out the command to turn off the UPS on time.
- 10.As the "Message Setup", it will immediately execute the user's command file when that certain UPS event occurs.



- 11."Enable Power Failure UPS Sound Control" : By these choices, you can manage the warning-beep alarm or not when the power failure occurs.
 - a . Sound ON : The UPS will loudly beep as soon as blackout happen.
 - b . Sound OFF : The UPS will keep silence even the UPS restart itself.

c . Sound OFF From A to B : Set up the regulation when you don't want to hear any warning.

NOTE : If you manually restart the UPS, the sound regulation of your UPS will back to the default.

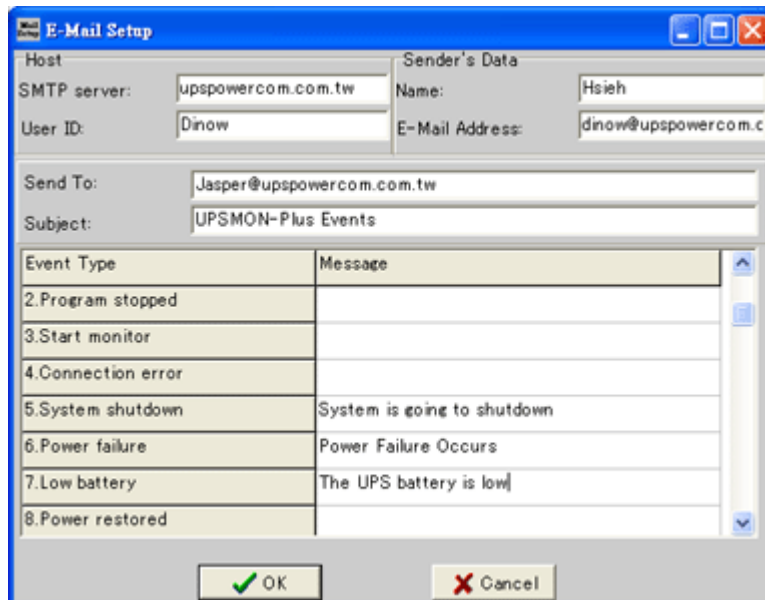
12. Click OK when you are finished.

Configuring the E-mail notification feature

The UPSMON-Plus allows you to set up e-mail notifications when certain events occur.

To configure the UPSMON-Plus e-mail notification:

1. Click the E-mail button on the main window of the UPSMON-Plus Monitor program.
2. Use your keyboard to enter the SMTP Server, User, Send To, and Subject information.
3. Type in messages you want to receive when certain UPS events occur.
4. Click OK.



NOTE: This feature requires your e-mail account to have an SMTP Server.

Checking the Event List and Event Graph

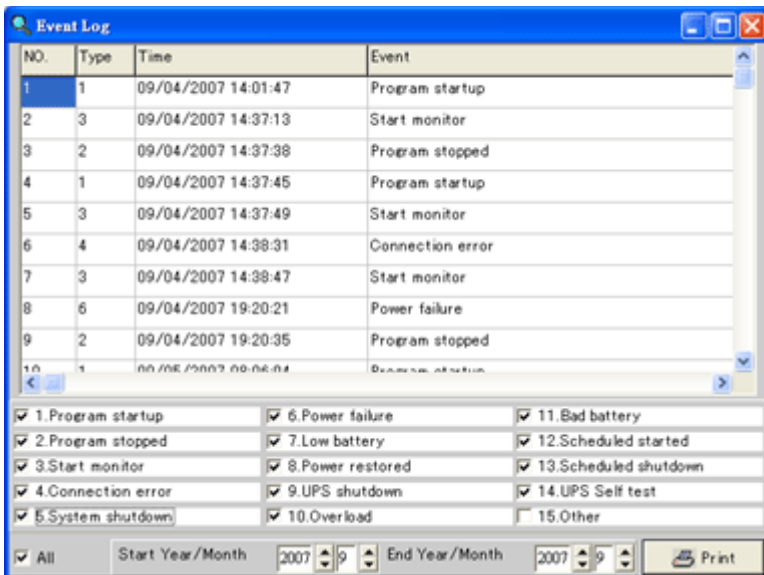
You can use the Event List and Event Graph windows to check the UPS events. These windows display past events up to 12 months.

Event List

In the Event List window, you can select the Displayed All Events check box to see all events of the past twelve months, or you can enter a specific date range to view your selected events. You must select each

event you want to see by selecting or deselecting the event check boxes at the bottom of the window. You also have the option of printing a record of these events. The battery events that can be displayed include:

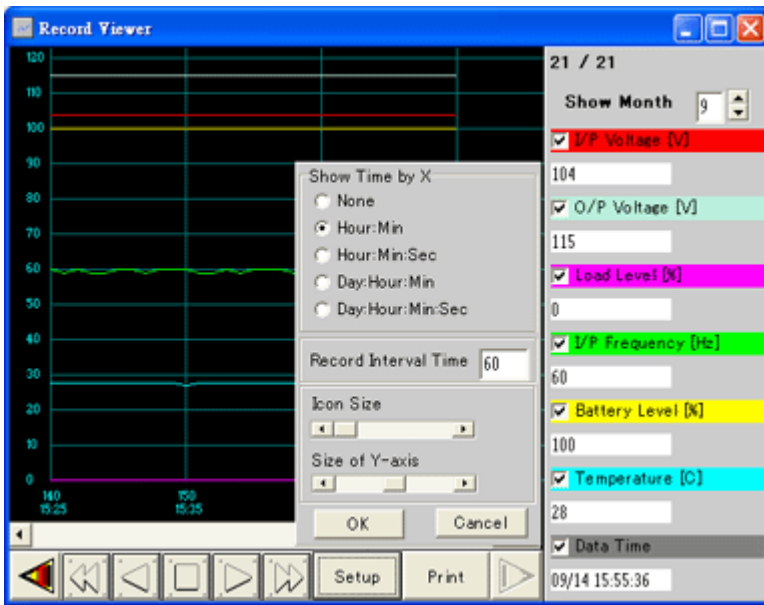
- Program startup
- Program stopped
- Start monitor
- Connection error
- System shutdown
- Power failure
- Low battery
- Power restored
- UPS shutdown
- Overload
- Bad battery
- Schedule started
- Schedule shutdown
- UPS Self test
- Other



Event Graph

The Event Graph allows you to display time by days, hours, minutes, and even seconds. The Event Graph displays all of the indicators that are displayed on the main window of the UPSMON-Plus. These indicators include:

- Input and Output Voltage
- Load Level
- Input and Output Frequency
- Battery Level
- Temperature
- Data Time

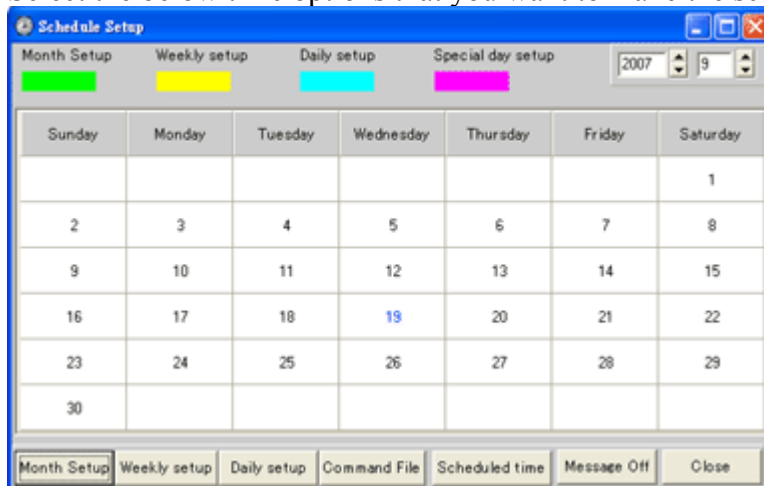


Scheduling UPSMON-Plus events

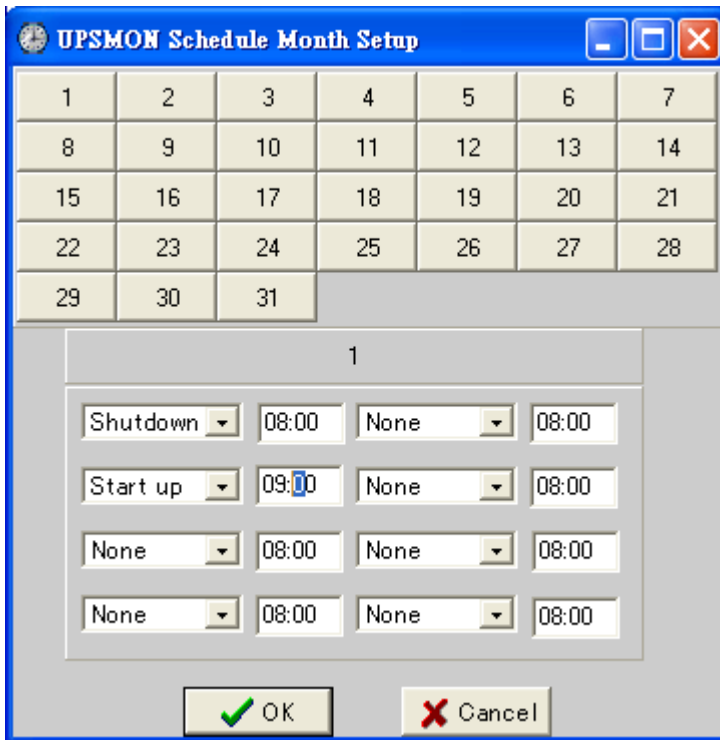
NOTE: A shutdown must be scheduled before a start up can be scheduled.

To schedule an UPSMON-Plus event:

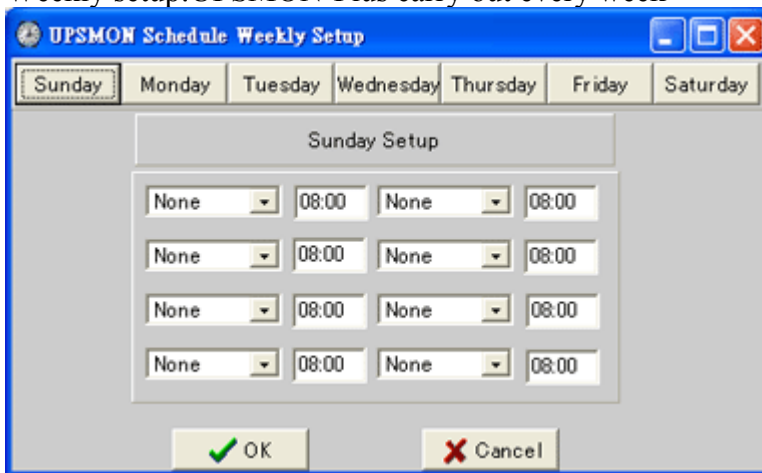
1. Click the Schedule button on the main window of the UPSMON-Plus.
2. There are 5 choices can be scheduled : **UPS shutdown** and **start up**, **Beeper on** or **off**, **battery self test**. However the UPS shutdown have to be set time earlier than start up.
3. Select the below time options that you want to make the schedule.



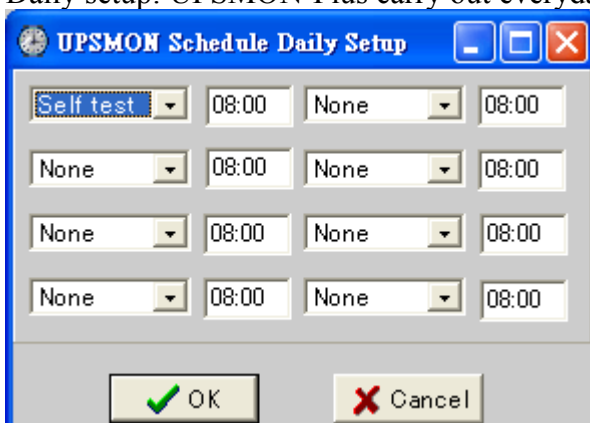
4. Month setup : UPSMON-Plus carry out every month



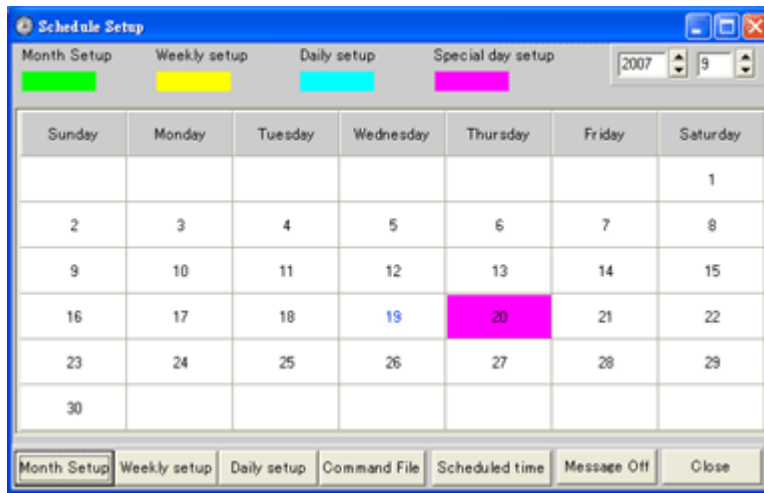
5. Weekly setup: UPSMON-Plus carry out every week



6. Daily setup: UPSMON-Plus carry out everyday



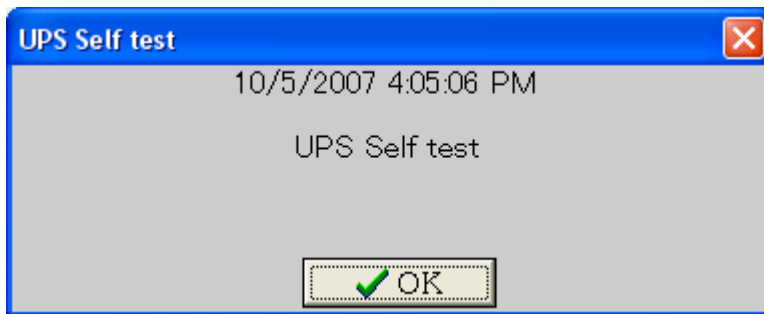
7. Your scheduled event appears on the calendar window.



UPSMON-Plus self test

It is important to perform periodic self tests to assure that the UPS is working properly to protect your PC and connected peripheral devices. You can schedule self tests by clicking the Schedule button in the main window.

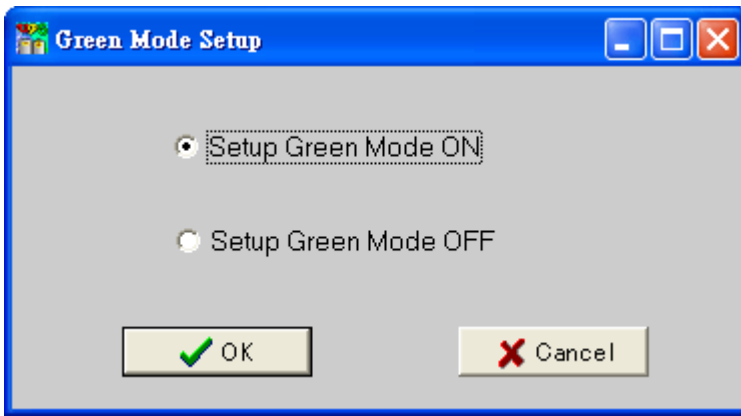
You can also perform a manual battery self test, by pressing the Test button on the front of the UPSMON-Plus. When a successful test is complete, the following message displays:



UPSMON-Plus Green Mode

While the UPS is discharging with zero load : To save the battery capacity, the UPS will automatically turn the output voltage off in a period of time. Then the output voltage will not turn on until the utility is restored.

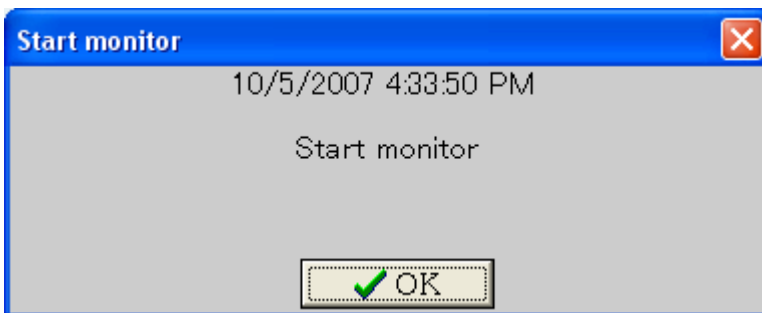
- Setup Green Mode ON : Enable this function to support the Green Mode.
- Setup Green Mode OFF : Disable this function.



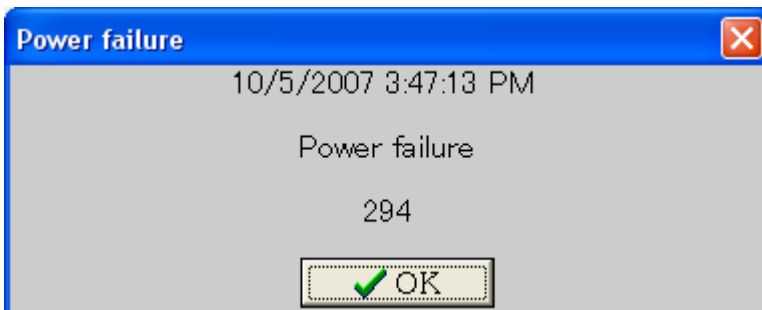
NOTE: Some types of the UPS does not provide this function.

Launching the software message

Whenever you launch the UPSMON-Plus, a Start monitor message is displayed. Click OK to begin configuring the software with your system.



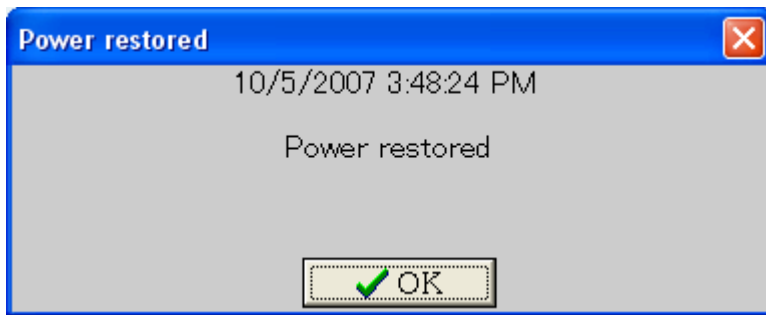
Power Failure messages



When there is a blackout, the UPS switches to battery mode. The UPS supplies power to the system and then shuts down the system after a determined amount of minutes that was set in the System Configuration window. However, if the battery level drops down to 30%, a Low Battery alert appears. When a Low Battery alert appears, the PC starts to shut down after 10 seconds.

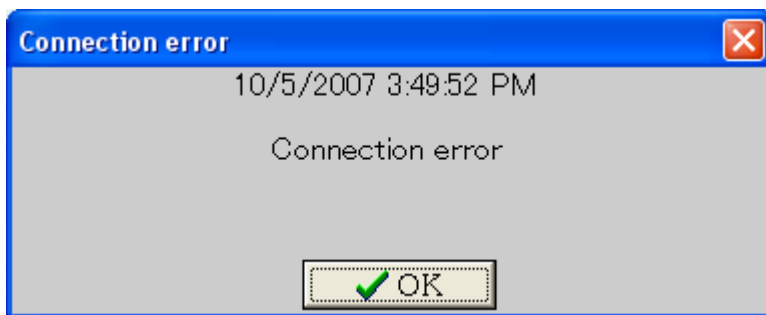
Power Restored messages

When power is restored, the following message displays:



Connection Error messages

When the connection between the PC and UPS is lost, the following message displays:



Setting up the PC BIOS to enable PC startup

Your PC BIOS has to be set up to a Power On state, then it could support the UPSMON-UPS to control PC startups. Basically, you need to enter the PC BIOS Setup screen and then select the Power On setting to be the default.

To change your BIOS setting:

1. Restart your PC.
2. When the PC brand logo screen appears, press the correct key on your keyboard to enter the BIOS Setup window. For general PCs, press the **delete** key.
3. Use your arrow keys on the keyboard to select the correct power option.
4. Select the correct setting to enable PC power always on. For general PCs, use your arrow keys to **enable** "Restore on AC Power Loss".
5. Save your changes.

NOTE: Each PC varies in how to enter and make changes to the BIOS settings.
