

# Equipment Management

- Reduce errors and increase efficiency with electronic procedures.
- Access information required for cGMP compliance.
- Enable electronic signatures and approvals.



*Manage equipment use, status, maintenance, and calibration electronically.*

## Overview

The Syncade Equipment Management module extends plant floor automation by managing equipment use, status, maintenance, and calibration records. You can easily schedule, assign, track, and report all equipment information necessary to meet your compliance requirements, as well as support your asset management strategy.

The Equipment Management module provides point-of-need verification through wireless handheld devices. It also can improve the efficiency of equipment-related activities, including asset management, calibration, and equipment cleaning.

The module delivers the equipment-related information needed to generate an electronic batch record and supports the vision of a paperless manufacturing facility. For those industries under cGXP regulations, Syncade is fully compliant with all cGXP regulations, including 21 CFR Part 11.

## Efficient Equipment Tracking

**Automate Record-Keeping.** The Equipment Management module automates cleaning, maintenance, and calibration equipment management records. It streamlines the time-consuming nature of manual recording-keeping, including the hassle of finding a pen and the frustration of paper sign-offs. You can enable quick review and approval of equipment status, as well as implement electronic signature verification and approval.

**Increase Information Visibility.** Quickly access the equipment information needed to meet your facility requirements. You can track and manage information related to building, suite, and equipment properties and events, such as usage, cleaning, repair, preventive maintenance, validation, and calibration.

**Reduce Process Errors.** Verify equipment status in real-time to ensure equipment or rooms are used only if in the proper state.

**Know Equipment Availability.** Always know which equipment is available and ready for use.

Maintenance and calibration workers can record information in real time, saving valuable time and ensuring record accuracy. Management has a complete view of the operating efficiency of your assets.

**Prevent Deviations.** The Equipment Management module helps you prevent deviations related to using incorrect equipment. It reduces the time needed to determine whether the equipment is in the correct state. It can also reduce the resources required to perform QA checks.

**Simplify Validation.** As a zero-client, web-based solution, you can quickly install, validate and deploy the module from a centralized server. Whether tracking hundreds or thousands of instruments and pieces of equipment, you'll be amazed at how quickly and easily you can ensure that all your asset management and regulatory needs are met.

## Complete Solution

The Equipment Management module delivers building, suite, and equipment information organized logically for quick access. Multiple views of events, activities and status information allow

production planning and scheduling to be completed more efficiently. Define and configure equipment states to meet the needs of your facility.

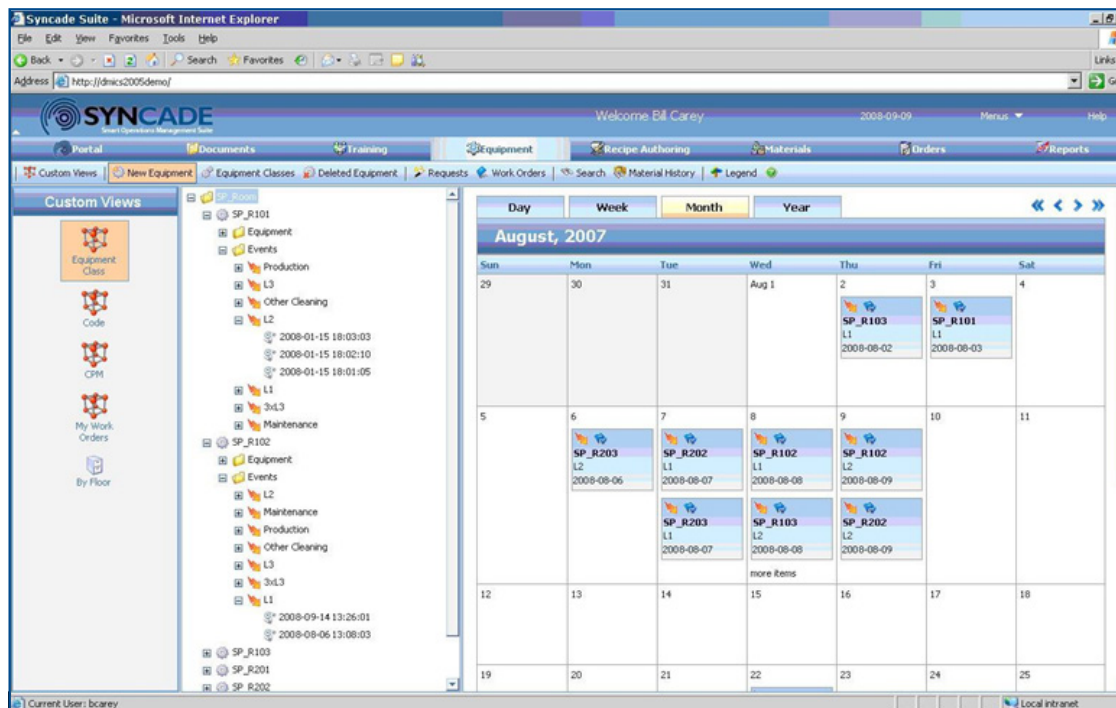
Rules-based workflow enables work instructions to be defined and consistently followed. Operators have guidance to perform equipment event. The Equipment Management module collects, reports, and maintains all required data for complete traceability of equipment, room usage, instrument calibrations, and shift change reports. Paperless calibration, using wireless handheld devices, enables calibrators to record data at the point of work.

## Bundled License Packages

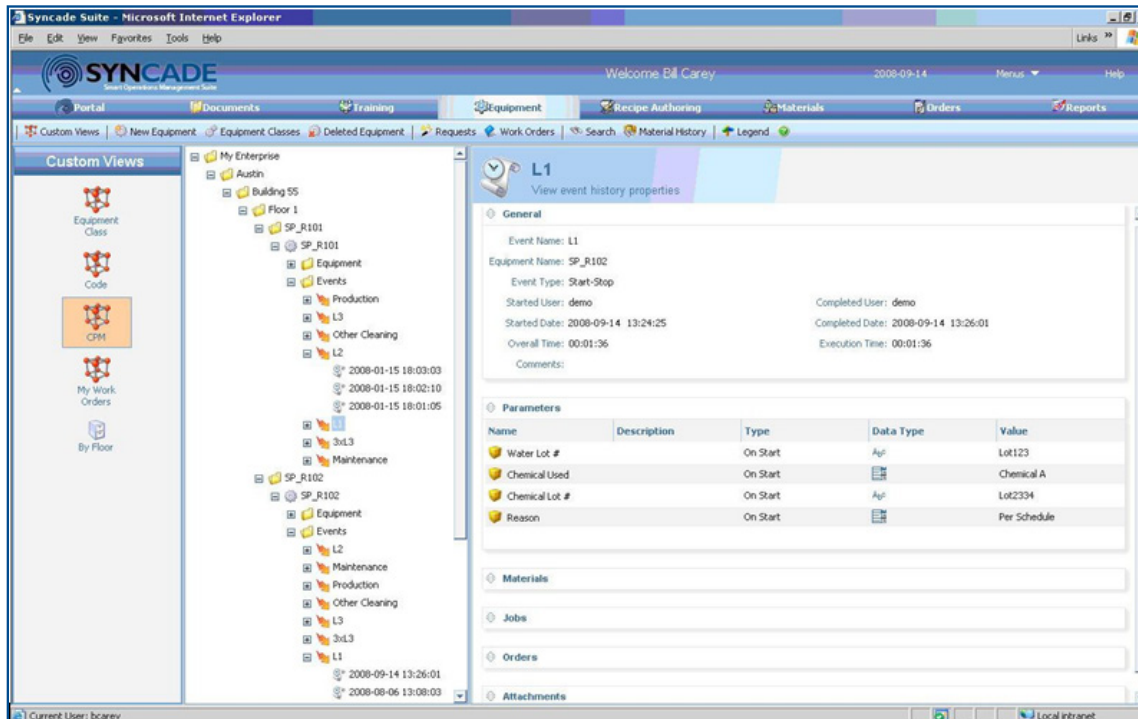
There are two bundled license packages available for Equipment Management applications:

**Professional bundle** contains one production server license and two non-production server licenses for the Syncade modules. This bundle supports up to 125 named users and 5 Recipe Author licenses. It also includes an SAP Crystal Reports Runtime license and an ActivePDF Toolkit OEM license.

**Experience bundle** contains one production server license and two non-production server licenses for the Syncade modules.



The calendar view displays scheduled events and upcoming calibrations due.



Easily track the current status of equipment in the facility.

This bundle supports up to 50 named users and 1 Recipe Author license. It also includes an SAP Crystal Reports Runtime license and an ActivePDF Toolkit OEM license.

### General System Requirements

A server-class PC with Internet Explorer is needed to support the Syncade solution. Microsoft SQL Server is the underlying database. For client access, a PC with Internet Explorer is needed. Please consult the factory for additional details regarding hardware requirements and software versions.

### Ordering Information

Description	Model Number
Equipment Management Experience	SYOM1002ELE
Equipment Management Professional	SYOM1002ELP
Additional User Scale-Ups	SYOMUPSUSxxxx

Where xxxx represents the number of additional named users required. User additions can be ordered in quantities of 5, 25, 50, 100, 150, 200, 250, 300, 400, 500, 700, 1000, and 2000.

**Emerson Process Management**

Asia Pacific: 65.6777.8211

Europe, Middle East: 41.41.768.6111

North America, Latin America:

+1 800.833.8314 or

+1 512.832.3774

[www.emersonprocess.com/syncade](http://www.emersonprocess.com/syncade)

©2015, Emerson Process Management. All rights reserved.

The Emerson logo is a trademark and service mark of Emerson Electric Co. The Syncade logo is a mark of one of the Emerson Process Management family of companies. All other marks are the property of their respective owners.

The contents of this publication are presented for informational purposes only, and while every effort has been made to ensure their accuracy, they are not to be construed as warranties or guarantees, express or implied, regarding the products or services described herein or their use or applicability. All sales are governed by our terms and conditions, which are available on request. We reserve the right to modify or improve the designs or specifications of our products at any time without notice.

