

# Rosemount SWF 5912

## Custody Transfer Flexible Cargo Report

The flexible cargo report system for Rosemount CTS enables custody transfer reports to be configured for different Buyer/Seller contracts with customized calculation settings and report layouts.

- Select different calculation settings and report layouts for different terminals
- Make vessel attractive for short-term chartering
- Totally adaptable to Seller and Purchase Agreement requirements

## Description

Traditionally, the LNG trades have been long fixed charters with one and the same Sales and Purchase Agreement (SPA) valid for all voyages. The custody transfer report format once set up for the new built vessel was almost never changed. Today an increasing number of trades have shifted to the spot market, more LNG vessels are facing either different SPA from time to time, or even different SPA from loading to discharge port on the same voyage.

The Flexible Cargo Report System enhances the basic CTS report generation function of the Rosemount CTS workstation software with additional features:

### Allow different calculations setups for the cargo reports

New report settings can be created and tailored to fit specific needs by operator. For example, you can set the number of decimals to be used for different parameters in the presented report, or decide how average temperatures shall be calculated.

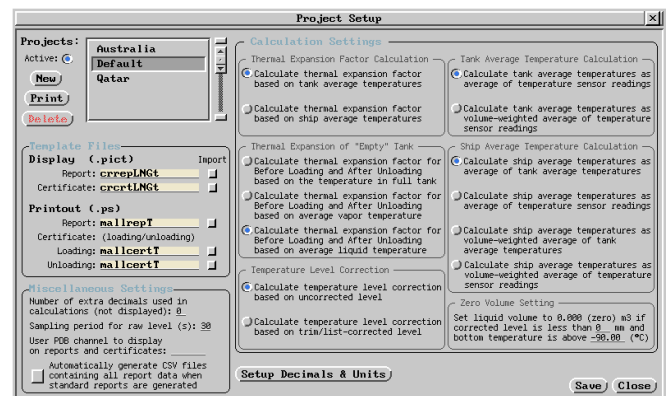
### Zero Volume indication

Enter conditions for when a cargo tank shall be considered empty and volume be presented as 0.000 m<sup>3</sup> on reports.

### Exclude an empty tank from the CTS calculations

Useful for vessels performing voyages with one or several tanks empty. The excluded tanks are not used in ship average temperature or total volume calculations.

Rosemount CTS		CUSTODY TRANSFER DATA						
BEFORE UNLOADING								
SHIPNAME	LNG/C Duratus							
DATE (DDMMYYYY)	29/12/2015							
TIME (HHMM)	18:15							
PORT NAME	Ras Laffan							
VOYAGE NO.	EMR-2015-023-A							
CARGO/CHIEF OFFICER	A. Brown							
TRIM	0.24	m	BY HEAD					
LIST	1.15	°	STARBOARD					
AVERAGE TEMP. LIQUID	-160.0	°C						
AVERAGE TEMP. VAPOUR	-159.1	°C						
AVG. PRESS.VAPOUR	1045	mbar(a)						
		TANK1	TANK2	TANK3	TANK4			
LEVEL MEASUREMENT (m)								
NO.1	25.442	24.456	23.897	25.543				
NO.2	25.442	24.456	23.897	25.543				
NO.3	25.442	24.456	23.897	25.543				
NO.4	25.442	24.456	23.897	25.543				
NO.5	25.442	24.456	23.897	25.543				
AVERAGE LEVEL (m)	25.442	24.456	23.897	25.543				
TRIM CORRECTION (m)	-0.001	-0.001	-0.001	-0.001				
LIST CORRECTION (m)	-0.006	-0.003	-0.006	-0.003				
TEMP CORRECTION (m)	0.003	0.001	0.005	0.000				
CORRECTED LEVEL (m)	25.438	24.453	23.895	25.539				
TEMPERATURE (°C)								
T6	-158.2	V	-156.2	V	-159.3	V	-158.5	V
T5	-158.2	L	-156.2	L	-159.3	L	-158.5	L
T4	-160.3	L	-160.1	L	-160.2	L	-159.2	L
T3	-160.5	L	-160.2	L	-160.4	L	-159.1	L
T2	-160.0	L	-160.5	L	-160.1	L	-159.5	L
T1	-160.3	L	-160.8	L	-160.1	L	-159.0	L
AVG. VAPOUR TEMP. (°C)	-158.2		-156.2		-159.3		-158.5	
AVG. LIQUID TEMP. (°C)	-160.3		-160.4		-160.2		-159.2	
VAPOUR PRESS. (mbar(a))	1055		1040		1025		1020	
UNCORRECTED VOLUME (m <sup>3</sup> )	12,280,093	11,986,234	11,985,902	6,023,878				
TEMP CORRECTION FACTOR	0.99999	0.99999	0.99999	1.00003				
CORRECTED VOLUME (m <sup>3</sup> )	12,279,970	11,986,114	11,985,782	6,024,057				
VOLUME SUMMED (m <sup>3</sup> )	42,275,923	A						
COMPANY		NAME						
SHIPS MASTER								
BUYER(S)								
SELLER(S)								
SURVEYOR								



## Related Products

The cargo report system can be enhanced with a variety of other optional features. For detailed information about the following functions, refer to the appropriate data sheet:

- Rosemount SWF 5913 Offshore Filtering. Provides level measurement stabilization during vessel motion
- Rosemount SWF 5920 Gas Flow Metering. Provides integration of gas flow metering into the CTS system
- Rosemount SWF 5924 CTS Report File Transfer. Allows CSV files with CTS report data to be transferred to other systems
- Rosemount SWF 5929 CTS Remote Control. Allows the CTS report system to be remotely operated from another system

©2016 Emerson. All rights reserved.

The Emerson logo is a trademark and service mark of Emerson Electric Co. Rosemount and the Rosemount logotype are registered trademarks of Rosemount Inc. TankRadar is a trademark of Rosemount Tank Radar AB. Rosemount Tank Radar AB is a member of the Emerson family of companies. All other marks are the property of their respective owners.

### **Emerson Automation Solutions**

Rosemount Tank Radar AB  
Box 150  
SE-435 23 Mölnlycke  
T +46 31 337 00 00  
F +46 31 25 30 22

[www.Emerson.com/marine](http://www.Emerson.com/marine)

The contents of this publication are presented for information purposes only, and while effort has been made to ensure their accuracy, they are not to be construed as warranties or guarantees, expressed or implied, regarding the products or services described herein or their use or applicability. Standard Terms and Conditions of Sale can be issued by contacting Rosemount Tank Radar AB. We reserve the right to modify or improve the designs and specifications of our products at any time without notice. Rosemount Tank Radar AB accepts no responsibility for any errors that may appear in this publication.

