

Rosemount SWF 5210

Workstation Software for Rosemount CMS

The Rosemount CMS workstation software provides customized intuitive mimics and functions tailored to fit each specific vessel.

- The workstation provides you with a clear overview of all cargo tank measurements
- Alarm handling with user-defined alarm limits enables optimization of cargo operations
- Customized mimics for each vessel enhances ease-of-use
- Can be tailored to specific requirements with a variety of optional features

Description

The Rosemount CMS workstation includes standard software and customized mimics for monitoring of tank ullages, temperatures, vapor pressures and all other data handled by the Rosemount CMS sensors.

The software is based on the QNX real-time operating system, ensuring reliability and security.

Clean graphical overview

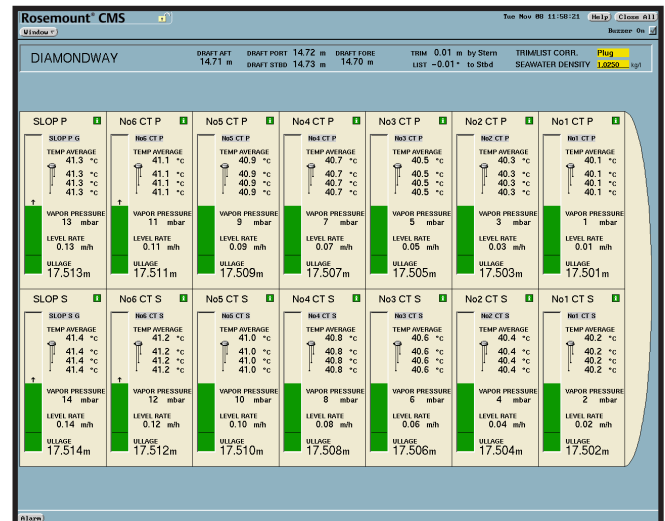
With mimics customized to each specific vessel, the data you need is always presented in a clear and intuitive way.

Powerful alarm handling

The software provides user-configurable alarm limits with blocking and override features. Along with alarms for failures in system components and an event log, this gives a clear indication of any abnormal situation.

User-defined display groups and trends

As an operator, you can create your own custom groupings of measurement data as well as real-time trends in order to focus on the most important information.



Related Products

The workstation software can be enhanced with a variety of optional features. For detailed information about the following functions, refer to the appropriate data sheet:

- Rosemount SWF 5915 Tank Cleaning Surveillance. Provides monitoring and reporting of tank cleaning machines
- Rosemount SWF 5913 Offshore Filtering. Provides level measurement stabilization during vessel motion
- Rosemount SWF 5916 Communication Protocols. Allows easy integration with other systems onboard, using industry-standard protocols
- Rosemount SWF 5928/29/30/31 Time Synchronization. Keeps the workstation date & time synchronized with the ship's master clock
- Rosemount SWF 5935 Cargo Report System. Provides calculated cargo quantity reports based on detailed tank tables

©2016 Emerson. All rights reserved.

The Emerson logo is a trademark and service mark of Emerson Electric Co. Rosemount and the Rosemount logotype are registered trademarks of Rosemount Inc. TankRadar is a trademark of Rosemount Tank Radar AB. Rosemount Tank Radar AB is a member of the Emerson family of companies. All other marks are the property of their respective owners.

Emerson Automation Solutions

Rosemount Tank Radar AB
Box 150
SE-435 23 Mölnlycke
T +46 31 337 00 00
F +46 31 25 30 22

www.Emerson.com/marine

The contents of this publication are presented for information purposes only, and while effort has been made to ensure their accuracy, they are not to be construed as warranties or guarantees, expressed or implied, regarding the products or services described herein or their use or applicability. Standard Terms and Conditions of Sale can be issued by contacting Rosemount Tank Radar AB. We reserve the right to modify or improve the designs and specifications of our products at any time without notice. Rosemount Tank Radar AB accepts no responsibility for any errors that may appear in this publication.

