

# Wireless Interface

- Identify and access devices with an interface to the Smart Wireless Gateway.
- Access stranded diagnostics through the Smart Wireless THUM™ Adapter.
- Identify and troubleshoot critical device alerts.
- Expand the value of AMS Device Manager to new areas of your plant.



*AMS Device Manager gives you easy access to HART, FOUNDATION fieldbus, and WirelessHART devices, all in a single application.*

## Access More Plant Diagnostics with Lower Costs

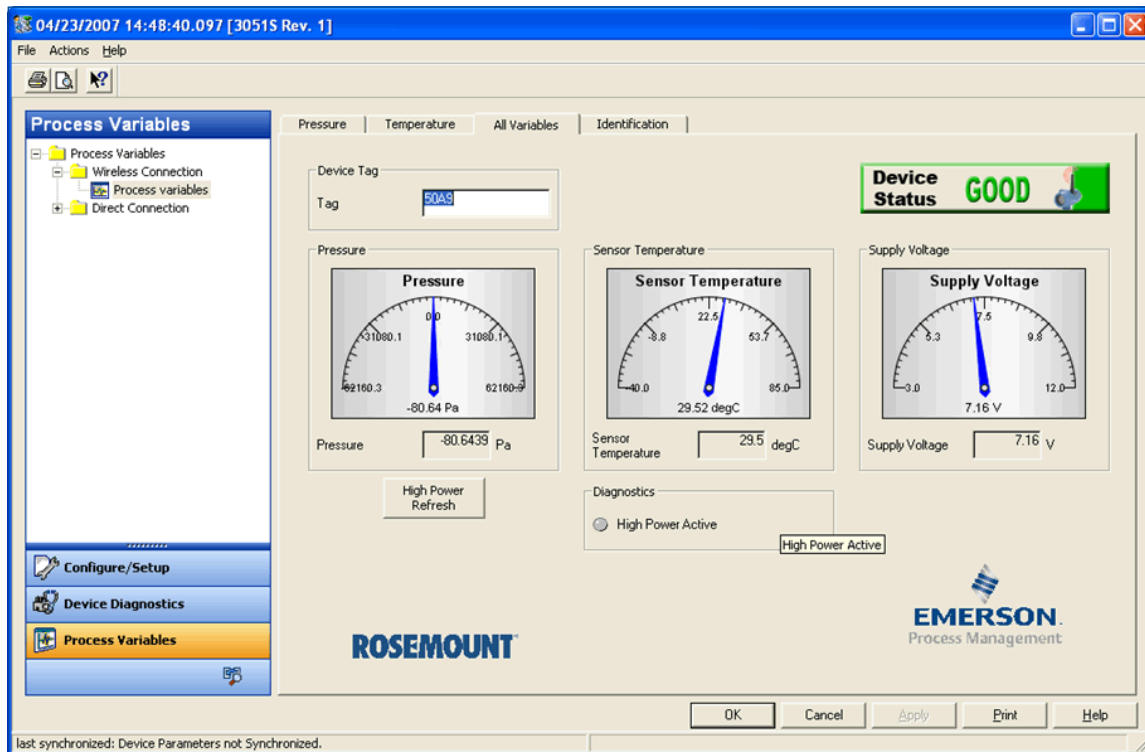
The AMS Device Manager Wireless Interface gives you easy access to your IEC 62591 (WirelessHART™) devices via the Smart Wireless Gateway. Use AMS Device Manager to configure, calibrate, diagnose, and document device activities in one location, while managing your HART®, FOUNDATION™ fieldbus, and WirelessHART devices in a single application. With the Wireless Interface, you get a cost-effective solution for remote configuration and diagnostics without the additional costs of multiplexer installation and wiring.

## Communicate with Inaccessible Assets

The Wireless Interface helps you get more out of your intelligent wireless field devices through an online AMS Device Manager system. With AMS Device Manager, you can quickly check the health of a connected WirelessHART device using the diagnostics and monitoring capabilities. The Alert Monitor summary screen provides an overview of all device alerts and lets you access additional device information for more details.

AMS Device Manager makes configuration of wireless devices fast and easy. Use configuration management to change, store, compare, and transfer device configurations without ever going into the field. Streamline calibration by defining device test schemes, scheduling device calibration, and managing device calibration data.

Simplify documentation around device tasks with the Audit Trail. In addition, manual entries can be created to document events that may not be automatically captured.



AMS Device Manager's enhanced graphical interface provides clear indications of device status and process variables, extending the benefits of PlantWeb® to WirelessHART devices.

## Access Stranded Diagnostics

The Smart Wireless THUM Adapter enables you to easily communicate predictive diagnostics to AMS Device Manager from stranded HART devices in your plant.

You can retrofit the THUM adapter to any existing two or four-wire HART device and wirelessly transmit measurement and diagnostic information.

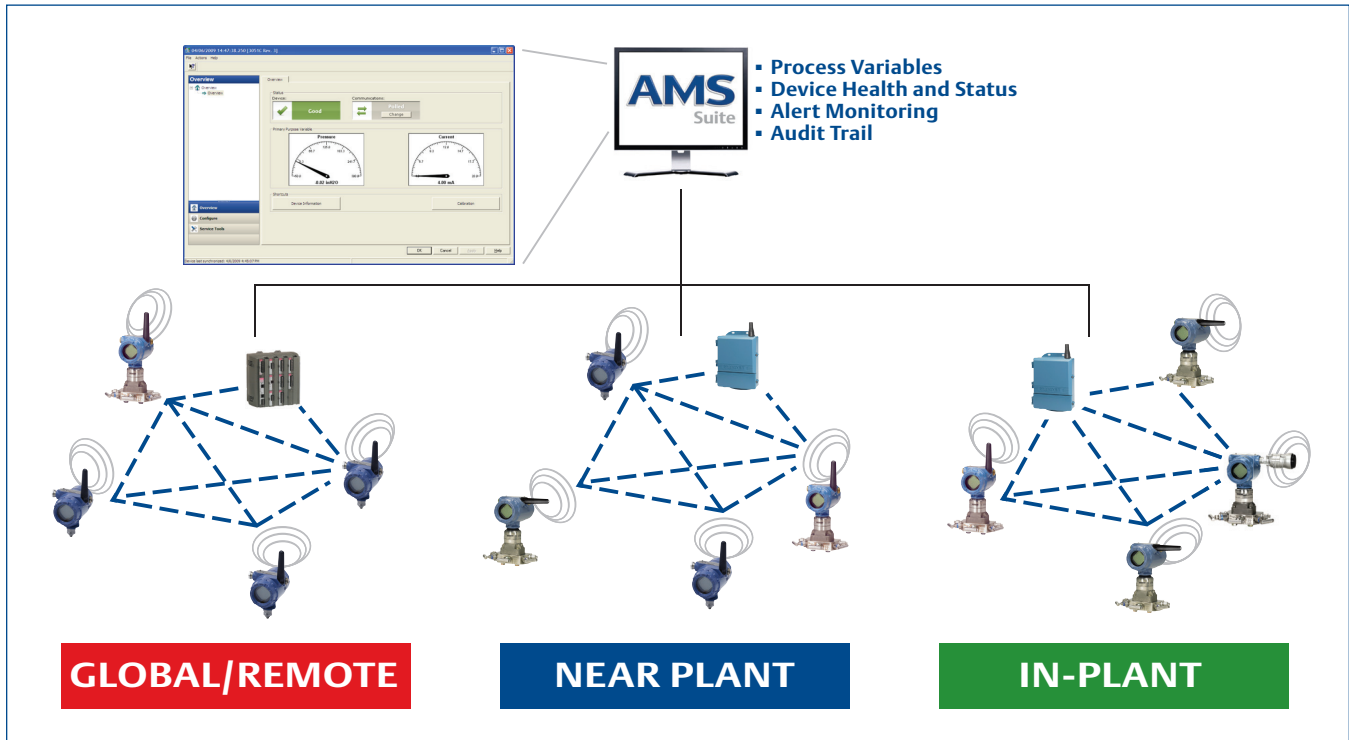
You will be able to see the health and performance of new areas of your plant, helping you improve availability.

## Interface Architecture

The Wireless Interface for AMS Device Manager supports the Smart Wireless Gateway and devices connected to it. Configuration is quick and easy, and SmartStart™ Services are available to help you get started.

## Real-Time Remote Diagnostics

Wireless technology also lets you access diagnostics from your most remote devices. Through the OpenEnterprise System Interface, you can use AMS Device Manager to view, configure, and diagnose WirelessHART devices connected to a IEC62591 Wireless Interface Cards installed in ROC800, FlosBoss107, or ControlWave RTUs. network. With real-time diagnostic information, you can eliminate unnecessary and expensive trips to the field and make sure your maintenance personnel know what the problem is and have the tools to correct it when they do make a trip. You can also reduce downtime by troubleshooting small problems from your control room before they become big ones in the field.



Use AMS Device Manager to communicate with all your devices, regardless of where they are located.

## Communicate with Your Near-Plant Assets

Monitoring near-plant assets has always been a challenge. Physical distance and barriers such as rivers and highways make wired connections expensive to install and difficult to maintain.

Wireless technology provides a cost-effective way to automate near-plant applications. Using the Smart Wireless Gateway, you can easily connect your control room and AMS Device Manager to your near-plant assets for configuration and alarms. You can reduce unnecessary “equipment check” trips through the availability of these remote diagnostics.

## Reach New Areas in Your Plant

Overcome economic and technical barriers in your plant by using wireless technology and the THUM adapter to reach areas that were too expensive or difficult to monitor using wired connections. With more real-time data, you can increase process uptime, improve consistency, and detect emissions more quickly. Use AMS Device Manager for configuration, calibration, and documentation of all your in-plant assets, wireless and wired, to improve maintenance efficiency.

## SmartStart Services

To ensure that you are ready to operate the network after it is installed, Emerson provides on-the-job training in network fundamentals, basic operation, and troubleshooting.

As a part of SmartStart Services, our technicians will provide training on how to use the equipment correctly, perform routine maintenance, and diagnose and resolve potential issues. SmartStart Services ensure that your wireless start-up is as smooth and efficient as possible.

## AMS Wireless SNAP-ON™ Application

Use the AMS Wireless SNAP-ON application to plan and validate your wireless networks. You can drag-and-drop devices on your plant layout and then check your design against recommended best practices.

Once your network is live, easily manage communication and diagnostic data using the same planning diagram.

**Emerson Process Management**  
**Reliability Solutions**  
12001 Technology Drive  
Eden Prairie, MN 55344 USA  
T 1(952) 828-3633  
F 1(952) 828-3006  
[www.emersonprocess.com/ams](http://www.emersonprocess.com/ams)

©2015, Emerson Process Management. All rights reserved.

The Emerson logo is a trademark and service mark of Emerson Electric Co. The AMS logo is mark of one of the Emerson Process Management family of companies. All other marks are the property of their respective owners.

The contents of this publication are presented for informational purposes only, and while every effort has been made to ensure their accuracy, they are not to be construed as warranties or guarantees, expressed or implied, regarding the products or services described herein or their use of applicability. All sales are governed by our terms and conditions, which are available on request. We reserve the right to modify or improve the designs or specifications of our products at any time without notice.

