

# CSI 2130 Machinery Health Analyzer Web Communication Installation

---

---

© 2011 Emerson Process Management. All rights reserved. The contents of this publication are presented for informational purposes only, and while effort has been made to ensure their accuracy, they are not to be construed as warranties or guarantees, express or implied, regarding the products or services described herein or their use or applicability. All sales are governed by our terms and conditions, which are available on request. We reserve the right to modify or improve the designs or specifications of our products at any time without notice.

## Steps to Installing Web Communications for Remote Analysis

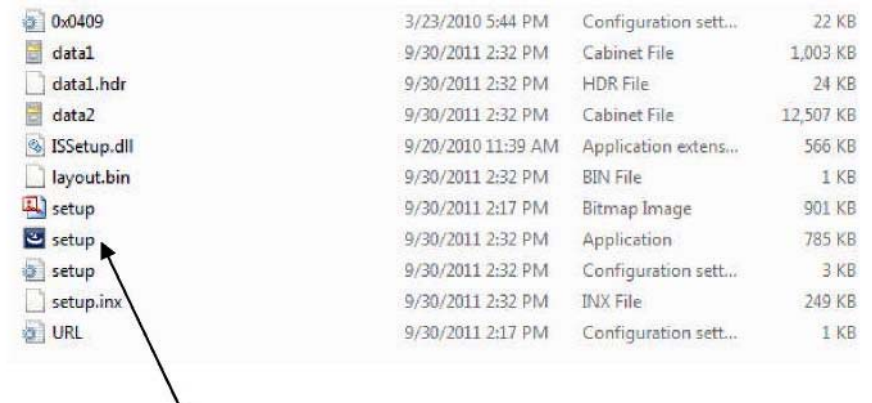
### Step 1:

Extract files from the zip file provided and open the 2130 Web Communications folder.

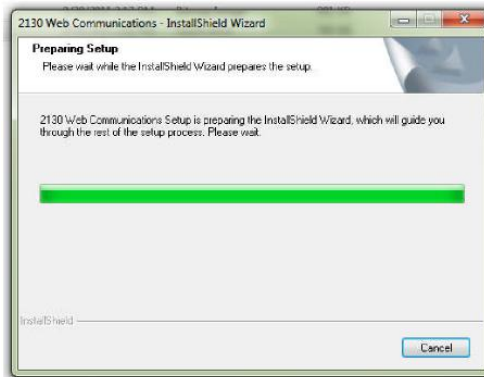


### Step 2:

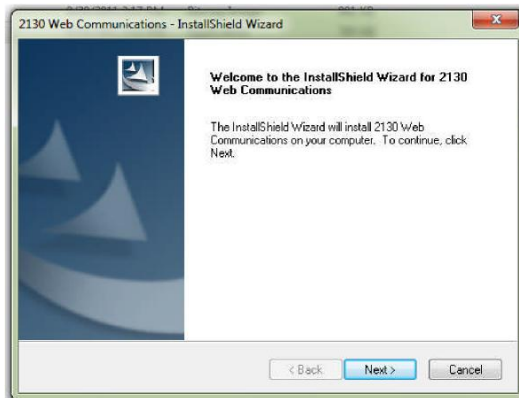
Click on the Setup application.



The application will load and launch the InstallShield Wizard.



Click Next.



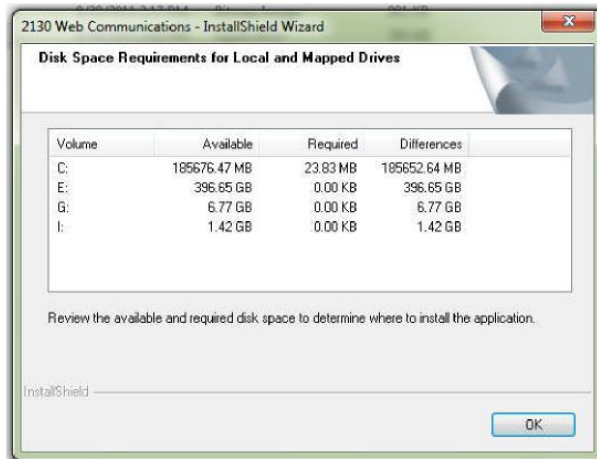
**Step 3:**

Accept the terms.



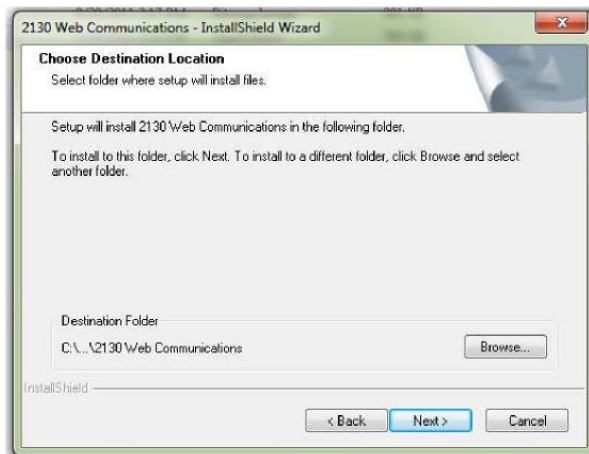
**Step 4:**

Check for sufficient disk space and click OK.



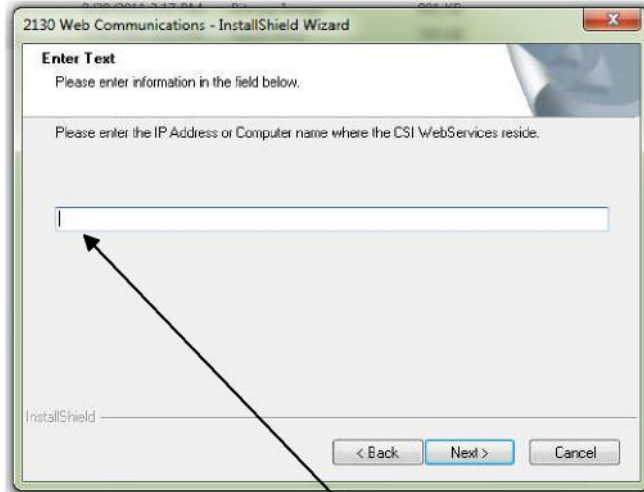
**Step 5:**

Click Next.

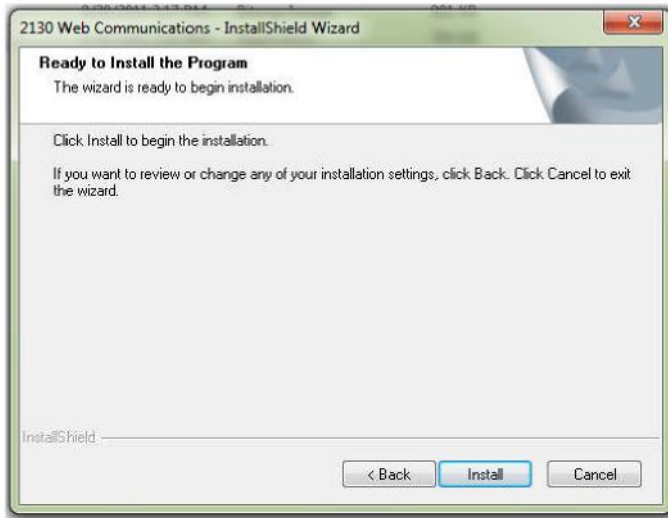


**Step 6:**

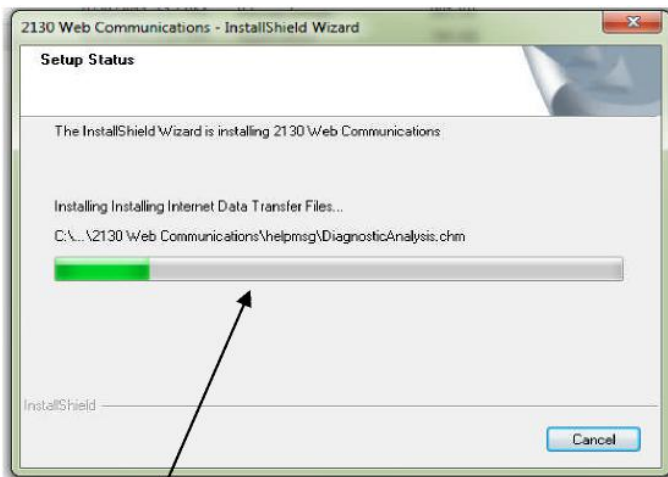
Type in the Remote Analysis  
Server IP Address  
65.218.164.190 and click Next.



Click Install.

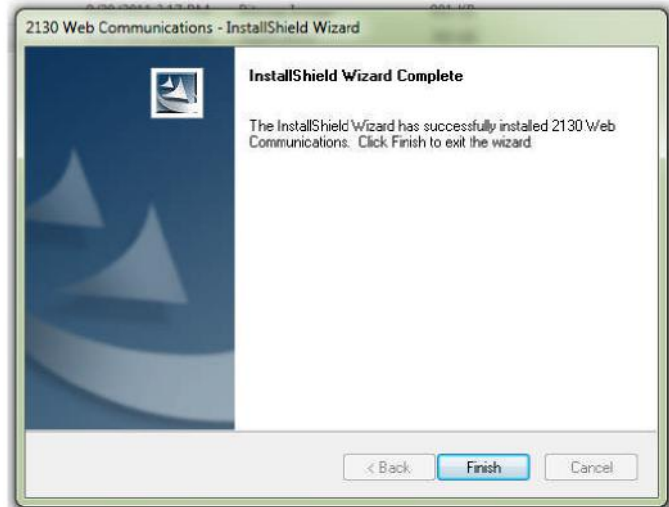


The program is now installing.



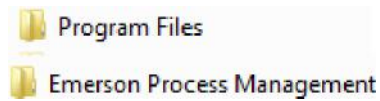
**Step 7:**

The program is now installed.



**Step 8:**

In the Program Files folder on the C:\ drive, open the Emerson Process Management folder.



You will find the folders shown to the right.



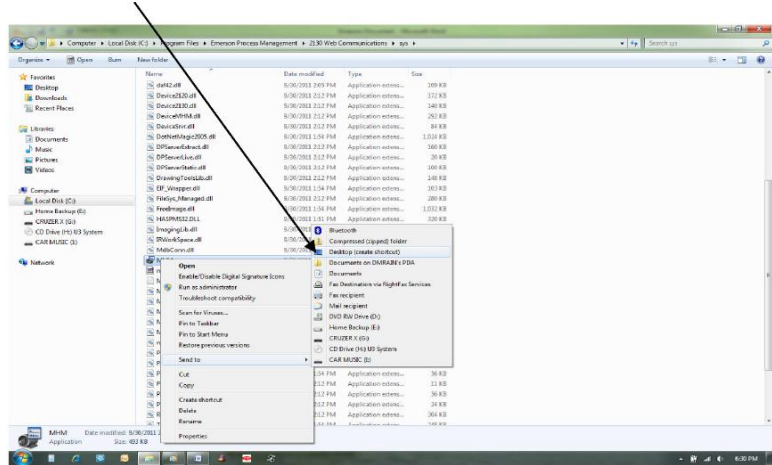
Open the 2130 Web Communications folder.



Open the Sys folder and scroll down until you find the MHM icon.

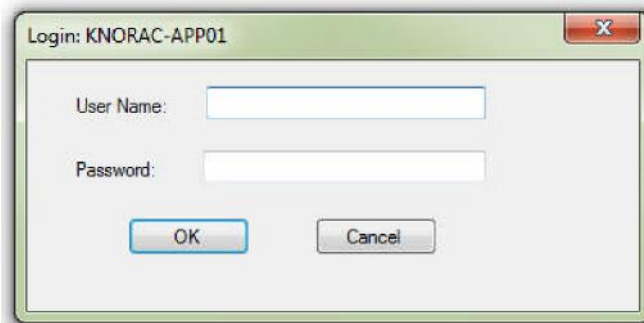


Right click on the icon and send it to the desktop.



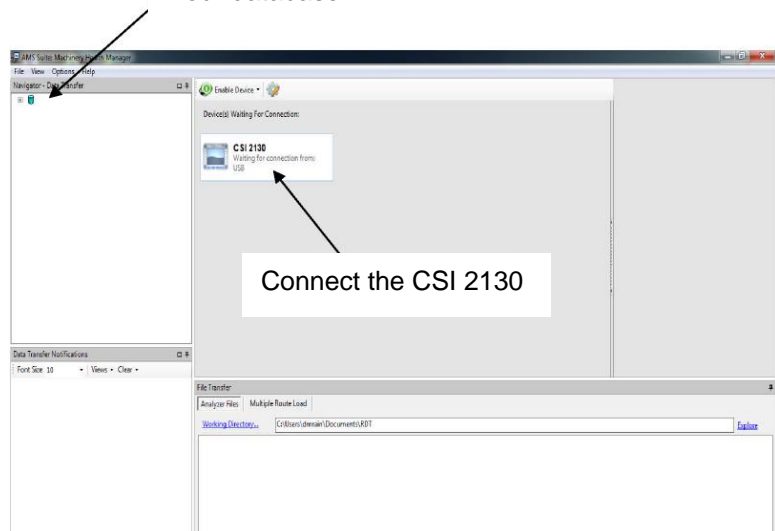
**Step 9:**

Click on the desktop icon to open the login screen. Enter your user name and password.



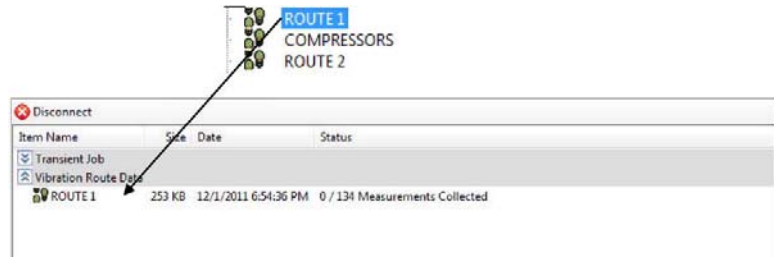
Your database

Select your database and connect the CSI 2130.



**Step 10:**

Drag the route over to the CSI 2130. The route is now loaded and ready for data collection.



This version of the 2130 Web Communications Application is compatible with:

Windows XP Professional SP2 & SP3  
Windows Vista Business SP2  
Vista Ultimate SP2  
Vista Enterprise SP2\*  
Windows 7 Professional  
Windows 7 Ultimate  
Windows 7 Enterprise

\*Both 32- and 64-bit.