

SMART WIRELESS THUM™ ADAPTER

ROSEMOUNT® 3051S ADVANCED DIAGNOSTICS

WirelessHART

Gain insight with advanced process diagnostics

Enhance quality and improve productivity with Rosemount 3051S Advanced Diagnostics. Measure and log statistical process characteristics to proactively monitor, detect and alert you to abnormal conditions.

The Smart Wireless THUM adapter is an easy way to unleash otherwise “stranded” advanced diagnostics, such as statistical process analysis and data logging, to allow you to prevent abnormal situations and increase plant productivity.



The Rosemount 3051 with the Smart Wireless THUM adapter powers the PlantWeb digital plant architecture by delivering more advanced field intelligence for better decision-making to help you achieve unparalleled efficiency and productivity.

Access to more comprehensive data enable you to:

- Enhance quality and improve productivity
- Enhance availability with proactive statistical process monitoring and trending
- Detect abnormal conditions before causing a major problem

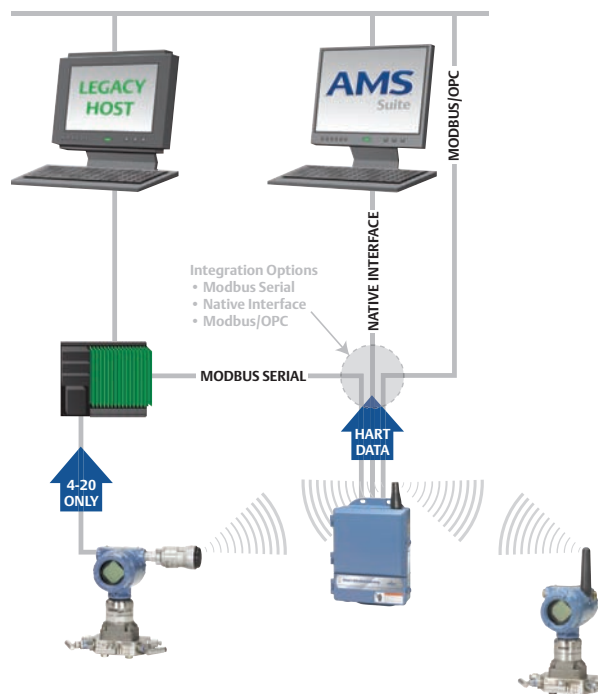
EASY TO USE. EASY TO INTEGRATE.

With the Smart Wireless THUM adapter, you can upgrade existing wired HART devices already installed in your facility to WirelessHART™, gaining wireless access to valuable diagnostic and process data that was previously inaccessible. The THUM will work with existing or new WirelessHART networks – delivering quick and easy access to valuable information.

Industry standard protocols are supported for easy legacy host integration.

AMS® Suite predictive maintenance software helps you to easily plan a secure, reliable wireless network using online tools, while also validating the network against factory-recommended best practices.

Emerson’s Smart Wireless Solutions bring valuable information within reach – easily and cost effectively – delivering better insight into your operation and facility.



Can the THUM deliver statistical process information wirelessly?

Yes, the THUM can provide annunciation of plugged impulse lines, entrained air, and other diagnostic applications configured by the user.

What type of diagnostics information can the THUM deliver?

The 3051S provides both diagnostics alerts and statistical process variables to help you detect abnormal situations which the THUM delivers wirelessly.

Is the wireless update rate fast enough for statistical process analysis?

Since statistical process analysis is done inside the 3051S pressure transmitter, the wireless update rate will not affect diagnostics detection.

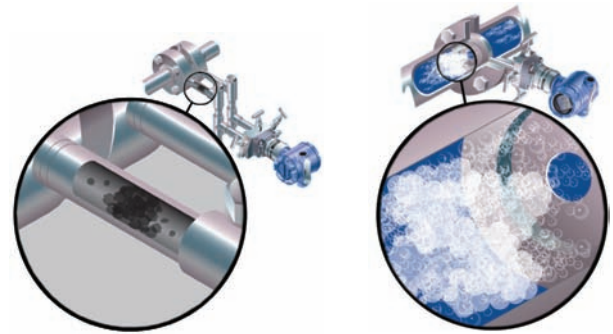
ROSEMOUNT®


EMERSON™
Process Management

BETTER INFORMATION FOR IMPROVED PERFORMANCE

The Smart Wireless THUM Adapter can transmit up to four variables and additional HART status information at the user configurable update rate. Access to this new information enables you to more fully optimize your operations for improved performance.

- | | |
|---|-------------------------------------|
| Selectable PV, SV, and TV Variable | Important Status Information |
| Pressure | Hi/Low Variation Change |
| Module Temperature | Mean Change |
| Scaled Variable | Device Alerts |
| Standard Deviation | Process Alerts |
| Mean | |



Plugged impulse line and entrained air application examples.

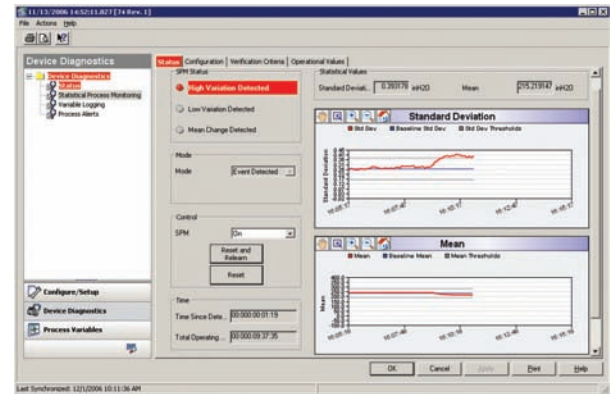
USER CONFIGURABLE INFORMATION

The THUM can also be configured to give device specific information, such as:

- Time outside pressure sensor and module temperature limits
- Min/Max pressure and temperature
- Time since process alert

TECHNICAL REQUIREMENTS

- Voltage drop across THUM: 2.25 Volts at 3.5 mA; 1 Volt at 25 mA
 Loop resistance required: 250 Ohms
 Power requirements: 14.5 Volts
 THUM update rate: 16 seconds to 60 minutes



Statistical process monitoring technology proactively monitors process characteristics to detect and alert you to abnormal situations.

©2009 Emerson Process Management. All rights reserved.

The Emerson logo is a trademark and service mark of Emerson Electric Co. Rosemount and AMS are a marks of one of the Emerson Process Management family of companies. All other marks are property of their respective owners.

The contents of this publication are presented for information purposes only, and while effort has been made to ensure their accuracy, they are not to be construed as warranties or guarantees, express or implied, regarding the products or service described wherein or their use or applicability. All sales are governed by our terms and conditions, which are available on request. We reserve the right to modify or improve the designs or specifications of our products at any time without notice.

**Emerson Process Management
 Rosemount Measurement**
 8200 Market Boulevard
 Chanhassen, MN 55317 USA
 T (USA) +1 800 999 9307
 T (International) +1 952 906 8888
 F +1 952 949 7001

Emerson Process Management
 Blegistrasse 23
 P.O. Box 1046
 CH 6341 Baar
 Switzerland
 T +41 (0) 41 768 6111
 F +41 (0) 41 768 6300

Emerson FZE
 P.O. Box 17033
 Jebel Ali Free Zone
 Dubai UAE
 T +971 4 811 8100
 F +971 4 886 5465

Emerson Process Management Asia Pacific Pte Ltd
 1 Pandan Crescent
 Singapore 128461
 T +65 6777 8211
 F +65 6777 0947
 Service Support Hotline: +65 6770 8711
 E Enquiries@AP.EmersonProcess.com