

Parts List

Part Number- 3-9008-572 Revision A

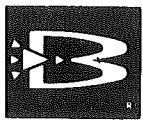
January 2012

Daniel™ Aviation Refueler Surge Pilot Valves

1695 Air Set
1699 Spring Set

DANIEL®


EMERSON™
Process Management



BROOKS[®]
THE MEASURE OF EXCELLENCE

PARTS
LIST

**BROOKS Aviation Refueler
Surge Pilot Valves**

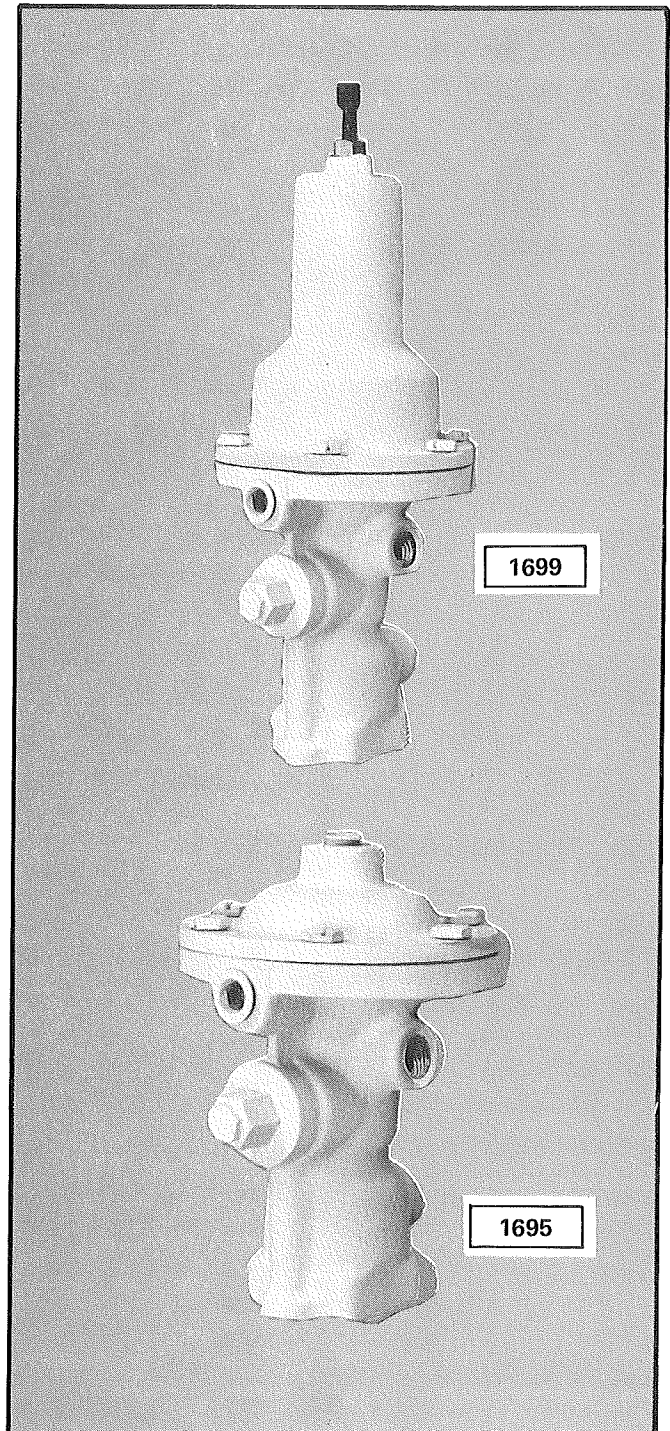
March, 1980
(Supersedes Issue dated April, 1970)

1695 AIR SET
1699 SRING SET

BROOKS - Aviation Refueler
Surge Pilot Valves
are now manufactured by
Daniel™ Measurement and Control Inc.
and are sold under the Daniel brand of
liquid measurement products.



Daniel™ Measurement and Control
11100 Brittmoore Park Drive
Houston, TX 77041 USA



IMPORTANT SAFETY INSTRUCTIONS

Daniel Measurement and Control, Inc. (Daniel) designs, manufactures and tests products to function within specific conditions. Because these products are sophisticated technical instruments, it is important that the owner and operation personnel strictly adhere both to the information printed on the product nameplate and to all instructions provided in this manual prior to installation, operation, and maintenance.

⚠ WARNING

Installing, operating or maintaining a Daniel Product improperly could lead to serious injury or death from explosion or exposure to dangerous substances. To reduce this risk:

- Comply with all information on the product, in this manual, and in any local and national codes that apply to the product.
- Do not allow untrained personnel to work with this product.

Use Daniel parts and work procedures specified in this manual.

Daniel also urges you to integrate this manual into your training and safety program.

BE SURE ALL PERSONNEL READ AND FOLLOW THE INSTRUCTIONS IN THIS MANUAL AND ALL NOTICES AND PRODUCT WARNINGS.

Product owners (Purchasers):

- Use the correct product for the environment and pressures present. See Technical data for limitations. If you are unsure, discuss your needs with your Daniel representative.
- Inform and train all personnel in the proper installation, operation, and maintenance of this product.
- To ensure safe and proper performance, only informed and trained personnel should install, operate, repair and maintain this product.
- Verify that this is the correct instruction manual for your Daniel product. If this is not the correct documentation, contact Daniel at 1-713-827-6314. You may also download the correct manual from:

<http://www.daniel.com>

- Save this instruction manual for future reference.
- If you resell or transfer this product, it is your responsibility to forward this instruction manual along with the product to the new owner or transferee.
- ALWAYS READ AND FOLLOW THE DANIEL™ AVIATION REFUELER SURGE PILOT VALVES PART LIST MANUAL.
- Do not use this equipment for any purpose other than its intended service. This may result in property damage and/or serious personal injury or death.

Product Operation Personnel:

- To prevent personal injury, personnel must follow all instructions of this manual prior to and during operation of the product.
- Follow all warnings, cautions, and notices marked on, and supplied with, this product.
- Verify that this is the correct instruction manual for your Daniel product. If this is not the correct documentation, contact Daniel at 1-713-827-6314. You may also download the correct manual from:

<http://www.daniel.com>

- Read and understand all instructions and operating procedures for this product.
- If you do not understand an instruction, or do not feel comfortable following the instructions, contact your Daniel representative for clarification or assistance.
- Install this product as specified in the INSTALLATION section of this manual per applicable local and national codes.
- Follow all instructions during the installation, operation, and maintenance of this product.
- Connect the product to the proper pressure sources when and where applicable.
- Use only replacement parts specified by Daniel. Unauthorized parts and procedures can affect this product's performance, safety, and invalidate the warranty. "Look-a-like" substitutions may result in deadly fire, explosion, release of toxic substances or improper operation.
- Save this instruction manual for future reference.

Daniel Measurement and Control, Inc.

Daniel™ Aviation Refueler Surge Pilot Valves Parts List

NOTICE

THE CONTENTS OF THIS PUBLICATION ARE PRESENTED FOR INFORMATIONAL PURPOSES ONLY, AND WHILE EVERY EFFORT HAS BEEN MADE TO ENSURE THEIR ACCURACY, THEY ARE NOT TO BE CONSTRUED AS WARRANTIES OR GUARANTEES, EXPRESSED OR IMPLIED, REGARDING THE PRODUCTS OR SERVICES DESCRIBED HEREIN OR THEIR USE OR APPLICABILITY. ALL SALES ARE GOVERNED BY DANIEL'S TERMS AND CONDITIONS, WHICH ARE AVAILABLE UPON REQUEST. WE RESERVE THE RIGHT TO MODIFY OR IMPROVE THE DESIGNS OR SPECIFICATIONS OF SUCH PRODUCTS AT ANY TIME.

DANIEL DOES NOT ASSUME RESPONSIBILITY FOR THE SELECTION, USE OR MAINTENANCE OF ANY PRODUCT. RESPONSIBILITY FOR PROPER SELECTION, USE AND MAINTENANCE OF ANY DANIEL PRODUCT REMAINS SOLELY WITH THE PURCHASER AND END-USER.

TO THE BEST OF DANIEL'S KNOWLEDGE THE INFORMATION HEREIN IS COMPLETE AND ACCURATE. DANIEL MAKES NO WARRANTIES, EXPRESSED OR IMPLIED, INCLUDING THE IMPLIED WARRANTIES OF MERCHANTABILITY AND FITNESS FOR A PARTICULAR PURPOSE WITH RESPECT TO THIS MANUAL AND, IN NO EVENT, SHALL DANIEL BE LIABLE FOR ANY INCIDENTAL, PUNITIVE, SPECIAL OR CONSEQUENTIAL DAMAGES INCLUDING, BUT NOT LIMITED TO, LOSS OF PRODUCTION, LOSS OF PROFITS, LOSS OF REVENUE OR USE AND COSTS INCURRED INCLUDING WITHOUT LIMITATION FOR CAPITAL, FUEL AND POWER, AND CLAIMS OF THIRD PARTIES.

PRODUCT NAMES USED HEREIN ARE FOR MANUFACTURER OR SUPPLIER IDENTIFICATION ONLY AND MAY BE TRADEMARKS/REGISTERED TRADEMARKS OF THESE COMPANIES.

DANIEL AND THE DANIEL LOGO ARE REGISTERED TRADEMARKS OF DANIEL INDUSTRIES, INC. THE EMERSON LOGO IS A TRADEMARK AND SERVICE MARK OF EMERSON ELECTRIC CO.

COPYRIGHT © 2012 BY DANIEL MEASUREMENT AND CONTROL, INC., HOUSTON, TEXAS, U.S.A.

All rights reserved. No part of this work may be reproduced or copied in any form or by any means - graphic, electronic, or mechanical – without first receiving the written permission of Daniel Measurement and Control, Inc. Houston, Texas, U.S.A.

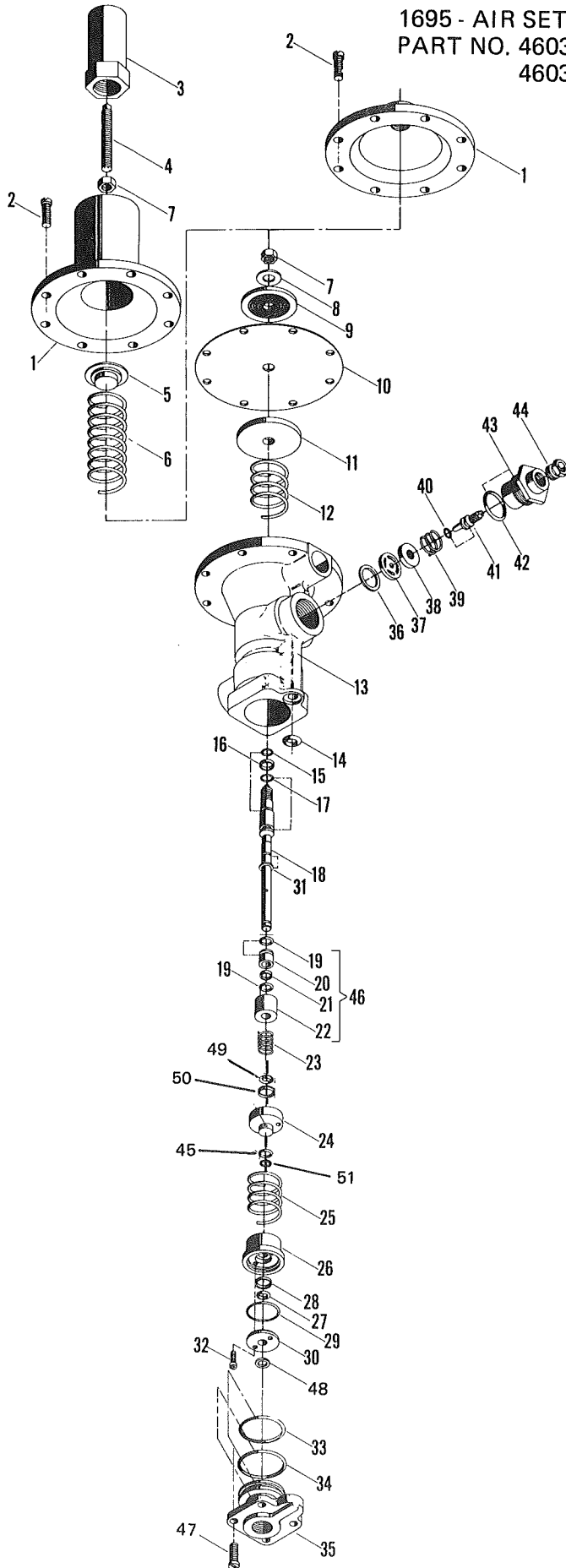
WARRANTY

1. **LIMITED WARRANTY:** Subject to the limitations contained in Section 2 herein, Daniel Measurement & Control, Inc. ("Daniel") warrants that the licensed firmware embodied in the Goods will execute the programming instructions provided by Daniel, and that the Goods manufactured by Daniel will be free from defects in materials or workmanship under normal use and care and Services will be performed by trained personnel using proper equipment and instrumentation for the particular Service provided. The foregoing warranties will apply until the expiration of the applicable warranty period. Goods are warranted for twelve (12) months from the date of initial installation or eighteen (18) months from the date of shipment by Daniel, whichever period expires first. Consumables and Services are warranted for a period of 90 days from the date of shipment or completion of the Services. Products purchased by Daniel from a third party for resale to Buyer ("Resale Products") shall carry only the warranty extended by the original manufacturer. Buyer agrees that Daniel has no liability for Resale Products beyond making a reasonable commercial effort to arrange for procurement and shipping of the Resale Products. If Buyer discovers any warranty defects and notifies Daniel thereof in writing during the applicable warranty period, Daniel shall, at its option, correct any errors that are found by Daniel in the firmware or Services or repair or replace F.O.B. point of manufacture that portion of the Goods or firmware found by Daniel to be defective, or refund the purchase price of the defective portion of the Goods/Services. All replacements or repairs necessitated by inadequate maintenance, normal wear and usage, unsuitable power sources or environmental conditions, accident, misuse, improper installation, modification, repair, use of unauthorized replacement parts, storage or handling, or any other cause not the fault of Daniel are not covered by this limited warranty, and shall be at Buyer's expense. Daniel shall not be obligated to pay any costs or charges incurred by Buyer or any other party except as may be agreed upon in writing in advance by Daniel. All costs of dismantling, reinstallation and freight and the time and expenses of Daniel's personnel and representatives for site travel and diagnosis under this warranty clause shall be borne by Buyer unless accepted in writing by Daniel. Goods repaired and parts replaced by Daniel during the warranty period shall be in warranty for the remainder of the original warranty period or ninety (90) days, whichever is longer. This limited warranty is the only warranty made by Daniel and can be amended only in a writing signed by Daniel. THE WARRANTIES AND REMEDIES SET FORTH ABOVE ARE EXCLUSIVE. THERE ARE NO REPRESENTATIONS OR WARRANTIES OF ANY KIND, EXPRESS OR IMPLIED, AS TO MERCHANTABILITY, FITNESS FOR PARTICULAR PURPOSE OR ANY OTHER MATTER WITH RESPECT TO ANY OF THE GOODS OR SERVICES. Buyer acknowledges and agrees that corrosion or erosion of materials is not covered by this warranty.

2. **LIMITATION OF REMEDY AND LIABILITY:** DANIEL SHALL NOT BE LIABLE FOR DAMAGES CAUSED BY DELAY IN PERFORMANCE. THE REMEDIES OF BUYER SET FORTH IN THIS AGREEMENT ARE EXCLUSIVE. IN NO EVENT, REGARDLESS OF THE FORM OF THE CLAIM OR CAUSE OF ACTION (WHETHER BASED IN CONTRACT, INFRINGEMENT, NEGLIGENCE, STRICT LIABILITY, OTHER TORT OR OTHERWISE), SHALL DANIEL'S LIABILITY TO BUYER AND/OR ITS CUSTOMERS EXCEED THE PRICE TO BUYER OF THE SPECIFIC GOODS MANUFACTURED OR SERVICES PROVIDED BY DANIEL GIVING RISE TO THE CLAIM OR CAUSE OF ACTION. BUYER AGREES THAT IN NO EVENT SHALL DANIEL'S LIABILITY TO BUYER AND/OR ITS CUSTOMERS EXTEND TO INCLUDE INCIDENTAL, CONSEQUENTIAL OR PUNITIVE DAMAGES. THE TERM "CONSEQUENTIAL DAMAGES" SHALL INCLUDE, BUT NOT BE LIMITED TO, LOSS OF ANTICIPATED PROFITS, REVENUE OR USE AND COSTS INCURRED INCLUDING WITHOUT LIMITATION FOR CAPITAL, FUEL AND POWER, AND CLAIMS OF BUYER'S CUSTOMERS.

1699 - SPRING SET
PART NO. 460340-100 (ALL SIZES)

1695 - AIR SET
PART NO. 460350-104 (2", 3" and 4")
460350-106 (6" ONLY)



All pilot valves should be inspected and cleaned at regularly scheduled intervals. All parts should be thoroughly cleaned and the o-rings and diaphragm should be checked for nicks, cuts and wear. Any defective or doubtful o-rings should be replaced.

PARTS LIST

Item	Description	Part No.	Req.
1	Cover (1695 Pilot)	460352-100	1
	(1699 Pilot)	460341-100	1
2	Screw	151030	8
3	Cover	453164-100	1
4	Adj. Screw	150687-024	1
5	Spring Guide	460017	1
6	Spring	460022	1
7	Nut (1695 Pilot)	151543-019	2
	(1699 Pilot)	151543-019	1
8	Washer	152267	1
9	Diaphragm Washer	460358	1
*10	Diaphragm	460359	1
11	Diaphragm Washer	460357	1
12	Spring	460371	1
13	Pilot Body	460351-100	1
*14	O-Ring	152067	1
*15	O-Ring	152064	1
*16	Glyde Ring	157159	1
*17	O-Ring	157068-022	1
18	Stem	460354	1
*19	O-Ring	152067-022	2
20	Hub	460363	1
*21	Glyde Ring	157160	1
22	Retainer	460364	1
23	Spring	460373	1
24	Stem Guide (2", 3", and 4")	460370	1
	(6")	460353	1
25	Spring	460372	1
26	Hub	460351	1
*27	O-Ring	152067-022	1
*28	Glyde Ring	157160	1
*29	O-Ring	157103-022	1
30	O-Ring Retainer	460362	1
31	Retainer Ring	153947-019	3
32	Screw	151049-019	2
*33	O-Ring	157098	1
*34	O-Ring	157076	1
35	Cap	460356-100	1
*36	Gasket	460369	1
*37	Needle Valve Seat	460368	1
*38	Valve Plate	460375	1
39	Spring	460374	1
*40	O-Ring	152062	1
41	Needle Valve	460367	1
*42	O-Ring	152087	1
43	Needle Valve Retainer	460366	1
44	Needle Valve Cap	460686	1
*45	O-Ring	152066-022	1
*46	Seat Assembly	460365	1
47	Screw	151001	4
48	Retainer Ring	153953-019	1
*49	O-Ring	157109-022	1
*50	Glyde Ring	157170	1
51	Washer	151917	1

*Recommended Spare Parts

© Copyright 1980, Brooks Instrument Div., Emerson Electric Co.
Printed in U.S.A.

DANIEL™ MEASUREMENT AND CONTROL, INC.

RETURNED MATERIAL AUTHORIZATION

REPAIR FORM FOR USED EQUIPMENT INCLUDING DECONTAMINATION/CLEANING STATEMENT

A Return Material Authorization (RMA) number must be obtained prior to returning any equipment for any reason. Download the RMA form from the Support Services web page by selecting the link below.

<http://www2.emersonprocess.com/EN-US/BRANDS/DANIEL/SUPPORT-SERVICES/Pages/Support-Services.aspx>

1. Return Material Authorization (RMA) Number _____
2. Equipment to be returned:
Model Number _____ Serial Number _____
3. Reason for return:

Decontamination/Cleaning Fluids Process					
A. List each substance in which the equipment was exposed. Attach additional documents if necessary.					
Common Name	CAS# if Available	Used for Hazardous Waste (20 CFR 261)	EPA Waste Code if used for hazardous waste		
		<input type="checkbox"/> Yes	<input type="checkbox"/> No		
		<input type="checkbox"/> Yes	<input type="checkbox"/> No		
		<input type="checkbox"/> Yes	<input type="checkbox"/> No		
		<input type="checkbox"/> Yes	<input type="checkbox"/> No		
		<input type="checkbox"/> Yes	<input type="checkbox"/> No		
		<input type="checkbox"/> Yes	<input type="checkbox"/> No		
B. Circle any hazards and/or process fluid types that apply:					
Infectious	Radioactive	Explosive	Pryophoric	Poison Gas	
Cyanides	Sulfides	Corrosive	Oxidizer	Flammable	Poison
Carcinogen	Peroxide	Reactive-Air	Reactive-Water	Reactive-Other (list):	
Other Hazard Category (list):					
C. Describe decontamination/cleaning process. Include MSDS description for substances used in decontamination and cleaning processes. Attach additional documents if necessary.					

Shipping Requirements

Failure to comply with this procedure will result in the shipment being refused.

1. Write the RMA number on the shipping package.
2. Inside the package include one copy of this document and all required Material Safety Data Sheets (MSDS)
3. Outside of the package attach one copy of this document and all required Material Safety Data Sheets (MSDS).

THIS EQUIPMENT, BEING RETURNED "FOR REPAIR," HAS BEEN COMPLETELY DECONTAMINATED AND CLEANED. ALL FOREIGN SUBSTANCES HAVE BEEN DOCUMENTED ABOVE AND MSDS SHEETS ARE ATTACHED.

By _____
(Signature) (Print name)

Title: _____ Date: _____

Company: _____

Phone: _____ Fax: _____

Emerson Process Management
Daniel Measurement and Control, Inc.
11100 Brittmoore Park Drive
Houston, TX 77041
T+1 713-467-6000
F+1 713-827-4805
www.emerson.com

Copyright© 2012

Daniel Measurement and Control, Inc. and Daniel Measurement Services, Inc. Divisions of Emerson Process Management reserve the right to make changes to any of its products or services at any time without prior notification in order to improve that product or service and to supply the best product or service possible.

Daniel Measurement Services, Inc. offers both on-call and contract maintenance service designed to provide single-source responsibility for all Daniel products. The sales and service offices of Daniel Measurement and Control, Inc. are located throughout the United States and in major countries overseas. For the location of the sales or service office nearest you, telephone the number below or visit the Daniel Measurement and Control, Inc. website.

T+1713-827-6314
F+1713-827-4805
www.emerson.com

