

# Emerson Smart Wireless Gateway

- Smart Wireless Gateway Asset Source Interface (ASI) delivers wireless data to the ARES Platform
- High speed functionality
- Uses highest safety standards

## Introduction

Emerson’s Smart Wireless Gateway ASI acts as a driver for wireless gateways, including 1420 and 1410 gateways. Smart Wireless Gateway ASI delivers wireless device data, health, and alerts to the ARES Platform.

## Effortless Connectivity

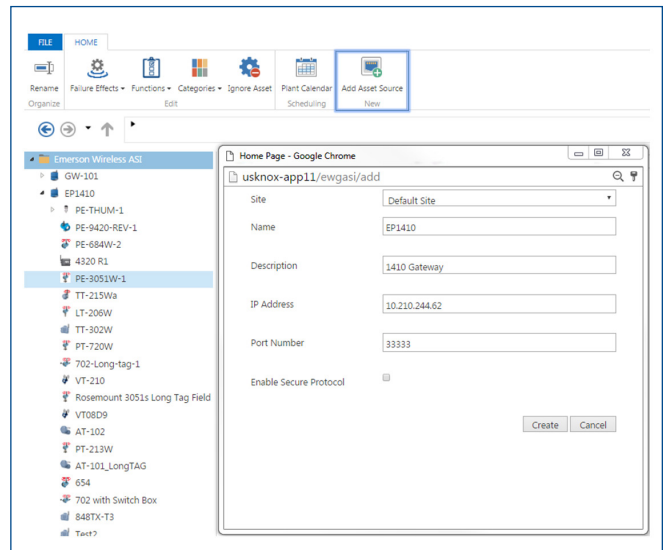
What used to take hours now takes seconds. Due to the high speed functionality of the Smart Wireless Gateway ASI, once you add your Smart Wireless Gateway, the devices and data are ready for you to start monitoring and keeping up with the health of your assets within seconds. You simply enter the IP address of the gateway, and the Smart Wireless Gateway ASI delivers all of the relevant device data to the ARES Platform.

## Layered security keeps network safe

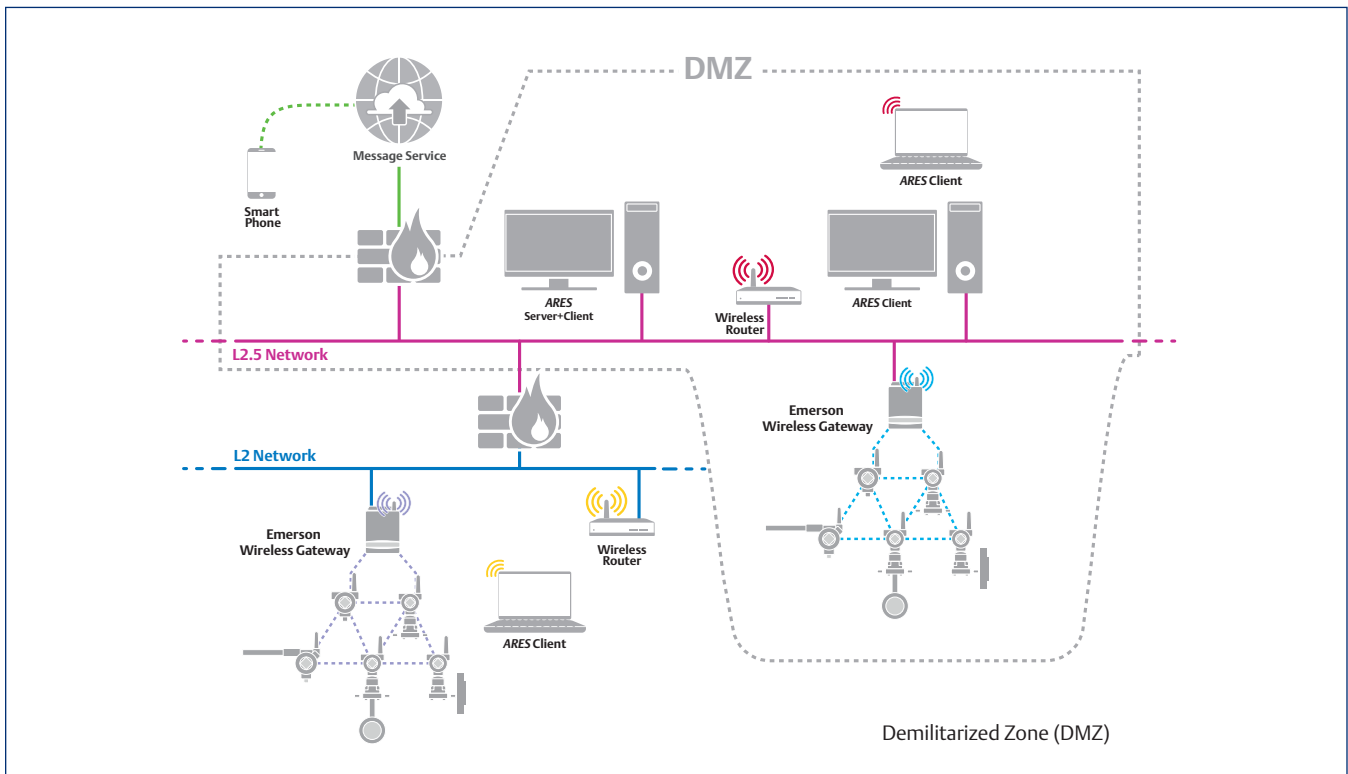
- Ensures data transmissions are received only by the Smart Wireless Gateway.
- Network devices implement industry standard Encryption, Authentication, Verification, Anti-Jamming, and Key Management.
- Flexible installation for complex network architectures.



Smart Wireless Gateways delivers wireless device data, such as health and alerts.



By simply selecting “Add Asset Source” from the ribbon bar of the Asset Explorer the user can quickly add a Smart Wireless Gateway. All devices connected to the gateway automatically populate within seconds.



The Smart Wireless Gateway ASI can be installed independently of the ARES Platform server allowing a secure connection to the Gateway while still allowing internet connectivity to ARES.

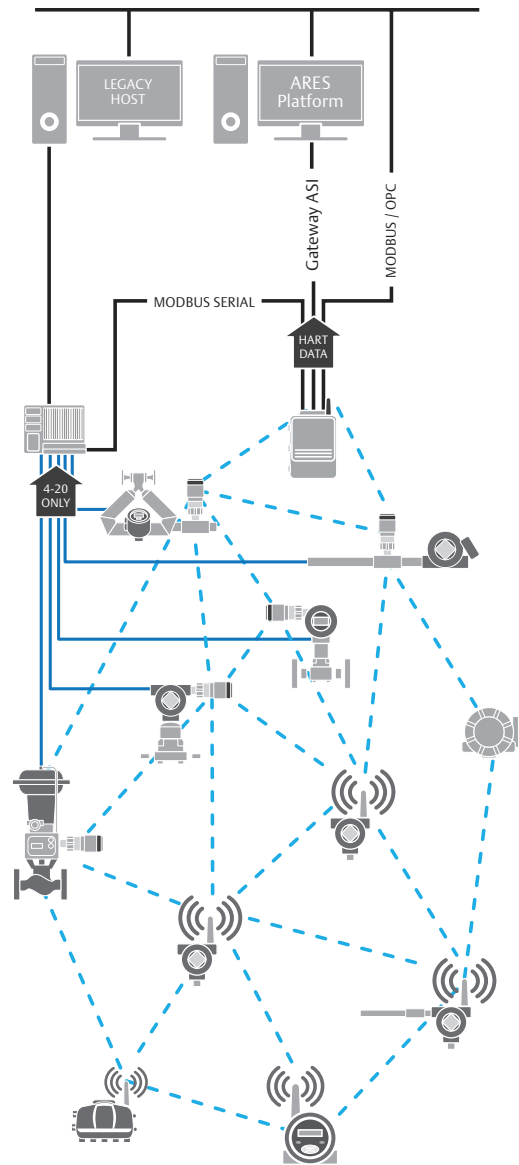
## Specifications

System Specifications	
Operating System	Window 7 Pro, Windows Server 2012 R2
Architecture	x64
Processor	2.4GHz quad processor or faster
RAM	8.0GB
Disk Space	100GB
SQL	Microsoft SQL Server 2014 Express and above
IIS	IIS 8.5
.NET	Microsoft.NET 4.5
Browsers	IE 11 Chrome v45
Virtualization	VmWare 5.5 Hyper-V 2012
Min. Resolution	1366x768
Communication	TCP/IP
Ports	Configurable

## Ordering Information

The Emerson Smart Wireless Gateway ASI is included in the following Wireless Packages for ARES. Additional ASI's can be purchased to connect more than one gateway to you ARES Platform.

Model	Product Description
A481420	ARES Wireless Gateway Pack
A489420	ARES Emerson Wireless Vibration Pack
A481420-AS	ARES Additional Smart Wireless Gateway ASI



**Emerson Process Management  
Reliability Solutions**  
835 Innovation Drive  
Knoxville, TN 37932 USA  
T 1 (865) 675-2400  
[www.emersonprocess.com/csi](http://www.emersonprocess.com/csi)

©2016, Emerson Process Management. All rights reserved.

The Emerson logo is a trademark and service mark of Emerson Electric Co. Machinery Health is a mark of one of the Emerson Process Management family of companies. All other marks are the property of their respective owners.

The contents of this publication are presented for informational purposes only, and while every effort has been made to ensure their accuracy, they are not to be construed as warranties or guarantees, expressed or implied, regarding the products or services described herein or their use of applicability. All sales are governed by our terms and conditions, which are available on request. We reserve the right to modify or improve the designs or specifications of our products at any time without notice.

