

Plant Messenger Alert Reporting Service

- Delivers DeltaV™ and DeltaV SIS™ alarms, events and device alerts to enterprise users and applications
- Allows users to filter information according to their specific needs—no “spam”
- Alert reports can be delivered via e-mail, pager, or XML files
- Alert reports are completely configurable—no software development skills are needed



Plant Messenger delivers DeltaV™ alarms and events anywhere in the world.

Introduction

Plant Messenger is used to exchange data between DeltaV system applications and users and business systems within your enterprise. The Plant Messenger suite consists of the Plant Messenger base services and a Plant Messenger component service application.

The Plant Messenger base services include a user interface for creating and generating reports and a transaction handler for managing the DeltaV system information. The Plant Messenger component service application is the Plant Messenger Alert Reporting Service.

The Plant Messenger Alert Reporting Service allows enterprise users to configure alert reports that will be delivered directly to them whenever a critical device alert, process alarm or system event occurs in the DeltaV system. With the wide variety of information filters, delivery mechanisms, and report formats supported, users are assured of receiving only the information that they want, when they want it.

Benefits

Delivers DeltaV and DeltaV SIS alarms, events and device alerts to enterprise users and applications: The Plant Messenger Alert Reporting Service delivers DeltaV and DeltaV SIS alarm, event and device alert reports to you in the style, format, and location you specify. You don't have to be in the control room, or even on the premises, to be notified of any and all process alerts that interest you.

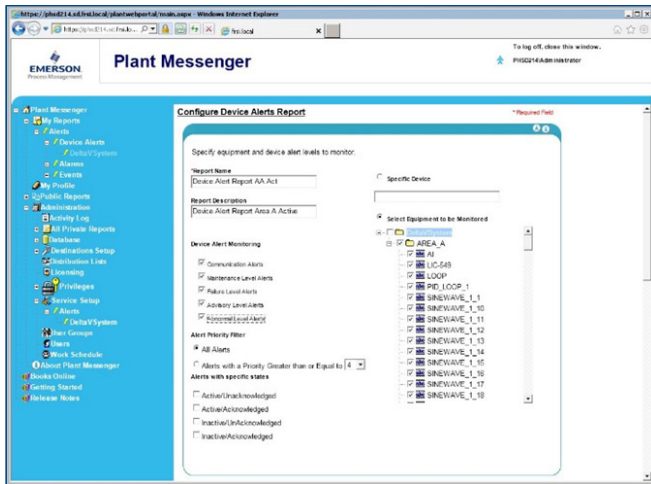
Allows users to filter information according to their specific needs—no “spam”: The Plant Messenger Alert Reporting Service provides a number of configurable filters that allow the user to identify the specific information that they are interested in. This eliminates nuisance e-mail and pages. In addition, alert reports may be configured to be delivered to different destinations depending on the recipients' on/off duty status.

Alert reports can be delivered via e-mail, pager, or file save: Gone are the days when you had to be looking at a PC screen in order to be apprised of process alerts. With Plant Messenger Alert Reporting, time critical information is as close as your pager, cell phone, or laptop, even when you're on the other side of the world.

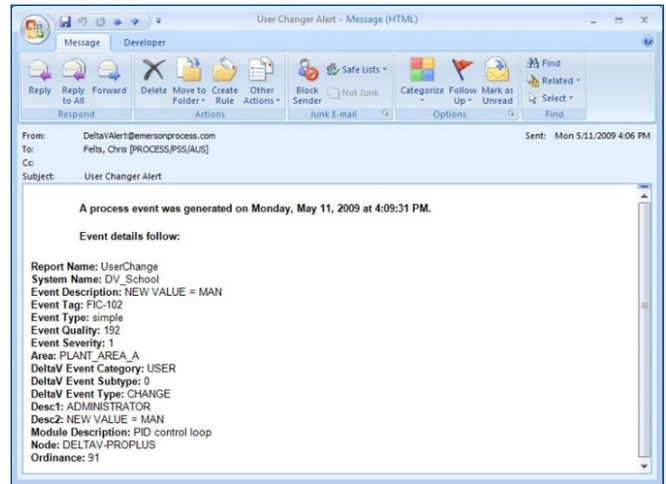
Alert reports are completely configurable—no software development skills are needed: The Plant Messenger user interface is accessed through Microsoft's Internet Explorer Web browser. No software other than Internet Explorer needs to be installed on Plant Messenger user workstations, eliminating software installation and maintenance issues. This "zero client" approach allows Plant Messenger users to configure reports from anywhere in the world!

Since no programming skills are required to construct Plant Messenger reports, virtually any user in the enterprise can have access to the specific information they need to perform their duties, and receive the information requested when and where they want it!

Multiple report formats are available "out of the box" for each Messenger report service. However, advanced users who would like to construct their own report formats can do so using XSLT style sheets.



Plant Messenger Alert Reporting Service allows you to configure alarm, event and device alert reports using Internet Explorer.



Plant Messenger Alert Reporting Service allows report delivery to file locations, email addresses and mobile devices.

System Compatibility

Plant Messenger v1.6	DeltaV v11.3.1	DeltaV v12.3.1	DeltaV v13.3.1
Plant Messenger for use with Windows Server 2008 R2 SP1, Windows Server 2008 32-bit SP2, or Windows Server 2016 64-bit operating system	YES	YES	YES
Plant Messenger for use with Windows 7 32-bit SP1, Windows 7 64-bit SP1 Professional, or Windows 10 64-bit Professional operating system	YES	YES	YES
Internet Explorer 9 or 11*	YES	YES	YES
Plant Messenger Alert Reporting Service	YES	YES	YES

*Internet Explorer 9 is only used for the Windows Server 2008 SP2 32-bit operating system. Internet Explorer 11 is used for the remaining supported operating systems.

System Requirements

- Minimum Hardware Requirements for Server Class PC: 2.0 GHz 64-bit processor (3.4 GHz recommended), 2.0 GB RAM (4 GB recommended), a 40 GB hard drive with 2 GB free space, and 1 or more Ethernet cards depending on system architecture.
- Minimum Hardware Requirements for Workstation Class PC: 2.0 GHz 64-bit processor (3.4 GHz recommended), 2.0 GB RAM (4 GB recommended), a 40 GB hard drive with 1 GB free space (2 GB recommended), and 1 or more Ethernet cards depending on system architecture. When Plant Messenger is installed on a PC running the Windows 7 operating system, the Plant Messenger Alert Reporting component service will be limited to communicating with a single DeltaV system.
- Microsoft Internet Explorer 9 or 11. Internet Explorer 9 is only used for the Windows Server 2008 SP2 32-bit operating system. Internet Explorer 11 is used for the remaining supported Operating Systems.
- Plant Messenger installs Internet Explorer 11 on all supported Operating Systems. Additional software and components are also installed as part of this process. The Windows Update (Control Panel\System and Security\Windows Update) should be turned off so the prerequisites that come with the package are installed.

- For e-mail report delivery, a connection to an e-mail server that supports SMTP based e-mail delivery is required.
- For paging, a connection to a SNPP server or a SMTP e-mail server is required. The SNPP server is the preferred mechanism for sending pages. Pagers, phones and other mobile devices that are to receive Plant Messenger reports via a SNPP or SMTP server must support text messaging.
- Note: Plant Messenger cannot be installed on a node on which DeltaV has been installed.
- Note: Windows Server operating systems are installed with ASP.NET installed, and Routing and Remote Access Server disabled or not installed.
- Note: Plant Messenger cannot be installed on a node that is also a domain controller.
- Note: IIS installation is required, where the web server is properly registered with a DNS service and the domain name does not contain an underscore.

Ordering Information

Description	Model Number
Plant Messenger base license	VF1019
Plant Messenger Alert Reporting Service	VF1013

Related Products

- Event Chronicle. Captures process, system and user alarms and events and stores them in a Microsoft SQL Server database.

Related Products

- A non-DeltaV workstation that complies with the requirements as detailed in the System Requirements section.
- A Plant Messenger base license.
- A DeltaV ProfessionalPLUS or Application Station workstation to interface with the Plant Messenger Alert Reporting Service.
- The Plant Messenger Alert Service is compatible with the DeltaV systems noted in the DeltaV System Compatibility section.

Emerson

North America, Latin America:

☎ +1 800 833 8314 or

☎ +1 512 832 3774

Asia Pacific:

☎ +65 6777 8211

Europe, Middle East:

☎ +41 41 768 6111

🌐 www.emerson.com/deltav

©2016, Emerson Process Management. All rights reserved.

The Emerson logo is a trademark and service mark of Emerson Electric Co. The DeltaV logo is a mark of one of the Emerson Process Management family of companies. All other marks are the property of their respective owners.

The contents of this publication are presented for informational purposes only, and while every effort has been made to ensure their accuracy, they are not to be construed as warranties or guarantees, express or implied, regarding the products or services described herein or their use or applicability. All sales are governed by our terms and conditions, which are available on request. We reserve the right to modify or improve the designs or specifications of our products at any time without notice.