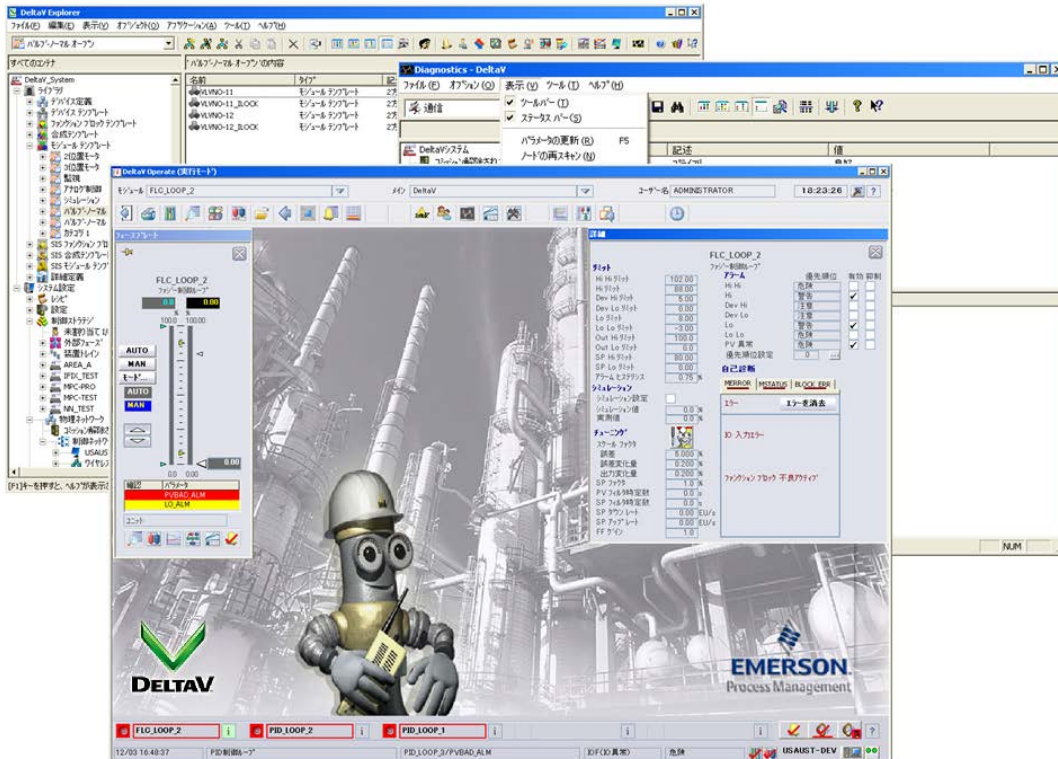


DeltaV™ v11.3 Japanese



The DeltaV system makes automation easy using Japanese operator, diagnostic and configuration applications.

- Operate your DeltaV™ system in Japanese
- Diagnose and tune the DeltaV system in Japanese
- Configure the DeltaV system in Japanese
- Configure and troubleshoot HART and FOUNDATION fieldbus devices with AMS Device Manager v11.1 in Japanese

The v11.3 DeltaV system software offers *operator, diagnostic and configuration applications in Japanese*. View DeltaV Operate graphics, faceplates, alarm summaries, active batches and detail displays in Japanese. Trends, alarms and events are recorded and viewed in Japanese.

You can also troubleshoot and configure your DeltaV system, and view Microsoft Windows information, such as menus and error messages in the language you know best – Japanese.

AMS Device Manager provides integrated device configuration and troubleshooting, along with access to Alert Monitor, Audit Trail, and SNAP-ON applications.

Easily upgrade your DeltaV 10.3 (including AMSinside) Japanese to DeltaV 11.3 and AMS Device Manager v11.1.

Introduction

Is English a foreign language to your operators, technicians and engineers? Are you tired of having to use English keyboards and operating systems?

Benefits

Operator applications in Japanese.

Log on to the DeltaV system in Japanese. State-of-the-art graphics, trends, process and device alarms, and batch and campaign operation are all in Japanese, making the operators experience completely natural. Trends, alarms and events are recorded and viewed in Japanese. And the unique DeltaV Flexlock feature securely locks the operator into the system. This ensures system integrity.

All of the words typically seen by operators are in Japanese. This includes tags and descriptors, alarm messages, operational commands such as open, abort, stop, etc. Any menus in the localized applications are also in Japanese.

Diagnose and tune the DeltaV system in Japanese.

Troubleshoot your DeltaV system, tune your control loops with DeltaV Tune and view the on-line conditions of your fieldbus devices in Japanese.

Configure the DeltaV system in Japanese.

Configure your entire system using your native language. Whether creating graphics, control strategies or user security, all configuration menus, dialogs, etc., are in Japanese.

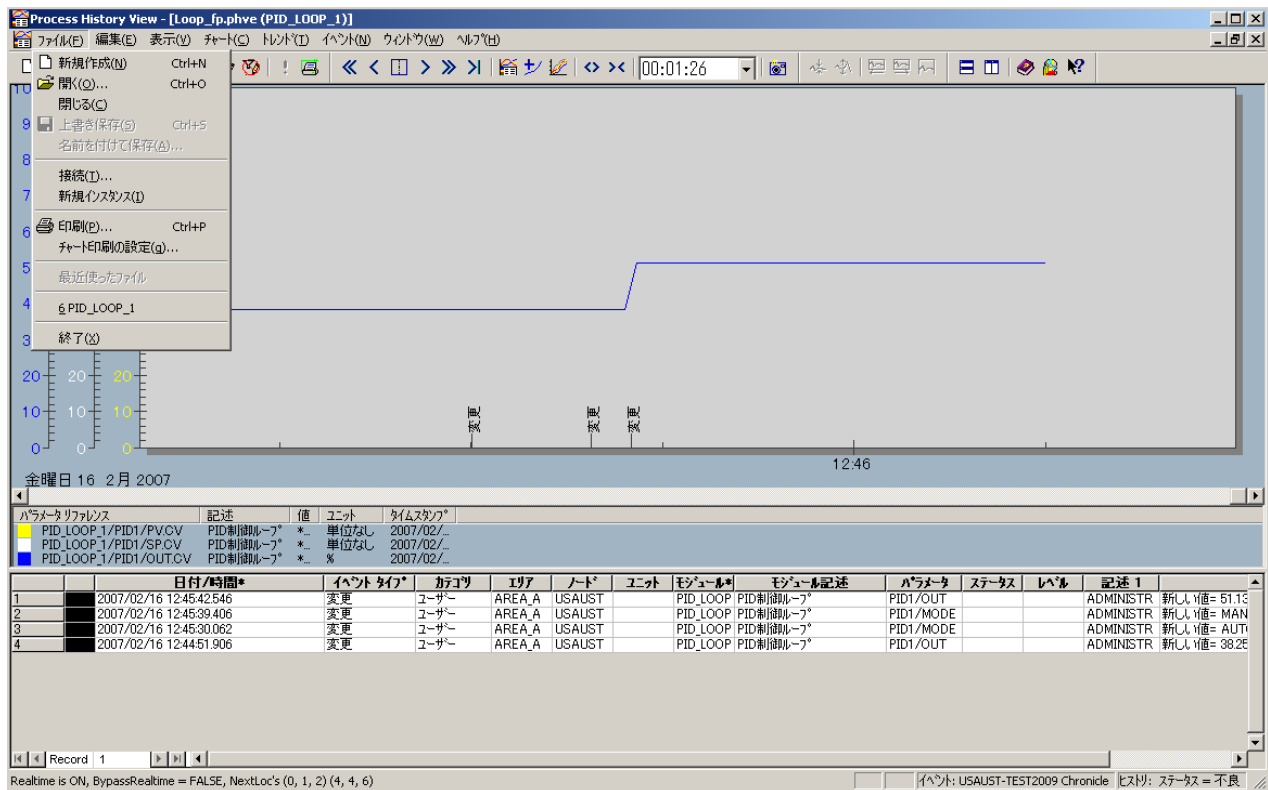
Configure and troubleshoot HART and FOUNDATION fieldbus devices with AMS Device Manager v11.1.

Use AMS Device Manager, in Japanese, including Alert Monitor and Audit Trail, to manage your intelligent devices. SNAP-ON applications and individual device DD screens appear in English. Device screens depend on whether the device manufacturer has translated their DDs.

Runs on Microsoft Windows 7 Professional and Windows Server 2008 with Multilingual User Interface (MUI) Pack in Japanese.

DeltaV v11.3 and AMS Device Manager v11.1 run on Microsoft Multi-lingual User Interface (MUI) software in Japanese with either Windows 7 Professional and Windows Server 2008 and Server 2008. Workstations and servers are provided with English versions of Operating Systems and MUI software.

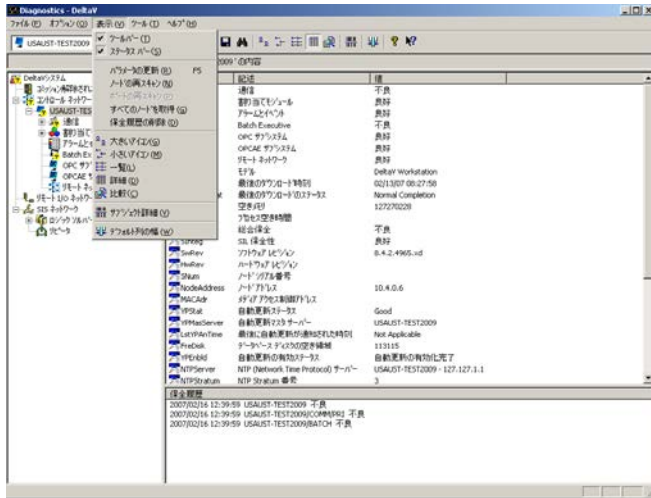
The Windows MUI Pack provides most of the operating system user interface — including the Start and Programs menus, alerts and dialog boxes, along with Help — in Japanese. Since the underlying operating system is in English, any needed operating system updates are offered concurrently for all DeltaV systems, regardless of localization.



View historical trend and event information in Japanese.

Localized User Applications

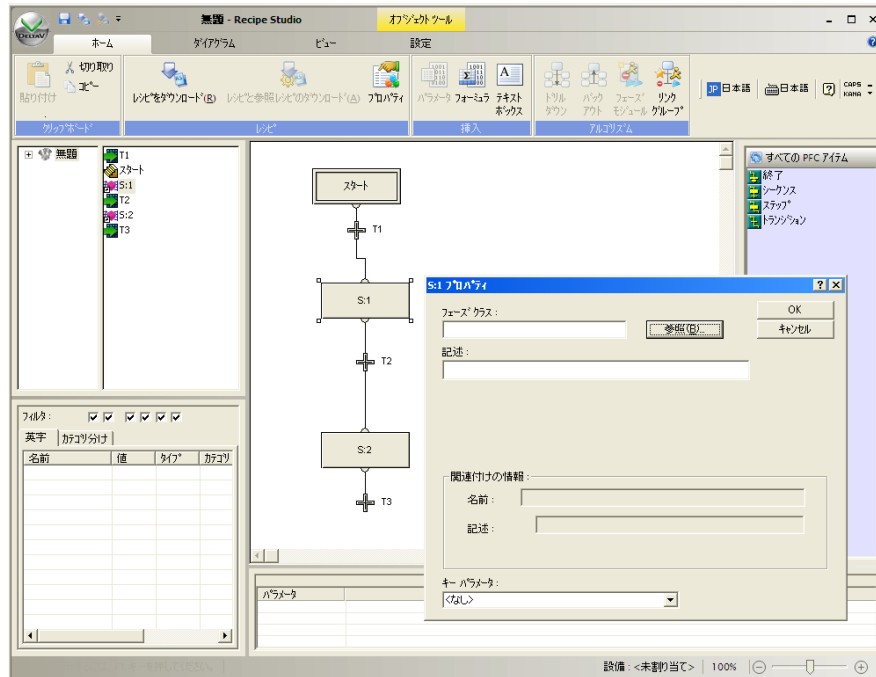
The following DeltaV applications are offered in Japanese. Refer to the specific product data sheet for more information.



Diagnose your system in Japanese.

- **AMS Device Manager**
Configure and diagnose your HART and FOUNDATION fieldbus devices. Includes translated Audit Trail and access to SNAP-ON applications.
- **DeltaV Operate for Batch.**
Batch Controls allow you to operate your batches from the same DeltaV Operate environment used to monitor and control your process.
- **Campaign Manager**
Create and edit batch campaigns.
- **Configuration Audit Trail**
Maintain full version control of your configuration.
- **Configuration Software Suite**
Configure your entire DeltaV system.
- **Control Studio Online**
View executing control strategies using the same graphical view used to configure
- **DeltaV Continuous Historian**
Store and retrieve process measurements efficiently. Historian administration localized.

- **DeltaV Event Chronicle**
Store and retrieve operator changes, alarms, and changes in device status.
- **DeltaV History View**
Provides the unique capability to integrate related batch, continuous and event data.
- **DeltaV InSight**
An advanced process monitoring system that instantly identifies under-performing loops and is used for fuzzy and PID auto-loop tuning.
- **DeltaV Neural**
Easy-to-use tools for developing and training the neural network model.
- **DeltaV Operate**
Includes high-resolution graphics, trends and alarms prioritized by user, standard operating desktop, and system-wide built-in security.
- **DeltaV Predict and Predict Pro**
Offers greater throughput to maintain plant operation at measurable operating constraints.
- **DeltaV Simulate**
PlantWeb development environment including simulation on a single PC.
- **DeltaV Zones**
Integrated operation and alarming for multiple DeltaV systems.
- **Diagnostics Explorer**
System-wide (PAS and SIS), device-deep diagnostics.
- **MPC Operate**
View and modify on-line your model predictive control strategies.
- **Recipe Studio.**
Create, modify, and troubleshoot recipes and construct batch control strategies.



Easy batch recipe configuration in Japanese

DeltaV Hardware and Control Applications

The following works with DeltaV v11.3 Japanese. DeltaV I/O products are not listed below because the hardware is not impacted by localization:

- **Advanced Unit Management Software**
Class-based Unit, Equipment, Control modules and Unit Phases.
- **Batch Executive**
Coordinates all activities during batch operation.
- **DeltaV Control Network Hardware**
A dedicated Ethernet network connecting DeltaV workstations and the controllers.
- **DeltaV Dual Monitor Workstation**
Two screens for monitoring your operations.
- **DeltaV Four Monitor Workstation**
Four screens for monitoring your operations.
- **DeltaV Fuzzy**
Run advanced fuzzy logic algorithms in your controller.
- **DeltaV v11.3 Supported Controllers**
Simplex and redundant controllers.
- **DeltaV Operator Keyboard**
Flexible, custom, dedicated operator touch screen keyboard for DeltaV workstations.
- **DeltaV Remote Access Service**
Service to locate Operator and Professional Workstations on your plant LAN.
- **DeltaV Remote Client**
Remotely connect to your DeltaV system using thin-client technology.
- **DeltaV SIS Function Blocks**
Function blocks provide an easy configuration for SIS applications.
- **DeltaV SIS Logic Solver**
DeltaV logic solver provides SIS communications and control.
- **Monitor and Control Software**
Common monitoring and control functions.
- **Workstation Hardware**
DeltaV selection of workstations. Select the option for non-English languages (includes the Microsoft MUI Pack).

English DeltaV Applications

The following applications work with DeltaV v11.3 Japanese. Any user interface component is in English, except as is listed above:

- **DeltaV OPC Event Server**
Transfer alarm and event information to and from the DeltaV system.
- **DeltaV OPC History Server**
Transfer history information to and from the DeltaV system.
- **DeltaV Excel Add-in**
Access real-time information from the DeltaV system into Excel.
- **History Analysis**
Provides Web-based viewing and analysis of DeltaV batch, continuous, alarm and event data.
- **OPC Mirror**
Transfers thousands of values back and forth between your DeltaV system and other OPC-compliant systems.
- **OPC Pager**
Keeps a 24-hour eye on your critical values and notifies you when they meet your alert criteria.
- **Recipe Exchange**
Open interface for the import/export of DeltaV recipes.
- **Syncade External Phase Server**
Coordinate multiple Syncade external phases on a unit.

Supported 3rd Party Applications

The following *work* with DeltaV v11.3 Japanese.

- **INtools**
Import DeltaV configuration from INtools.
- **OSIsoft PI Enterprise Server**
The PIEnterprise Server is an enterprise-wide real-time information infrastructure that integrates production information with enterprise business systems.
- **Sytech XLReporter**
Easily create reports with real-time or historical data from the DeltaV.

- **Symantec Virus Scanner**
Anti-virus software to protect DeltaV workstations and servers.

Unsupported DeltaV Applications

The following *do not work* with DeltaV v11.3 Japanese.

- **DeltaV Analyze**
Web page view of the most the frequently occurring alarms and events from the Event Chronicle or Plant Wide Event Historian.
- **DeltaV Connect**
DeltaV workstations connect to your Bailey, Honeywell or APACS systems.
- **DeltaV Operate for PROVOX**
PROVOX controllers and I/O in place and controlled by a DeltaV Operator Station.
- **DeltaV Operate for RS3**
RS3 controllers and I/O in place and controlled by a DeltaV Operator Station.
- **DeltaV Plantwide Event Historian**
Central storage and view of alarms and events from different systems.
- **DeltaV Web Server**
View your modified operator displays in web pages.
- **Excel Report Manager**
Report application by SyTech.
- **Fault Tolerant Server**
High availability workstations.
- **MiMiC**
Process simulation software package.
- **PlantWeb Messenger**
Exchange data between DeltaV and business systems.
- **PROVOX Applications Server**
DeltaV integration (PAS) platform for PROVOX.

Ordering Information

Model Number	Description
VE2301R113L23	DeltaV v11.3 Software Media Pack, in Japanese. DeltaV operator, maintenance and configuration applications (as listed in PDS) provided in Japanese. Includes AMS Device Manager v11.1 Japanese installation media. All other applications in English.
VE9921R113L23	DeltaV Simulate StandAlone with DeltaV v11.3 Software Media Pack, in Japanese.
VE9922R113L23	DeltaV Simulate Professional StandAlone with DeltaV v11.3 Software Media Pack, in Japanese.
VE9923R113L23	DeltaV Simulate StandAlone with Basic SIS Simulation and DeltaV v11.3 Software Media Pack.
VX2101R113L23	DeltaV Simulate PPN; Multi-Node; includes DeltaV v11.3 Software Media Pack, in Japanese.

Example of complete model order number: VE2301R113L23

To locate a sales office near you, visit our website at:
www.EmersonProcess.com/DeltaV
 Or call us at:
 Asia Pacific: 65.6777.8211
 Europe, Middle East: 41.41.768.6111
 North America, Latin America: +1 800.833.8314 or
 +1 512.832.3774

For large power, water, and wastewater applications
 contact Power and Water Solutions at:
www.EmersonProcess-powerwater.com
 Or call us at:
 Asia Pacific: 65.6777.8211
 Europe, Middle East, Africa: 48.22.630.2443
 North America, Latin America: +1 412.963.4000

© Emerson Process Management 2013. All rights reserved. For Emerson Process Management trademarks and service marks, go to:
<http://www.emersonprocess.com/home/news/resources/marks.pdf>.

The contents of this publication are presented for informational purposes only, and while every effort has been made to ensure their accuracy, they are not to be construed as warranties or guarantees, express or implied, regarding the products or services described herein or their use or applicability. All sales are governed by our terms and conditions, which are available on request. We reserve the right to modify or improve the design or specification of such products at any time without notice.

