

DeltaV™ Cabinet Nameplate



Nameplate holder and insert provide standardized labelling for DeltaV equipment cabinets.

- Standardized labeling for DeltaV™ equipment cabinets
- High quality injection molded plastic construction
- Insert provides space for three lines of information
- Insert can be easily inserted and removed if required

Introduction

The DeltaV nameplate holder and insert provides an economical and standardized method to use for labeling and identifying DeltaV equipment cabinets. The recommended cabinet nameplate mounting placement is show below.

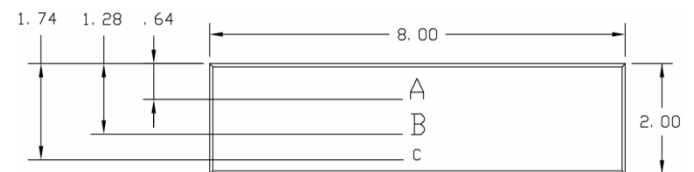


Product Description

The DeltaV cabinet nameplate holder is 14.05" w x 2.5" h and made of high-quality, injection molded plastic with a polished chrome and black finish. The nameplate holder comes ready to mount with a die-cut adhesive backing and also through holes for mounting with optional fasteners.

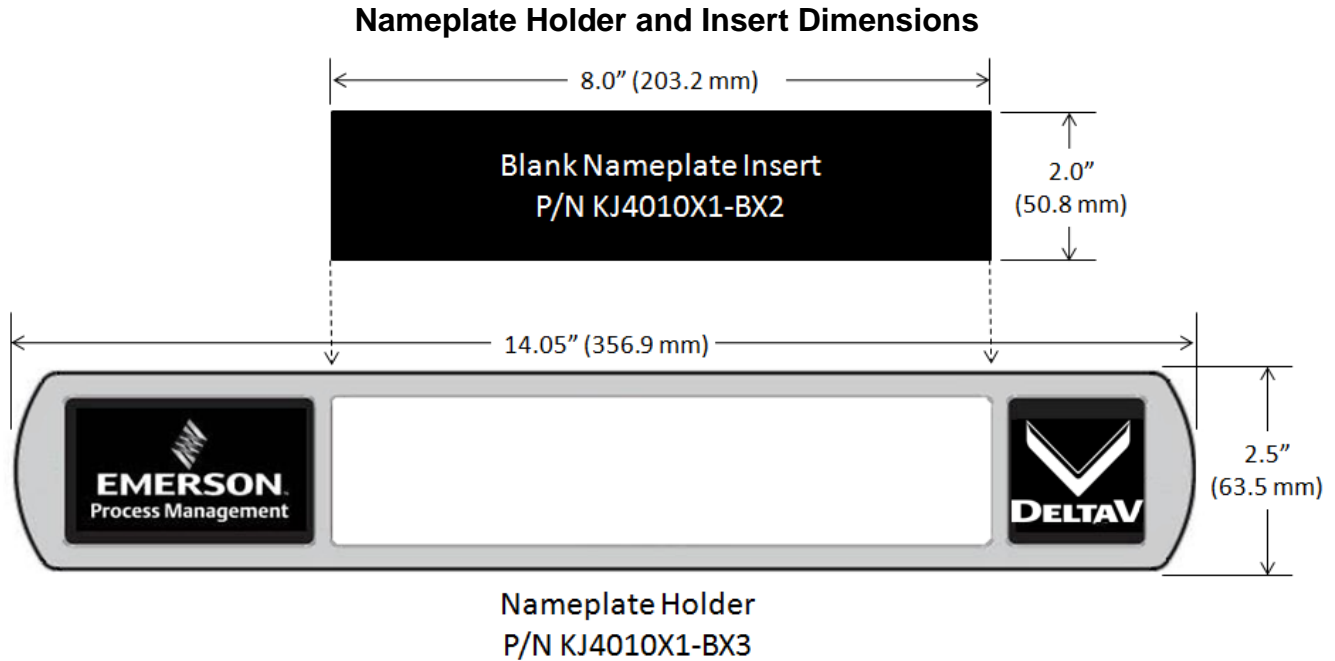
A window in the middle of the nameplate holder houses a 8" w x 2" h nameplate insert. The nameplate insert is captive in the nameplate holder, but can be easily inserted and removed if needed.

The nameplate insert is a Gravoply 2, 2-ply, black matte surface color with white core material that is 0.062" (1.57 mm) thick. The insert can be engraved with up to three lines of customer-supplied cabinet and or equipment identification information. The recommended spacing for engraving is shown below.



Recommended Nameplate Lettering Spacing

- Row A/B engraved characters should be 0.375" (9.5 mm) and show white core
- Row C engraved characters should be 0.1875" (4.76 mm) and show white core
- Engraved characters and lines of lettering should be centered on the nameplate



Ordering Information

Description	Model Number
DeltaV Nameplate Holder (Quantity 10 in package)	KJ4010X1-BX3
Blank Nameplate Insert (Quantity 10 in package)	KJ4010X1-BX2

To locate a sales office near you, visit our website at:

www.EmersonProcess.com/DeltaV

Or call us at:

Asia Pacific: 65.6777.8211

Europe, Middle East: 41.41.768.6111

North America, Latin America: +1 800.833.8314 or
+1 512.832.3774

For large power, water, and wastewater applications

contact Power and Water Solutions at:

www.EmersonProcess-powerwater.com

Or call us at:

Asia Pacific: 65.6777.8211

Europe, Middle East, Africa: 48.22.630.2443

North America, Latin America: +1 412.963.4000

© Emerson Process Management 2013. All rights reserved. For Emerson Process Management trademarks and service marks, go to: <http://www.emersonprocess.com/home/news/resources/marks.pdf>.

The contents of this publication are presented for informational purposes only, and while every effort has been made to ensure their accuracy, they are not to be construed as warranties or guarantees, express or implied, regarding the products or services described herein or their use or applicability. All sales are governed by our terms and conditions, which are available on request. We reserve the right to modify or improve the design or specification of such products at any time without notice.