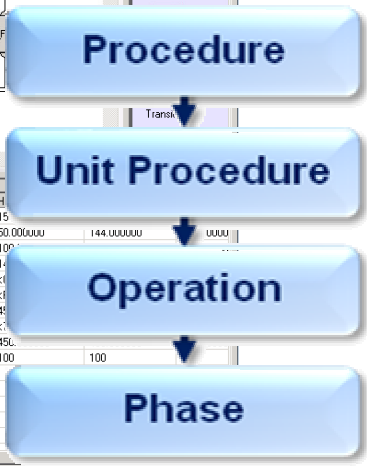


Recipe Studio

The screenshot displays the Recipe Studio interface for a procedure named 'DEMO_LOCK_PARAM'. The main window shows a graphical flowchart starting with a 'START' block, followed by 'BEGIN PROCEDURE EXECUTION', and then three parallel 'UP_FILL_FEED_TK' blocks (TK-1, TK-2, TK-3). This is followed by a 'WAIT UNTIL FEED TANKS FILLED' block. The interface also includes a left-hand pane with a tree view of the procedure steps and a bottom pane with a table of parameters.

Name	Description	Value	Type	Category	Locked
AGITATE_TIME	Agitation Time	10	Integer	Process Input	False
MAT1_AMOUNT	Amount of Feed Tank 1 Material to Charge to Prep Tank	120	Real	Process Input	True
MAT2_AMOUNT	Amount of Feed Tank 2 Material to Charge to Prep Tank	168	Real	Process Input	True
MAT3_AMOUNT	Amount of Feed Tank 3 Material to Charge to Prep Tank	12	Real	Process Input	False
OPER_PROMPTS	Issue Prompt for Agitation Time	0	Integer	Process Input	True
PREP_TK	Name of Prep Tank Being Used	None	Named Set	Process Report	True
SYNCADE	Indicates Whether Syncade is Being Used or Not	False	Named Set	Process Input	True
TK1_LEVEL	Feed Tank 1 Fill Level	700	Real	Process Input	True
TK2_LEVEL	Feed Tank 2 Fill Level	700	Real	Process Input	True
TK3_LEVEL	Feed Tank 3 Fill Level	700	Real	Process Input	False
WTR_AMOUNT	Amount of Water to Charge to Prep Tank	300	Integer	Process Input	True



Batch configuration using industry standard control language and controls with Recipe Studio

- Builds your recipes graphically
- ISA-88.01 and IEC 61131-3 Design Foundation
- Single, system-integrated configuration database

Introduction

Are you ready to configure your batch your way? Eliminate complicated configuration applications that limit your batch processing capability. Replace those applications with a single system designed to easily configure your recipes.

Recipe Studio gives you powerful tools to create, modify, and troubleshoot your recipes. The graphical configuration tools in the DeltaV™ system simplify the overall engineering effort and reduce the development and testing time required.

Even users without computer programming expertise can construct batch control strategies quickly and easily without extensive product training.

Benefits

Build your recipes graphically. Recipe Studio allows you to create and maintain flexible and reusable recipes. Developing your recipes is a quick and easy task, you *point and click* on the tools to build the recipe in a graphical display.

ISA-88.01 and IEC 61131-3 Design Foundation.

DeltaV batch is built on *current industry standards*. Procedural control models, as well as terminology used throughout the system are based on the *ISA-88.01* batch manufacturing standard. Procedures, unit procedures, and operations are constructed graphically using *IEC 61131-3* compliant Sequential Function Charts (SFCs).

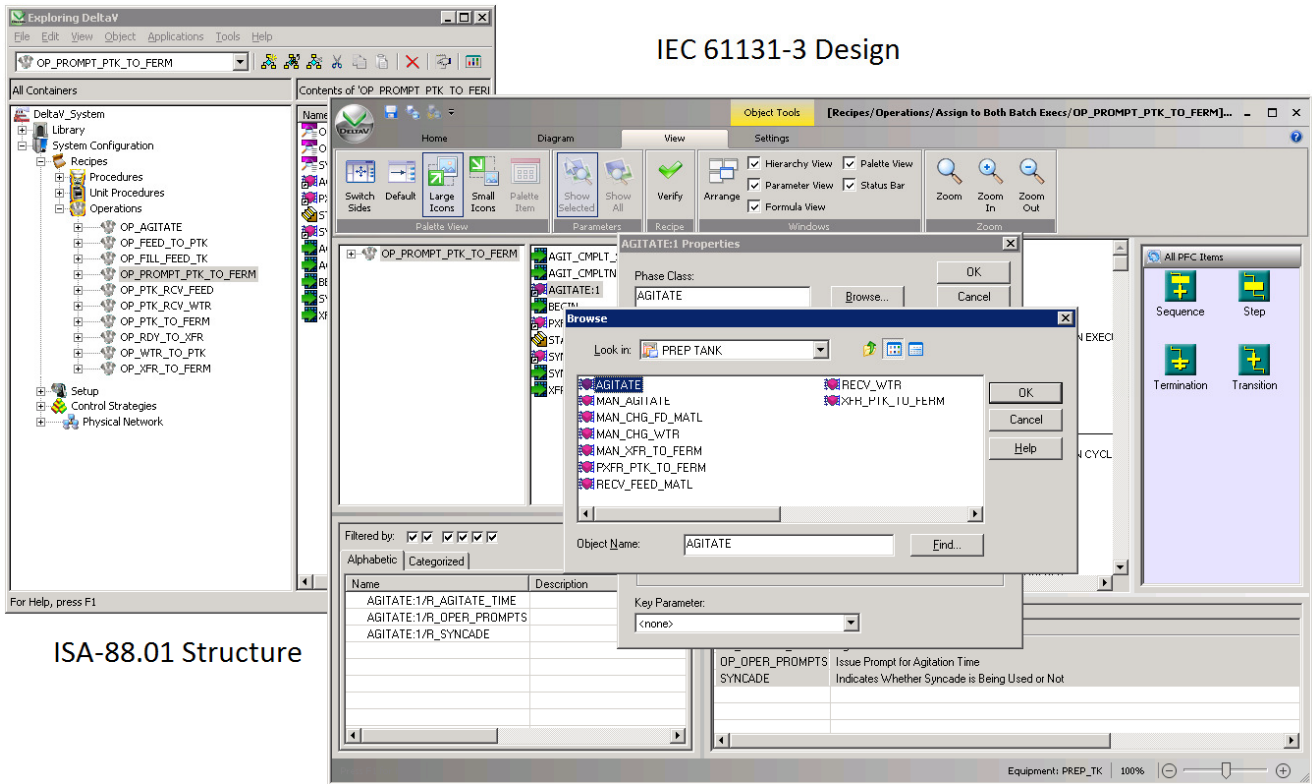
Single integrated configuration database. A *single, object-oriented* database eliminates the need for managing and synchronizing configuration data across multiple configuration databases.

Product Description

In Recipe Studio, you define recipe configurations (procedures, unit procedures, and operations) in an offline environment. The DeltaV *built-for-batch* architecture provides an integrated batch engineering environment. Procedural elements are configured with similar tools and techniques used to construct basic level process control strategies. Drag-and-drop, point-and-click, and simple browsing tools help you easily maneuver in the recipe application. Hierarchical and object attribute views offer additional information to the user and bring more power to the engineer while making configuration easier.

Recipe Studio is an object-oriented technology. All items in an SFC are *context-sensitive*. Link a step within a unit procedure to an operation with a simple right-click of the mouse. Object help, properties, and other editing tools are also accessible here. Recipe Studio allows a user to design an unlimited number of procedures, unit procedures, and operations.

Whether running on a ProfessionalPLUS Station, Professional Station, Operator Station or Base Station, Recipe Studio accesses the single configuration database used by the entire DeltaV system. With this client-server architecture, multiple Recipe Studio applications may be opened simultaneously in a single system.



Open, edit, drag and drop, browse, and integrate all your recipe elements.

Ordering Information

Description	Model Number
Recipe Studio	CE2164

* Recipe Studio is included in the ProfessionalPLUS Station, Professional Station, and DeltaV Engineering Seat Software Suite(s). However, to execute recipes created with Recipe Studio, the prerequisites shown below are needed:

Related Products

- **Advanced Unit Management Software.** Provides class-based Unit Modules and aliasing to make developing unit-relative equipment strategies simple.
- **Batch Executive.** The batch engine which coordinates all batch processing activity, creates detailed batch history records and schedules recipes and resources.
- **Configuration Software Suite.** Makes it easy to create Control Strategies and System Graphics to get your plant up and running quickly and efficiently.
- **DeltaV Operate.** High performance operator graphics, trends and alarms offered in standard operating layouts and utilizing system-wide built-in security.
- **DeltaV Operate for Batch.** Batch Controls allow you to operate your batches from the same DeltaV Operate environment used to monitor and control your process.
- **Monitor and Control Software.** Provides a single user interface with industry standard control languages and functions for graphical control strategy development, testing, and deployment information.

Prerequisites

- DeltaV M-Series controller(s) with Advanced Unit Management software license. Refer to the Advanced Unit Management product data sheet for details.
- DeltaV Batch Executive. Refer to the Batch Executive product data sheet for details.

To locate a sales office near you, visit our website at:

www.EmersonProcess.com

Or call us at:

India: +91 22 66620566

Asia Pacific: 65.6777.8211

Office Address:

Emerson Process Management (India) Pvt. Ltd.
 Delphi B-Wing,
 601-602, 6th Floor, Central Avenue,
 Hiranandani Business Park,
 Mumbai-400076

© Emerson Process Management 2016. All rights reserved. For Emerson Process Management trademarks and service marks, go to: <http://www.emersonprocess.com/home/news/resources/marks.pdf>.

The contents of this publication are presented for informational purposes only, and while every effort has been made to ensure their accuracy, they are not to be construed as warranties or guarantees, express or implied, regarding the products or services described herein or their use or applicability. All sales are governed by our terms and conditions, which are available on request. We reserve the right to modify or improve the design or specification of such products at any time without notice.



DELTA V

www.DeltaV.com



EMERSON
 Process Management