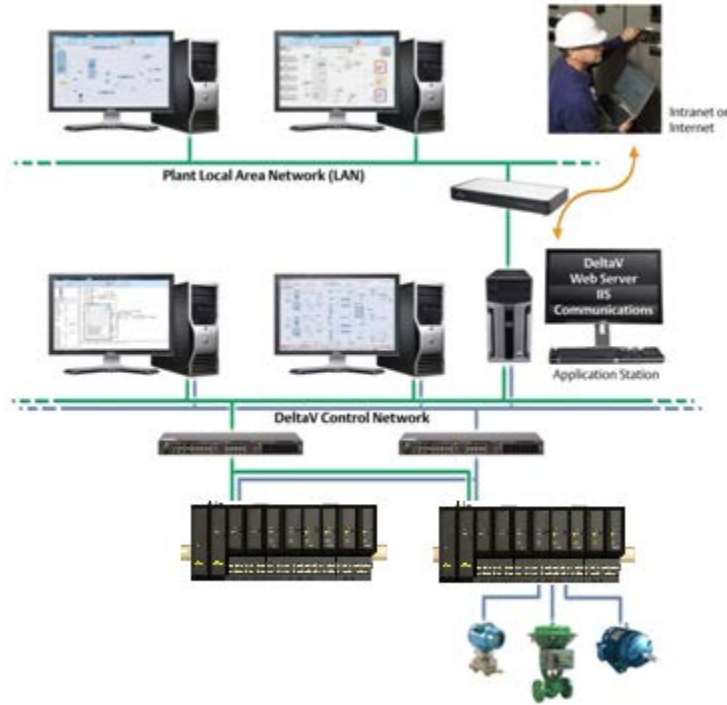


DeltaV™ Web Server



Use the DeltaV Web Server to view your process anywhere on the planet.

- Gives you a secure view of your process from your desktop PC
- Offers more information and scalable architecture from a modular extensible structure
- Allows viewing and combining different types of information with little or no training

Introduction

DeltaV™ Web Server allows you to view plant graphics, events, access historical data, and real time trends from your web browser. You can access information from your office or from any remote PC that can make a secure connection to your plant network and access the WebServer workstation.

Emerson Process Management puts intranet technology to work in your plant, bringing new dimensions of dynamic information and simplicity to your desktop PC.

Working with existing tools like Microsoft Excel and Word, the DeltaV Web Server lets you view and combine different types of information with little or no training. The value of widespread information can be an incalculable asset in your plant, giving decision-making tools to the people closest to the process, and giving them the power to make the right decisions!

Benefits

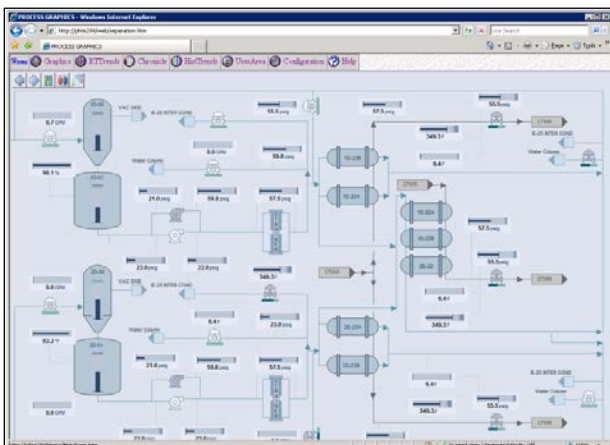
Gives you a secure view of your process from remote sites via the Internet. The DeltaV Web Server combines off-the-shelf software and smart web pages to make calling up your plant's process information as easy as calling up any website using your web browser. The DeltaV Web Server connects to the DeltaV system using OPC. Since the DeltaV Web Server is view only, there is no chance of a remote user inadvertently changing the plant operation. Further protection is provided by the DeltaV OPC Data Server to prevent errant messages from entering the DeltaV system. For those seeking further protection, firewalls, routers and operating system security may be deployed as well. Plant information, such as process graphics, history trends and real-time trends, is available. It's just like calling up a favorite web site—and the pages are updating in real-time!

Offers more information and scalable architecture from a modular extensible structure.

Easily connecting to all of your plant information is great, as long as only authorized users are able to access the system. The Web Server's security scheme makes sure that access is controlled but unobtrusive. Double-clicking your web browser icon starts the Internet Explorer and brings up the plant home page. You can set up security to grant or deny access to individual modules, thereby giving each user the information needed, without compromising security. Modular extensible structure provides more information and scalable architecture. The DeltaV Web Server is designed to be scalable—in size and functionality—to meet your needs.

Allows viewing and combining different types of information with little or no training.

The Web Server is available in several user options so that your whole plant benefits from the readily accessible information, or you may elect to limit the functionality to a smaller community. The Web Server has been structured in modular form to facilitate expansion.



Use the Microsoft Internet Explorer to view dynamic plant information.

Product Description

The Web Server is a modular product with the base package providing the menus, framework, and security system. Each module contains one or more Emerson Process Management smart web pages to present the data in an easy-to-understand format. The base product includes these modules:

- *Process Graphics*—allows view to graphics displays from the process automation system
- *Events*—lets you see recent events or alarms
- *Historic Trends*—shows trend graphs with values gathered from a DeltaV Historian
- *Real-time Trends*—allows view of plant trends as they update

The DeltaV Web Server is a thin client application, so you need no special software, drivers, or custom applications to use it. Remote viewing of your plant operation is simple: you, access the designated address for your WebServer, and begin viewing your DeltaV process information. For security purposes, access to the WebServer requires the user to have a DeltaV user account so they can log into the WebServer even to view data.

Process Graphics

You can pull up a process graphic-based web page for a snapshot of current, real-time process conditions—to see what's going on in the plant right now, with the current data values. These values update, refreshing with live data as quickly as every couple of seconds.

In order to use DeltaV process graphics with the Web Server, you simply use the supplied utility program to convert your graphics-based plant information displays into a format that the Web Server can use. Once converted, the graphics can be viewed on any web browser that has access to the Web Server. Any simple, non-complex graphic elements in your DeltaV displays are converted automatically, and they will appear through the Web Server just as they do when viewed in the DeltaV system. Complex displays used in the operator interface will not automatically convert in many cases. The DeltaV Web Server does not support the scripting language of the process graphics. Items that use scripts such as buttons, popups, custom scripts, etc., must have these links simplified prior to conversion.

The Web Server will allow you to use your existing operator interface graphic displays as the basis for providing real-time process information to your plant management team. Graphics can be created using the standard DeltaV configuration tool to provide a custom view for management or other non-operator personnel. To provide optimal performance displays to be converted for the Web Server should contain only the top-level real-time process data.

Historic Trends

In addition to process graphics and events, you can look at historic trend information. Up to four trends may be viewed simultaneously. With the DeltaV Historian access functions, you review historical data and recent trends in your automation system. All historical data that is collected locally on the Web Server Application Station can be viewed on the browser.

Real-time Trends

The Web Server can also sample your current local tag values (i.e. tag values local to the Application Station) to create real-time trends that update every several seconds. Up to four real-time trends may be viewed simultaneously.

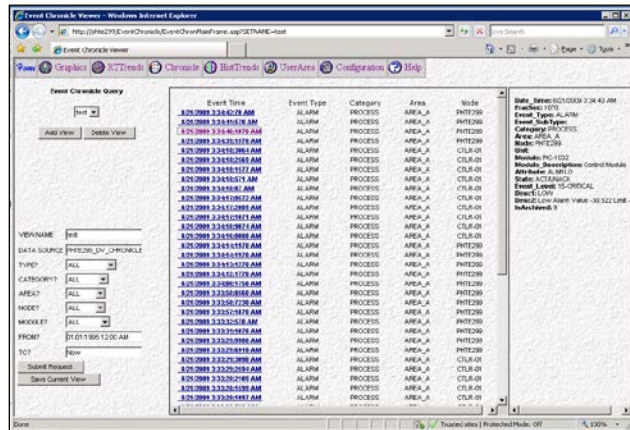
Web Server Deployment

With the DeltaV Web Server you can use your web browser to access your operations. The DeltaV Web Server was built to work with Microsoft Internet Explorer.

Many users have expressed the need for secure communications. You can securely access your plant's production data and other documents from anywhere on earth when you use appropriate protection (e.g. firewalls, routers, VPN access, and operating system security protection). All remote access to the WebServer should be done by the remote user making a secure connection to the plant LAN and then connecting to the WebServer.

In order to connect to the DeltaV Web Server, the user must make a Web Server connection. The browser connection to the DeltaV Web Server is based on a 24-hour period and is specific to the IP Address of the client connecting. That Web Server connection will stay consumed by that specific IP address computer for 24 hours after the user logs off the Web Server or is logged off by the server after the inactivity timeout. Therefore, if you log into a WebServer session every day, you become a permanent user of that license and the license cannot be shared with another user on a different computer.

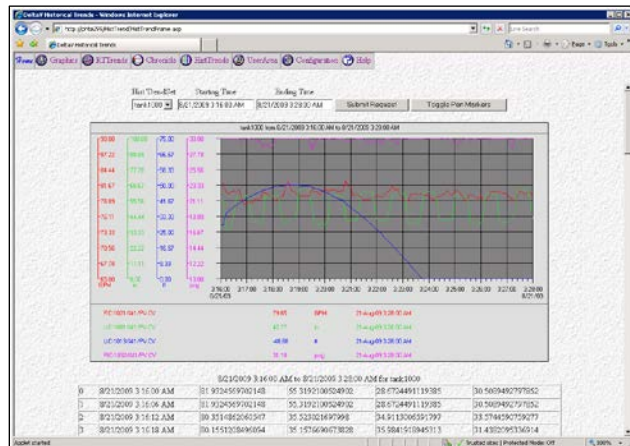
The DeltaV Web Server has been designed to work best with the DeltaV system. The speed at which the client updates is dependent upon several factors, including the speed of the modem connection, speed of the server and client, as well as the amount of memory they have. At this time, the Web Server does not support other OPC servers. While the main elements of the DeltaV Intranet Explorer may work using other browsers, the use of other browsers and other operating systems is not supported.



DeltaV Web Server showing alarms and events

Events

The DeltaV system's alarm history feature lets you view alarms through your browser so that you can respond instantly to an alarm situation or analyze process events from your desktop. All alarm and event data that is collected locally on the Web Server Application Station can be viewed on the browser.



Historical trends in the Web Browser.

Extensibility of the DeltaV Web Server highlights a great feature of the system. Microsoft Word and Excel viewers are available free (at the time of this publishing) from Microsoft's web page located at <http://www.microsoft.com>. These are ideal for viewing important plant documents such as material safety data sheets or standard operating

procedures. Imagine the convenience of having all your documentation, MSDS documents, and CAD drawings—throughout the plant—accessible from your PC.

Ordering Information

Description	Model Number
Web Server (2 user)	CE2231S02
Web Server (10 users)	CE2231S10
Web Server (25 users)	CE2231S25
Web Server (2 to 10 user scale-up)	CE22UPS012
Web Server (10 to 25 user scale-up)	CE22UPS013

Related Products

- **Application Station Software Suite.** Integrate your DeltaV system with 3rd party systems and applications on a DeltaV workstation. Includes a scalable DeltaV Continuous Historian and DeltaV OPC Data Access Server.

Related Hardware Products

DeltaV Workstation Hardware. Select from a variety of PC and server hardware, tested and preloaded with DeltaV software

Not Supported Products

- **Fault Tolerant Server.** A solution for high availability workstations to prevent data loss or interruption of critical control activities.

Prerequisites

- DeltaV Application Station Software Suite must be used with the license sized to fit the amount real-time data to be displayed.
- Server-class computer loaded with Microsoft Server 2003 or Server 2008 on the Application Station. Microsoft Internet Information Server must be loaded (included in Server 2003).
- Client machines accessing the DeltaV Web Server must meet the following requirements in order to view the DeltaV Web Server web pages.
 - Microsoft Internet Explorer
 - Microsoft Windows

To locate a sales office near you, visit our website at:

www.EmersonProcess.com/DeltaV

Or call us at:

Asia Pacific: 65.6777.8211

Europe, Middle East: 41.41.768.6111

North America, Latin America: +1 800.833.8314 or
+1 512.832.3774

For large power, water, and wastewater applications

contact Power and Water Solutions at:

www.EmersonProcess-powerwater.com

Or call us at:

Asia Pacific: 65.6777.8211

Europe, Middle East, Africa: 48.22.630.2443

North America, Latin America: +1 412.963.4000

© Emerson Process Management 2013. All rights reserved. For Emerson Process Management trademarks and service marks, go to:
<http://www.emersonprocess.com/home/news/resources/marks.pdf>.

The contents of this publication are presented for informational purposes only, and while every effort has been made to ensure their accuracy, they are not to be construed as warranties or guarantees, express or implied, regarding the products or services described herein or their use or applicability. All sales are governed by our terms and conditions, which are available on request. We reserve the right to modify or improve the design or specification of such products at any time without notice.



www.DeltaV.com

