



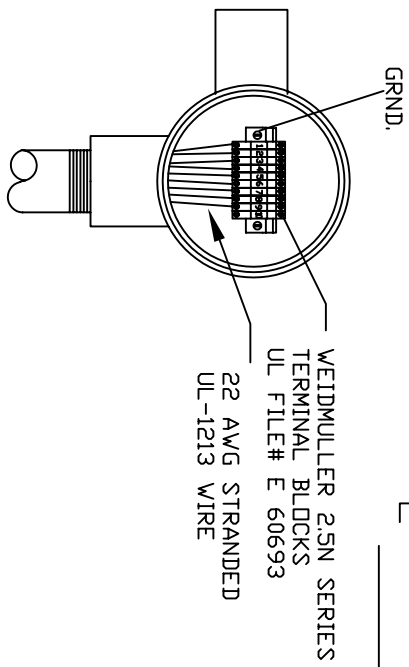
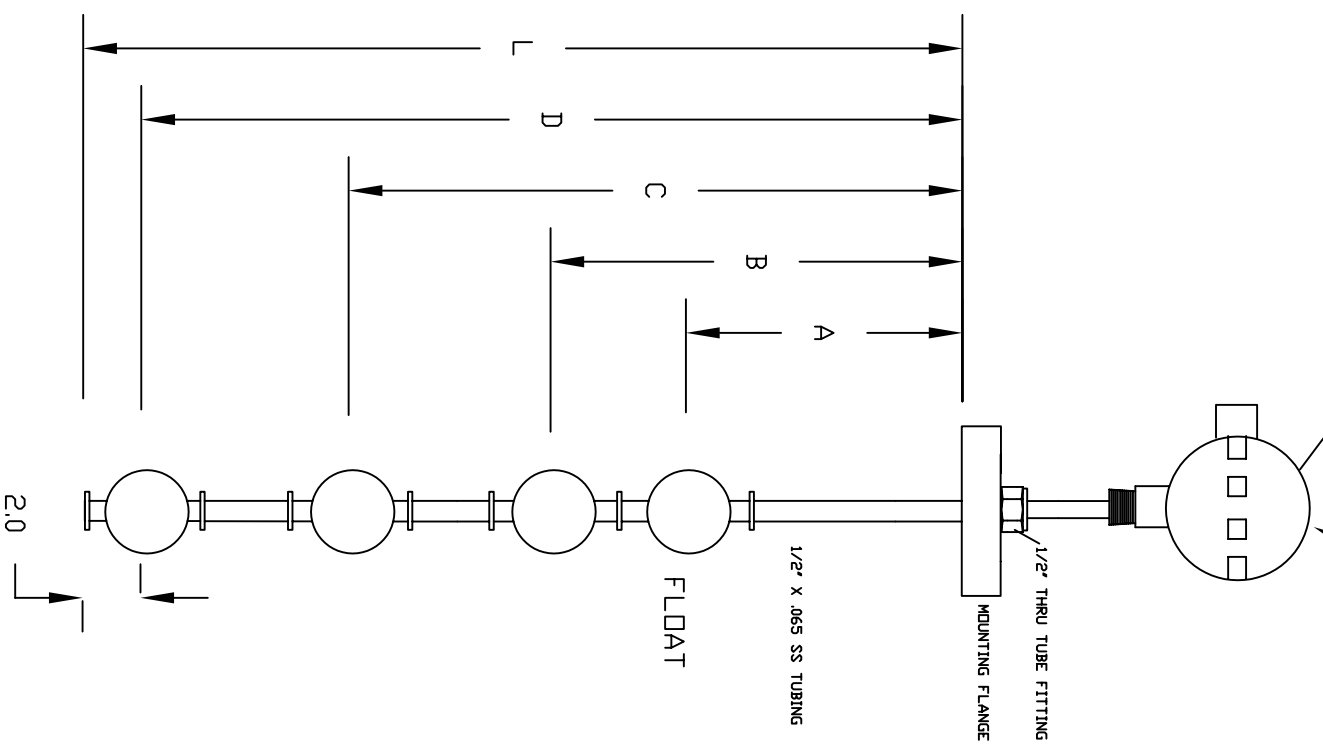
3902 Magnolia Rd
Pearland, Texas. 77584
Phone: 281-488-0788
FAX: 281-488-7080
E-mail: magtech@isemagtech.com
Website: www.isemagtech.com

MLS – 4EX SERIES

MULTI-LEVEL FLOAT SWITCH

INSTRUCTION MANUAL

APPLETON GRL-50A
 UL STANDARD 986
 FILE # E-10444



DIMENSIONS:

A _____

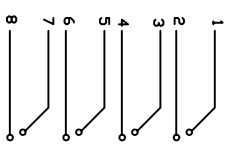
B _____

C _____

D _____

L _____

WEIDMULLER 2.5N SERIES
 TERMINAL BLOCKS
 UL FILE# E 60693
 22 AWG STRANDED
 UL-1213 WIRE



TYPICAL WIRING SCHEMATIC

CUSTOM FLANGE MOUNTING
 ALL 316SS WETTABLE PARTS
 VOLTAGE 200VDC MAX
 CURRENT .5 SWITCH
 1.2 CARRY
 TEMPERATURE 125 DEG. C
 257 DEG F
 FORM A CONTACT

- MLS-4EX-A = 1 POINT
- MLS-4EX-B = 2 POINT
- MLS-4EX-C = 3 POINT
- MLS-4EX-D = 4 POINT

MagTech		907 BAY STAR BLVD. WEBSTER, TEXAS 77598	
DIVISION OF ISE OF TEXAS, INC.		DRAWN BY WLD	
SCALE: NONE	APPROVED BY:	REVISED	
DATE: 3-10-94			
MLS-4EX-A,B,C OR D			
DRAWING NUMBER		EALARM1	

Switch Operation & Mounting

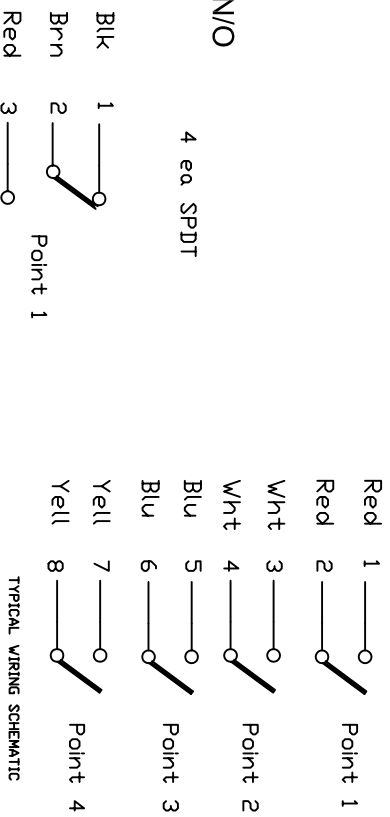
The MLS-4EX needs to be mounted vertically in the tank or vessel. Standard mounting is a 2" MNPT hex plug, however, other mounting configuration are also available (i.e flanged)

The standard switches are SPST; they can be changed from N/C to N/O or N/O to N/C by simply adjusting the float stops while observing an Ohm meter connected to the terminal or the wires to monitor contact closure.

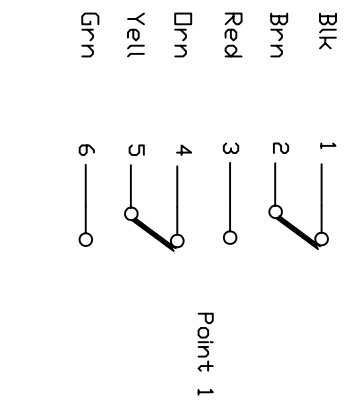
Optional Switches are SPDT and DPDT.

NOTE: For DPDT only 2 set points are available.

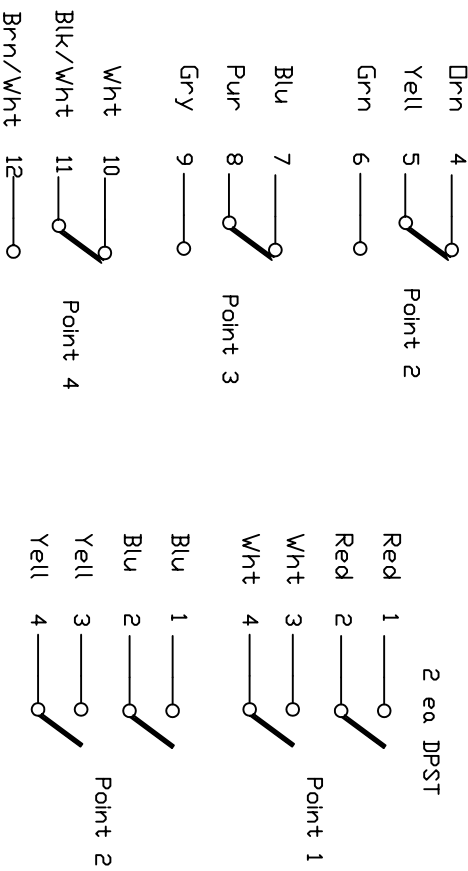
4 ea SPST



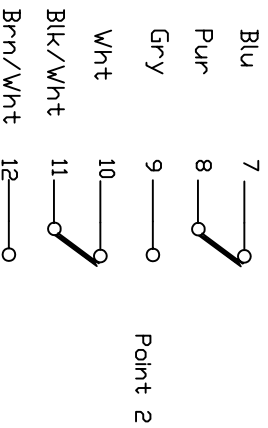
2 ea DPDT



2 ea DPST

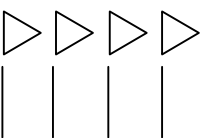


TYPICAL WIRING SCHEMATIC



TYPICAL WIRING SCHEMATIC

REVISION LEVEL



MagTech

907 BAY STAR BLVD.
WEBSTER, TEXAS 77598
281-488-0788

CHECKED: DATE: 12/28/07

APPROVED BY: S.S.

DRAWN BY SSC
SCALE NONE

MLS-4EX Switch

FILE NUMBER

THIS DRAWING CONTAINS PROPRIETARY INFORMATION. PLEASE DO NOT DUPLICATE OR CIRCULATE.

DRAWING NUMBER
MLS