

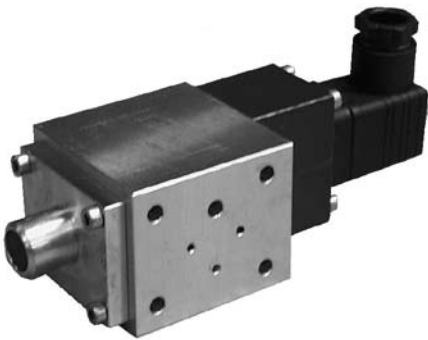
Product Data Sheet

SD 4200-2E01

August 2008

Damcos® DPI-B

Direct hydraulic open/closed position indicating system



DAMCOS®


EMERSON™
Process Management

Damcos® DPI-B

Advantages

- Direct return message from the actuator.
- Hydraulic system allowing continuous submerged duty or safe operation in a hazardous area.
- No installation costs when used with double acting actuators.

Description

The system uses the flow of oil in the actuator control line to give an indication of valve position. The oil flow is controlled by the bypass valve that is operated by an internal cam. While the actuator is in its middle position, the bypass valve will be open for flow in either direction. When the actuator reaches its end position, a non-return valve in the bypass prevents further oil flow. The direction of flow is registered in the flow indicator.

Even if the actuator does not move, oil will continue to flow through the bypass non-return valve and will be registered by the flow indicator spool. It will remain in this position until the actuator reaches end position and the bypass valve is closed to prevent further oil flow. This will be registered by the indicator moving to its neutral middle position.

Components

The system consists of two main components:

- the by-pass valve and the flow indicator.

The bypass valve is fitted direct on the actuator and is operated by a cam on the actuator stem.

The bypass valve is built into a block, which also acts as a supply manifold for the actuator. The spool type flow indicator is supplied as a separate unit mounted in the solenoid valve rack.

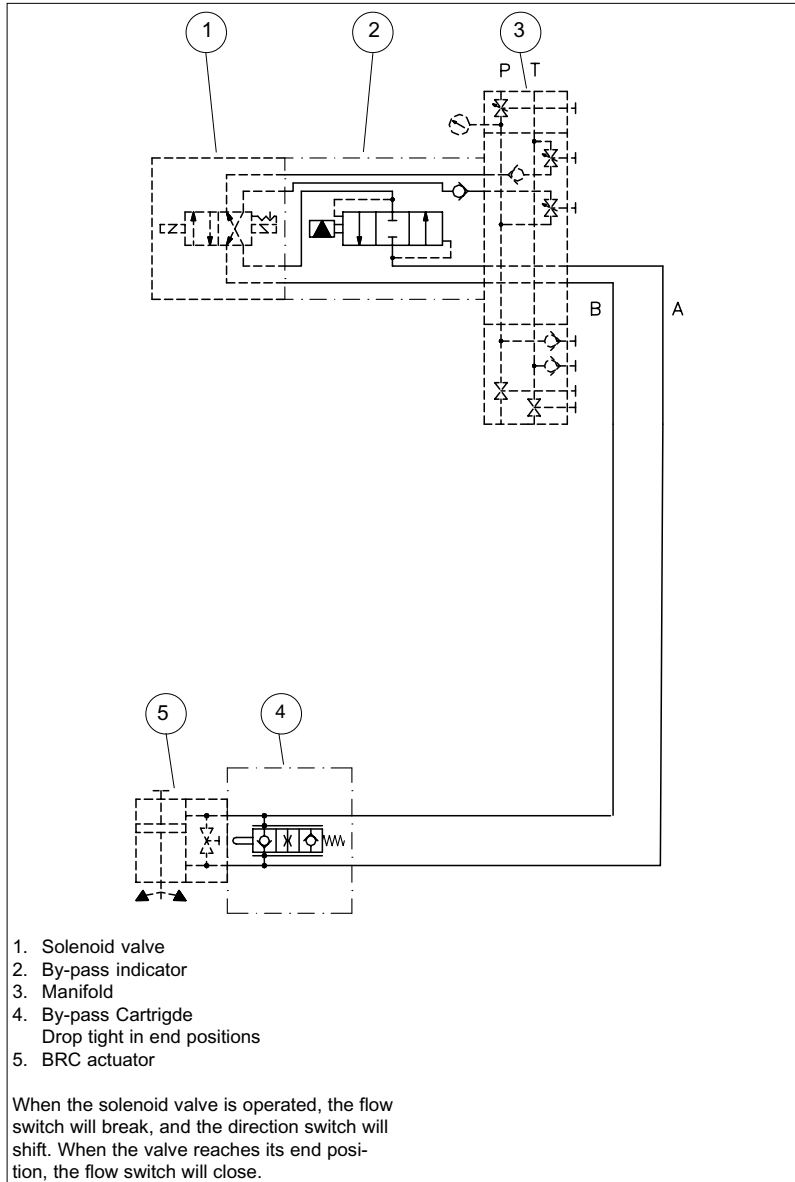
Electric hydraulic control

The flow indicator is built into the control valve rack and will give local visual indication. An electronic switch unit is fitted direct on the back of the flow indicator to give impulses to initiate lamp diodes fitted in the control panel,

or give secondary signals for computer input. The indication lamps can be arranged to burn continuously when the control command has been fulfilled and will flash while the valve under control remains in a middle position.

Damcos® DPI-B

Hydraulic diagram



The Emerson logo is a trademark and service mark of Emerson Electric Co. Damcos and the Damcos logotype are registered trademarks of Damcos A/S. All rights reserved. The contents of this publication are presented for information purposes only, and while effort has been made to ensure their accuracy, they are not to be construed as warranties or guarantees, expressed or implied, regarding the products or services described herein or their use or applicability. All sales are governed by our terms and conditions, which are available upon request. We reserve the right to modify or improve the designs and specifications of our products at any time without notice. Damcos A/S accepts no responsibility for any errors that may appear in this publication.

This product is developed and managed by:
Emerson Process Management

Damcos A/S
 Aaderupvej 41
 DK-4700 Naestved
 T +45 5578 7200
 F +45 5578 7272

For global contacts:

www.EmersonProcess.com/marine