

## Product Data Sheet

SD 3201-2E01

August 2008

Damcos® TR-3

# TR-3, throttle block

## Description

A throttle block should always be incorporated in the hydraulic control system as the function of this block is to control the speed of the DMS actuators.

The flow adjustment is done by turning the adjustable needle valve. Clockwise rotation increases the throttling, which is done on the B-line.

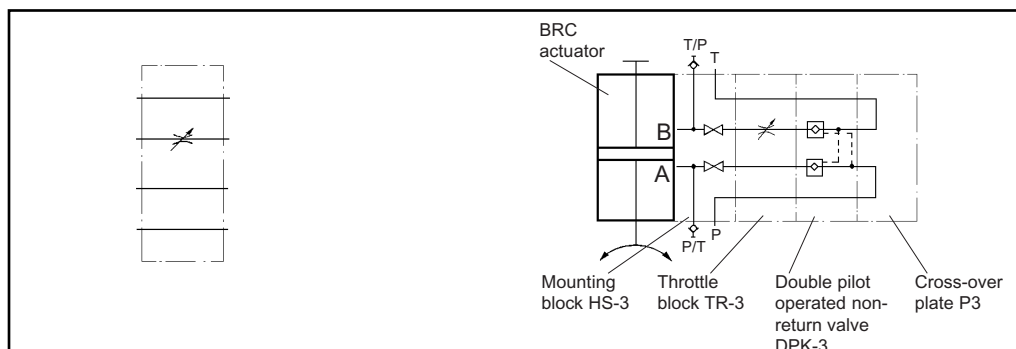
The throttle block has Cetop-3 connection.



## Technical specification

Max. working pressure:	210 bar/ 3000 lbf/in <sup>2</sup>
Max. test pressure:	315 bar/ 4500 lbf/in <sup>2</sup>
Weight approx:	1.0 kg/ 2.2 lb
Materials:	Body of brass
	Valve and fastening bolts of stainless steel

## Hydraulic symbol and application example

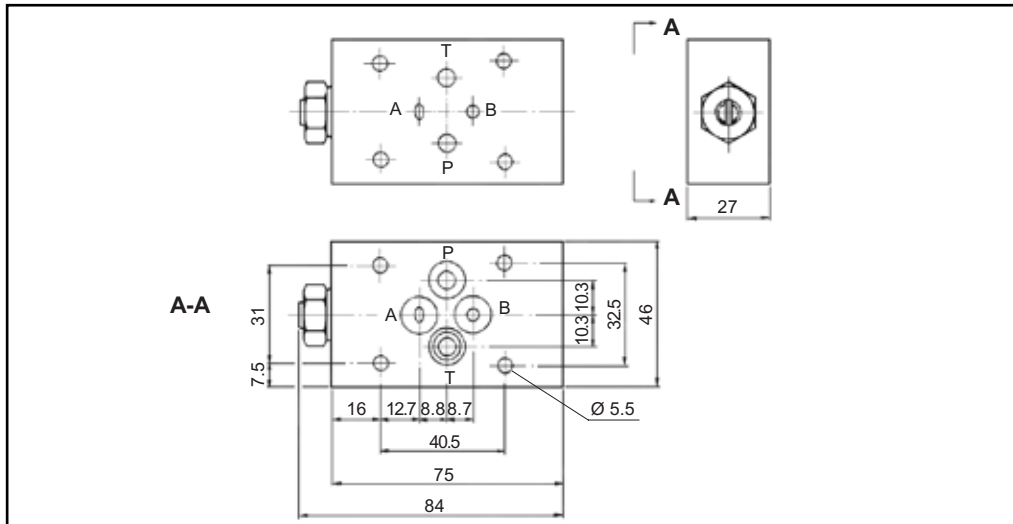


**DAMCOS®**

  
**EMERSON™**  
Process Management

## Damcos® TR-3

## Main dimensions



The Emerson logo is a trademark and service mark of Emerson Electric Co. Damcos and the Damcos logotype are registered trademarks of Damcos A/S. All rights reserved. The contents of this publication are presented for information purposes only, and while effort has been made to ensure their accuracy, they are not to be construed as warranties or guarantees, expressed or implied, regarding the products or services described herein or their use or applicability. All sales are governed by our terms and conditions, which are available upon request. We reserve the right to modify or improve the designs and specifications of our products at any time without notice. Damcos A/S accepts no responsibility for any errors that may appear in this publication.

This product is developed and managed by:  
Emerson Process Management

Damcos A/S  
Aaderupvej 41  
DK-4700 Naestved  
T +45 5578 7200  
F +45 5578 7272

For global contacts:  
[www.EmersonProcess.com/marine](http://www.EmersonProcess.com/marine)