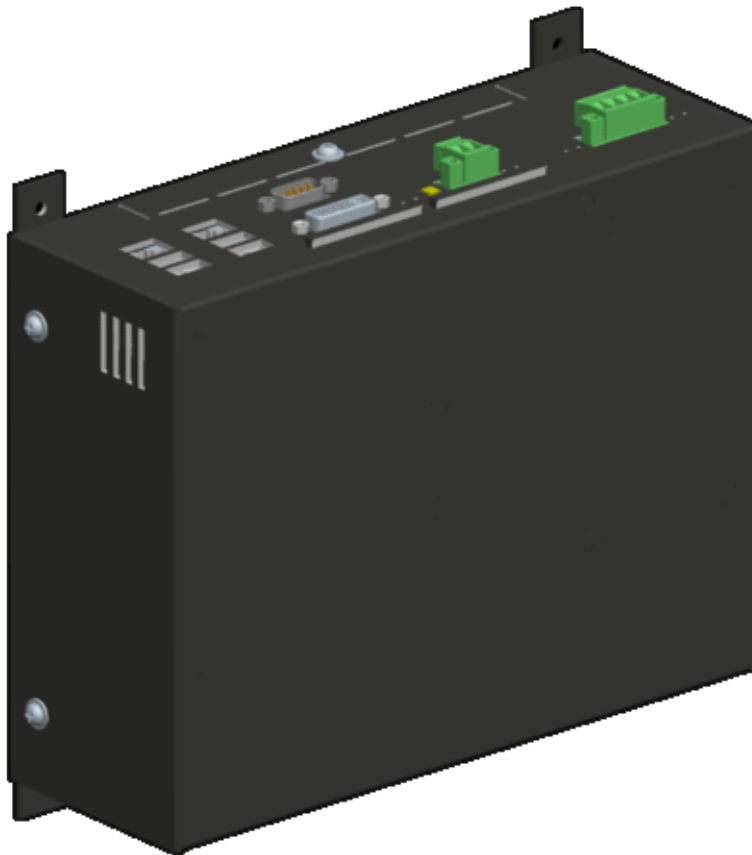


Vision CPU

Vision CPU for Workstation

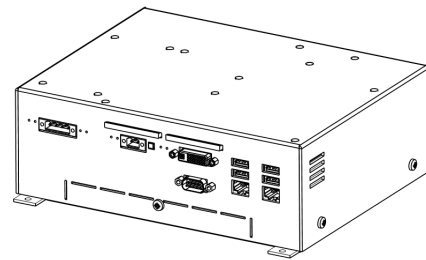


Introduction

The Vision Workstation CPU features a fanless quad-core Atom CPU at 1.9Ghz, dual Ethernet (1Gb/s) and a redundant 24 VDC power supply.

The cabinet design supports stand-alone mounting as well as mounting on the back of the Vision monitor series. The cabinet acts as the CPU's heat sink, making it fanless and with no moving parts.

The operating range is from -25°C to +70°C making it ideal for use in panels and cabinets with restricted air-flow.

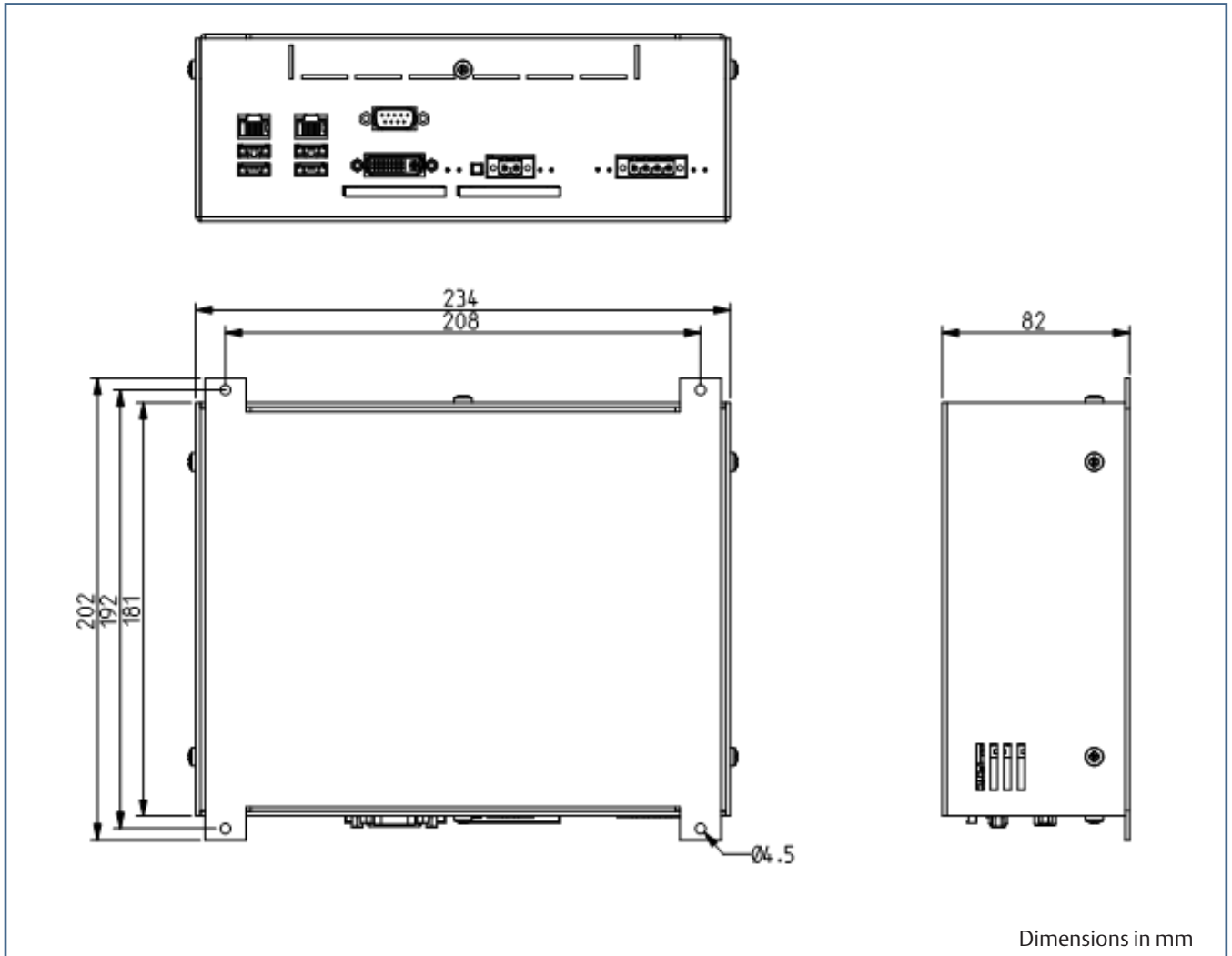


Features

- Robust design adapted for the marine environments
- Software controlled output for relays or buzzer
- Dual CFAST SSD
- Redundant dual ethernet
- Redundant 2 x 24VDC
- Auxiliary COM port RS232/RS485
- Backward compability with older Vision Systems
- Hardware watchdog

Item/Type	No.	Description
Vision CPU	165B9168	Vision CPU for Workstation

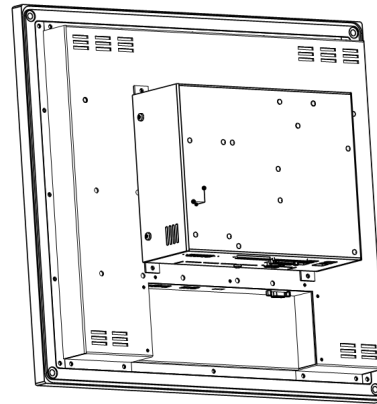
Dimensions



Vision CPU Mounted on Vision Monitors

The Vision CPU fits easily on the back of all the Vision Monitor series.

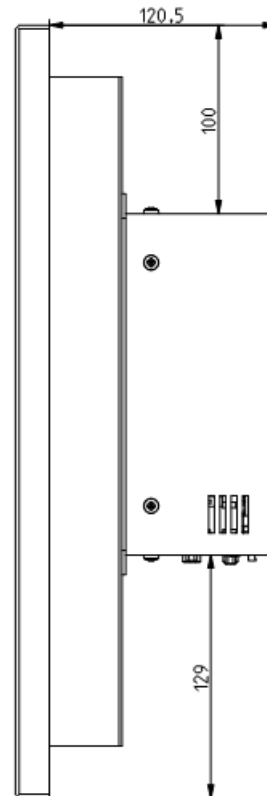
Assembly is done by fixing the CPU-box with four screws to the back of the monitor. Short link-cables for display and USB touch are available for compact fit.



Side view of Vision 17 with Vision CPU mounted on back.



Side view of Vision 19/24 with Vision CPU mounted on back.

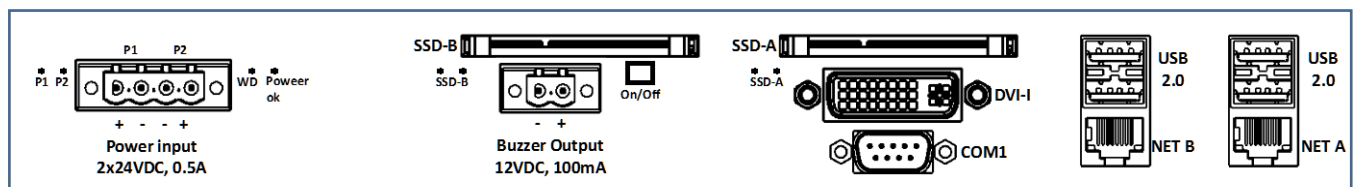


Dimensions in mm

Technical Specifications

Vision Workstation CPU		
CPU specifications	Intel® Atom™ Processor E3845 (2M Cache, 1.91 GHz), 4GB RAM	
Operating system	Windows Embedded Standard 7	
Supported display resolutions	VGA	640 x 480
	SVGA	800 x 600
	XGA	1024 x 768
	SXGA	1280 x 1024
	UXGA	1600 x 1200
	FHD	1920 x 1080
	WUXGA	1920 x 1200
I/O connectors	Display	DVI-I (DVI and VGA)
	USB	4 x USB 2.0 Type A
	Net	2 x Ethernet (10/100/1000) RJ-45
	SSD	2 x CFast, 8 GB
	COM	1 x RS232/RS485
	Aux digital output	12 VDC, max 100 mA, 2-pin terminal-block
Power controls	ATX power on/off button	
	Resume after power loss.	
Power supply and consumption	Power input	2 x 24 VDC (18 - 32 VDC, common ground)
	Consumption	5 - 10 W (Idle - full load)
Physical specifications	Dimension	234 x 181 x 82 mm
	Weight	1.5 kg
Environmental specifications	Operating	-25° to +70° C, 95% humidity (for maximum lifespan, an operation temp. from ±0° to +40° C is recommended)
IP-rating	IP 20	
Approvals	Conform to IACS-E10 (2006) and IEC 60945 (En 60945-2002) To be type approved by DNV-GL, LR, BV, ABS, KR, RINA and CCS	

I/O Panel - Connectors, Disks and LED's



Emerson Process Management

Damcos A/S
Aaderupvej 41
DK-4700 Naestved
T +45 5578 7200
F +45 5578 7272

www.EmersonProcess.com/mtm

Emerson Process Management

Rosemount Tank Radar AB
Box 13045
SE-40251 Sweden
T +46 31 337 00 00
F +46 31 25 30 22

www.EmersonProcess.com/mtm

©2015 Emerson Process Management. All rights reserved.

The Emerson logo is a trademark and service mark of Emerson Electric Co. Damcos® and the Damcos logotype are registered trademarks of Damcos A/S, Rosemount® and the Rosemount logotype are registered trademarks of Rosemount Inc. Damcos A/S and Rosemount Tank Radar AB are members of the Emerson Process Management family of companies. All other marks are the property of their respective owners.

The contents of this publication are presented for information purposes only, and while effort has been made to ensure their accuracy, they are not to be construed as warranties or guarantees, expressed or implied, regarding the products or services described herein or their use or applicability. Standard Terms and Conditions of Sale can be issued by contacting Damcos A/S or Rosemount Tank Radar AB. We reserve the right to modify or improve the designs and specifications of our products at any time without notice.

Damcos A/S and Rosemount Tank Radar AB accepts no responsibility for any errors that may appear in this publication.