

EDUCATIONAL SERVICES

Maximize your Investment!



Micro Motion® Online Instrument & Electrical (I&E) Technician Course

Course: E2353E

Course Length: Approximately 5-6 hours to view the content and take the assessments.

Delivery Method: Online, via any public internet connection. Each student is provided a unique login and password to enable tracking, reporting and documentation of their progress.

Price: \$400 per individual student login for access of 1 year. To discuss any other custom online training needs, please contact your local Micro Motion® sales representative.

Payment Method: This course is purchased online by going to the Emerson Process Management Educational Services EStore. Payment can be made by credit card or by providing a purchase order.

Why Consider Emerson's Micro Motion Online Training?

The pressures associated with reduced staffing levels, keeping the process running, and at the same time keeping your technicians trained are a significant challenge. Having your technicians attend an all day training class, even if the class is held locally or at your plant site may not be possible. For these reasons, online training is becoming an attractive alternative to replace, or to complement, face-to-face training.

Micro Motion's Online Instrument & Electrical Training Course allows your technicians to learn at a time that is convenient for them. Even if your technicians have attended one of our instructor lead training courses they may not have had a chance to apply those skills. This online content provides just-in-time refresher learning that can be immediately applied.

The content in these training courses was developed by Micro Motion Senior Technical Support Engineers and it is based on their extensive years of experience assisting customers. The modules are professionally narrated and are interactive. The modular design of the content also provides the flexibility to view it as a full curriculum or as a refresher on specific topics.

Learning Objectives:

After viewing this course content the student will be able to do the following:

- Explain the principle of operation for how a Micro Motion Coriolis meter works and explain the function of the key components
- Apply the installation best practices for orienting, mounting and wiring the sensor and transmitter
- Establish communication between the configuration tools and transmitter, and navigate to the key configuration fields
- Follow a step by step process to perform a basic configuration and final check out of a Micro Motion meter in your installation



Emerson Educational Services
800 338 8158 or 641 754 3771
Email: education@emerson.com
Website: www.emersonprocess.com/education



EDUCATIONAL SERVICES

Maximize your Investment!



Description:

This online course is made up of a total 26 topics that cover basic installation, wiring and configuration of a Micro Motion 2700 transmitter with configurable input/outputs and any compatible Micro Motion sensor series. It mirrors both our instructor lead training courses as well as the information that is presented in our installation and configuration manuals. An online resource page has also been created that conveniently links to documents, tools and videos that represent the information a technician typically would need.

All of the modules are professionally narrated. Each module has a short overview of each step of the installation and commissioning process. These then followed by modules that provide the viewer an interactive experience for using the four configuration tools (ProLink III, AMS Device Manager, HC475 Field Communicator or integral display on the transmitter) The viewer can select the content for whichever configuration tool they use. Assessments have also been created to reinforce learning and provide tracking of the student's progress, if that is desired.

For your reference, Appendix I lists the full set of curriculum topics and Appendix II shows representative screen shots of the key content elements. Demos can be found on the Emerson Process Management Educational Services EStore.

Prerequisites:

None required: However, basic understanding of the fundamentals of flow measurement, electricity, working with analog and frequency signal processing, are assumed.

Target Audience:

This online training offering is specifically designed to help and educate individuals who are responsible for startup and maintenance of Micro Motion Coriolis meters. These can be individuals involved in properly installing, wiring, configuring and troubleshooting a Micro Motion Coriolis meter. Typical job functions include: maintenance and instrument technicians or engineers with these responsibilities.



Emerson Educational Services
800 338 8158 or 641 754 3771
Email: education@emerson.com
Website: www.emersonprocess.com/education



EDUCATIONAL SERVICES

Maximize your Investment!



Micro Motion® Online Instrument & Electrical (I&E) Technician Curriculum (Appendix I)

Coriolis Meter Fundamentals

- Theory of Operation + **Assessment**
- Installation Best Practices + **Assessment**

Wiring Sensor to Transmitter

- Wiring Sensor to Transmitter
- Connecting Power, Inputs, & Outputs, Applying Power to the Transmitter
- Wiring the Configuration Tools to the Transmitter
-I&E Assessment #1

Connection & Use of Configuration Tools with 2700 Transmitter

- Establishing Communication between the Configuration Tools and Transmitter
- Navigation of Configuration Tools Menus
-I&E Assessment #2

Configure Process Measurements

- Characterize the Flowmeter
- Configuring Flow Measurement for Liquids
- Configuring Flow Direction and Damping
- Configuring Density Measurement and Slug Flow Limits
- Configuring Temperature Measurement
-I&E Assessment #3

Integrate the Meter with the Control/Operating System

- Configuring the Input & Output Channel Assignments
- Configuring Milliamp Outputs
- Configuring Frequency Outputs
- Configuring Output Fault Conditions
- Configuring Digital Communications
- Performing a Loop Test
- Trimming Milliamp Outputs, if required
-I&E Assessment #4

Configure Device Options & Meter Information

- Operating & Viewing Process Variables
- Enabling & Disabling Actions and Security
- Working with Process & Inventory Totals
- Configuring Informational Parameters
-I&E Assessment #5

Final Checkout

- Zeroing the Flowmeter
- Final Checkout Under Process Conditions
- Backup/Save the Transmitter Configuration
-I&E Assessment #6



Emerson Educational Services
800 338 8158 or 641 754 3771
Email: education@emerson.com
Website: www.emersonprocess.com/education



EDUCATIONAL SERVICES

Maximize your Investment!



Module Examples (Appendix II)

Fundamental Modules:



Theory of Operation



Installation Best Practices

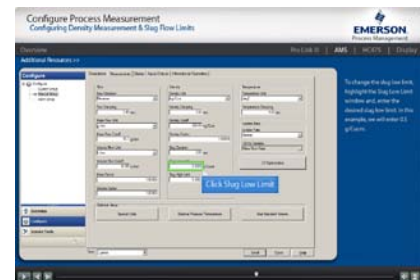
“How to” Modules:



Overview



ProLink® III



AMS



HC475



Local Display



Emerson Educational Services
 800 338 8158 or 641 754 3771
 Email: education@emerson.com
 Website: www.emersonprocess.com/education

