

# EDS™ Mobile

## Features

- A comprehensive, integrated view of one or more control systems from a mobile hand-held device
- EDS mobile is available for quick download to any smartphone or smart tablet
- Provides access to key performance indicators from anywhere with a 4G or Wi-Fi signal
- Remotely view live data, process graphics, trends and alarms
- Access to archived plant data
- Options available for high-availability servers, server virtualization, mirrored servers and data diodes



## Introduction

EDS mobile is an extension of Emerson's proven EDS technology, which provides remote users with a high-fidelity representation of what the operator sees in the control room from a hand-held device.

More specifically, EDS gathers information from control systems at a single unit or fleet of units, as well as from other enterprise systems into one place, presenting near real-time data such as read-only process diagrams, alarm lists and trends. Historical data can also be accessed through this remote visualization tool.

This mobile application gives executives, managers, supervisors and engineering analysts flexibility in managing operations when they are away from their offices.

## Features

EDS mobile enables easy navigation through a multi-level enterprise hierarchy spread across different geographic locations. This application provides a dynamic view of plant assets while adhering to corporate cybersecurity provisions.

High-level key process data is presented on the mobile device can include real-time point information, alarm details and graphics as well as historical plots.

With EDS mobile, key performance indicators (KPIs) data can be viewed from any remote location with a WIFI connection to the control system's network. KPIs are shown as icons representing:

- Fuel usage
- Plant availability
- Emissions
- Generation revenue
- Efficiency (heat rate)

Each KPI icon contains multiple data points, enabling users to drill down to view detailed information and trends in near real-time. For example, CO<sub>2</sub>, CO, SO<sub>2</sub>, NO<sub>x</sub> and opacity data can be viewed through the emissions widget.

EDS mobile is available on the Apple App Store and for Android devices on the Google Play e-store. The application supports native iOS features and gestures.

## Data Integration

EDS data gateways retrieve and synchronize information from multiple sources including existing EDS servers and other data suppliers.

The EDS mobile server manages distribution of the replicated process values, alarms and displays to users running the EDS mobile application.

The collected EDS information is presented in process and read-only plant views, alarm lists and trends. This one-way data communication process ensures that operating system data stays unaltered and protected.

## EDS Mobile Deployment

### Prerequisites

SureService EDS service

### Optional Features

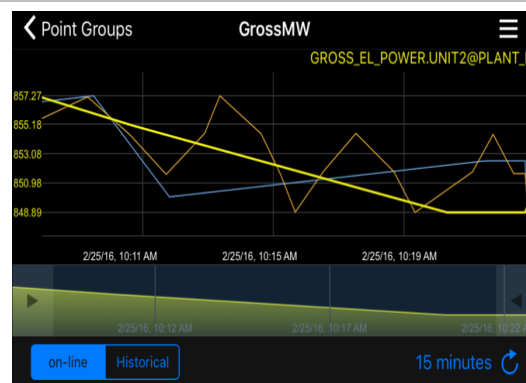
The following are available as options:

- Customized network architectures
- Separate EDS mobile server
- Custom reports
- Firewalls, data diodes and server replication
- High-availability servers, mirrored servers and server virtualization

## Graphic Samples



Easy navigation via the multi-level, custom enterprise hierarchy. The KPI menu populates plant data subsets.



Live trends, multi-pen groups and historical plots.



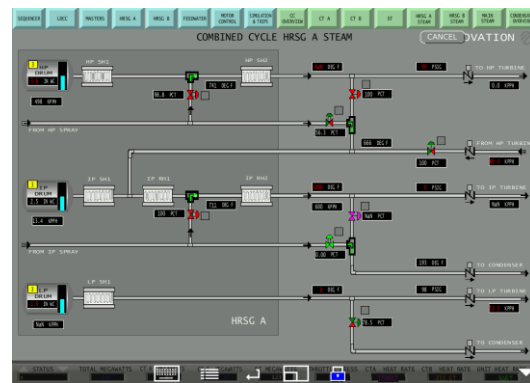
Executive level KPI summary and key process measurements.



Live alarms and historical events

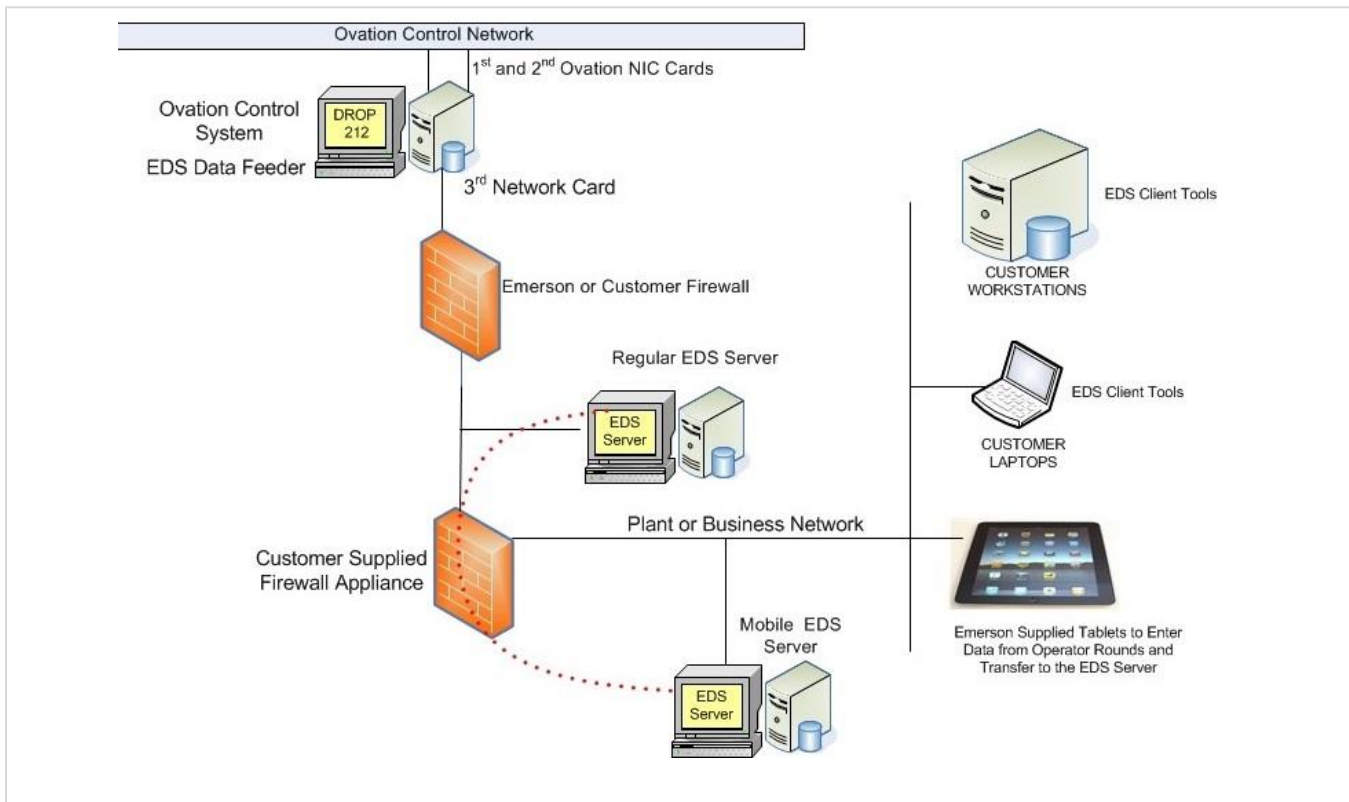


Process data values and descriptions.



Live Ovation graphics (best viewed on tablets).

## Typical EDS network layout in a DMZ



©2017 Emerson. All rights reserved. The Emerson logo is a trademark and service mark of Emerson Electric Co. Ovation™ is a mark of one of the Emerson Automation Solutions family of business units. All other marks are the property of their respective owners. The contents of this publication are presented for information purposes only, and while effort has been made to ensure their accuracy, they are not to be construed as warranties or guarantees, express or implied, regarding the products or services described herein or their use or applicability. All sales are governed by our terms and conditions, which are available on request. We reserve the right to modify or improve the designs or specifications of our products at any time without notice.