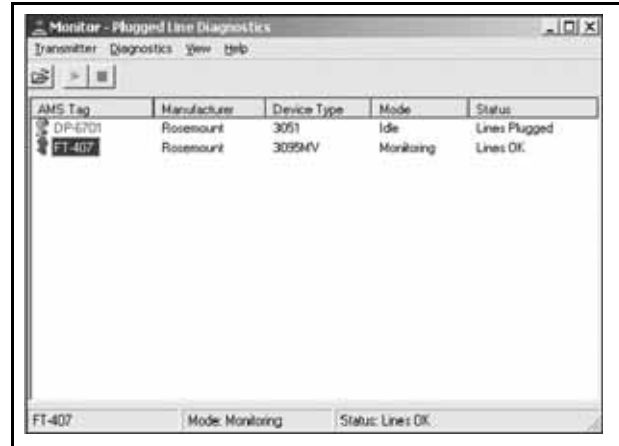


AMS™ Suite: Intelligent Device Manager Plugged Line Diagnostics™ Application

- Detect plugged impulse lines on Rosemount HART® 3051S, 3051C, and 3095 pressure transmitters.
- Alerts signal plugged lines before they become major problems.
- Easily set up transmitters for predictive diagnostics.



An alert clearly indicates a plugged impulse line on one transmitter. Further troubleshooting allows you to intervene quickly to prevent serious problems.

INTRODUCTION

The Plugged Line Diagnostics SNAP-ON application adds value to the AMS Suite: Intelligent Device Manager predictive maintenance software application. Certain process and environmental conditions can cause device impulse lines to plug. The Plugged Line Diagnostics SNAP-ON application monitors Rosemount HART 3051S, 3051C, and 3095 pressure transmitters to alert you of plugged impulse line problems that would otherwise go unnoticed.

The Plugged Line Diagnostics SNAP-ON application delivers predictive maintenance capabilities by alerting you to line plugging issues before they become major problems.

AMS Tag	Manufacturer	Device Type	Mode	Status
DP-6701	Rosemount	3051	Monitoring	Lines OK
FT-407	Rosemount	3095MV	Monitoring	Lines OK

FT-407 Mode: Monitoring Status: Lines OK

An alert clearly indicates a plugged impulse line on one transmitter. Further troubleshooting allows you to intervene quickly to prevent serious problems.

Detect plugged impulse lines

The Plugged Line Diagnostics SNAP-ON application includes a monitoring application that collects data to learn the steady state process for each device. The application verifies that the data is consistent. Once consistent data sets are collected, the application begins to monitor the device for plugged impulse lines.

Alerts signal plugged impulse lines before they become major problems

When the diagnostic algorithms detect plugged impulse lines, an alert is displayed within the SNAP-ON application window. Alerts for multiple devices can be viewed in the “details” view, allowing you to simultaneously see the status of each device. For documentation purposes, alerts are also written to the Audit Trail.

Easily set up Transmitter for Monitoring

Setting up devices for monitoring is easy. Select a Rosemount HART pressure transmitter from your display and launch the Plugged Line Diagnostics Configurator application.

Transmitter Information
AMS Tag: DP-6701
Damping Value should be set to 0.1 second or less.

DPC Server Information
 Local Machine
 Remote Machine: _____

DPC Server Name
DPC Delay: 1

DPC Item ID (Primary Variable)
PLANTWEB/EDT/007/0405/HART_FIELD_VAL07 [Browse]

Percentage Engineering Unit 4.20 m³

Sensitivity
 Low Medium High Monitor Transmitter at SNAP-ON Startup

OK Cancel Help

Requirements

- Plugged Line Diagnostics SNAP-ON Application
- DCS OPC Server that supports browsing
- Rosemount HART 3051S, 3051C, or 3095 Pressure transmitter
- Transmitter damping value of 0.1 or less

Additional Requirements

- Audit Trail to view all historical device alerts within a single window.



AMS Suite: Intelligent Device Manager powers PlantWeb through predictive and proactive maintenance of intelligent field devices to improve availability and performance.

Ordering Information

Model	Product Description
AW7073PLD0005	Plugged Line Diagnostics SNAP-ON Application up to 5 devices
AW7073PLD0025	Plugged Line Diagnostics SNAP-ON Application up to 25 devices

*Rosemount and the Rosemount logotype are registered trademarks of Rosemount Inc.
PlantWeb, AMS, SNAP-ON and Plugged Line Diagnostics are marks of one of the Emerson Process Management group of companies.
All other marks are the property of their respective owners.*

Emerson Process Management

Rosemount Inc.
8200 Market Boulevard
Chanhassen, MN 55317 USA
T (U.S.) 1-800-999-9307
T (952) 828-3206
F (952) 828-3033

www.rosemount.com

