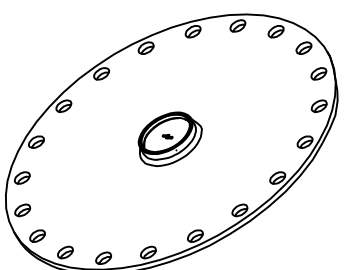
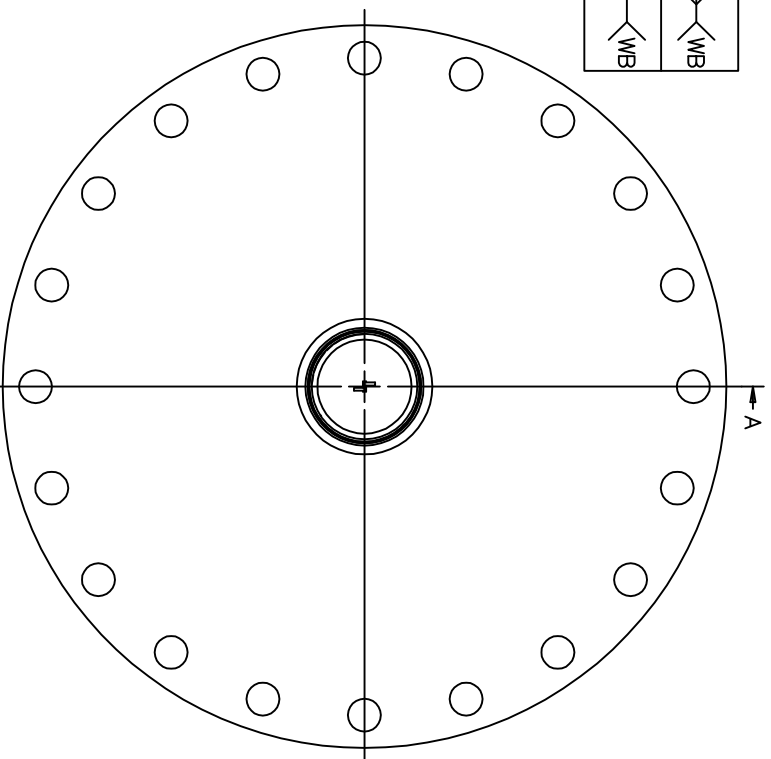
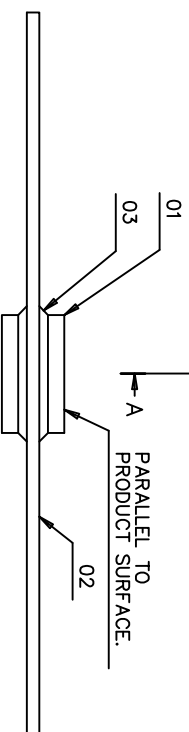


SEE NOTE 1

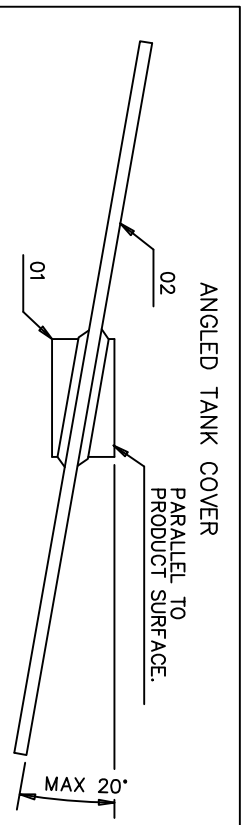
t = 5 TO 20	Ø d4	WB
t = 21 TO 38	Ø d6	WB



ISO-VIEW



- ③ WELD PROTECTION TO BE REMOVED AFTER WELD WORK.
- ② MARK GROOVE MUST BE DIRECTED OUT FROM THE TANK.
- ① REC. WELDING PIN 0K6770, 0K6771, 0K6775, AWS: A/SSA 5.4 E309L, AWS: A/SSA 5.4 E309MoL WELD DIMENSION IS ONLY RECOMMENDED. FOR PRESSURED APPLICATIONS SEE NATIONAL STANDARDS AND PRACTISE.



ANGLED TANK COVER

PARALLEL TO PRODUCT SURFACE.

03	WELD PIN	-	SEE NOTE 1.	CUSTOMER
02	TANK FLANGE/COVER	1		CUSTOMER
01	FLANGE BALL T38-W	1	AISI 316L	RTR
POS	ITEM DESCRIPTION	FILE	QTY	REMARK
ISSUED BY	WEEK	PRODUCT CODE	FILE	INSTALLATION DRAWING TITLE
GU-HF	0307	REX	ACAD	MECHANICAL INSTALLATION DWG
APPROVED BY	WEEK	ORIGINAL DWG NO.	SCALE	FLANGE BALL T38-W, WELDING
GST-TK	0307	9240003-944	-	
ROSEMOUNT®	1 ST ANGLE	DOC TYPE	DWG NO.	ISSUE
Tank Gauging	2	2	9240003-944	3
				1/1

Product Discontinued

THE COMPANY ASSUMES NO RESPONSIBILITY FOR THE ACCURACY OF THIS DOCUMENT. THE ROSEMOUNT NAME MUST NOT BE USED WITHOUT OUR AUTHORIZATION OR SUBJECT TO THE KNOWLEDGE OF A THIRD PARTY. COMMUNICATION WILL BE PROSECUTED. ROSEMOUNT TANK GAUGING AB, SWEDEN.