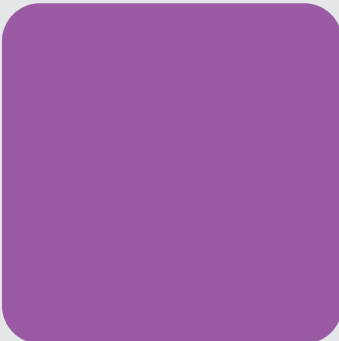
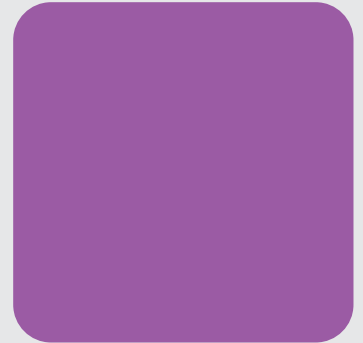
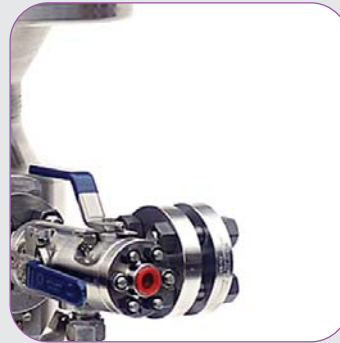


Roxar Wetgas meter

WGM

Data Sheet



When water is a concern

The Roxar state-of-the-art Wetgas meter measures real-time flow rates of water, gas and condensate, providing operators with vital information for optimized reservoir and process management.

The Roxar Wetgas meter is designed for installation in wells with GVF>95% vol. The design allows for very compact solutions, simplifying installation and integration in onshore and offshore topside facilities.

Unique Water Sensitivity

The Roxar Wetgas meter employs the same proven, unique and patented microwave technology as the Roxar Watercut meters. This technology allows for unmatched sensitivity to changing water and salinity levels.

Field Proven Technology

The Roxar Wetgas meter is based on proven technology and is used by operators all over the world. The Roxar Wetgas meter has been operational since 2003.

Specifications

General Specifications

Operating range:

- 95-100% GVF
- 0-100% WLR for GVF > 99%
- 0-50% WLR for GVF < 99%

Typical Velocity range:

- 5 to 40 m/s

Pipe dimensions:

- 2" - 12"

Design pressure:

- Up to 10,000 psi

Design temperature:

- Up to 150°C / 302°F

General Performance

Typical uncertainty:

- 90% confidence int.

Water fraction measurement:

Uncertainty:

- GVF > 99%: ±0.1 abs. vol.%
- GVF < 99%: ±0.2 abs. vol.% (WLR < 50%)

Sensitivity:

- < 0.005 abs. vol.%

Hydrocarbon mass flow:

Uncertainty:

- ±5% relative

Sensitivity:

- 0.5%

Interface Details - Mechanical

Sensor body material:

- Duplex (standard) or to customer specifications

Flange connection:

- ANSI or hub connections

Mass Flow Device:

- V-cone®

Length:

- < 1 meter

Weight:

- 2" - 8": 90 - 370kg

Installation:

- Vertical upward flow (recommended)

Interface Details - Electrical

Electrical housing material:

- Stainless steel / aluminium

Weather protection:

- IP66 / NEMA 7

Mounting:

- Field mounted, 2m from sensor

Temperature:

- Maximum ambient 60°C / 140°F

Weight:

- Approximately 75kg

Voltage supply:

- 100 - 240 VAC, 50 or 60 Hz or 20 - 28 VDC

Power consumption:

- Maximum 35W, nominal 25W

Hazardous area approval:

- Ⓜ II 2 (2)G EEx de[ia] IIB T5, Ta=42°C/60°C
Class I, Division 2 Groups C, D Temperature Code T5, [Exi]

Interface Details - Logic

User input:

- Hydrocarbon composition - up to 5 different sets of hydrocarbon compositions easily updated from the service console software

Serial port:

- RS485

Communication protocol:

- Modbus RTU

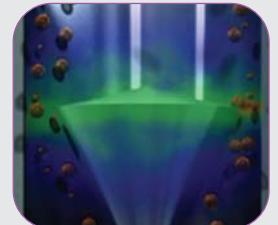
Output (examples):

- Water volume fraction, volume and mass flow rates of water, oil and gas, oil and gas at reference and actual conditions, differential pressure, temperature, pressure, alarm and warnings, GOR

Add-on Modules

- Formation Water Detection
- Gamma Densitometer
- Roxar Fieldmanager Software
- Roxar Fieldwatch - WGM Instrument Console Software
- Dual redundant dp-measurement

Roxar Wetgas meter



www.roxar.com

For further information
please contact your
regional office or
email: info@roxar.com
or visit www.roxar.com.

Head Office
CIS
Europe
North America
Middle East

Tel: +47 51 81 88 00
Tel: +7 495 504 3405
Tel: +47 51 81 88 00
Tel: +1 713 334 2222
Tel: +971 4 811 8100

Asia Pacific
Australia
Latin America
West Africa

Tel: +60 3 2177 4450
Tel: +61 8 9208 1680
Tel: +55 212 222 1941
Tel: +27 71 60 61 737

roxar
MAXIMUM RESERVOIR PERFORMANCE


EMERSON
Process Management