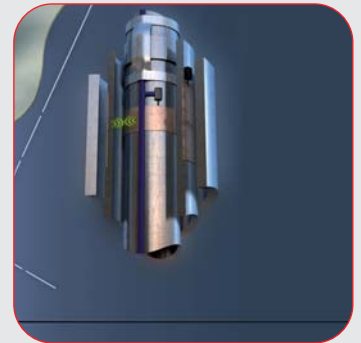
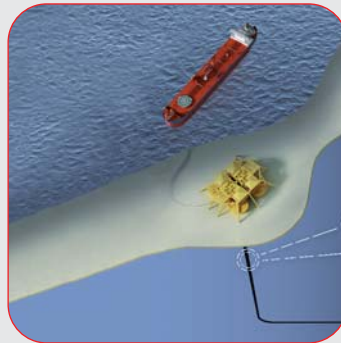
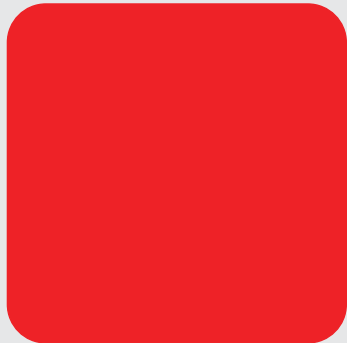


# Roxar downhole Wireless PT sensor system

Annulus B

Data Sheet



## Roxar downhole Wireless PT sensor system

The Roxar downhole Wireless PT sensor system allows the continuous monitoring of pressure and temperature in the B annulus of a subsea well. It provides positive verification of the casing pressure barrier integrity and early warning of abnormal conditions.

### Seamless integration, 20 year lifetime

Qualified for a 20 year life at 150°C (302°F) the system connects to the standard Roxar Integrated Downhole Network (IDN) cable and adds minimal rig time or risk to a regular well monitoring installation. It can be retrofitted to existing infrastructure and is compatible with most current control systems.

### Key Features

- Continuous monitoring with sampling rates up to every second
- IDN network powered, no batteries
- No casing penetrations, high integrity design
- Electronic wireless transmission of power and data
- Can be part of the well monitoring installation

## Specifications

### General Specifications

#### Casing side:

- Roxar downhole Transponder Carrier
- 10 3/4" 60.7# P110 VAM interface
- Full bore, no penetrations

#### Tubing side:

- Roxar downhole Reader Carrier
- 7" 32# VAM
- Full bore, no penetrations

### Operating Range (casing side)

- Temperature 0°C to 150°C / 32°F to 302°F
- Pressure 690 bar / 10 000 psi

### External Interfaces

#### Downhole Cable Options:

- Shielded Single Core
- Shielded Dual Core (twisted pair)

#### Communication:

- RS422
- 10 Mbit Ethernet
- RS485 (optional)

Most current subsea control systems are supported

#### Power supply:

- 24 VDC

### Communication Protocols

- Modbus TCP
- Modbus RTU
- FTP
- PPP

### Integrated Downhole Network (IDN)

- Supports up to 32 Roxar downhole HS sensors

Any combination of the following Roxar sensors may be deployed in any order:

- Annulus A - Pressure and Temperature
- Annulus B - Pressure and Temperature
- Tubing - Pressure and Temperature
- Tubing Density (includes pipe orientation)
- Tubing Permittivity (includes flow velocity)
- Choke Position Sensor

A single instrument cable may be used for all downhole monitoring in the well.

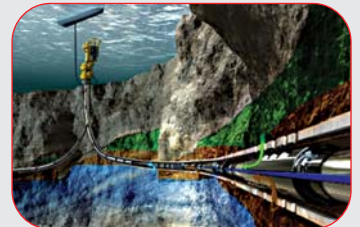
### Standards

- DHNC card fully IWIS compatible
- All downhole equipment is NACE MR0175

### Optional Features

- Integrated Annulus A sensor
- Other sizes available on request

## Roxar downhole Wireless PT sensor system



[www.roxar.com](http://www.roxar.com)

For further information  
please contact your  
regional office or  
email: [info@roxar.com](mailto:info@roxar.com)  
or visit [www.roxar.com](http://www.roxar.com).

Head Office  
CIS  
Europe  
North America  
Middle East

Tel: +47 51 81 88 00  
Tel: +7 495 504 3405  
Tel: +47 51 81 88 00  
Tel: +1 713 334 2222  
Tel: +971 4 811 8100

Asia Pacific  
Australia  
Latin America  
West Africa

Tel: +60 3 2177 4450  
Tel: +61 8 9208 1680  
Tel: +55 212 222 1941  
Tel: +27 71 60 61 737

**roxar**  
MAXIMUM RESERVOIR PERFORMANCE

  
**EMERSON**  
Process Management