

Subject to change without notice

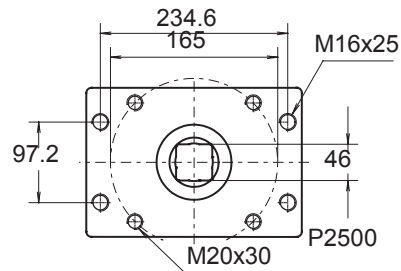
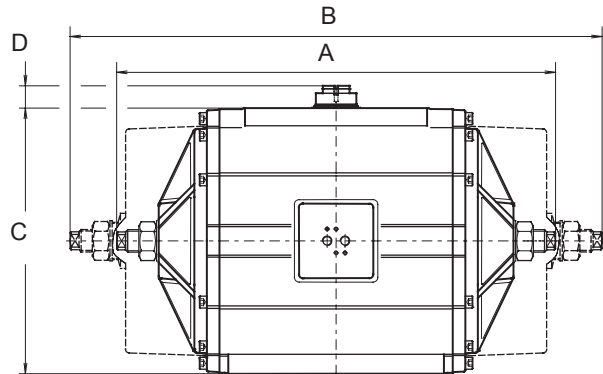
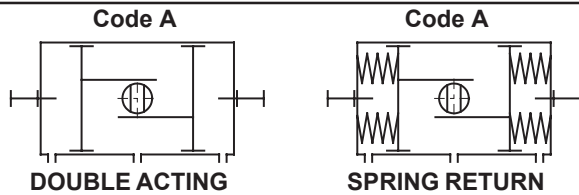
VALVE AUTOMATION SYSTEMS

EL-O-MATIC<sup>®</sup>  
w w w . e l - o - m a t i c . c o m

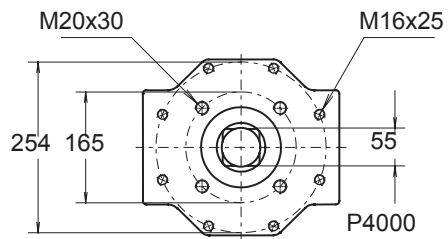
All rights reserved

Nr.: 1.501.01

Date: May '04



Note: Do not adjust under pressure.



Dim. in mm.	ACTUATOR TYPE	
	P2500	P4000
A	580	708
B	795	1152
C	356	380
D	30	30

**Description:**

Actuators with one way adjustable limit stops are used where the maximum opening (or closing) position of the valve needs to be reduced. For instance to adjust the maximum capacity of a remote operated valve. Also actuators with 180° rotation are available with these stops.

**Operation:**

Stop screws are fitted to both endcaps and the screw length is such that adjustment is possible through the specified rotation of the actuator. The modified endcap is machined for -0.5° to +93° rotation for all P-series models.

**Identification:**

"L1" is added to the basic part number i.e. PD2500-L1

**Specification:**

Pressure : Up to 8 bar  
 Operating media : Air, dry or lubricated or non-corrosive gas  
 Torque (90°) : Data sheet 1.104.01 - 1.104.04  
 (180°) : Data sheet P-series 1.204.01 and 1.204.02  
 Other dimensions : Data sheet 1.103.XXX (90°)  
 : Data sheet 1.203.011 (180°)  
 Temperature : -20° to +80°C  
 Adjustable range : 80°-93°(90°) or 160°-186° (180°)

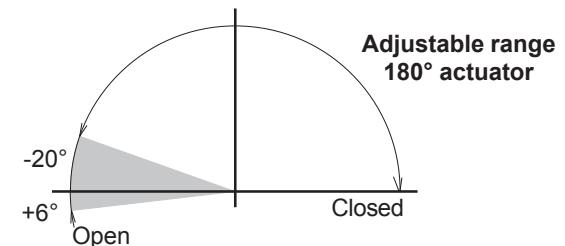
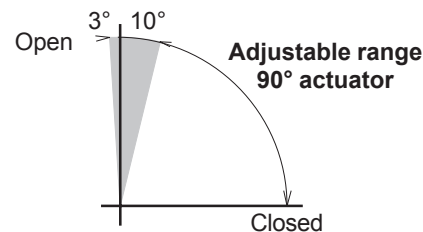
**Adjustable position** (see data sheet 1.503 or 1.504):

**Code Position Spring to:**

A Valve open close  
 B Valve open close  
 C Valve closed open  
 D Valve closed open

**Note:**

- 1) Can be provided with extra long screws for full range adjustment (identification: PD2500-LF)
- 2) This option in combination of a manual override gearbox is redundant



EL-O-MATIC ACTUATOR WITH ONE WAY LIMIT STOPS

L1/LF