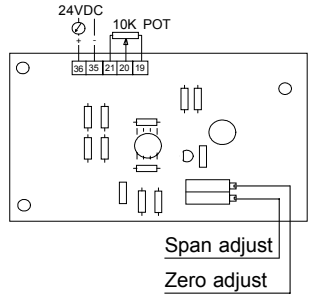
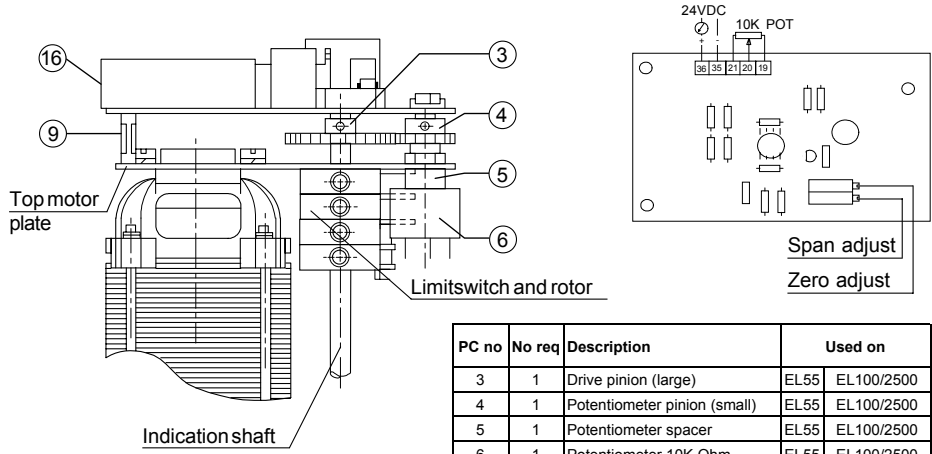


Data sheet

Sheet No.: 5.205.01 Rev. A
Date: November 2009

EL ACTUATOR WITH mA POSITION TRANSMITTER, 2-WIRE (Kit option)

PT2



| PC no | No req | Description | Used on |
|-------|--------|------------------------------|-----------------|
| 3 | 1 | Drive pinion (large) | EL55 EL100/2500 |
| 4 | 1 | Potentiometer pinion (small) | EL55 EL100/2500 |
| 5 | 1 | Potentiometer spacer | EL55 EL100/2500 |
| 6 | 1 | Potentiometer 10K Ohm | EL55 EL100/2500 |
| 9 | 3 | Printspacer | EL55 |
| 9 | 3 | Spacer/screw | EL100/2500 |
| 16 | 1 | Position transmitter board | EL55 EL100/2500 |

Description

This electric actuator variation provides a continuous position indication by transmitting a 4 to 20 milli-Amp signal, this is proportional to the output shaft position.

This 2 wire version consists of a potentiometer and an electronic card fed from an external (24VDC.) power supply.

The card is equipped with trimmers for zero and span adjustment and terminals for the internal and external connections.

Construction

The potentiometer and circuit board located on the top motor plate are wired as shown, using the board's own terminal strip.

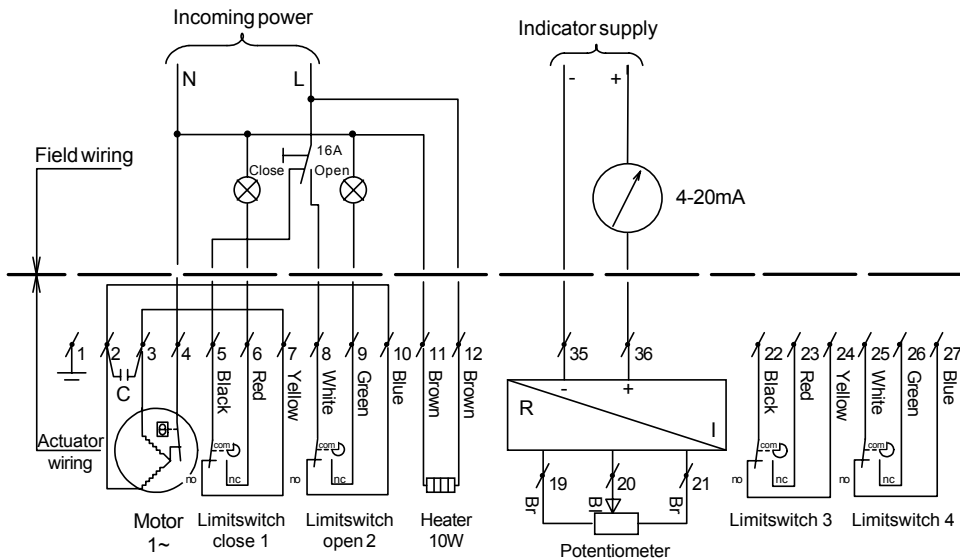
Specification

Input : 24VDC.
Output : 4 to 20 mA, with adjustable zero and span
Temperature : -20°C to +70°C
Potentiometer : 10KΩ (see sheet 5.202)

Identification

Factory Option : Add "+ PT2" to the basic actuator size
: eg. EL100 220/50 + PT2
Kit Option : Actuator size is added to: "Kit, PT2"
: eg. Kit, PT2/EL 55 220/50

- Note**
- 1) When supplied as a kit option, all the components as shown are included, together with an instruction sheet
 - 2) Wiring diagram is shown with actuator in mid position
 - 3) Wiring diagram for EL55 220V/50Hz + PT2



www.El-O-matic.com

Copyright © Emerson Process Management. The information in this document is subject to change without notice.

Updated data sheets can be obtained from our website www.El-O-matic.com or from your nearest Valve Automation Center **USA**: +1 813 319 0266 **Europe**: +31 74 256 10 10 **Asia-Pacific**: +65 6501 4600



EMERSON
Process Management