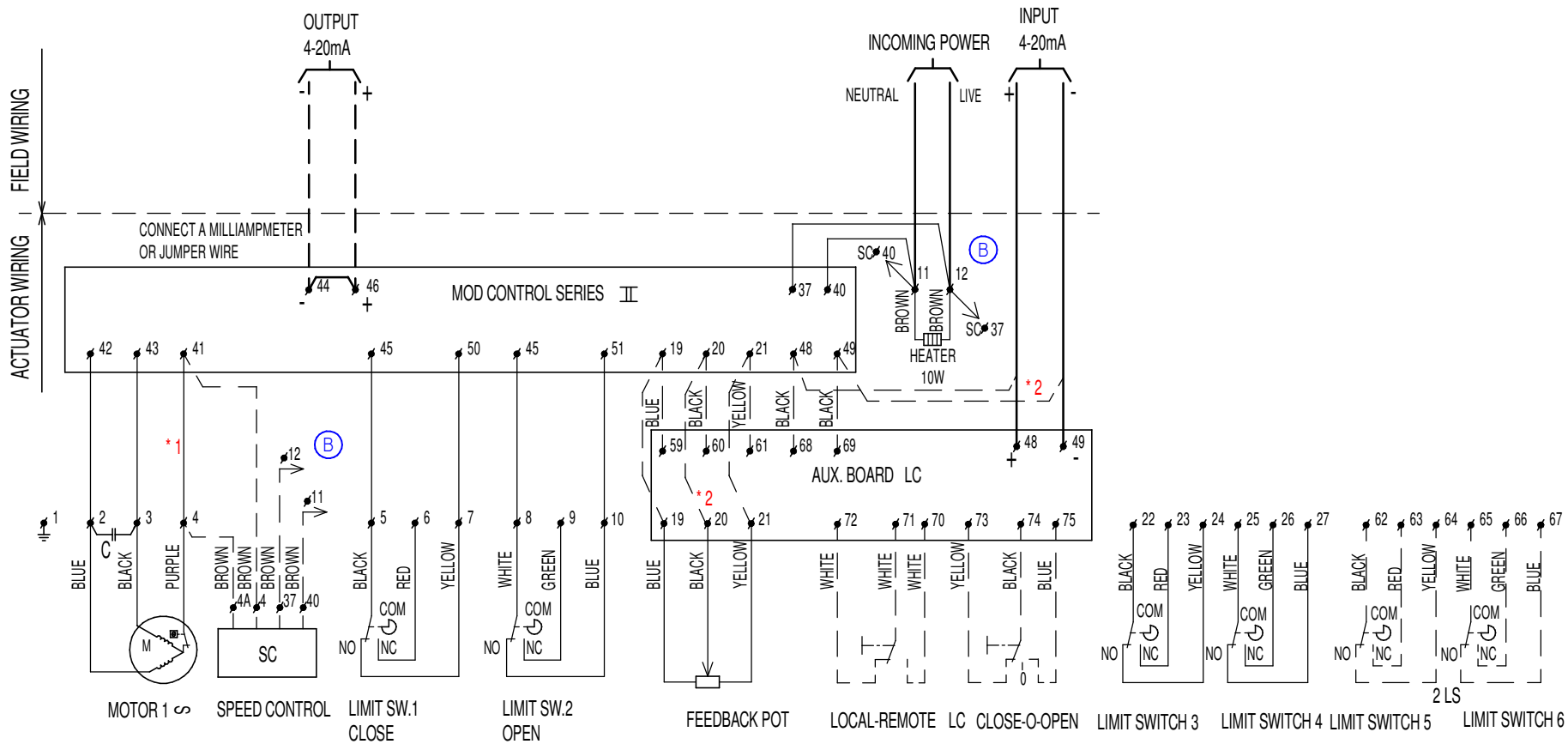


REVISIONS		
BY	ECN	DATE
VM	HE002323	06/10/2011



LIMIT SWITCHES SHOWN IN MID STROKE
 KIT OPTIONS, LC_2LS_SC, ONLY ON ORDER
 KIT OPTIONS SHOWN IN DOTTED LINES

IMPORTANT
 Each actuator must be powered through its own individual switch or relay contacts to avoid cross feed between two or more actuators.

- * 1 NO WIRE BY SPEEDCONTROL SC
- * 2 WITHOUT LOCAL CONTROL, LCPOTMETER TO TERMINAL 19, 20, 21 MOD INPUT 4-20 mA TO TERMINAL 48, 49, MOD

UNLESS OTHERWISE SPECIFIED		EMERSON Process Management	
TOLERANCES TOL: ± <± *	GENERAL NOTES 1. DIMENSIONS ARE IN MM 2. REMOVE BURRS AND BREAK SHARP EDGES 3. CHAMFER FIRST THREAD 4. FILLETS R 5. SURFACE FINISH ✓ 6. DO NOT SCALE DRAWING 7. ISO / ASME Y14.5	Wiring diagram options Ⓢ motor 1PH+4-20mA MOD, EL35&55 WP/XP	
MATERIAL -	TREATMENT -		
<small>THIS DOCUMENT AND THE DATA DISCLOSED HEREIN OR HEREWITH IS NOT TO BE REPRODUCED, USED OR DISCLOSED IN WHOLE OR IN PART TO ANYONE WITHOUT THE PERMISSION OF EMERSON.</small>	APPROX. WEIGHT KGS -	THIRD ANGLE PROJECTION 	DRN AB CHK APR Released DATE 05/10/2000 SCALE - DWG. NO. 990.40.025 REV C SHEET 1 of 1