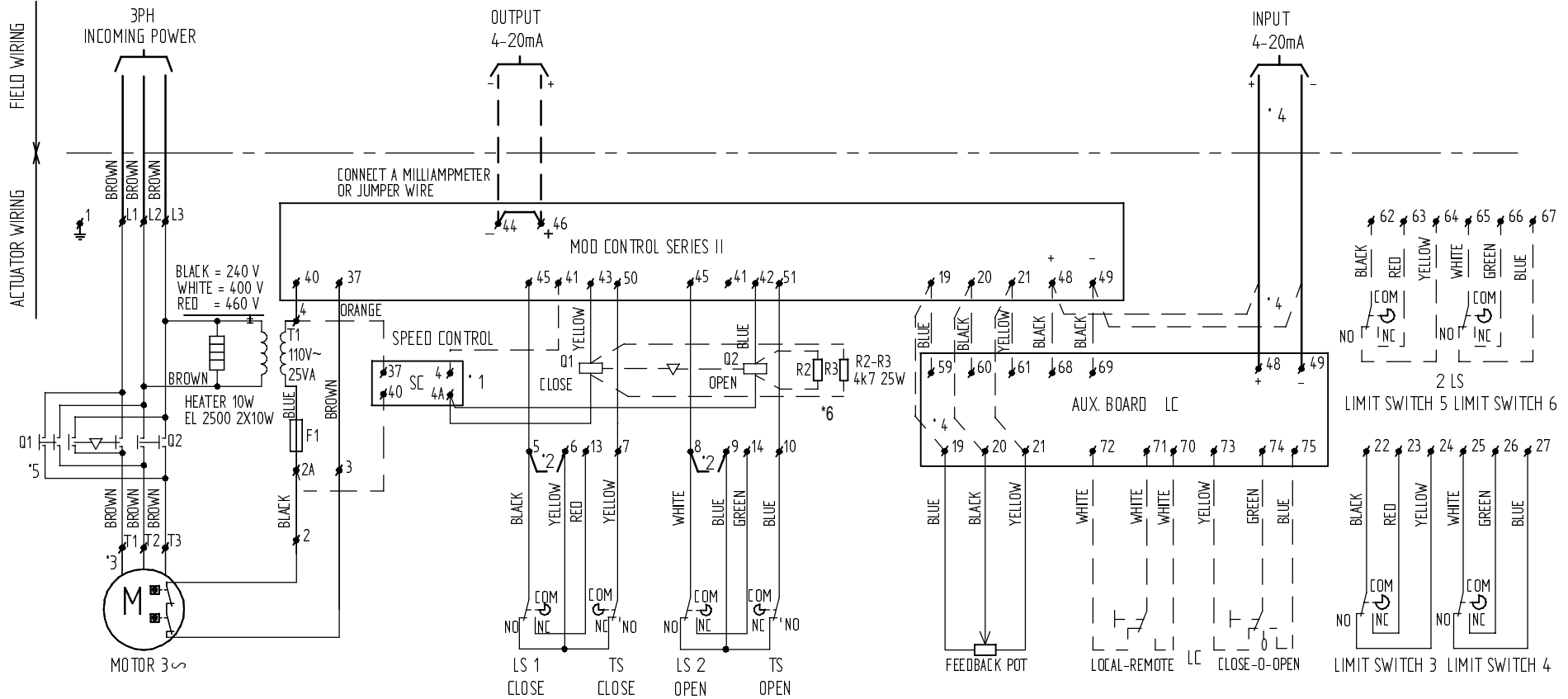


TOLERANCE LIMITS X = ± 0.5  
 XX = ± 0.25  
 XXX = ± 0.1  
 UNLESS OTHERWISE SPECIFIED  
 DIMENSIONS ARE IN MILLIMETERS  
 - REPEATED DIMENSIONS AND  
 SPACED CONTACTS  
 ANGULAR = ± 1/2



- \* 1 WITHOUT SPEEDCONTROL SC  
WIRES Q1 AND Q2 TO TERMINAL 41 MOD
- \* 2 LINK FOR TORQUE SEATED VALVE
- \* 3 MOTOR WIRING  
EL 100/150 EL 200/250  
T1 = BLUE T1 = BROWN  
T2 = BLACK T2 = BLACK  
T3 = BROWN T3 = BLUE
- \* 4 WITHOUT LOCAL CONTROL LC  
POTMETER TO TERMINAL 19, 20, 21 MOD  
INPUT 4-20 mA TO TERMINAL 48, 49, MOD
- \* 5 EL1200 - EL 2500  
Q1/Q2: USE 16A RELAY CONTACTS
- \* 6 RESISTORS ONLY IN COMBINATION WITH SPEEDCONTROL

**LOCAL CONTROL EX**  
 IN EXPLOSION PROOF EXECUTION  
 BOTH LOCAL/REMOTE AND  
 CLOSE/STOP/OPEN SWITCHES ARE  
 COMBINED INTO ONE SWITCH

**LIMIT SWITCHES SHOWN IN MID STROKE**

KIT OPTIONS, LC - 2LS - SC, FROM EL200 ONLY ON ORDER  
 KIT OPTIONS SHOWN IN DOTTED LINES

**IMPORTANT**

Each actuator must be powered through  
 its own individual switch or relay  
 contacts to avoid cross feed between  
 two or more actuators

<b>ELO-MATIC</b> INTERNATIONAL LOCATION: HENGELD 101, THE NETHERLANDS		Format : A3	Dir. : AB	Scale : -	Date : 05/10/2000
Material : -		Title : <b>Wiring diagram options</b>			ENC nr. : H-0786 / 03/07/2001
Treatment : -		motor 3PH+4-20mA MOD+int, EL100-EL2500 WP/XP			Par. : RS
		Dr. / writ. : 990.40.031			State : Released
					Rev. : B