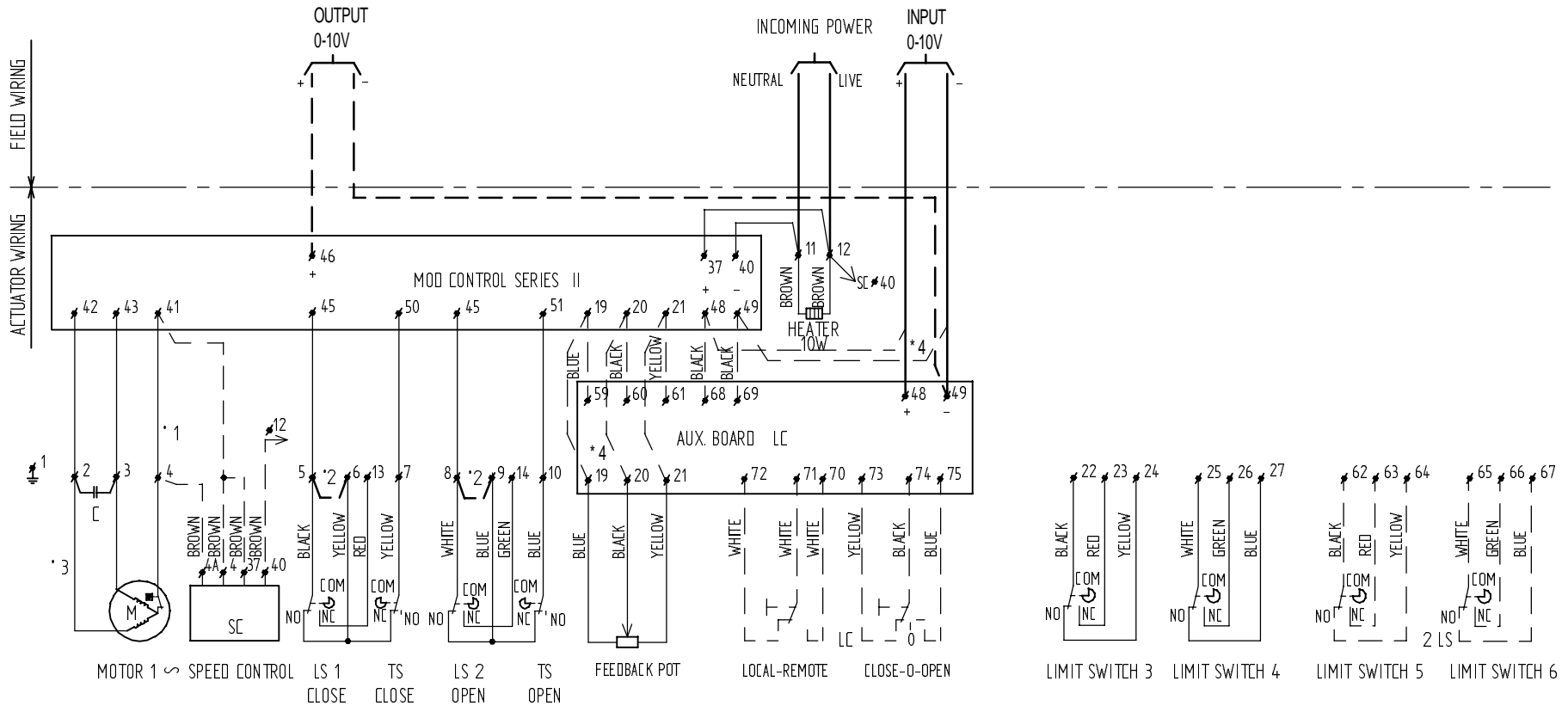


TOLERANCE LIMITS X = ± 0.5  
 XX = ± 0.25  
 XXX = ± 0.1  
 UNLESS OTHERWISE SPECIFIED  
 DIMENSIONS ARE IN MILLIMETERS  
 REPEATED DIMENSIONS AND  
 SPACED CONNECTS



- \* 1 NO WIRE BY SPEEDCONTROL SC
- \* 2 LINK FOR TORQUE SEATED VALVE
- \* 3 MOTOR WIRING  
 EL 100/150 EL 200/160  
 2 = BLUE 2 = BLACK  
 3 = BLACK 3 = BLUE  
 4 = BROWN 4 = BROWN
- \* 4 WITHOUT LOCAL CONTROL LC  
 POTMETER TO TERMINAL 19, 20, 21 MOD  
 INPUT 0-10 V TO TERMINAL 48, 49, MOD

**LIMIT SWITCHES SHOWN IN MID STROKE**

KIT OPTIONS, LC - 2LS - SC, ONLY ON ORDER  
 KIT OPTIONS SHOWN IN DOTTED LINES

**IMPORTANT**

Each actuator must be powered through its own individual switch or relay contacts to avoid cross feed between two or more actuators

IEL1200-1600=220V

<b>ELO-MATIC</b> INTERNATIONAL LOCATION: HENGELD 101, THE NETHERLANDS		Format: A3	Drw: RS	Scale: -	Date: 03/11/2000
Material: -		Title: Wiring diagram options			ENC nr.: H-0786 / 03/07/2001
Treatment: -		motor 1PH + 0-10V MOD, EL100-EL1600 WP/XP			Date: Released
Drw/nr.: 990.40.038				Rev.: B	