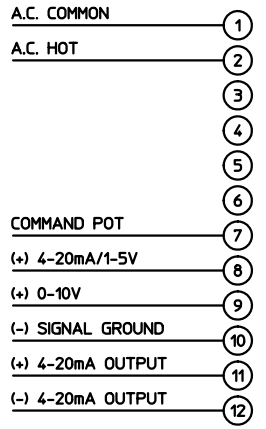
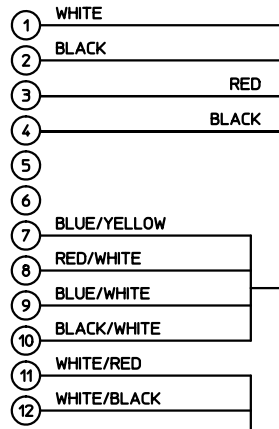


FIELD WIRING
(REFERENCE ONLY - NOT SUPPLIED)

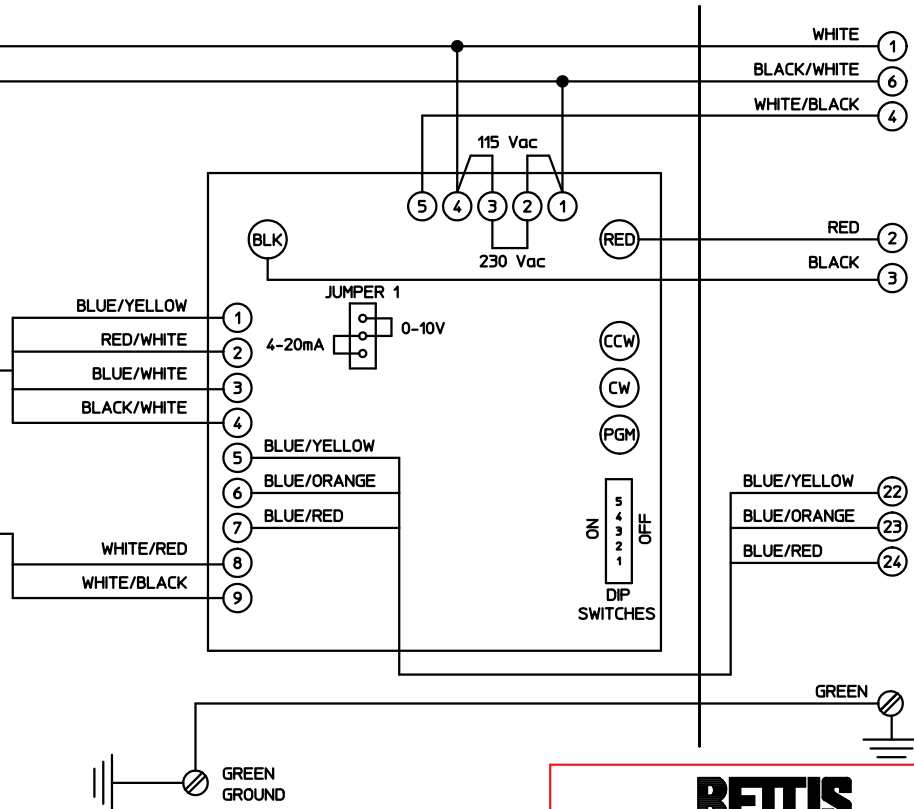


PANEL WIRING



NOTE 6

TO ACTUATOR WIRING
SEE BETTIS WD-0025



- NOTES:**
1. FIELD WIRING IS SHOWN FOR REFERENCE ONLY AND IS NOT SUPPLIED WITH THE ACTUATOR.
 2. ALWAYS VERIFY SPECIFIC ACTUATOR WIRING TO SPECIFICATION BEFORE INSTALLING.
 3. CONTROL VOLTAGE OF 4-20 mA OR 0-10V, NO BOTH.
 4. FOR 115 Vac SIGNALS, TERMINAL BLOCK TBI MUST HAVE TWO JUMPERS BETWEEN 1 AND 2 AND BETWEEN 3 AND 4. FOR 230 Vac SIGNALS, TBI MUST HAVE ONE JUMPER BETWEEN 2 AND 3.
 5. REFERENCE BETTIS BULLITEN 01597 FOR PROGRAMMING DIRECTIONS.
 6. FOR REMOTE MOUNTED UNITS, TERMINATE RED AND BLACK SERVO WIRES HERE.



Electric Division, Mansfield, Ohio

**SPRING RETURN MODULATING PANEL,
ACv/1Ph WITH C1397 ELECTRONIC
PROPORTIONAL POSITIONER, SR5 ACTUATOR**

REVISIONS
REV. A1
ECN 99064
09/17/99 DBK
REV. 1
ADDED NOTE 6
SHOW ACTUA-
TOR TERMS
7/31/02 J.F.

THIS DOCUMENT IS THE PROPERTY OF BETTIS AND MAY NOT BE USED, REPRODUCED, PUBLISHED, OR DISCLOSED TO OTHERS WITHOUT EXPRESS AUTHORIZATION OF BETTIS

SCALE NONE	JOB NO	FILE	DRAWING NO.
DATE 08/26/99			2 WD-0026
DR. BY TG			
APPD BY TS	ASSY	REV. 1	2 3 4 5 6
APPD BY			NO. 7 8 9 10