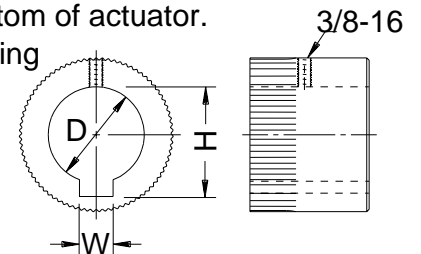


- 1 1 1/2 NPT is preferred wire entry top or bottom.
- 2 Lubrication 1/2 -14 NPT plug.
- 3 Maximum valve stem length into actuator.
- 4 Spline Bush: Removable from the bottom of actuator. Refer to EIM Job Spec Sheet for Bushing furnished for specific application.



INCHES .XXX ± .005"
 (MILLIMETERS) .XX ± .020"
 .X APPROX.

EIM EIM COMPANY, INC.
 13840 PIKE ROAD
 CONTROLS MISSOURI CITY, TX 77489
 TITLE **M / MG02 1/4 T 6.50"**
 OUTLINE NO. **M-2001/16G** A

A	6/15/95	9587	/CML
REV	DATE	ERO	BY