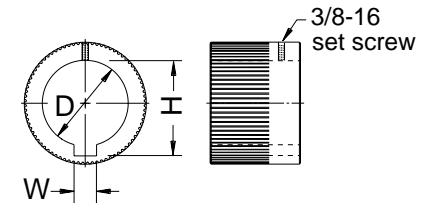


- 1 1.50-11.5 NPT (2 plcs) is preferred wire entry. **Caution** Conduit must enter at lowest point to prevent water from entering electrical enclosure due to condensation. If hazardous (classified) or Nema 6 location, conduit seals are required at electrical enclosure entrances.
- 2 Lubrication 0.50 -14 NPT Plugs
- 3 For electrical control pilot device elements mounted on actuator control cover, see EIM job spec sheet & wiring diagram furnished for each specific EIM job number.
- 4 Maximum valve stem length into actuator.
- 5 Spline Bush: Removable from the bottom of actuator. Refer to EIM Job Spec Sheet for Bushing furnished for specific application.



INCHES .XXX ± .005"
 (MILLIMETERS) .XX ± .020"
 .X APPROX.

EIM COMPANY, INC.
 13840 PIKE ROAD
 CONTROLS MISSOURI CITY, TX 77489

TITLE **M / GB3/ MG05 1/4 T**
 OUTLINE NO. **M-5A01/40G** A

A	7/17/98		LHE/d
REV	DATE	ERO	BY