

# TEC2000 Quick-Start Guide



# Welcome to TEC2000<sup>®</sup>

The TEC2000 actuator's Local Display Module (LDM) and Remote Display Module (RDM) provide easy-to-read actuator information.

The screen graphics will display the mode of operation, valve status, position, torque, and alarm symbols. The message center will display actuator setup options, data entry feedback, and alarm messages.

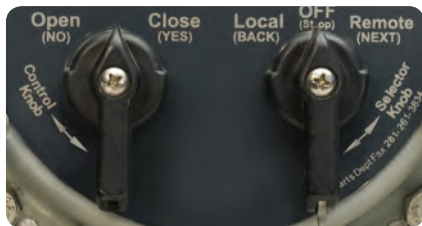


Once you follow the simple steps outlined in this guide, the actuator will be ready for normal operation. The bar graphs, position digits, icons, and LEDs will indicate the valve status.

Fully **OPEN** position:



Fully **CLOSED** position:



Control Knob

Selector Knob

## Factory Settings

The actuator has been configured as specified in the order. No further changes should be necessary other than setting the position limits, and, if network controlled, setting a unique network address. If full data was not provided when ordering or if changes are needed, see the *TEC2000 Installation & Operation Manual (E2K-405)*, which can be found at [www.eim-co.com](http://www.eim-co.com).

## Power the Actuator

Verify the voltage rating on the unit nameplate. Connect power to the unit.

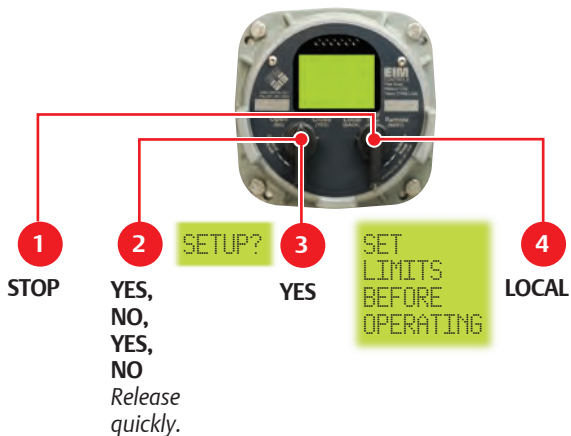
## Are Position Limits Set?

Does **“SET LIMITS BEFORE OPERATING,”** **“EE%,”** and the **alarm icon appear**, and is the **yellow LED** blinking? If so, then position limits **have not** been set.

*Position limits  
have not been set...*



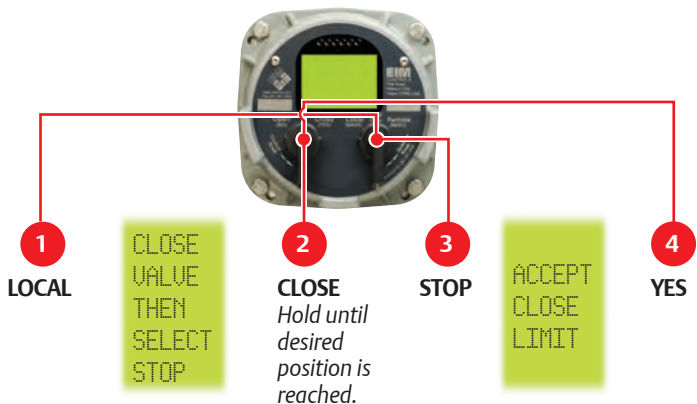
## Setting **Valve Position Limits** Initially



Place the selector knob in the **STOP** position. Then toggle the control knob in rapid succession to **YES**, then **NO**, then **YES**, then **NO** and release. The Setup icon will be displayed on the display module and **“SETUP?”** will be displayed on the message center. Rotate the control knob to **“YES.”** The message center will display **“SET LIMITS BEFORE OPERATING.”** Set position limits as described on the next pages.

# Setting Position Limits for **Electrical** Operation

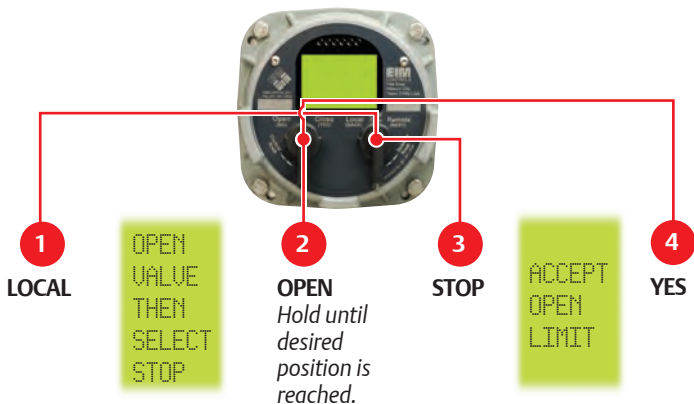
## **STEP 1: CLOSED Valve Position**



Turn the selector knob to the **LOCAL** position. At the “**CLOSE VALVE THEN SELECT STOP**” prompt, hold the control knob in the **CLOSE** position until the desired position is reached. Return the selector knob to the **STOP** position. At the “**ACCEPT CLOSE LIMIT**” prompt, select “**YES.**”

## Setting Position Limits for **Electrical** Operation

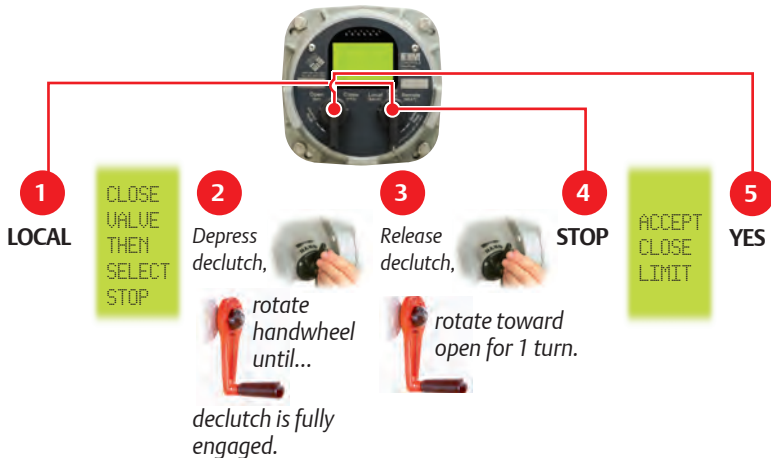
### STEP 2: OPEN Valve Position



Turn the selector knob to the **LOCAL** position. At the “**OPEN VALVE THEN SELECT STOP**” prompt, hold the control knob in the **OPEN** position until the desired position is reached. Return the selector knob to the **STOP** position. At the “**SAVE LIMITS**” prompt, select “**YES.**” Rotate selector knob to either next or back until “**EXIT**” is displayed, then select “**YES.**”

# Setting Position Limits for **Manual** Operation

## STEP 1: CLOSED Valve Position

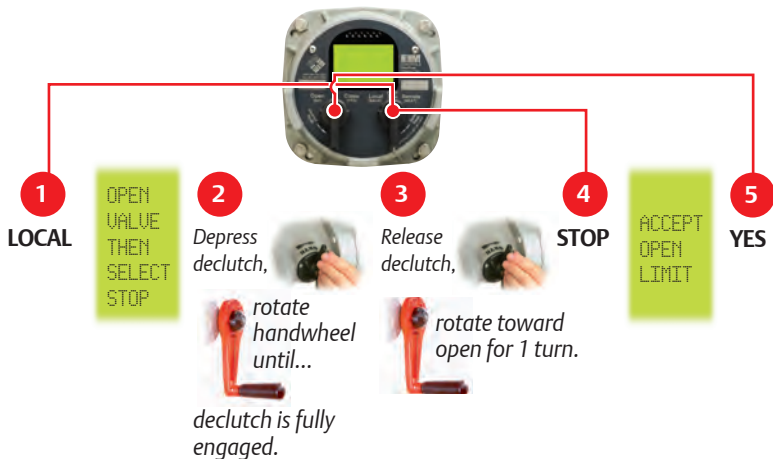


Turn the selector knob to the **LOCAL** position. At the “**CLOSE VALVE THEN SELECT STOP**” prompt, depress the **declutch lever** while rotating the **handwheel** until the clutch is fully engaged. Release the lever. When the valve is fully closed, move the valve in the open direction for one handwheel turn to allow for coasting of the motor. Return the selector knob to the **STOP** position. At the “**ACCEPT CLOSE LIMIT**” prompt, select “**YES.**”



# Setting Position Limits for **Manual** Operation

## STEP 2: OPEN Valve Position



Turn the selector knob to the **LOCAL** position. At the “**OPEN VALVE THEN SELECT STOP**” prompt, depress the **declutch lever** while rotating the **handwheel** until the clutch is fully engaged. Release the lever. When the valve is fully opened, move the valve in the close direction for one handwheel turn to allow for coasting of the motor. Return the selector knob to the **STOP** position. At the “**SAVE LIMITS**” prompt, select “**YES.**”

# Check the **Open/Closed Settings**

## Valve Closed

As you operate the valve in the close direction, verify that the **green LED** is blinking. When fully closed is reached, verify that the **green LED** stays **ON** and **0%** is displayed.



- 1 When turning to close, green LED blinks.
- 2 When fully closed, green LED remains lit.

0%

## Valve Open

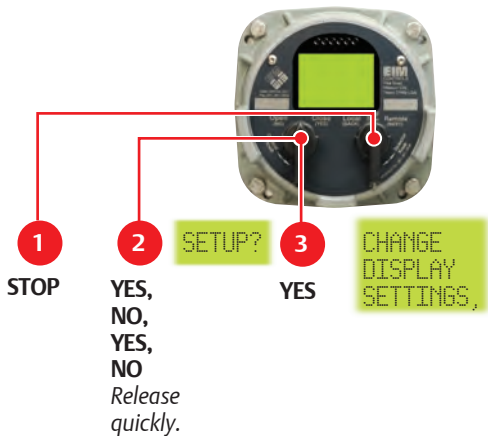
As you operate the valve in the open direction, verify that the **red LED** is blinking. When fully open is reached, verify that the **red LED** stays **ON** and **100%** is displayed.



- 1 When turning to open, red LED blinks.
- 2 When fully open, red LED remains lit.

100%

# Changing the Valve Settings



Continued on next page ►

Turn the selector knob to the **STOP** position then toggle the control knob in rapid succession to **YES**, then **NO**, then **YES**, then **NO** and release. The setup icon will be displayed on the display module and “**SETUP?**” will be displayed on the message center. Rotate the control knob to **YES**. The message center will display “**CHANGE DISPLAY SETTINGS**”.

# Changing the **Valve Settings**



Continued  
from previous  
page

4

**NO**  
Until

CHANGE  
SETTINGS?

appears.

5

**YES**

ACCEPT  
PASSCODE  
CHARACTER 1? X

Continued  
on next page

Answer **NO** to the Setup prompts until “**CHANGE SETTINGS?**” appears. Answer **YES**. “**ACCEPT PASSCODE CHARACTER 1?X**” appears. The factory default passcode is **000**. Do not change the password without recording the new password.

## Changing the Valve Settings

# Enter Passcode



▶ Continued from  
previous page

**6**

OR

**7**

Continued on next page ▶

**YES**

*If passcode  
character is  
correct...*

**NO**

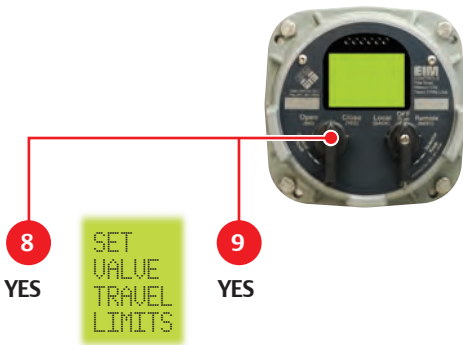
*...to advance  
to correct  
character.*

Use the control knob and answer **YES** if the passcode character is correct. If not, use **NO** to advance incrementally to the correct character. Repeat this process until three passcode characters are entered.

## Changing the Valve Settings

# Setting Limits

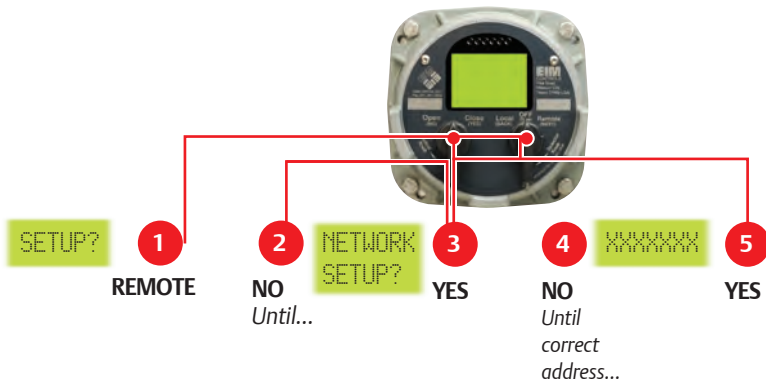
▶ *Continued  
from previous  
page*



Advance to the **“SET VALVE TRAVEL LIMITS”** prompt and answer **YES**. Proceed to set limits.

# Network Controlled

(CAM and Controlinc® option required)



In the **“SETUP”** mode advance to **“NETWORK SETUP?”** using the selector knob in the **REMOTE** position. Answer **YES**. Hold the control knob in the **NO** position until the correct address appears. Answer **YES**. Unit is now network controlled. If other configuration changes are needed, please see the *TEC2000 Installation & Operation Manual (E2K-405)*, which can be found at [www.eim-co.com](http://www.eim-co.com).

**Emerson Process Management  
Valve Automation**

13840 Pike Rd.

Missouri City, Texas 77489 USA

T +1 800 679 1561 - toll-free USA

T +1 281 499 1561

F +1 281 499 8445

info.MissouriCity@Emerson.com

**Emerson Process Management  
Valve Automation**

6-7 Galaxy House

New Greenham Park

Newbury, Berkshire

RG19 6HW England

T +44 0 1635 817 315

F +44 0 1635 817 460

info.England@Emerson.com

© 2010 Emerson Process Management. All rights reserved.

The Emerson logo is a trademark and service mark of Emerson Electric Co. "Brand mark listing" are marks of one of the Emerson Process Management family of companies. All other marks are property of their respective owners.

The contents of this publication are presented for information purposes only, and while every effort has been made to ensure their accuracy, they are not to be construed as warranties or guarantees, express or implied, regarding the products or services described herein or their use or applicability. All sales are governed by our terms and conditions, which are available on request. We reserve the right to modify or improve the designs or specifications of our products at any time without notice.



E2K-410-0610

[www.eim-co.com](http://www.eim-co.com)



**EMERSON**  
Process Management