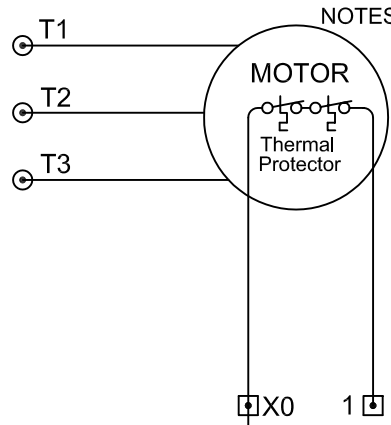
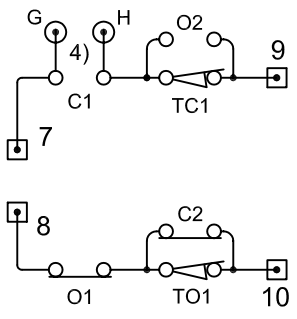
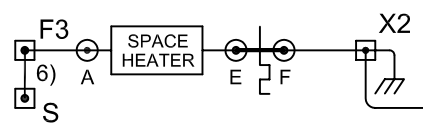


L1
L2
L3



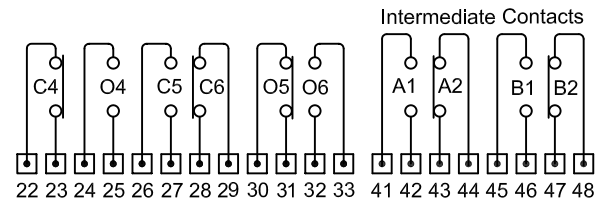
- NOTES: 1) Contacts shown: Valve Closed, Voltage: Off, S/S :Hand
 2) Customer wires to terminals on PWR and TBM modules.
 3) Torque switch TC1 & TO1 NC contacts open, and TC2 & TO2 contacts make on field adjustable mechanical overload in (C) Close, or (O) in Open direction.
 4) For Torque seated valve: Install G to H strap on LSM.
 8) Motor thermal contacts open with excessive temperature.



14) Use 90°C minimum rated conductors for customer field wiring to valve actuator.

S F3 1 X0 X2

7 8 9 10



		Valve Position			Contact Function
		Close	MID	Open	
CLOSE rotor	C1	O	X	X	Close coil
	C2	X	O	O	Bypass TO1
	C3	O	X	X	Open lamp
	C4	X	O	O	
	C5	O	X	X	
	C6	X	O	O	
OPEN rotor	O1	X	X	O	Open coil
	O2	O	O	X	Bypass TC1
	O3	X	X	O	Close lamp
	O4	O	O	X	
	O5	X	X	O	
	O6	O	O	X	
A	A1	X	O		Spare
	A2	O	X		Spare
B	B1	O	X		Spare
	B2	X	O		Spare

LSM	TBM	RCT	MTR	ISM			
03	03	00	00	01			



DWN BY PB ORIGINAL DATE 10-04-2010

WIRING DIAGRAM

M2CP-101